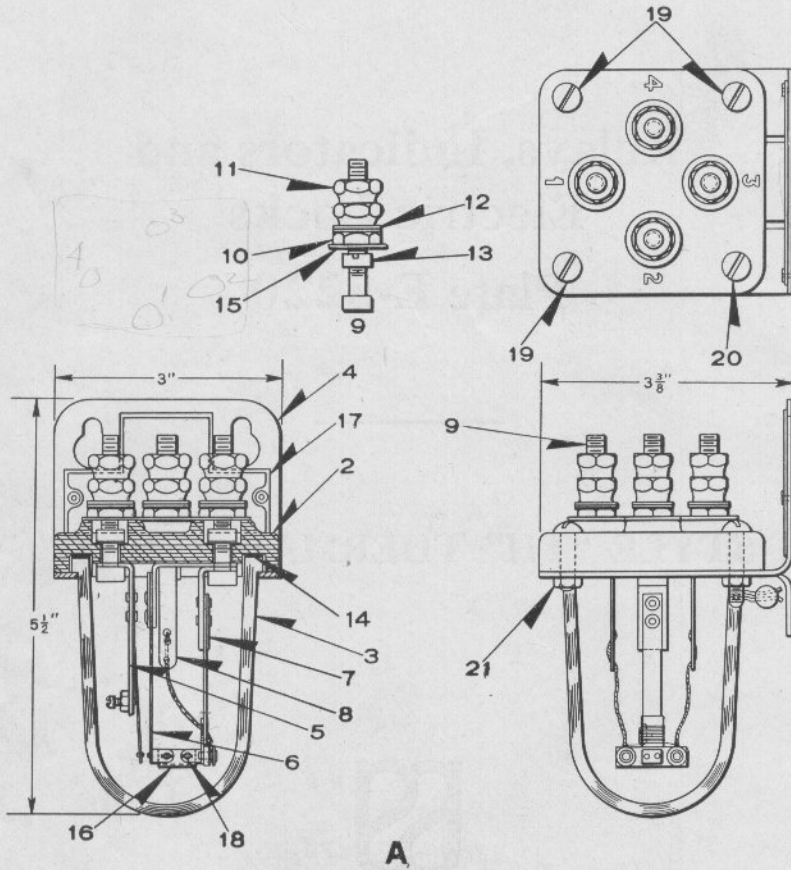


Zachary C. Gillihan 2008



STYLE "TH" THERMAL RELAY

The Style "TH" thermal relay is small, compact and enclosed. It can be used for wall or shelf mounting, the same bracket being used for either. The top plate is of moulded bakelite, and has mounted on it four A. R. A. terminals. The standard relay is furnished for 10 volt (a-c. or d-c.) 10 second operation, but other operating voltages and time intervals can be furnished when desired. The contact will carry one ampere. Further information may be found in bulletin 137.

UNION SWITCH & SIGNAL CO.

STYLE "TH" THERMAL RELAY

Order by Plate, Piece, Reference and Abbreviated Description Given in Heavy Face Type Only

Style "TH" Thermal Relay Complete							
Piece	Ref.	Volts	Retard. Sec.	Ohms Res.	Heater Element Ref.	Remarks	Drawing Reference
160397	A	10	10	10	7		B-12662-2
160529	Aa	14	10	20	7a		B-12662-2
160530	Ab	4.5	13	2.5	7b		B-12662-2
162573	Ac	14	15	20	7c		B-12662-2
163114	Ad	14	5	20	7a		B-12662-2
163115	Ae	24	15	60	7d		B-12662-2
163665	Af	12	5	15	7e		B-12662-2
164016	Ag	8	5	6.5	7f		B-12662-2
164351	Ah	10	5	10	7		B-12662-2
164503	Aj	12	10	15	7e		B-12662-2

Zachary C. Gillihan 2008

PLATE E-5220

UNION SWITCH & SIGNAL CO.

STYLE "TH" THERMAL RELAY

Order by Plate, Piece, Reference and Abbreviated Description Given in Heavy Face Type Only

Piece	Ref.	Description	Drawing Reference
160122	2	Top Plate	9968-943
158990	3	Glass Cover	8163-98
160203	4	Bracket	10914-201
160275	5	Contact Spring	8385-2219
160277	6	Contact Spring	8385-2220
160526	7	Heater Element (10 Ohms. Res.) for Refs. A and Ah	9065-204
160527	7a	Heater Element (20 Ohms. Res.) for Refs. Aa and Ad.	9065-204
160528	7b	Heater Element (2.5 Ohms. Res.) for Ref. Ab	9065-204
162574	7c	Heater Element (20 Ohms. Res.) for Ref. Ac	9065-204
163116	7d	Heater Element (60 Ohms. Res.) for Ref. Ae	9065-204
163664	7e	Heater Element (15 Ohms. Res.) for Refs. Af and Aj ..	9065-204
164015	7f	Heater Element (10 Ohms. Res.) for Ref. Ag	9065-204
160378	8	Terminal Connector	8244-122
	9	Terminal Post with Nuts and Washers (Inc. 1-9a, 1-10, 2-11, 2-12, 1-13 and 1-15)	12451-
161725	9a	Terminal Post only, for Ref. 9	8094-2207
29103	10	Nut	8109-194
29101	11	Nut	8109-193
29102	12	Washer	7828-139

UNION SWITCH & SIGNAL CO.

STYLE "TH" THERMAL RELAY

Zachary C. Gillihan 2008

Order by Plate, Piece, Reference and Abbreviated Description Given in Heavy Face Type Only

Piece	Ref.	Description	Drawing Reference
72948	13	Nut.....	8109-383
164468	14	Gasket.....	8078-19
69705	15	Washer.....	7828-287
160230	16	Link.....	11893-488
160508	17	Name Plate.....	8225-342
65245	18	Rivet for Ref. 16.....	10301-21
	19	Machine Screw No. 10-30x3/4" Rd. Hd. Br. with Nut Ref. 21.....	12471-
	20	Screw with Nut Ref. 21.....	12471-
160470	20a	Screw only, for Ref. 20.....	8098-919
26942	21	Nut for Refs. 19 and 20.....	8109-184