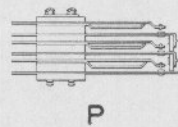
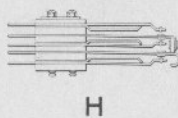
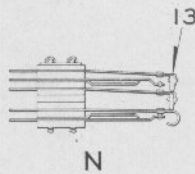
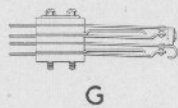
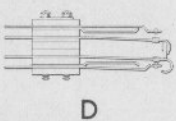
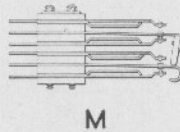
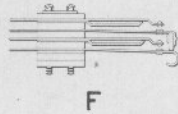
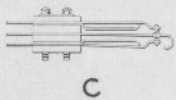
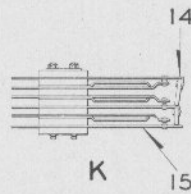
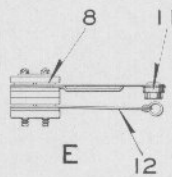
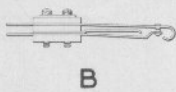
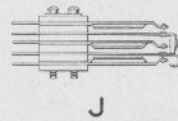
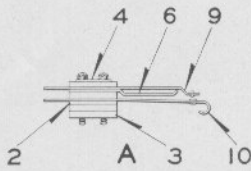


Zachary C. Gillihan 2008



Contact Sections for Style "L-10" Relays

Zachary C. Gillihan 2008

UNION SWITCH & SIGNAL CO.

PLATE **E-5088**

Style "L-10" Relay

Detail Parts

Contact Sections

Refs. K, M, N and P can be used in Glass Case only because of the height of these stacks.

For Complete Relays refer to Plate E-5080.

Order by Plate, Piece, Reference and Abbreviated Description Given in Heavy Face Type Only

Piece	Ref.	Description	Drawing Reference
190196	A	One Front Contact Stack Assembly	B-12660-4
185048	B	One Back Contact Stack Assembly	B-12660-4
168500	C	One Front and One Back Contact Stack Assembly ..	B-12660-4
	D	One Front and One Back Independent Contact Stack Assembly	B-12660-4
	E	One Front Contact Stack Assembly	B-12660-26
171123	F	Two Front Contact Stack Assembly	B-12660-4
168502	G	Two Back Contact Stack Assembly	B-12660-4
190199	H	One Front and Two Back Contact Stack Assembly ..	B-12660-4
168501	J	Two Front and One Back Contact Stack Assembly ..	B-12660-4
102337	K	Two Front Ind. and One Back Ind. Contact Stack Assembly (For use in Glass Case only)	B-12660-23
190216	M	Two Front and Two Back Contact Stack Assembly (For use in Glass Case only)	B-12660-21
	N	Ind. One Front and One Back Special with Extra Load Spring (For use in Glass Case only)	B-12660-24
190221	P	Three Front Contact Stack Assembly (For use in Glass Case only)	B-12660-23
152718	2	Insulation, $\frac{1}{16}$ " Thick	8750-1460
174235	3	Insulation, $\frac{1}{8}$ " Thick	8750-2503
152720	4	Plate	7828-275
152733	5	Ins. Bushing, length $\frac{37}{64}$ "	B-10266-1
168557	5a	Ins. Bushing, length $\frac{57}{64}$ "	B-10266-1
152732	5b	Ins. Bushing, length $\frac{13}{32}$ "	B-10266-1
160279	5c	Ins. Bushing, length $\frac{23}{32}$ "	B-10266-1

Style "L-10" Relay

Detail Parts

Contact Sections

(Continued)

Order by Plate, Piece, Reference and Abbreviated
Description Given in Heavy Face Type Only

Piece	Ref.	Description	Drawing Reference
175482	5d	Ins. Bushing, length $\frac{39}{32}$ "	B-10266-1
160283	5e	Ins. Bushing, length $1\frac{1}{64}$ "	B-10266-1
160299	5f	Ins. Bushing, length $1\frac{1}{32}$ "	B-10266-1
152736	5g	Ins. Bushing, length $1\frac{3}{64}$ "	B-10266-1
152726	6	Contact Spring Stop	8385-2166
	7	Machine Screw, 3-56x $\frac{5}{8}$ " Fil. Hd. S. (N.P.)	
	7a	Machine Screw, 3-56x $\frac{13}{16}$ " Fil. Hd. S. (N.P.)	
	7b	Machine Screw, 3-56x $\frac{15}{16}$ " Fil. Hd. S. (N.P.)	
	7c	Machine Screw, 3-56x $1\frac{1}{8}$ " Fil. Hd. S. (N.P.)	
	7d	Machine Screw, 3-56x $1\frac{1}{4}$ " Fil. Hd. S. (N.P.)	
166018	8	Connector	8244-142
152725	9	Contact Spring Complete	8385-2166
152728	10	Contact Spring Complete	8385-2167
106086	11	Contact Spring Complete (Silver Imp. Carbon Tip)	8385-2611
106084	12	Contact Spring Complete	8385-2610
152730	13	Contact Spring Complete	8385-2167
161331	14	Contact Spring Complete	8385-2227
173103	15	Contact Spring Complete	8385-2290

