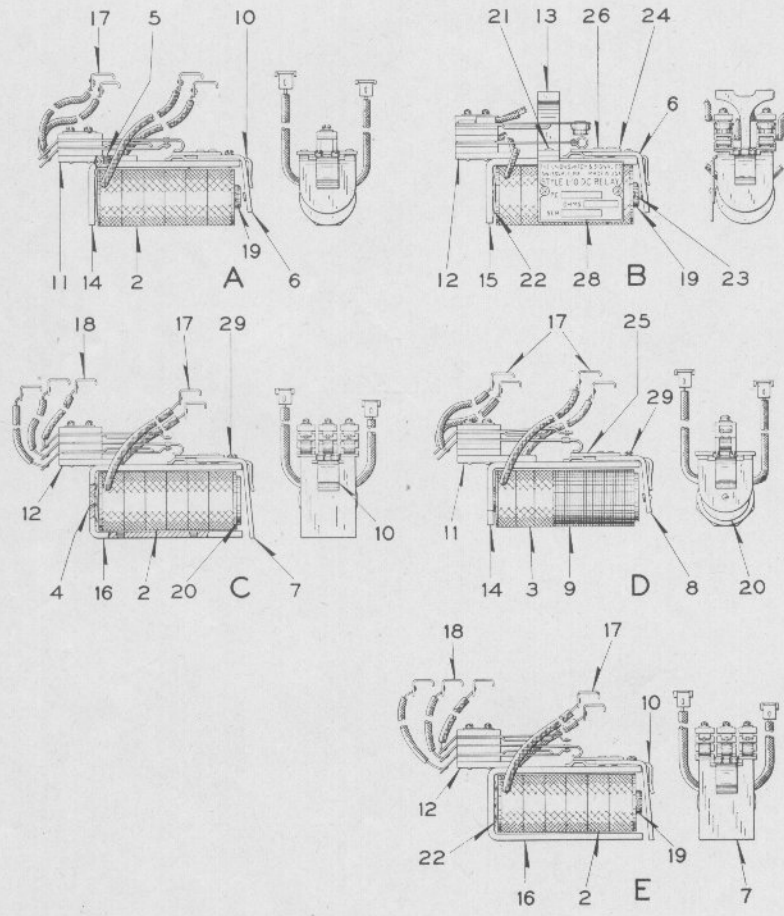


Zachary C. Gillihan 2008



Relay Units for Style "L-10" Relays

Style "L-10" Relay Detail Parts Relay Units

For Complete Relays refer to Plate E-5080.

All Coils listed on this Plate include Terminal Connectors on Leads.

**Order by Plate, Piece, Reference and Abbreviated
Description Given in Heavy Face Type Only**

Piece	Ref.	Description	Drawing Reference
	A	1-Way Style "L-10" Relay Unit (For use in Glass Case) (Orders should specify requirements by referring to Refs. 2 to 3 of this Plate for Magnet Coil and to Plate E-5088 for Contact Assemblies)	
	B	2-Way Style "L-10" Relay Unit with Silver to Silver Imp. Carbon Contacts (For use in Glass Case) (Orders should specify requirements by referring to Refs. 2 to 3 of this Plate for Magnet Coil and to Plate E-5088 for Contact Assemblies)	
	C	3-Way Style "L-10" Relay Unit (Large Core Face, for use in Metal Case) (Orders should specify requirements by referring to Refs. 2 to 3 of this Plate for Magnet Coil and to Plate E-5088 for Contact Assemblies)	
	D	1-Way Style "L-10" Relay Unit (Slow Acting, for use in Glass Case) (Orders should specify requirements by referring to Ref. 3 of this Plate for Magnet Coil and to Plate E-5088 for Contact Assemblies)	
	E	3-Way Style "L-10" Relay Unit (Small Core Face, for use in Metal Case) (Orders should specify requirements by referring to Refs. 2 to 3 of this Plate for Magnet Coil and to Plate E-5088 for Contact Assemblies)	
154871	2	Coil, 0.028-Ohms	8133-382
157000	2a	Coil, 0.055-Ohms	8133-382
174412	2b	Coil, 0.10-Ohms	8133-382
168201	2c	Coil, 0.220-Ohms	8133-382
157115	2d	Coil, 0.275-Ohms	8133-382
210195	2e	Coil, 0.88-Ohms	8133-382
187524	2f	Coil, 2-Ohms	8133-382
185200	2g	Coil, 4.5-Ohms	8133-382

Zachary C. Gillihan 2008

PLATE **E-5086**

UNION SWITCH & SIGNAL CO.

Style "L-10" Relay

Detail Parts

Relay Units

(Continued)

Order by Plate, Piece, Reference and Abbreviated
Description Given in Heavy Face Type Only

Piece	Ref.	Description	Drawing Reference
194602	2h	Coil, 7-Ohms.....	8133-382
209146	2j	Coil, 20-Ohms.....	8133-382
183250	2k	Coil, 72-Ohms.....	8133-382
187730	2 m	Coil, 112-Ohms.....	8133-382
157888	2n	Coil, 175-Ohms.....	8133-382
165214	2p	Coil, 280-Ohms.....	8133-382
168445	2q	Coil, 425-Ohms.....	8133-382
154872	2r	Coil, 750-Ohms.....	8133-382
170996	3	Coil, 240-Ohms (For Slow Acting Relay Unit).....	8133-407
	4	Machine Screw, No. 10-30x $\frac{5}{8}$ " Flat Hd. S. (N.P.)	
	5	Machine Screw, No. 6-40x $\frac{1}{4}$ " Flat Hd. S. (N.P.)	
185954	6	3-Way Armature with Insulation, Rivets and Core Pin (Core Pin unfiled) for Refs. A and B.....	8157-355
156361	7	3-Way Armature with Insulation and Rivets. For Refs. C and E.....	8157-363
166135	7a	2-Way Armature with Insulation, Rivets and Stop Pins. For Ref. C.....	8157-381
185960	8	1-Way Armature with Insulation, Rivets and Core Pin (Core Pin unfiled) for Ref. D.....	8157-355
158914	9	Washer for Ref. D (28 required).....	7828-363
152756	10	Armature Stop.....	11893-432
156872	11	Contact Plate for Refs. A and D.....	11893-434
152751	12	Contact Plate for Refs. B, C and E.....	11893-434
106134	13	Supporting Bracket for Ref. B.....	8231-75
156867	14	Back Strap for Refs. A and D.....	8162-230

Style "L-10" Relay

Detail Parts

Relay Units

(Continued)

**Order by Plate, Piece, Reference and Abbreviated
Description Given in Heavy Face Type Only**

Piece	Ref.	Description	Drawing Reference
106137	15	Back Strap for Ref. B.....	8162-230
185816	16	Back Strap for Refs. C and E.....	8162-228
122306	17	Terminal for Refs. A, B and D and all Coils.....	8244-112
185844	18	Terminal for Refs. C and E except coils.....	8244-112
161589	19	Magnet Core Complete for Refs. A, B and E.....	8101-304
169124	20	Magnet Core Complete for Refs. C and D.....	8101-346
	21	Machine Screw, No. 10-30x $\frac{5}{16}$ " Flat Hd. S. (Tin Pl.)	
175630	22	Spring Washer.....	7828-374
	23	Cotter, $\frac{1}{16}$ "x $\frac{3}{4}$ " (N.P.)	
152737	24	3-Way Armature Bakelite.....	8750-2321
171146	25	1-Way Armature Bakelite.....	8750-2471
143762	26	Eyelet Rivet. For attaching armature bakelite to armature.....	12579-2
	27	Tubing, .097" I.D.x.157" O.D. (Specify length desired) (Not shown)	
163284	28	Name Plate with Strap for Ref. B.....	11893-511
	29	Machine Screw, No. 6-40x $\frac{5}{32}$ " Fil. Hd. S. (N.P.)	