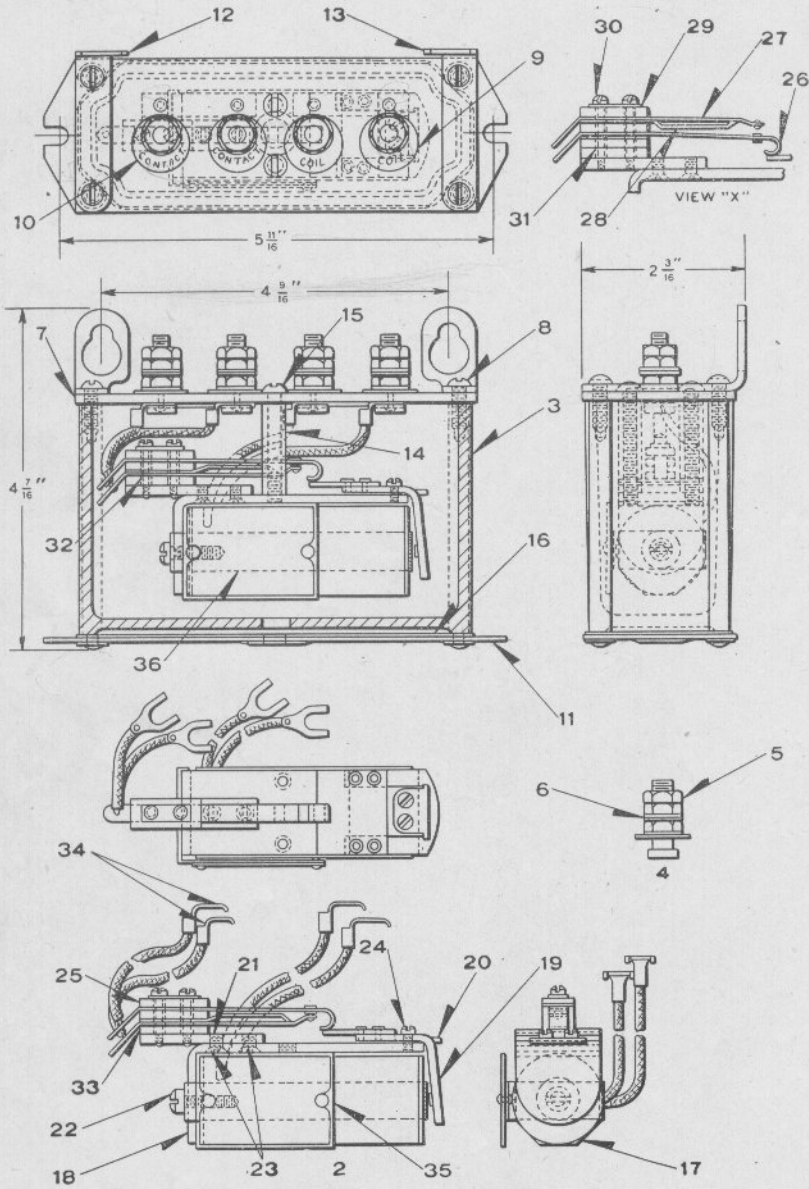


Zachary C. Gillihan 2008



Details of Style "L-10" D. C. Relay
(1-Point)

UNION SWITCH & SIGNAL CO.

DETAILS OF STYLE "L-10" D. C. RELAY
(1 POINT)

For Complete Relays Refer to Plate E-5080.

Order by Plate, Piece, Reference and Abbreviated Description Given in Heavy Face Type Only.

1 Point Style "L-10" D. C. Relay Unit (Without Case)					
Piece	Ref.	Ohms	Coils	Contact Combination	Drawing Reference
154832	2	.028	Ref. 17	O. F. & 1 B. (Low Voltage)	B-12671-3
154833	2a	780	Ref. 17a	1F & O. B. (Low Voltage)	B-12671-3
157116	2b	0.275	Ref. 17b	O. F. & 1B. (Low Voltage)	B-12671-3
157001	2c	.055	Ref. 17c	O. F. & 1B. (Low Voltage)	B-12671-3
157889	2d	245	Ref. 17d	1F & O. B. (Low Voltage)	B-12671-3
159802	2e	0.275	Ref. 17b	1F. & O. B. (Low Voltage)	B-12671-3
Piece	Ref.	Description			Drawing Reference
156835	3	Case only for Style L-10 Relay			8163-302
	4	Terminal Post with Nuts and Washers (Inc. 1-4a, 3-5 and 2-6).....			12451
37154	4a	Terminal Post only, for Ref. 4			8094-757
49	5	Nut.....			8109-1
53	6	Washer.....			7828-5
156883	7	Terminal Board only			9968-920
	8	Machine Screw No. 8-36x $\frac{1}{2}$ " Rd. Hd. B. for fastening Ref. 7 to Case.			
142777	9	Tag (Lettered "Coil").....			8988-75
142777	10	Tag (Lettered "Contact").....			8988-75

Zachary C. Gillihan 2008

PLATE E-5085

UNION SWITCH & SIGNAL CO.

DETAILS OF STYLE "L-10" D. C. RELAY

(1 POINT)

(Continued)

For Complete Relays Refer to Plate E-5080.

Order by Plate, Piece, Reference and Abbreviated Description Given in Heavy Face Type Only.

Piece	Ref.	Description	Drawing Reference
156869	11	Base Plate.....	11893-470
156870	12	L. H. Bracket.....	11893-471
156871	13	R. H. Bracket.....	11893-471
156866	14	Spacer.....	8350-660
	15	Machine Screw No. 10-30x1½" Rd. Hd. Br.	
157959	16	Gasket.....	8078-1473
154871	17	Coil (.028 ohms) for Ref. 2.....	8133-383
154872	17a	Coil (780 ohms) for Ref. 2a.....	8133-383
157115	17b	Coil (.275 ohms) for Ref. 2b and 2e.....	8133-383
157000	17c	Coil (.055 ohms) for Ref. 2c.....	8133-383
157888	17d	Coil (245 ohms) for Ref. 2d.....	8133-383
156867	18	Back Strap.....	8162-230
152744	19	Armature.....	8157-355
152756	20	Armature Stop.....	11893-432
156872	21	Contact Plate.....	11893-469
	22	Machine Screw No. 10-30x½" Fil. Hd. S.	
	23	Machine Screw No. 6-40x¼" Flat Hd. S. for fastening Ref. 21 to Ref. 18.	
	24	Machine Screw No. 6-40x⅜" Fil. Hd. S.	
152719	25	Insulation.....	8750-1460

UNION SWITCH & SIGNAL CO.

DETAILS OF STYLE "L-10" D. C. RELAY

(1 POINT)

(Continued)

For Complete Relays Refer to Plate E-5080.

Order by Plate, Piece, Reference and Abbreviated Description Given in Heavy Face Type Only.

Piece	Ref.	Description	Drawing Reference
152728	26	Contact Spring.....	8385-2167
152725	27	Contact Spring.....	8385-2166
152726	28	Contact Spring Stop.....	8385-2166
152720	29	Washer.....	7828-275
	30	Machine Screw No. 3-56x5/8" Fil. Hd. S.	
152732	31	Insulating Bushing (7/16" Long).....	B-10266-1
152733	32	Insulating Bushing (3/8" Long).....	B-10266-1
152718	33	Insulation.....	8750-1460
133634	34	Slotted Terminal.....	8244-120
156864	35	Name Plate with Strap.....	11893-468
152759	36	Magnet Core.....	8101-304