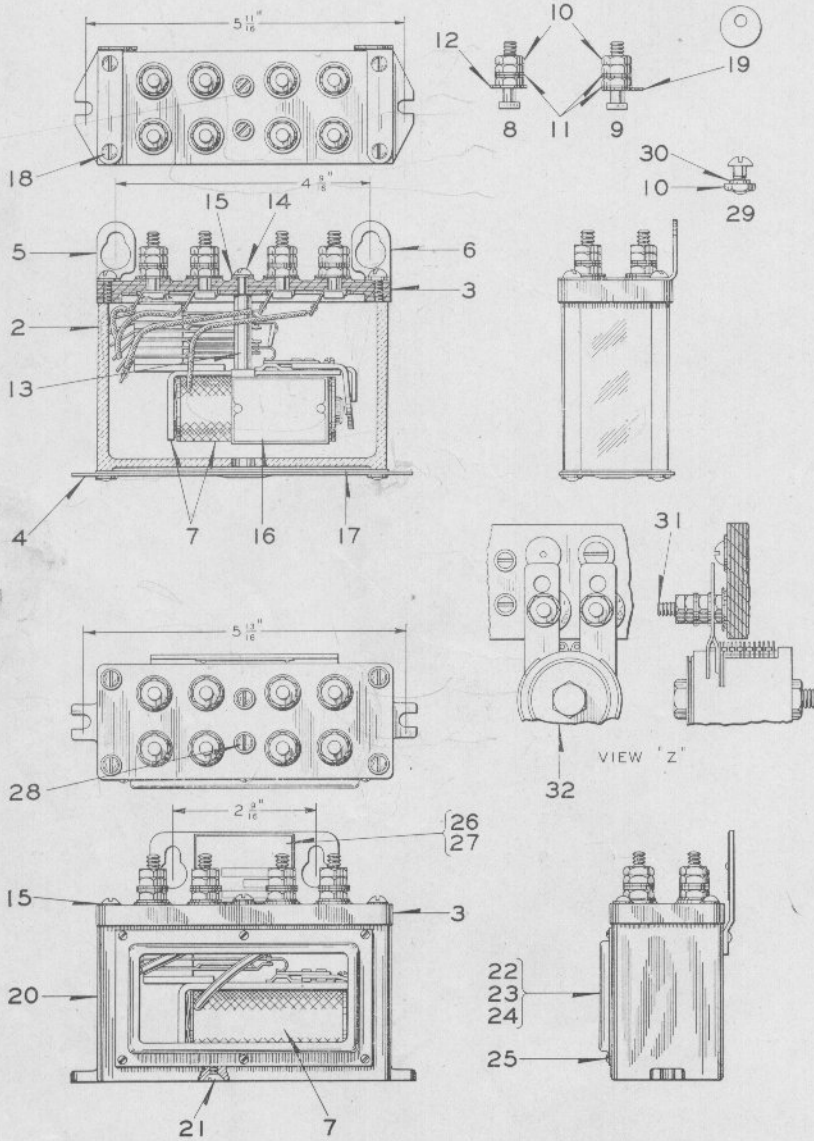


Zachary C. Gillihan 2008



Style "L-10" Relay Details

Zachary C. Gillihan 2008

UNION SWITCH & SIGNAL CO.

PLATE **E-5082**

Style "L-10" Relay

Detail Parts

For complete Relays refer to Plate E-5080.

For Relay Units refer to Plate E-5086.

For Contact Combinations refer to Plate E-5088.

Order by Plate, Piece, Reference and Abbreviated
Description Given in Heavy Face Type Only

Piece	Ref.	Description	Drawing Reference
156835	2	Case.....	8163-302
178104	3	Terminal Board.....	9968-1071
156869	4	Base Plate Complete.....	11893-470
156870	5	L.H. Bracket.....	11893-471
156871	6	R.H. Bracket.....	11893-471
	7	Relay Unit (When ordering refer to Plate E-5086)..	B-12671-
	8	Terminal Post with Nuts and Washers (Used when Tag Ref, 19 is not used) (Inc. 1-9a, 3-10, 2-11 and 1-12).....	12451-
	9	Terminal Post with Nuts, Washers and Tag (Inc. 1-9a, 3-10, 3-11 and 1-19) (Orders should specify marking desired on Tag).....	12451-
123633	9a	Terminal Post Only, for Refs. 8 and 9.....	8094-1192
29103	10	Nut.....	8109-194
29102	11	Washer.....	7828-139
29104	12	Washer.....	7828-138
178602	13	Spacer.....	8350-660
	14	Machine Screw, No. 10-30x1 $\frac{7}{8}$ " Rd. Hd. Br. (N.P.) (For Relays using Spacer Ref. 13)	
	14a	Machine Screw, No. 10-30x $\frac{9}{16}$ " Rd. Hd. Br. (N.P.) (For Relays not using Spacer Ref. 13)	
44618	15	Washer.....	7828-184
163284	16	Name Plate Complete (D.C. Name Plate).....	11893-511
213341	16a	Name Plate Complete (For Slow Acting Relay) (D.C. Name Plate).....	11893-511
213340	16b	Name Plate Complete (A.C. Name Plate).....	11893-511

Zachary C. Gillihan 2008

PLATE **E-5082**

UNION SWITCH & SIGNAL CO.

Style "L-10" Relay

Detail Parts

(Continued)

Order by Plate, Piece, Reference and Abbreviated
Description Given in Heavy Face Type Only

Piece [#]	Ref.	Description	Drawing Reference
157959	17	Gasket.....	8078-1473
	18	Machine Screw, No. 8-36x $\frac{3}{4}$ " Rd. Hd. Br. (N.P.)	
142777	19	Tag (Orders should specify marking desired).....	8988-75
186969	20	Case with Bracket.....	B-12674-3
	21	Machine Screw, No. 8-36x $\frac{7}{16}$ " Flat Hd. Br. (N.P.)	
154843	22	Glass Retainer.....	11893-449
154939	23	Gasket.....	8078-1460
154840	24	Glass.....	8163-294
	25	Machine Screw, No. 4-48x $\frac{3}{16}$ " Rd. Hd. Br. (N.P.)	
154834	26	Name Plate.....	8225-330
	27	Drive Screw, No. 4x $\frac{3}{16}$ " Rd. Hd. Hardened (Cad. Pl.)	
	28	Machine Screw, No. 10-30x $\frac{1}{2}$ " Rd. Hd. Br. (N.P.) with two Washers Ref. 15 and one Nut Ref. 28a	
26942	28a	Nut for Ref. 28.....	8109-184
	29	Machine Screw, No. 14-24x $\frac{1}{2}$ " Rd. Hd. Br. (N.P.) with Nut Ref. 10 and Washer Ref. 30 (For plugging holes in Top Plate when Terminal Posts are not used)	
53627	30	Washer.....	7828-218
	31	Terminal Post with Nuts and Washers (Inc. 1-31a, 4-10 and 3-11).....	12451-
186848	31a	Terminal Post Only for Ref. 31.....	8094-2207
170328	32	Style "RE-4" Rectifier (For details see Plate S-625)	C-9135-58