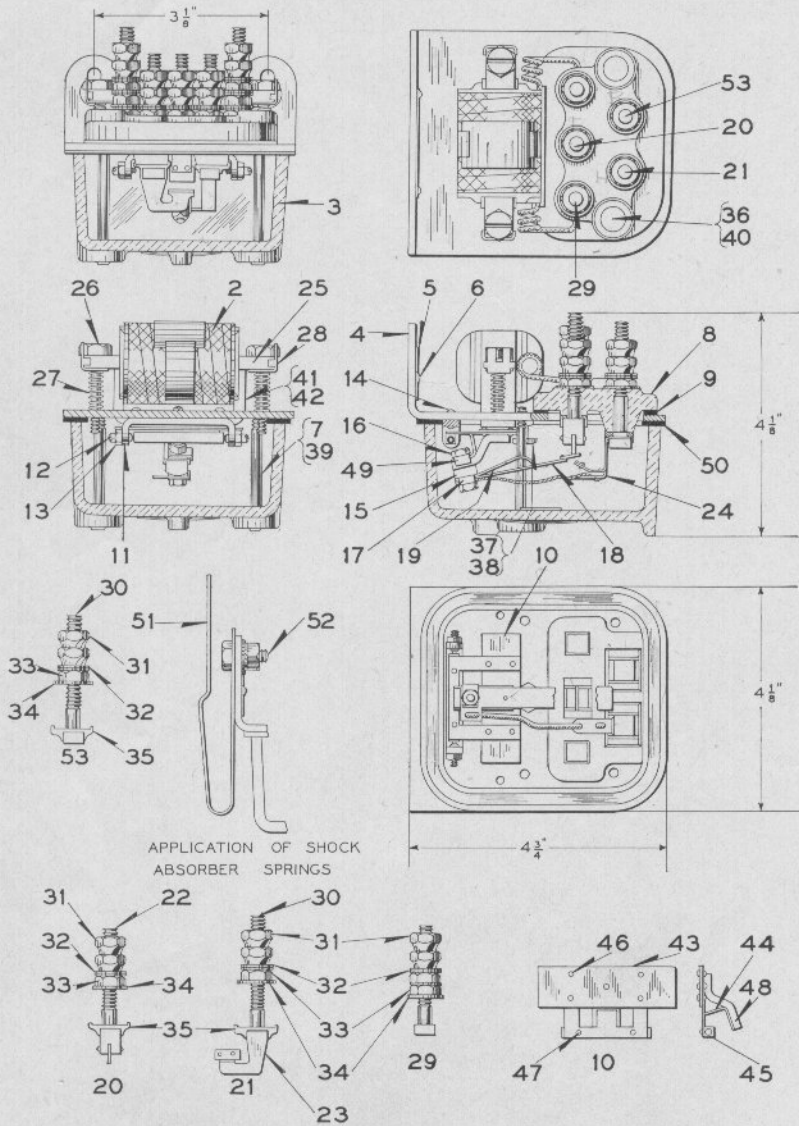


Zachary C. Gillihan 2008



Style DNL-3 Single Point Relay
Line and Track
Detail Parts

Zachary C. Gillihan 2008

UNION SWITCH & SIGNAL CO.

PLATE **E-5075**

Style DNL-3 Single Point Relay Line and Track

Detail Parts

For complete Relays refer to Plate E-5076 covering the Style DNL-4 Relay.
Use this Plate for ordering repair parts.

Order by Plate, Piece, Reference and Abbreviated
Description Given in Heavy Face Type Only

Piece	Ref.	Description	Drawing Reference
135321	2	Coil, Complete, .14-Ohm.....	8133-346
135322	2a	Coil, Complete, 78-Ohms.....	8133-347
135842	2b	Coil, Complete, 44-Ohms.....	8133-347
136973	2c	Coil, Complete, .05 Ohm.....	8133-346
138134	2d	Coil, Complete, 125-Ohms.....	8133-347
138650	2e	Coil, Complete, 30-Ohms.....	8133-347
140303	2f	Coil, Complete, 8-Ohms.....	8133-347
141999	2g	Coil, Complete, 5-Ohms.....	8133-347
158282	2h	Coil, Complete, 295-Ohms.....	8133-347
178163	2j	Coil, Complete, 250-Ohms.....	8133-347
181850	2k	Coil, Complete, 60-Ohms.....	8133-347
157613	3	Glass Case Complete with Ventilator.....	8163-273
135314	4	Top Plate, Complete with Magnet Cores and Armature Bracket (Inc. 1-4a, 1-11, 2-14, 2-41 and 2-42)	10914-66
135313	4a	Top Plate Only.....	10914-66
135297	5	Name Plate.....	8225-262
	6	Drive Screw No. 4x $\frac{3}{16}$ " (Nickel Plated) for attaching Ref. 5 to Ref. 4.	
	7	Machine Screw No. 10-30x2 $\frac{1}{8}$ " Flat Hd. Br. (Nickel Plated) for attaching Ref. 4 to Ref. 3.	
148846	8	Terminal Board with Gasket Ref. 9.....	9968-725
135326	9	Gasket.....	8078-1419
135289	10	Armature, Complete.....	8157-325
135298	11	Armature Bracket (Not tapped for Pivot Screws)...	8303-97

Zachary C. Gillihan 2008

PLATE **E-5075**

UNION SWITCH & SIGNAL CO.

Style DNL-3 Single Point Relay Line and Track

Detail Parts

(Continued)

Order by Plate, Piece, Reference and Abbreviated
Description Given in Heavy Face Type Only

Piece	Ref.	Description	Drawing Reference
135299	12	Pivot Screw	8378-344
32498	13	Hex. Nut for Ref. 12	8109-223
54921	14	Rivet. For attaching Armature Bracket to Top Plate	10301-1
135301	15	Stud	8095-639
1515	16	Hex. Nut for Ref. 15	8109-23
135300	17	Lock Washer for Ref. 15	8486-374
135294	18	Contact Spring, Complete	8385-2010
135295	19	Spring Stop	11893-281
148624	20	Front Terminal Post, Complete (Inc. 1-22, 2-31, 2-32, 1-33, 1-34 and 1-35)	12451-246
148623	21	Back Terminal Post, Complete (Inc. 1-23, 1-30, 2-31, 2-32, 1-33, 1-34 and 1-35)	12451-245
135308	22	Front Terminal Post, Complete with Silver Tip	8094-2148
135306	23	Back Post, Complete with Silver Tip	8094-2149
135319	24	Connector, Complete	10934-70
135311	25	Backstrap	8162-218
135310	26	Screw	8190-361
135323	27	Coil Spring	8124-144
135296	28	Lock Washer for Ref. 26	8486-373
	29	Terminal Post, with Nuts and Washers (Inc. 1-29a, 2-31, 3-32, 2-33 and 1-34)	12451-
115706	29a	Terminal Post Only, for Ref. 29	8094-1192
130200	30	Terminal Post Only, for Refs. 21 and 53	8094-1192
29101	31	Hex. Nut for Refs. 20, 21, 29 and 53	8109-193
29102	32	Washer for Refs. 20, 21, 29, 52 and 53	7828-139

Zachary C. Gillihan 2008

UNION SWITCH & SIGNAL CO.

PLATE **E-5075**

Style DNL-3 Single Point Relay Line and Track

Detail Parts

(Continued)

Order by Plate, Piece, Reference and Abbreviated
Description Given in Heavy Face Type Only

Piece	Ref.	Description	Drawing Reference
29103	33	Hex. Nut for Refs. 20, 21, 29 and 53.....	8109-194
69705	34	Washer for Refs. 20, 21, 29 and 53.....	7828-287
121616	35	Lock Washer for Refs. 20, 21 and 53.....	8486-362
	36	Machine Screw No. 10-30x $\frac{1}{2}$ " Fil. Hd. Br. (Nickel Plated).	
136117	37	Armature Adjusting Screw.....	8098-429
29956	38	Hex. Nut for Ref. 37.....	8109-202
70539	39	Lead Washer.....	8274-73
44618	40	Washer for Ref. 36.....	7828-184
135315	41	Core.....	8101-309
54937	42	Rivet. For attaching Core to Top Plate.....	10301-50
135288	43	Armature Only.....	8157-325
135290	44	Armature Support.....	11893-282
135292	45	Shaft Complete.....	8160-174
37417	46	Rivet.....	10301-21
54928	47	Rivet.....	10301-21
160211	48	Contact Support.....	11893-486
157891	49	Lock Washer for Ref. 15.....	8486-368
150468	50	Gasket.....	8078-1452
151538	51	Shock Absorber Spring.....	8735-656
	52	Tap Bolt, $\frac{1}{4}$ "-20x $\frac{5}{8}$ " Hex. Hd. (Cad. Pl.) with Washer Ref. 32, $\frac{1}{4}$ " Pl. S. Lock Washer ($\frac{1}{8}$ "x $\frac{1}{8}$ " (Cad. Pl.) and $\frac{1}{4}$ "-20 Hex. Nut (Cad. Pl.).	
	53	Terminal Post with Nuts and Washers (Inc. 1-30, 2-31, 2-32, 1-33, 1-34 and 1-35).....	12451-