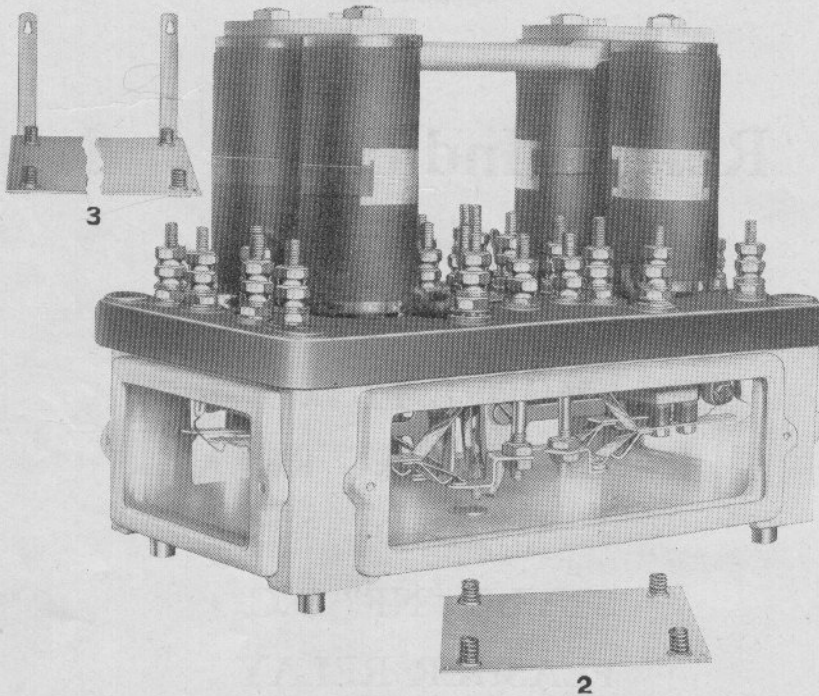


UNION SWITCH & SIGNAL CO.

Zachary C. Gillihan 2008



HEIGHT $9\frac{3}{8}$ " , WIDTH $6\frac{1}{8}$ " , LENGTH $11\frac{7}{8}$ "

MODEL 12 DIRECT CURRENT ENCLOSED INTERLOCKING RELAY

The top plate is of moulded insulating material. The pole pieces, locking pawl, and contact posts are rigidly fixed to the top plate. All terminal posts and insulation conform to A. R. A. Standards. The magnet coils may be replaced without affecting the adjustment of the relay.

In addition to the contact arrangements listed on the opposite page, any combination not requiring more than four contact fingers and six contacts on each side can be furnished.

UNION SWITCH & SIGNAL CO.

MODEL 12 DIRECT CURRENT ENCLOSED INTERLOCKING RELAY

Unless otherwise specified in the order, relays will be furnished with silver to graphite front contacts and silver to silver back contacts.

High Voltage Contacts can be supplied when required. Orders should specify the resistance to which each pair of magnets is to be wound.

For Details see Plates E-5045 and E-5046

For Style "DX-13" Interlocking Relay refer to Plate E-5100

Order by Plate, Piece, Reference and Abbreviated Description Given in Heavy Face Type Only

Piece	Ref.	Description	Drawing Reference
	A	Direct Current Enclosed Model 12 Interlocking Relay, four front and two back contacts for each pair of magnets, with Shock Absorber Springs Ref. 2 for Shelf Mounting.....	C-8121-6
	A-1	Direct Current Enclosed Model 12 Interlocking Relay, two front and four back contacts for each pair of magnets, with Shock Absorber Springs Ref. 2 for Shelf Mounting.....	C-8121-6
	A-2	Direct Current Enclosed Model 12 Interlocking Relay, three front and three back contacts for each pair of magnets, with Shock Absorber Springs Ref. 2 for Shelf Mounting.....	C-8121-6
	A-3	Direct Current Enclosed Model 12 Interlocking Relay, four front and two back contacts for each pair of magnets, with Shock Absorber Springs Ref. 3 for Wall Mounting.....	C-8121-6
	A-4	Direct Current Enclosed Model 12 Interlocking Relay, two front and four back contacts for each pair of magnets, with Shock Absorber Springs Ref. 3 for Wall Mounting.....	C-8121-6
	A-5	Direct Current Enclosed Model 12 Interlocking Relay, three front and three back contacts for each pair of magnets, with Shock Absorber Springs Ref. 3 for Wall Mounting.....	C-8121-6
	B	Direct Current Enclosed Model 12 Interlocking Relay, four front and two back contacts for each pair of magnets (one of the front contacts on each side for Automatic Flagman, see Refs. G and H, Plate E-5046) with Shock Absorber Springs Ref. 2 for Shelf Mounting.....	C-8121-6

Zachary C. Gillihan 2008

PLATE E-5040

UNION SWITCH & SIGNAL CO.

MODEL 12 DIRECT CURRENT ENCLOSED INTERLOCKING RELAY
(Continued)

For Details see Plates E-5045 and E-5046

For Style "DX-13" Interlocking Relay refer to Plate E-5100

Order by Plate, Piece, Reference and Abbreviated Description Given in
Heavy Face Type Only

Piece	Ref.	Description	Drawing Reference
	B-1	Direct Current Enclosed Model 12 Interlocking Relay , four front and two back contacts for each pair of magnets (one of the front contacts on each side for Automatic Flagman, see Refs. G and H, Plate E-5046) with Shock Absorber Springs Ref. 3 for Wall Mounting.....	C-8121-6
	C	Direct Current Enclosed Model 12 Interlocking Relay , four front and two back contacts for each pair of magnets (two of the front contacts on each side for Automatic Flagman, see Refs. G and H, Plate E-5046) with Shock Absorber Springs Ref. 2 for Shelf Mounting.....	C-8121-10
	C-1	Direct Current Enclosed Model 12 Interlocking Relay , four front and two back contacts for each pair of magnets (two of the front contacts on each side for Automatic Flagman, see Refs. G and H, Plate E-5046) with Shock Absorber Springs Ref. 3 for Wall Mounting.....	C-8121-10
176197	2	Shock Absorber Spring Base for Shelf Type Mounting	12404-27
176162	3	Shock Absorber Spring Base for Wall Type Mounting	12404-28