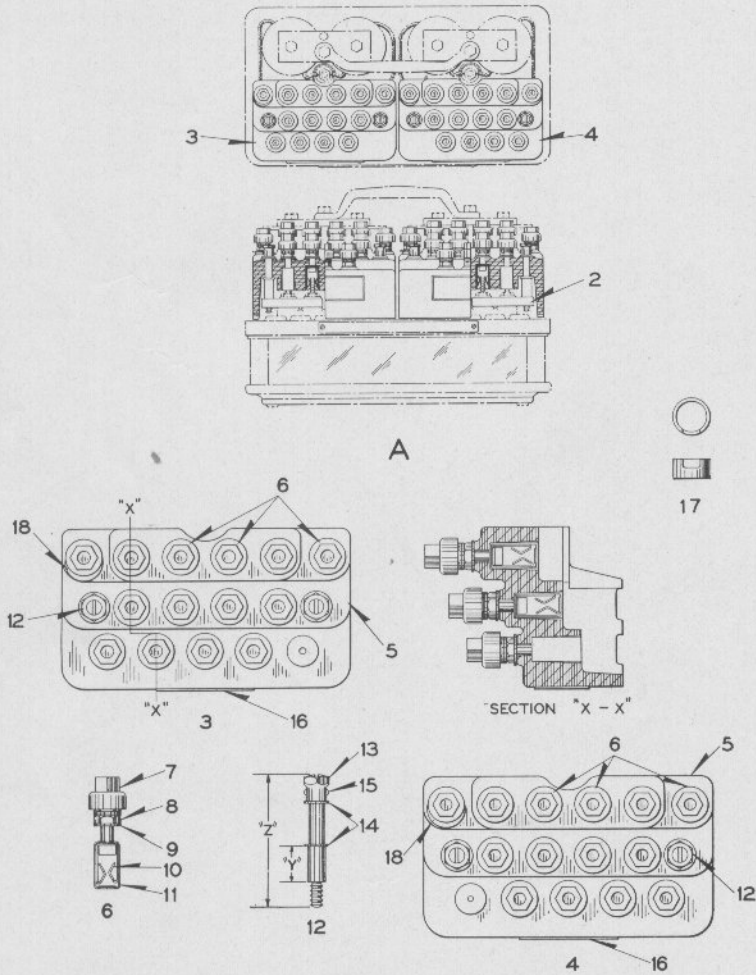


Zachary C. Gillihan 2008



Plug Couplers for D. C. Relays

("DX-13" Interlocking)

Plug Couplers for D. C. Relays ("DX-13" Interlocking)

All Terminal Posts fitted with Insulated Nuts unless otherwise noted.
Insulating Sleeves Ref. 17 for Nut Ref. 8 are not included with Plug Couplers
and if desired, orders should so state.

Order by Plate, Piece, Reference and Abbreviated
Description Given in Heavy Face Type Only

Piece	Ref.	Description	Drawing Reference
221082	A	L.H. and R.H. Plug Couplers Complete with Clamping Pieces (Inc. 4-2, 1-3 and 1-4) for "DX-13" Interlocking Relay.....	C-16749-3
108875	2	Clamping Piece for Ref. A.....	12770-25
221081	3	L.H. Plug Coupler with Insulated Nuts for Ref. A..	C-16749-3
221230	4	R.H. Plug Coupler with Insulated Nuts for Ref. A..	C-16749-3
221227	5	Plug Coupler Body for Refs. 3 and 4 (Orders should specify whether for L.H. or R.H. so proper holes can be drilled through).....	C-16750-4
	6	Terminal Post with Nuts, Washers, Insulated Nut, Contact Springs and Receptacle (Inc. 1-6a, 1-7, 2-8, 3-9, 2-10 and 1-11).....	12451-
122489	6a	Terminal Post Only.....	8094-1192
105713	7	Insulated Nut.....	12770-1
127260	8	Nut.....	8109-194
29102	9	Washer.....	7828-139
216193	10	Contact Spring.....	8385-2631
216192	11	Receptacle.....	11893-883
	12	Screw with Sleeve, Washers and Rivet (Inc. 1-12a, 1-13, 2-14 and 1-15) "Y" dim. $\frac{49}{64}$ ", "Z" dim. $2\frac{49}{64}$ "	12471-
108877	12a	Screw Only ("Y" dim. $\frac{49}{64}$ ", "Z" dim. $2\frac{49}{64}$ ").....	8190-300
108876	13	Sleeve.....	8350-946
216197	14	Washer.....	7828-401
54921	15	Rivet.....	10301-1
224740	16	Name Plate.....	8225-586
224689	17	Insulating Sleeve (for Nut Ref. 8).....	8095-752
142777	18	Tag (Orders should specify marking desired).....	8988-75