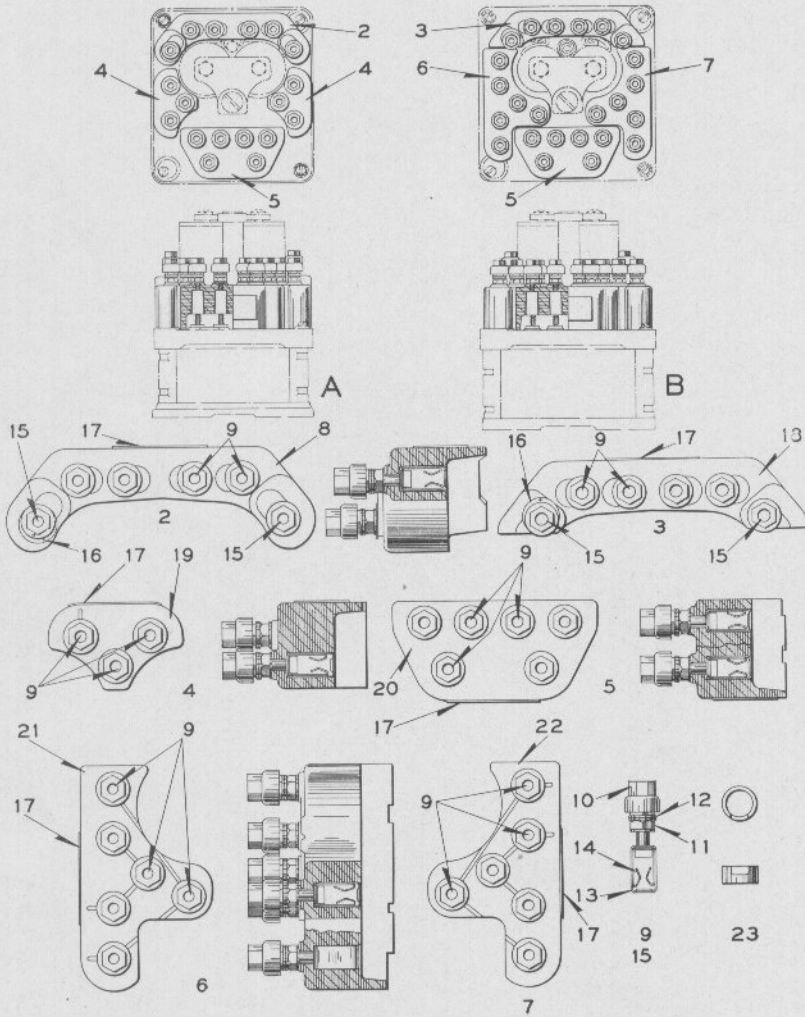


Zachary C. Gillihan 2008



Plug Couplers for D. C. Relays
(Model 12 Polarized)

Plug Couplers for D. C. Relays

(Model 12 Polarized)

All Terminal Posts fitted with Insulated Nuts unless otherwise noted.
 Insulating Sleeves Ref. 23 for Nut Ref. 11 are not included with Plug Couplers
 and if desired, orders should so state.

Order by Plate, Piece, Reference and Abbreviated
 Description Given in Heavy Face Type Only

Piece	Ref.	Description	Drawing Reference
225291	A	Plug Couplers Complete (Inc. 1-2, 2-4 and 1-5) for Model 12 Polarized Relays having small size Top Plate as shown on Plate E-4825)	C-16749-16
225292	B	Plug Couplers Complete (Inc. 1-3, 1-5, 1-6 and 1-7) for Model 12 Polarized Relays having large size Top Plate as shown on Plates E-4826 and E-4830)	C-16749-16
225151	2	Rear Plug Coupler for Ref. A	C-16749-15
225288	3	Rear Plug Coupler for Ref. B	C-16749-15
225290	4	Plug Coupler Complete for Polar Contacts for Ref. A	C-16749-16
225289	5	Plug Coupler Complete for Neutral Contacts for Refs. A and B	C-16749-16
225149	6	L.H. Plug Coupler Complete for Polar Contacts for Ref. B	C-16749-14
225150	7	R.H. Plug Coupler Complete for Polar Contacts for Ref. B	C-16749-14
225142	8	Plug Coupler Body for Ref. 2	C-16750-16
	9	Terminal Post with Nuts, Washers, Insulated Nut, Contact Springs and Receptacle (Inc. 1-9a, 1-10, 2-11, 3-12, 1-13 and 2-14)	12451-
122489	9a	Terminal Post Only	8094-1192
105713	10	Insulated Nut	12770-1
127260	11	Nut	8109-194
29102	12	Washer	7828-139
216192	13	Receptacle for Ref. 9	11893-883
222956	13a	Receptacle for Ref. 15	11893-883
216193	14	Contact Spring for Ref. 9	8385-2631
222957	14a	Contact Spring for Ref. 15	8385-2631

Zachary C. Gillihan 2008

PLATE **E-5035-4**

UNION SWITCH & SIGNAL CO.

Plug Couplers for D. C. Relays

(Model 12 Polarized)

(Continued)

Order by Plate, Piece, Reference and Abbreviated
Description Given in Heavy Face Type Only

Piece	Ref.	Description	Drawing Reference
	15	Terminal Post with Nuts, Washers, Insulated Nut, Contact Springs and Receptacle (Inc. 1-9a, 1-10, 2-11, 3-12, 1-13a and 2-14a)	12451-
142777	16	Tag (Orders should specify marking desired)	8988-75
224741	17	Name Plate	8225-586
225144	18	Plug Coupler Body for Ref. 3	C-16750-17
225145	19	Plug Coupler Body for Ref. 4	C-16750-18
225146	20	Plug Coupler Body for Ref. 5	C-16750-19
225147	21	Plug Coupler Body for Ref. 6	C-16750-20
225148	22	Plug Coupler Body for Ref. 7	C-16750-21
224689	23	Insulating Sleeve (for Nut Ref. 11)	8095-752