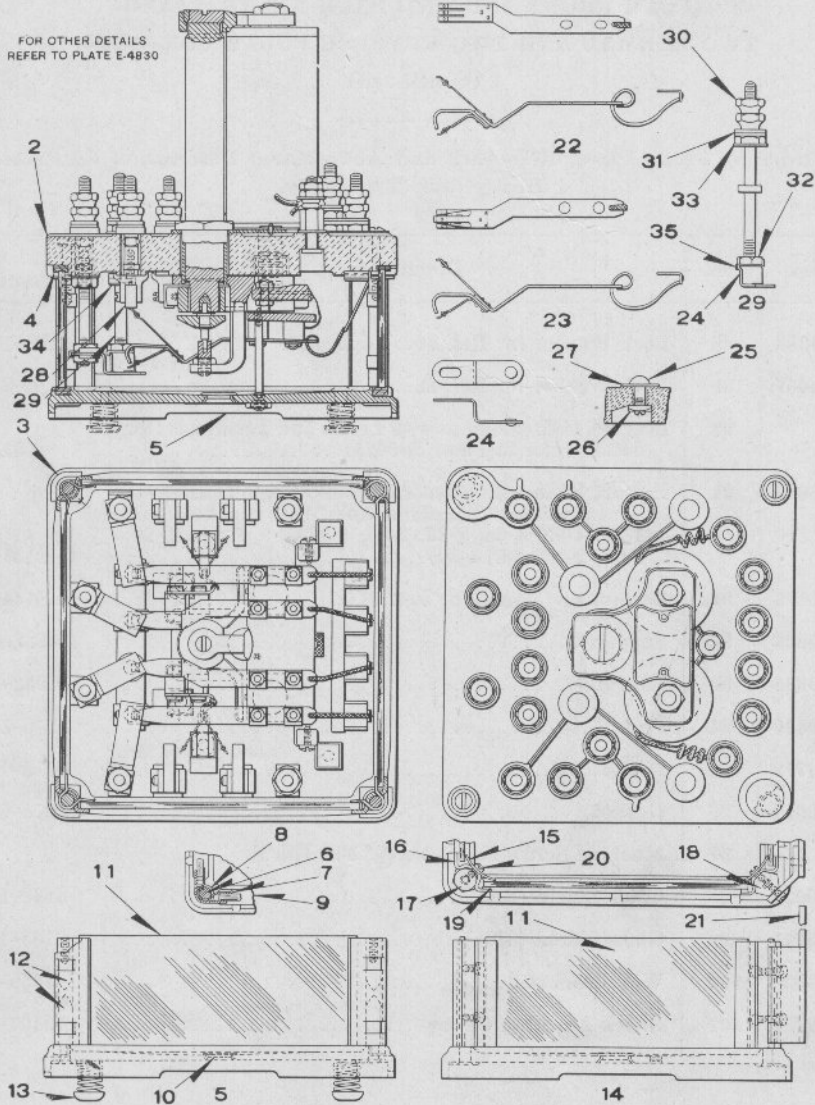


UNION SWITCH & SIGNAL COMPANY



DETAILS OF MODEL 12 POLARIZED RELAY  
(FOUR FRONT AND FOUR BACK NEUTRAL AND  
TWO NORMAL AND TWO REVERSE POLAR CONTACTS)

# Zachary C. Gillihan 2008

PLATE E-4826

## UNION SWITCH & SIGNAL COMPANY

### DETAILS OF MODEL 12 POLARIZED RELAY (FOUR FRONT AND FOUR BACK NEUTRAL AND TWO NORMAL AND TWO REVERSE POLAR CONTACTS)

Order by Plate, Piece, Reference and Abbreviated Description Given in  
Heavy Face Type Only.

Piece	Ref.	Description	Drawing Reference
77268	2	Top Plate with Gaskets.....	C-8141-4
59317	3	Gasket (Corner) for Ref. 2.....	8078-1089
51654	4	Gasket for Ref. 2.....	8078-774
121722	5	Base Plate with Posts, Supports, Gaskets, Ventilator, Shields and Linings (Inc. 1-5b, 4-6, 4-7, 4-8, 4-9, 1-10, 4-11 and 8-12) (For shelf type relays only).....	C-8141-5
145307	5a	Base Plate with Posts, Supports, Gaskets, Ventilator, Shields, Linings and Shock Absorber Springs (Inc. 1-5c, 4-6, 4-7, 4-8, 4-9, 1-10, 4-11, 8-12 and 4-13) (For shelf type relays only).....	C-8141-5
57541	5b	Base Plate only, for Ref. 5.....	C-8141-4
145290	5c	Base Plate only, for Ref. 5a.....	C-8141-10
51559	6	Post.....	8114-298
44224	7	Support.....	10932-10
44225	8	Support.....	10932-11
65642	9	Gasket.....	8078-771
34340	10	Ventilator.....	C-7459-6
121721	11	Glass Shield (Side and End).....	8163-255
130381	12	Lining.....	10932-52
410218	13	Shock Absorber Spring	
123808	14	Base Plate with Supports, Posts, Gaskets, Screws, Glass Shields, Ventilator and Wall Bracket (Inc. 1-5b, 4-9, 1-10, 4-11, 4-15, 4-16, 4-17, 4-18, 8-19, 12-20 and 1-21).....	C-8141-9
60606	15	Support.....	10932-38

# Zachary C. Gillihan 2008

PLATE E-4826

## UNION SWITCH & SIGNAL COMPANY

### DETAILS OF MODEL 12 POLARIZED RELAY (FOUR FRONT AND FOUR BACK NEUTRAL AND TWO NORMAL AND TWO REVERSE POLAR CONTACTS) (Continued)

Order by Plate, Piece, Reference and Abbreviated Description Given in  
Heavy Face Type Only.

Piece	Ref.	Description	Drawing Reference
60608	16	Support .....	10932-48
60610	17	Post .....	8115-148
119778	18	Post .....	8115-148
60612	19	Gasket .....	8078-807
	20	Machine Screw No. 8-36x $\frac{5}{16}$ " Fil. Hd. S. (Cad. Pl.)	
121895	21	Wall Bracket .....	C-8141-8
79948	22	R. H. Contact Spring (L. V.) Front and Back .....	8385-1722
121760	23	L. H. Contact Spring (L. V.) Front and Back .....	8385-1737
121768	24	Back Contact Post (Silver Tip $\frac{1}{4}$ " Diam.) L. V. ....	8094-2034
	25	Dummy Post with Washer and Nut (Inc. 1-25a, 1-26 and 1-27) .....	12471
113474	25a	Dummy Post only, for Ref. 25 .....	8098-1360
38427	26	Nut for Ref. 25 .....	8109-254
36088	27	Washer for Ref. 25 .....	7826-136
61690	28	Graphite Contact Tip .....	8341-356
	29	Terminal Post with Nuts, Washers, Lock Washers, and L. V. Back Post (Inc. 1-24, 1-29a, 2-30, 2-31, 3-32, 1-33, 1-34 and 2-35) .....	12451
121750	29a	Terminal Post only, for Ref. 29 .....	8094-1217
29101	30	Nut for Ref. 29 .....	8109-193
29102	31	Washer for Ref. 29 .....	7828-139
29103	32	Nut for Ref. 29 .....	8109-194

UNION SWITCH & SIGNAL COMPANY

DETAILS OF MODEL 12 POLARIZED RELAY  
 (FOUR FRONT AND FOUR BACK NEUTRAL AND  
 TWO NORMAL AND TWO REVERSE POLAR CONTACTS)

(Continued)

Order by Plate, Piece, Reference and Abbreviated Description Given in  
 Heavy Face Type Only.

Piece	Ref.	Description	Drawing Reference
29104	33	Washer for Ref. 29.....	7828-138
29063	34	Lock Washer for Ref. 29.....	8486-111
32186	35	Lock Washer for Ref. 29.....	8486-129
For other Details refer to Plate E-4830.			