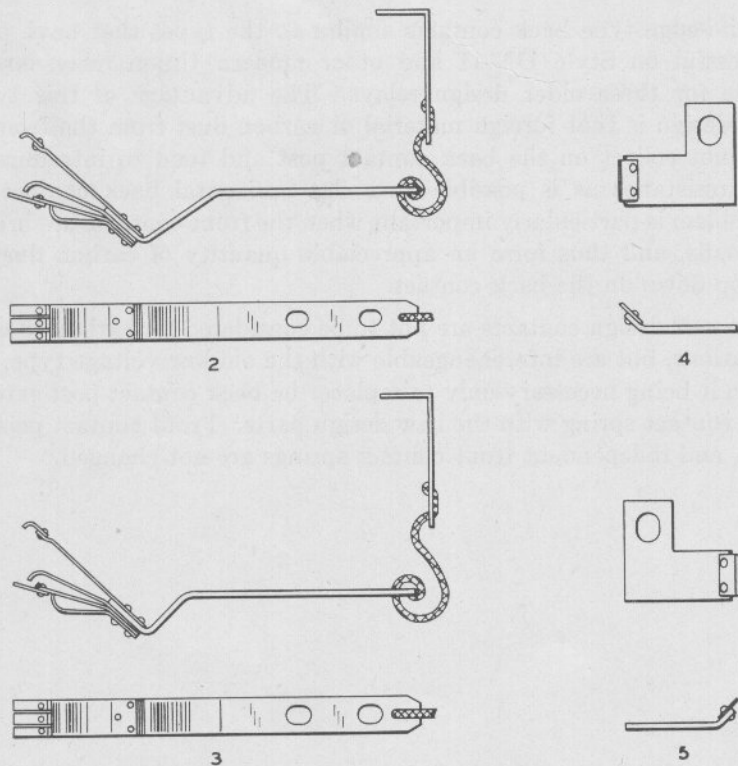
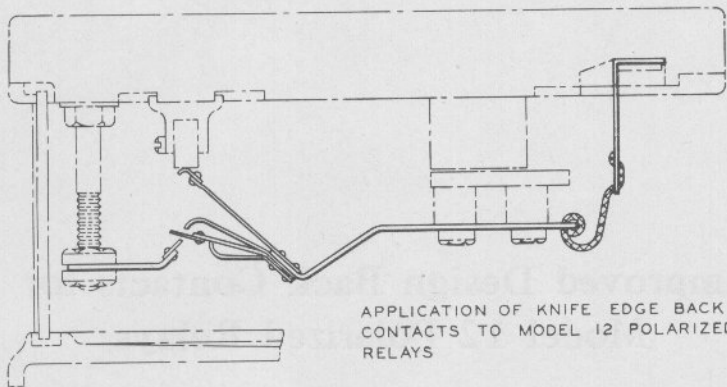


## Zachary C. Gillihan 2008 Improved Design Back Contacts for Model 12 Polarized Relays

Knife-edge type back contacts similar to the types that have proven so successful on Style DN-11 and other modern Union relays are now available for these older design relays. The advantage of this type of contact design is that foreign material or carbon dust from the front contact cannot collect on the back contact post and tend to introduce high contact resistance as is possible on a flat horizontal back contact post. This problem is particularly important when the front contacts are breaking heavy loads, and thus form an appreciable quantity of carbon dust that may drop down on the back contact.

The new design contacts are not to be considered for carbon to carbon combinations, but are interchangeable with the old low voltage type, silver to silver, it being necessary only to replace the back contact post extension and the contact spring with the new design parts. Front contact posts and carbons, and independent front contact springs are not changed.

# Zachary C. Gillihan 2008



## Knife Edge Back Contacts and Contact Springs

## Model 12 Polarized Relay Detail Parts

### Knife Edge Back Contacts and Contact Springs

For Model 13 D. C. Neutral Relay Knife Edge Contacts, See Plate E-4834.

Order by Plate, Piece, Reference and Abbreviated  
Description Given in Heavy Face Type Only

Piece	Ref.	Description	Drawing Reference
101840	2	Front and Back Contact Spring Complete as shown, for Model 12 Polarized Relay having 2N-2R Polar Contacts .....	8385-2527
101841	3	Front and Back Contact Spring Complete as shown, for Model 12 Polarized Relay having 4N-4R Polar Contacts .....	8385-2528
101838	4	L.H. Back Contact for Model 12 Polarized Relays having 2N-2R or 4N-4R Polar Contacts .....	8094-2364
101839	5	R.H. Back Contact for Model 12 Polarized Relays having 2N-2R or 4N-4R Polar Contacts .....	8094-2364

Zachary C. Gillihan 2008