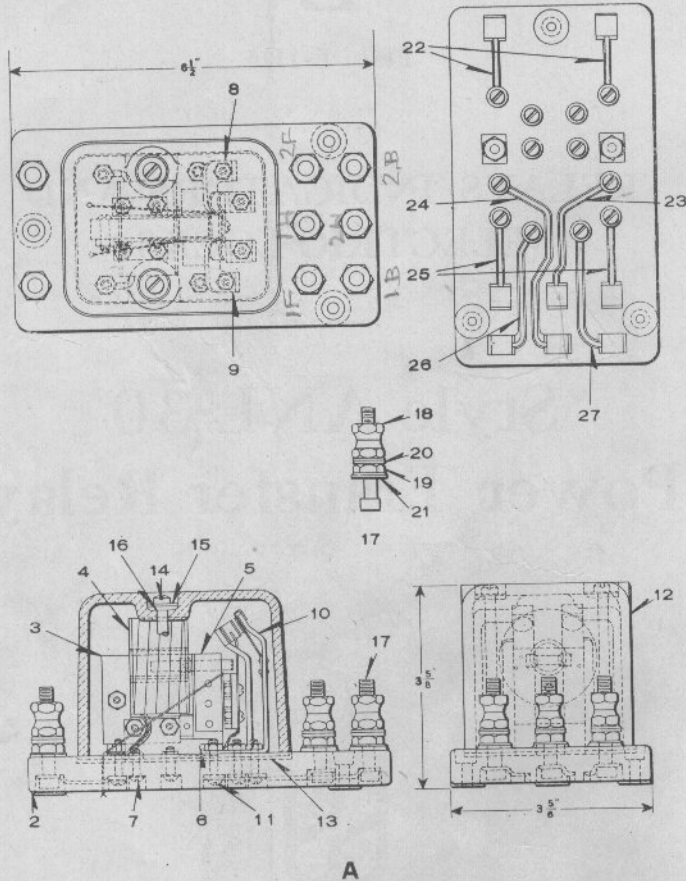


UNION SWITCH & SIGNAL COMPANY
 Zachary C. Gillihan 2008



STYLE ANL-30 POWER TRANSFER RELAY

The ANL-30 relay is wound for any voltage up to 110 volts 60 cycles or 55 volts 25 cycles. It is recommended for use as a power transfer relay to cut over from A. C. to D. C. supply at interlockings, automatic block signaling and high-way crossing installations. The maximum contact combination of the ANL-30 is two front and two back non-independent contacts.

use with separate transformers

UNION SWITCH & SIGNAL COMPANY
Zachary C. Gillihan 2008
 STYLE ANL-30 POWER TRANSFER RELAY

Order by Plate, Piece, Reference and Abbreviated Description Shown in
 Heavy Face Type Only

Drawing references are shown for convenience in checking material with shipping lists and invoices.

Piece	Ref.	Description	Drawing Reference
143738	A	Style ANL-30 Power Transfer Relay, complete with two front and two back contacts, 110 volts, 60 cycles, spec. 1716 (Without Glass Cover).....	B-12635-2
145199	Aa	Style ANL-30 Power Transfer Relay, complete with two front and two back contacts, 110 volts, 60 cycles, spec. 1716, with Glass Cover.....	B-12635-2
143739	Ab	Style ANL-30 Power Transfer Relay, complete with two front and two back contacts, 8-10 Volts, 60 cycles, spec. 1717 with Glass Cover.....	B-12635-2
149099	Ac	Style ANL-30 Power Transfer Relay, complete with two front and two back contacts, 10-12 volts, 60 cycles, spec. 1854 with Glass Cover.....	B-12635-2
146780	Ad	Style ANL-30 Power Transfer Relay, complete with two front and two back contacts, 12-15 volts, 60 cycles, or 8-10 volts, 25 cycles, spec. 1805, with Glass Cover.....	B-12635-2
150099	Ae	Style ANL-30 Power Transfer Relay, complete with two front and two back contacts, 12-15 volts, 60/100 cycles, spec. 1805, with Glass Cover (Unsealed).....	B-12635-2
143721	2	Base only.....	9968-801
143713	3	Magnet Core.....	8101-321
143720	4	Coil, 110 volts, 60 cycles.....	8133-361
143737	4a	Coil, 8-10 volts, 60 cycles.....	8133-361
149098	4b	Coil, 10-12 volts, 60 cycles.....	8133-361
146779	4c	Coil, 12-15 volts, 60 cycles.....	8133-361
150098	4d	Coil, 12-15 volts, 60/100 cycles.....	8133-374

UNION SWITCH & SIGNAL COMPANY
Zachary C. Gillihan 2008
 STYLE ANL-30 POWER TRANSFER RELAY

(Continued)

Order by Plate, Piece, Reference and Abbreviated Description Shown in
 Heavy Face Type Only

Drawing references are shown for convenience in checking material with shipping lists and invoices.

Piece	Ref.	Description	Drawing Reference
143735	5	Armature, complete.....	8358-464
143730	6	Pin only.....	8097-852
	7	Machine Screw No. 6-40x $\frac{5}{8}$ " Rd. Hd. S. (Cad. Pl.) complete with Washer Ref. 7a and Hex. Nut Ref. 7b.	
113126	7a	Washer only for 7.....	7826-249
48193	7b	Hex. Nut only for 7.....	8265-150
143728	8	R. H. Front Contact Spring, complete.....	8385-2089
143729	9	L. H. Front Contact Spring, complete.....	8385-2089
143725	10	Back Contact Spring, complete.....	8385-2088
	11	Machine Screw No. 8-36x $\frac{11}{16}$ " Rd. Hd. Br. (N. P.) complete with two Washers Ref. 11a and Hex. Nut Ref. 11b.	
17376	11a	Washer only for 11.....	7828-66
28166	11b	Hex. Nut only for 11.....	8109-192
143717	12	Glass Cover.....	8163-295
143610	13	Gasket.....	8078-1440
	14	Machine Screw No. 10-30x $\frac{3}{4}$ " Fil. Hd. S. (Cad. Pl.) complete with Hex. Nut Ref. 14a and Washer Ref. 15, for attaching cover to base.	
73488	14a	Hex. Nut only for 14.....	8265-11
73493	15	Washer for 14.....	7826-78
27182	16	Gasket for 14.....	8078-422

UNION SWITCH & SIGNAL COMPANY
Zachary C. Gillihan 2008
 STYLE ANL-30 POWER TRANSFER RELAY

(Continued)

Order by Plate, Piece, Reference and Abbreviated Description Shown in
 Heavy Face Type Only

Drawing references are shown for convenience in checking material with
 shipping lists and invoices.

Piece	Ref.	Description	Drawing Reference
	17	Terminal Post, with Nuts and Washers (Includes 1-17a, 2-18, 1-19, 2-20 and 1-21).....	12451-
122782	17a	Terminal Post, only for 17.....	8094-1192
29101	18	Hex. Nut, only for 17.....	8109-193
29103	19	Hex. Nut, only for 17.....	8109-194
29102	20	Washer, only for 17.....	7828-139
29104	21	Washer, only for 17.....	7828-138
144027	22	Connector.....	8064-637
144030	23	Connector.....	8064-637
144029	24	Connector.....	8064-637
144028	25	Connector.....	8064-637
144031	26	Connector.....	8064-638
144032	27	Connector.....	8064-638