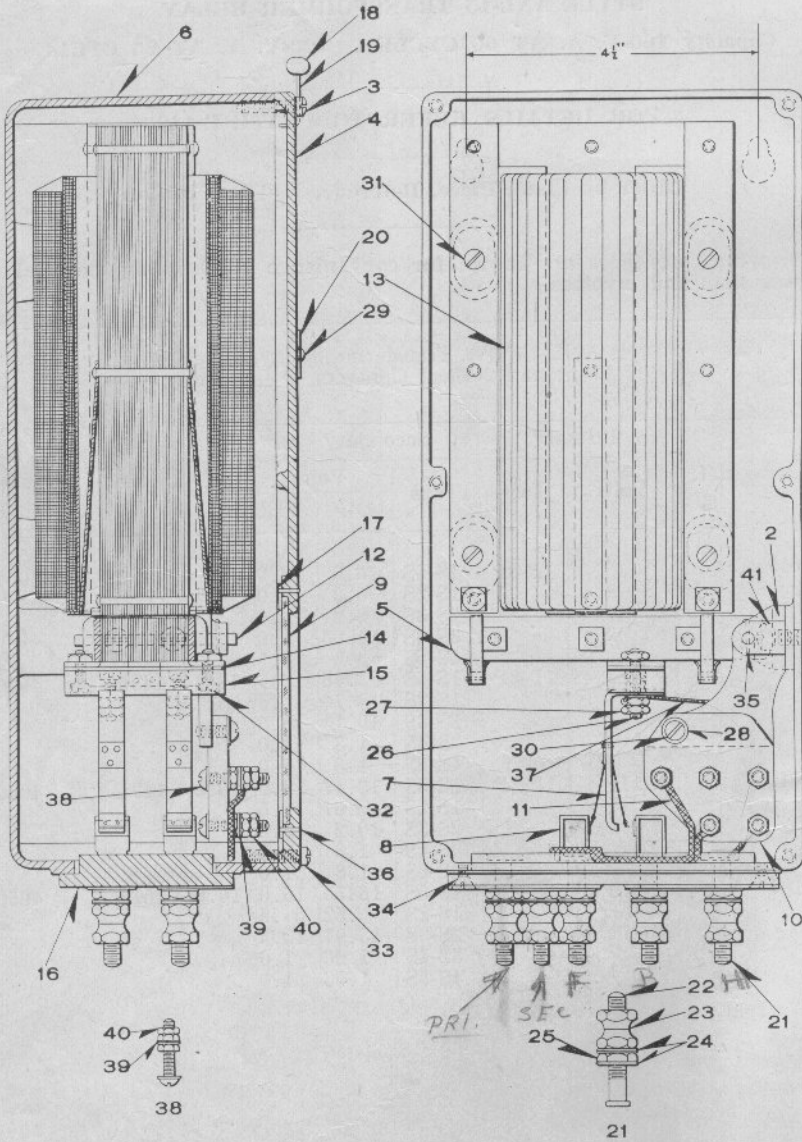


UNION SWITCH & SIGNAL CO.

Zachary C. Gillihan 2008



STYLE ANL-15 TRANSFORMER RELAY

UNION SWITCH & SIGNAL CO.  
**Zachary C. Gillihan 2008**  
 STYLE ANL-15 TRANSFORMER RELAY  
 DETAIL PARTS

FOR COMPLETE RELAY REFER TO PLATE E-1120

Order by Plate, Piece, Reference and Description

Drawing references are shown for convenience in checking material with shipping lists and invoices.

Piece	Ref.	Description	Dwg. Ref.
410091	2	Armature Bearing	
410403	3	Seal Screw .....	410404
405020	4	Cover	
410092	5	Armature, complete	
405021	6	Case	
410093	7	Contact Spring, complete	
410635	7a	Contact Spring, complete (Split)	
135391	8	Terminal Post, complete .....	8094-2150
410095	9	Cover Glass	
410096	10	Terminal Block	
410148	11	Flexible Connector, complete .....	410097
410163	12	Armature Bearing Pin .....	410160
405022	13	Transformer, complete (used with Relay Ref. A, Plate E-1120)	
405044	13a	Transformer, complete (used with Relay Ref. Aa, Plate E-1120) .....	405022
405046	13b	Transformer, complete (used with Relay Ref. Ab, Plate E-1120) .....	405022
405106	13c	Transformer, complete (used with Relay Ref. Ac, Plate E-1120) .....	405022
410165	14	Insulator	
410166	15	Contact Spring Support..	

UNION SWITCH & SIGNAL CO.  
**Zachary C. Gillihan 2008**

STYLE ANL-15 TRANSFORMER RELAY  
 DETAIL PARTS  
 (Continued)

FOR COMPLETE RELAY REFER TO PLATE E-1120

Order by Plate, Piece, Reference and Description

Drawing references are shown for convenience in checking material with shipping lists and invoices.

Piece	Ref.	Description	Dwg. Ref.
410167	16	Panel	
410168	17	Clip	
47608	18	Seal.....	8988-12
	19	Piece Seal Wire, 3" long	
134661	20	Name Plate.....	8225-261
	21	Terminal Post, complete, with Nuts and Washers....	12451-
410170	22	Terminal Post, only for 21.	
29101	23	Hex. Nut for 21.....	8109-193
29102	24	Washer for 21.....	7828-139
29103	25	Hex. Nut for 21.....	8109-194
	26	Machine Screw No. 8-32x $\frac{5}{8}$ " Rd. Hd. Br.	
410169	27	Hex. Nut for 26	
410164	28	Washer for 30	
	29	Machine Screw No. 6-40x $\frac{1}{4}$ " Rd. Hd. Br. (Nickel Plated) for 20	
	30	Machine Screw No. 10-32x $\frac{1}{2}$ " Rd. Hd. Br.	
	31	Machine Screw No. 10-32x2" Rd. Hd. Br.	
	32	Machine Screw No. 8-32x $\frac{1}{2}$ " Fil. Hd. Br.	
	33	Machine Screw No. 10-32x $\frac{3}{4}$ " Fil. Hd. Br.	
	34	Machine Screw No. 8-32x $\frac{3}{8}$ " Flat Hd. Br.	
	35	Piece # 18 B. & S. Gauge Phos. Bronze Wire, $\frac{3}{4}$ " long	

UNION SWITCH & SIGNAL CO.  
**Zachary C. Gillihan 2008**  
 STYLE ANL-15 TRANSFORMER RELAY  
 DETAIL PARTS  
 (Continued)

FOR COMPLETE RELAY REFER TO PLATE E-1120

Order by Plate, Piece, Reference and Description

Drawing references are shown for convenience in checking material with shipping lists and invoices.

Piece	Ref.	Description	Dwg. Ref.
	36	No. 16x $\frac{1}{2}$ " Br. Escutcheon Pin.	
410190	37	Flexible Connector	
	38	Machine Screw No. 8-32x1" Rd. Hd. Br. complete with Nuts and Washers	
17376	39	Washer for 38.....	7828-66
410173	40	Hex. Nut for 38	
	41	Machine Screw No. 14-24x $\frac{1}{2}$ " Fil. Hd. Br.	