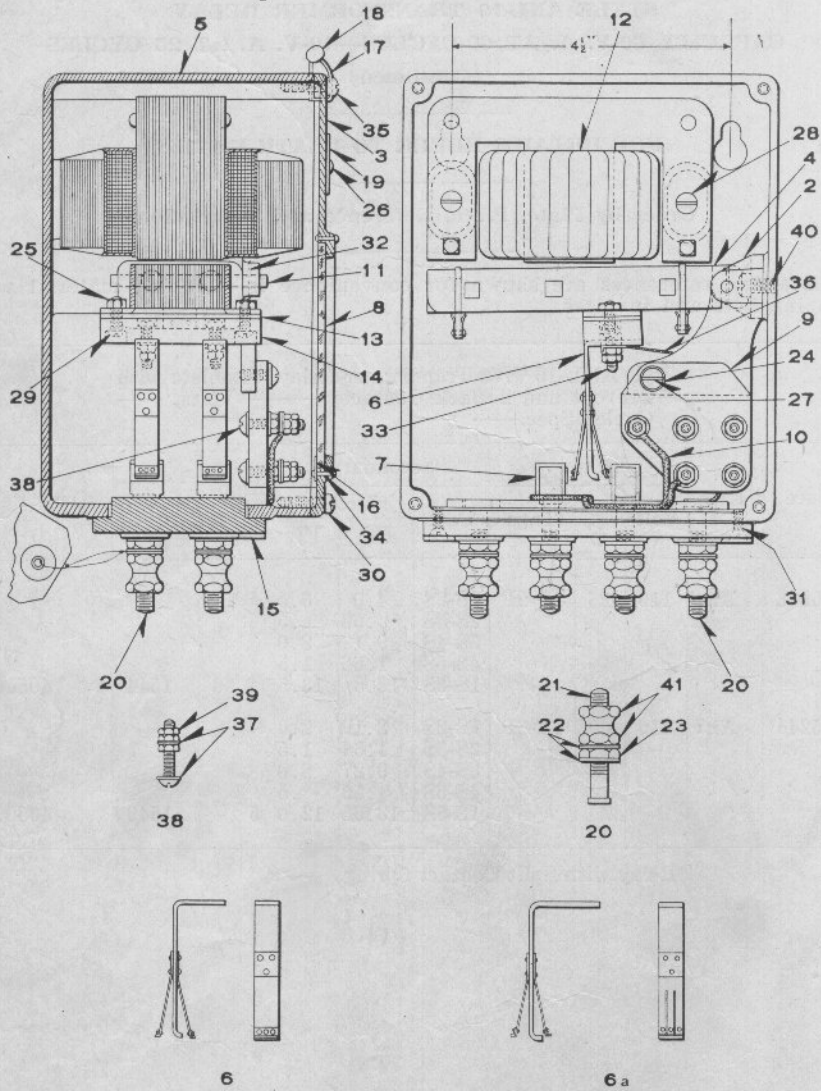


UNION SWITCH & SIGNAL CO.

Zachary C. Gillihan 2008



STYLE ANL-10 TRANSFORMER RELAY

Out of production

UNION SWITCH & SIGNAL CO.
Zachary C. Gillihan 2008
 STYLE ANL-10 TRANSFORMER RELAY
 DETAIL PARTS

FOR COMPLETE RELAY REFER TO PLATE E-1110

Order by Plate, Piece, Reference and Description

Drawing references are shown for convenience in checking material with shipping lists and invoices.

Piece	Ref.	Description	Dwg. Ref.
410091	2	Armature Bearing.	
405002	3	Cover	
410092	4	Armature, complete	
405003	5	Case	
410093	6	Contact Spring, complete	
410635	6a	Contact Spring, complete (split)	
135391	7	Terminal Post, complete.....	8094-2150
410095	8	Cover Glass	
410096	9	Terminal Block	
410851	10	Flexible Connector, complete.....	410097
410163	11	Armature Bearing Pin.....	410160
410183	12	Transformer, complete (used with Relay, Ref. A, Plate E-1110)	
410456	12a	Transformer, complete (used with Relay Ref. Aa, Plate E-1110).....	410183
410476	12b	Transformer, complete (used with Relay Ref. Ab, Plate E-1110).....	410183
410618	12c	Transformer, complete (used with Relay Ref. Ac, Plate E-1110).....	410183
410619	12d	Transformer, complete (used with Relay Ref. Ad, Plate E-1110).....	410183
410620	12e	Transformer, complete (used with Relay Ref. Ae, Plate E-1110).....	410183

UNION SWITCH & SIGNAL CO.
Zachary C. Gillihan 2008
 STYLE ANL-10 TRANSFORMER RELAY
 DETAIL PARTS
 (Continued)

FOR COMPLETE RELAY REFER TO PLATE E-1110

Order by Plate, Piece, Reference and Description

Drawing references are shown for convenience in checking material with shipping lists and invoices.

Piece	Ref.	Description	Dwg. Ref.
410631	12f	Transformer, complete (used with Relay Ref. Af and AK, Plate E-1110).....	410183
410982	12g	Transformer, complete (used with Relay Ref. Ag, Plate E-1110).....	410183
411330	12h	Transformer, complete (used with Relay Ref. Ah, Plate E-1110).....	410183
410621	12j	Transformer, complete (used with Relay Ref. Aj, Plate E-1110).....	410183
412055	12k	Transformer, complete (used with Relay Ref. Am, Plate E-1110).....	410183
412056	12m	Transformer, complete (used with Relay Ref. An, Plate E-1110).....	410183
410165	13	Insulator	
410166	14	Contact Spring Support.	
410167	15	Panel	
410168	16	Clip	
	17	Piece Seal Wire 3" long	
47608	18	Seal.....	8988-12
134661	19	Name Plate.....	8225-261
	20	Terminal Post, complete, with Nuts and Washers....	12451-
410170	21	Terminal Post, only for 20	
29102	22	Washer for 20.....	7828-139
29103	23	Hex. Nut for 20.....	8109-194
410164	24	Washer for 27	

UNION SWITCH & SIGNAL CO.
Zachary C. Gillihan 2008
 STYLE ANL-10 TRANSFORMER RELAY
 DETAIL PARTS
 (Continued)

FOR COMPLETE RELAY REFER TO PLATE E-1110

Order by Plate, Piece, Reference and Description

Drawing references are shown for convenience in checking material with shipping lists and invoices.

Piece	Ref.	Description	Dwg. Ref.	
410169	25	Hex. Nut for 33		
	26	Machine Screw No. 6-40x $\frac{1}{4}$ " Rd. Hd. Br. (Nickel Plated) for 19.		
	27	Machine Screw No. 10-32x $\frac{1}{2}$ " Rd. Hd. Br.		
	28	Machine Screw No. 10-32x2" Rd. Hd. Br.		
	29	Machine Screw No. 8-32x $\frac{1}{2}$ " Fil. Hd. Br.		
	30	Machine Screw No. 10-32x $\frac{1}{2}$ " Fil. Hd. Br.		
	31	Machine Screw No. 8-32x $\frac{3}{8}$ " Flat Hd. Br.		
	32	Piece # 18 B. & S. Gauge Phos. Bronze Wire, $\frac{3}{4}$ " long		
	33	Machine Screw No. 8-32x $\frac{5}{8}$ " Rd. Hd. Br.		
	54928	34	Rivet.....	10301-21
	410171	35	Seal Screw	
	410190	36	Flexible Connector, complete	
	17376	37	Washer for 38.....	7828-66
38		Machine Screw No. 8-32x1" Rd. Hd. Br. complete with Nuts and Washers.		
410173	39	Hex. Nut for 38.		
	40	Machine Screw No. 14-24x $\frac{1}{2}$ " Fil. Hd. Br.		
29101	41	Hex. Nut for 20.....	8109-193	