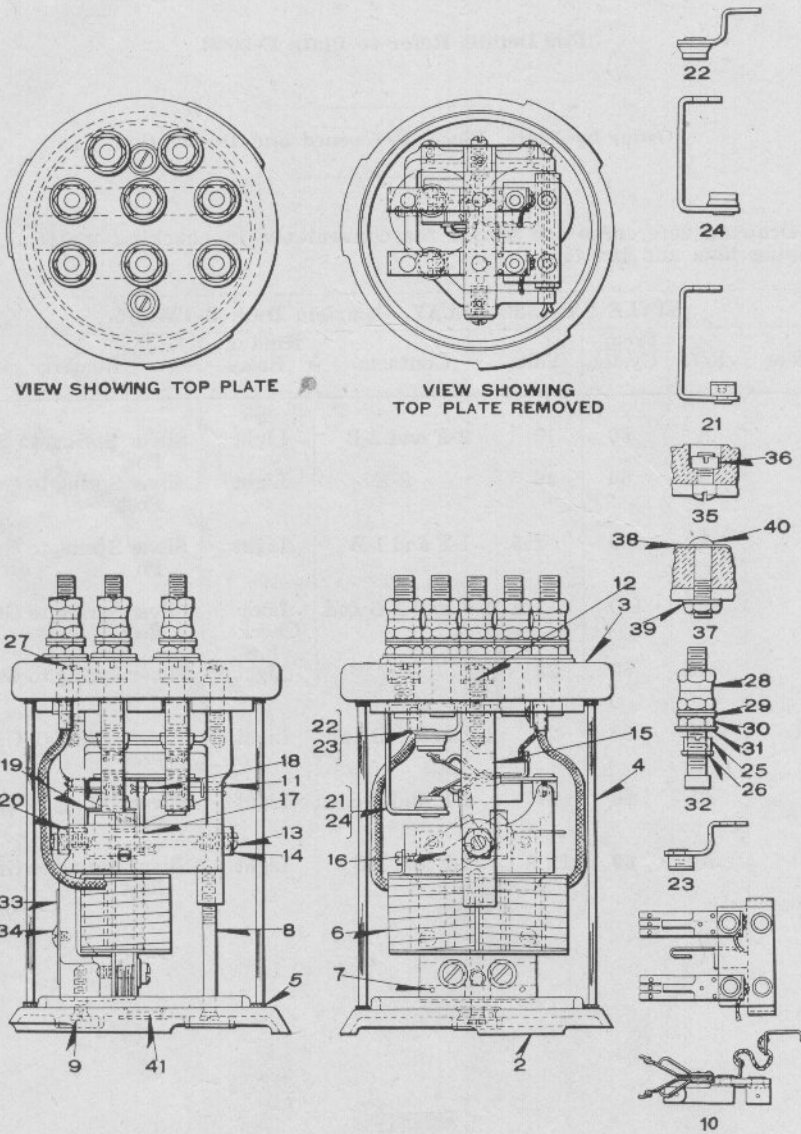


UNION SWITCH & SIGNAL CO.
Zachary C. Gillihan 2008



STYLE ANL-2 RELAY DETAILS

UNION SWITCH & SIGNAL CO.
Zachary C. Gillihan 2008
 STYLE ANL-2 RELAY
 DETAIL PARTS

For Ordering References of Complete Relay Refer to Plate E-1090

Order by Plate, Piece, Reference and Description

Drawing references are shown for convenience in checking material with shipping lists and invoices.

Piece	Ref.	Description	Drawing Reference
130595	2	Base Plate complete with ventilator	B-12577-1
130596	3	Glass Top Plate	B-12577-2
130616	4	Glass Shield	8163-49
116925	5	Gasket	8078-514
	6	Field, complete, 10-Volt, 60 Cycles, Spec. 1422 for A . . .	B-12438-35
	6a	Field, complete, 40-Volt, 60 Cycles, Spec. 1432 for Aa . .	B-12438-35
	6b	Field, complete, 2-5-Volts, 60 Cycles, Spec. 1434 for Ab	B-12438-35
	6c	Field, complete 1-2-Volts, 60 Cycles, Spec. 1453 for Ac	B-12438-35
	6d	Field, complete 23-Volts, 60 Cycles, Spec. 1457 for Ad	B-12438-35
	6e	Field, complete, 23-Volts, 60 Cycles, Spec. 1471 for Ae	B-12438-35
	6f	Field, complete, 27-Volts, 60 Cycles, Spec. 1473 for Af	B-12438-35
	6g	Field, complete, 11.8-Volts, 60 Cycles, Spec. 1477 for Ag	B-12438-35
49069	7	Dowel Pin	8097-336
30915	8	Screw	8098-562
	9	Machine Screw No. 10-30 x $\frac{5}{8}$ " Flat Hd. S. (Cad. Pl.)	
130603	10	Contact Spring complete with bracket for A	8385-1990
131123	10a	Contact Spring complete with Bracket for Aa and Ad	8385-1990
131187	10b	Contact Spring complete with Bracket for Ab, Af and Ag	8385-1990
131972	10c	Contact Spring complete with Bracket for Ac and Ae . .	8385-1990
130618	11	Pin	8097-852

UNION SWITCH & SIGNAL CO.
Zachary C. Gillihan 2008

STYLE ANL-2 RELAY

DETAIL PARTS

(Continued)

For Ordering References of Complete Relay Refer to Plate E-1090

Order by Plate, Piece, Reference and Description

Drawing references are shown for convenience in checking material with shipping lists and invoices.

Piece	Ref.	Description	Drawing Reference
130665	12	Washer for 27.....	7828-3
	13	Trunnion with Nut Ref. 14.....	8378-247
130621	13a	Trunnion only for 13.....	8378-247
535	14	Nut.....	8109-1
130611	15	Link.....	8232-184
131463	16	Armature complete for Aa, Ab, Ac, Ad, Ae, Af and Ag	8157-316
130614	16a	Armature complete for A.....	8157-316
45193	17	Washer.....	7828-184
60286	18	Pin.....	8097-837
130615	19	Armature Stop.....	11893-243
54921	20	Rivet.....	10301-1
131660	21	Back Terminal Post (L.V.) complete for A.....	8094-2129
130608	22	Front Terminal Post (H.V.) complete for Aa, Ab, Ac, Ad, Ae, Af and Ag.....	8094-2117
131658	23	Front Terminal Post (L.V.) complete for A.....	8094-2128
130610	24	Back Terminal Post (H.V.) complete for Ab, Ac, Ae, Af and Ag.....	8094-2116
69706	25	Nut for 32.....	8109-383
70539	26	Washer for 32.....	8274-73
	27	Machine Screw No. 10-30 x $\frac{3}{4}$ " Fil Hd. S.	
29101	28	Nut for 32.....	8109-194

UNION SWITCH & SIGNAL CO.
Zachary C. Gillihan 2008

STYLE ANL-2 RELAY DETAILS

DETAIL PARTS

(Continued)

For Ordering References of Complete Relay Refer to Plate E-1090

Order by Plate, Piece, Reference and Description

Drawing references are shown for convenience in checking material with shipping lists and invoices.

Piece	Ref.	Description	Drawing Reference
29102	29	Washer for 32	7828-139
29103	30	Nut for 32	8109-194
69705	31	Washer for 32	7828-287
	32	Terminal Post complete with Nuts and Washers	12451-
130593	32a	Terminal Post only for 32	8094-1192
130620	33	Name Plate	8225-253
	34	Machine Screw No. 6-40 x $\frac{1}{4}$ " Rd. Hd. Br. (Nickel Pl.) for attaching Name Plate	
	35	Dummy Post No. 14-24 x $\frac{1}{2}$ " Fil. Hd. S. Machine Screw (Cad. Pl.) complete with Nut Ref. 36	12471-
72948	36	Nut for 35	8109-383
	37	Dummy Post, complete with Nut Ref. 30 Washers Ref. 38 and 39	12471-
36088	38	Washer for 37	7826-136
29104	39	Washer for 37	7828-138
79217	40	Machine Screw only No. 14-24 x $1\frac{1}{8}$ " for 37	8098-977
34340	41	Ventilator for 2	B-12577-1