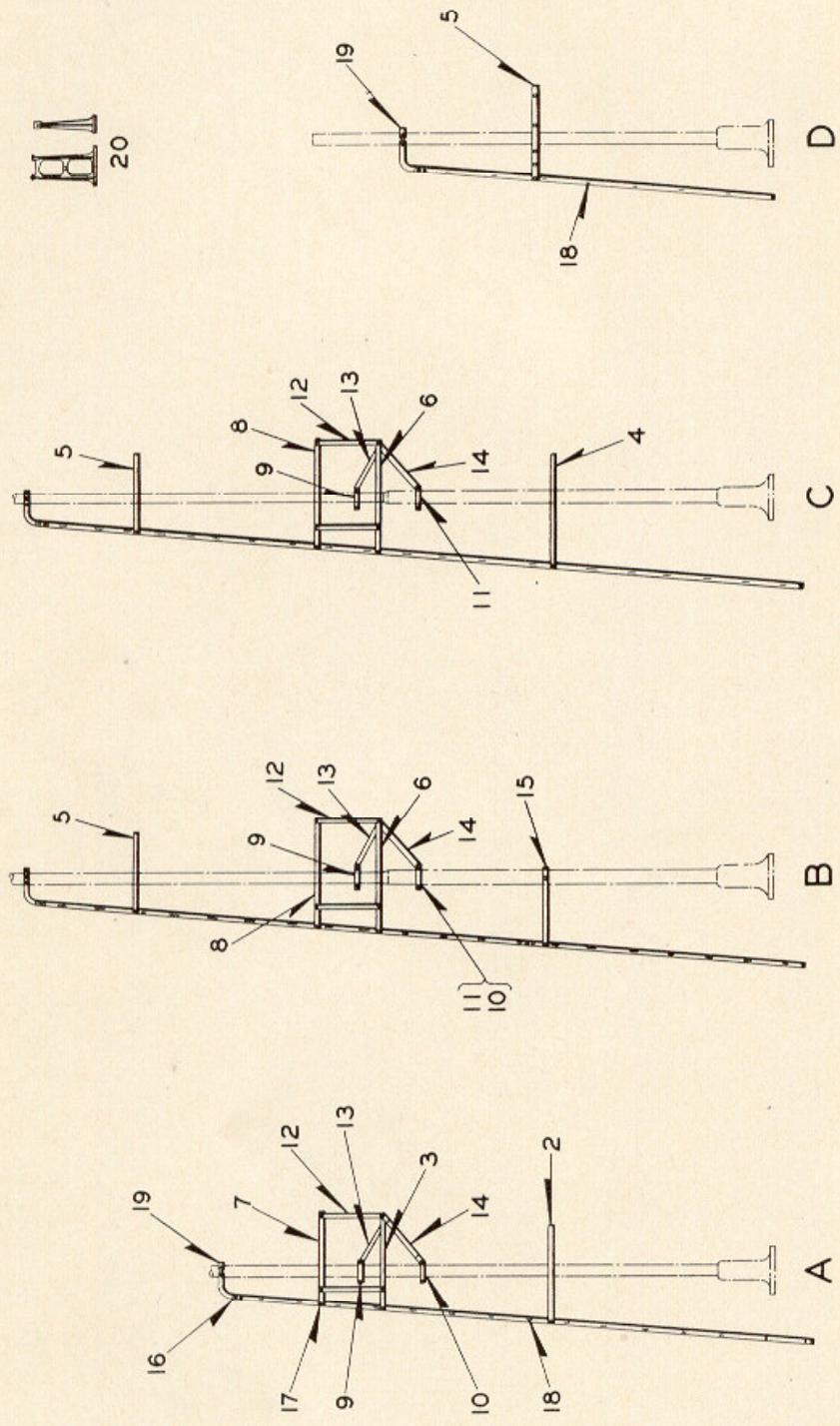


UNION SWITCH & SIGNAL CO.

ZCG UTILITY SCRAP
UNION MO 63084



STYLE "G" COLOR POSITION LIGHT SIGNAL
DETAIL PARTS
LADDERS AND DETAILS

UNION SWITCH & SIGNAL CO.

STYLE "G" COLOR POSITION LIGHT SIGNAL

DETAIL PARTS

LADDERS AND DETAILS

Order by Plate, Piece, Reference and Abbreviated Description Given in Heavy Face Type Only

Piece	Ref.	Description	Drawing Reference
153589	A	Ladder, 19'-4" Long with Platforms and Handrail for 5" Pipe for Ref. A of Plate B-2905 (One Unit Style "G" Color Position Light Signal with Marker).....	B-10313-448
153591	B	Ladder, 25'-6" Long with Platforms, Handrail and Stay for 5" and 6" Pipe for Ref. B of Plate B-2905 (One Unit Style "G" Color Position Light Signal with Marker).....	B-10313-445
153277	Ba	Ladder, 25'-6" Long with Platforms, Handrail and Stay for 5" Pipe for Refs. D, Da, E and Ea of Plate B-2905 (One Unit Style "G" Color Position Light Signal with Marker).....	B-10313-445
153641	C	Ladder, 25'-6" Long with Platforms and Handrail for 5" and 6" Pipe for Ref. C of Plate B-2905 (One Unit Style "G" Color Position Light Signal with Markers)	B-10313-450
153713	D	Ladder, 11'-0" Long with Platform for 5" Pipe for Ref. F of Plate B-2905 (One Unit Style "G" Color Position Light Bridge Signal with Marker).....	B-10313-336
113002	2	Ladder Platform Complete for 5" Pipe (20 ³ / ₄ " Centers) for Ref. A.....	B-7501-68
153580	3	Ladder Platform Complete for 5" Pipe (15 ¹ / ₄ " Centers) for Ref. A.....	B-7501-125
124081	4	Ladder Platform Complete for 6" Pipe (2'-3 ¹ / ₄ " Centers) for Ref. C.....	B-7501-79
112998	5	Ladder Platform Complete for 5" Pipe (13 ⁵ / ₈ " Centers) for Refs. B, Ba, C and D.....	B-7501-67
153276	6	Ladder Platform Complete for 5" Pipe (21 ¹ / ₂ " Centers) for Refs. B, Ba and C.....	B-7501-123
153586	7	Handrail complete for Ref. A.....	B-7501-124
153283	8	Handrail complete for Refs. B, Ba and C.....	B-7501-124

UNION SWITCH & SIGNAL CO.

STYLE "G" COLOR POSITION LIGHT SIGNAL

(Continued)

**ZCG UTILITY SCRAP
UNION MO 63084**

DETAIL PARTS

LADDERS AND DETAILS

Order by Plate, Piece, Reference and Abbreviated Description Given in Heavy Face Type Only

Piece	Ref.	Description	Drawing Reference
152688	9	Upper Brace Clamp complete for 5" Pipe for Refs. A, B, Ba and C.....	B-7501-121
152839	10	Lower Brace Clamp complete for 5" Pipe for Refs. A and Ba.....	B-7501-120
153053	11	Lower Brace Clamp complete for 6" Pipe for Refs. B and C.....	B-7501-121
152649	12	Handrail Brace.....	B-7501-121
152650	13	Platform Brace.....	B-7501-121
152838	14	Platform Brace.....	B-7501-120
153683	15	Ladder Stay complete for 6" Pipe, 2'-3" Centers for Ref. B.....	B-7501-66
153267	15a	Ladder Stay complete for 5" Pipe, 2'-3" Centers for Ref. Ba.....	B-7501-66
	16	Bolt, 1/2"x1" Sq. Hd. with 1/2" Hex. Nut.	
	17	Bolt, 1/2"x1 1/4" Sq. Hd. with 1/2" Hex. Nut.	
139	18	Rung.....	B-8365-1
68652	19	Top Stay Complete for 5" Pipe.....	B-7501-8
62563	20	Ladder Foundation Pier with two 1/2"x1 1/4" Sq. Hd. Bolts and Hex. Nuts.....	B-8848-10