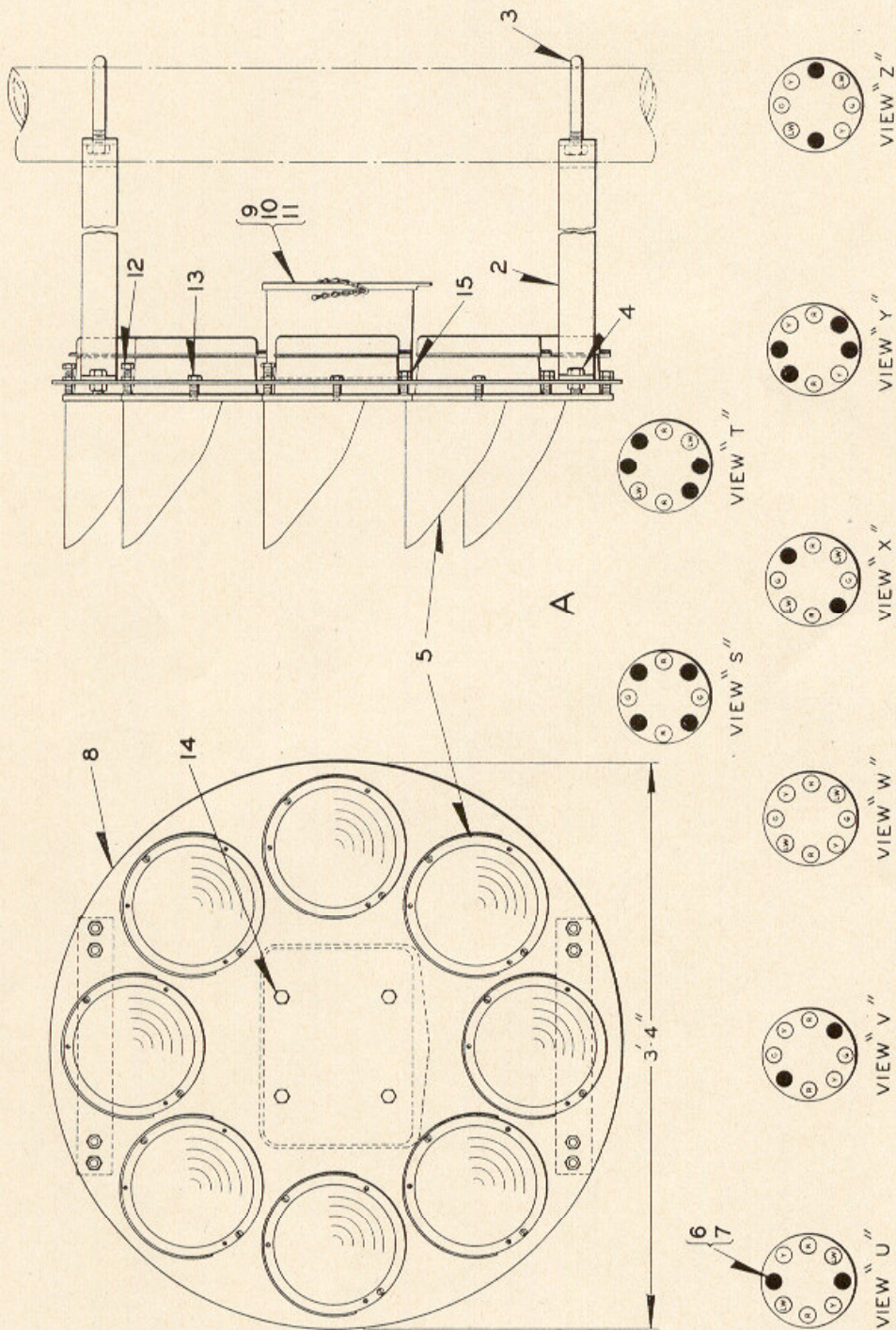


UNION SWITCH & SIGNAL CO.

ZCG UTILITY SCRAP
UNION MO 63084



STYLE "G" COLOR POSITION LIGHT SIGNALS
DETAIL PARTS
SIGNAL UNITS

UNION SWITCH & SIGNAL CO.

**STYLE "G" COLOR POSITION LIGHT SIGNALS
DETAIL PARTS
SIGNAL UNITS**

All signal units are equipped at the factory with lamp receptacles Ref. 25, Plate B-2930.

Orders must specify reference for lamp (see Refs. 28 and 29, Plate B-2930) also adapter if required (see Refs. 26 and 26a, Plate B-2930). Orders must specify street ell Ref. 11 and nipple Ref. 12, Plate B-2945 when required.

If signals are required according to A. A. R. Specification 162-35 (Electric Color Position Light Signals), Adjustable Adapter Ref. 26, and lamp Ref. 28, Plate B-2930 will be furnished.

Order by Plate, Piece, Reference and Abbreviated Description Given in Heavy Face Type Only

Style "G" Color Position Light Signal Unit, complete with Brackets and "U" Bolts for attaching to 5" Pipe Post, Dwg. C-9330, sh. 2.

Piece	Ref.	Indication	Per View	Terminal Box Plate B-2935	Remarks
168620	A	2-Pos. 0°-45° U.Q.	"Y"	Ref. C	Yellow and Red Lenses
168625	Aa	2-Pos. 0°-45° U.Q.	"Y"	Ref. B	Yellow and Red Lenses
168611	Ab	3-Pos. 0°-45° U.Q. and 45° L.Q.	"U"	Ref. B	Lunar White, Yellow and Red Lenses
168612	Ac	3-Pos. 0°-45°-90° U.Q.	"V"	Ref. B	Green, Yellow and Red Lenses
168615	Ad	3-Pos. 0°-45°-90° U.Q.	"V"	Ref. Aa (With Transformers)	Green, Yellow and Red Lenses
168616	Ae	3-Pos. 0°-45°-90° U.Q.	"V"	Ref. C	Green, Yellow and Red Lenses
168618	Af	3-Pos. 0°-45° U.Q. and 45° L.Q.	"U"	Ref. C	Lunar White, Yellow and Red Lenses
168619	Ag	3-Pos. 0°-45°-90° L.Q.	"X"	Ref. C	Lunar White, Green and Red Lenses
168621	Ah	3-Pos. 45°-90° U.Q. and 45° L.Q.	"Z"	Ref. Ac (With Transformers)	Lunar White, Green and Yellow Lenses
168622	Aj	3-Pos. 0°-45°-90° L.Q.	"X"	Ref. Ab (With Transformers)	Lunar White, Green and Red Lenses
168623	*Ak	3-Pos. 0°-45°-90° U.Q.	"V"	Ref. C	Green, Yellow and Red Lenses

*NOTE: Outer Lens has 30° spread

STYLE "G" COLOR POSITION LIGHT SIGNALS

(Continued)

DETAIL PARTS

SIGNAL UNITS

Order by Plate, Piece, Reference and Abbreviated Description Given in Heavy Face Type Only

Style "G" Color Position Light Signal Unit, complete with Brackets and "U" Bolts for attaching to 5" Pipe Post, Dwg. C-9330, sh. 2.

Piece	Ref.	Indication	Per View	Terminal Box Plate B-2935	Remarks
168613	Am	4-Pos. 0°-45°-90° U.Q. and 45° L.Q.	"W"	Ref. A (With Transformers)	Lunar White, Green, Yellow and Red Lenses
168614	An	4-Pos. 0°-45°-90° U.Q. and 45° L.Q.	"W"	Ref. B	Lunar White, Green, Yellow and Red Lenses
168617	Ap	4-Pos. 0°-45°-90° U.Q. and 45° L.Q.	"W"	Ref. C	Lunar White, Green, Yellow and Red Lenses
168624	*Aq	4-Pos. 0°-45°-90° U.Q. and 45° L.Q.	"W"	Ref. C	Lunar White, Green, Yellow and Red Lenses
171972	Ar	2-Pos. 0°-45° L.Q.	"T"	Ref. B	Lunar White and Red Lenses
172047	As	2-Pos. 0°-90°	"S"	Ref. B	Green and Red Lenses
175837	*At	4-Pos. 0°-45°-90° U.Q. and 45° L.Q.	"W"	Ref. B	Lunar White, Green, Yellow and Red Lenses
176409	Au	2-Pos. 0°-45° U.Q.	"Y"	Ref. Ad (With Transformers)	Yellow and Red Lenses
177387	*Av	3-Pos. 0°-45°-90° L.Q.	"X"	Ref. B	Lunar White, Green and Red Lenses

*NOTE: Outer Lens has 30° spread

STYLE "G" COLOR POSITION LIGHT SIGNALS

(Continued)

DETAIL PARTS

SIGNAL UNITS

Order by Plate, Piece, Reference and Abbreviated Description Given in
Heavy Face Type Only

Piece	Ref.	Description	Drawing Reference
410673	2	Bracket for 5" Pipe.....	410673
43128	3	3/4" "U" Bolt with Hex. Nuts for 5" Pipe.....	8782-63
	4	Bolt 1/2"x1 1/4" Hex. Hd. with 1/2" Hex. Nut for attaching Bracket to Signal Unit.	
	5	Style "G" Color Position Light Signal Lamp Unit (When ordering refer to Plate B-2930).....	C-9332-1
410675	6	Blind Hole Cover.....	410675
	7	Cap Screw 3/8"x1/2" Hex. Hd. for attaching Cover Ref. 6 to Unit.	
167673	8	Background, 3'-4" Diameter.....	C-9331-1
	9	Terminal Box, complete (With Transformers) (When ordering refer to Plate B-2935).....	C-7540-17
169343	10	Terminal Box, complete with Terminal Board and four A.A.R. Terminals (For details refer to Plate B-2935).....	C-7540-18
167944	11	Transformer and Terminal Box Only (For details refer to Plate B-2935).....	C-7540-17
410671	12	Special Bolt 3/8"x2" with Hex. Nut Ref. 15a for Top of Unit.....	410671-
169496	13	Bolt 3/8"x1 5/8".....	8709-58
	14	Tap Bolt 1/2"-13x1" Hex. Hd. with 1/2" Plain Lock Washer (3/16"x3/32") for attaching Terminal box to Background.	
410670	15	Special Bolt, 3/8"x1 1/4" with Hex. Nut Ref. 15a for bottom of unit.....	410670-
534	15a	Hex. Nut for Refs. 12 and 15.....	8109-29