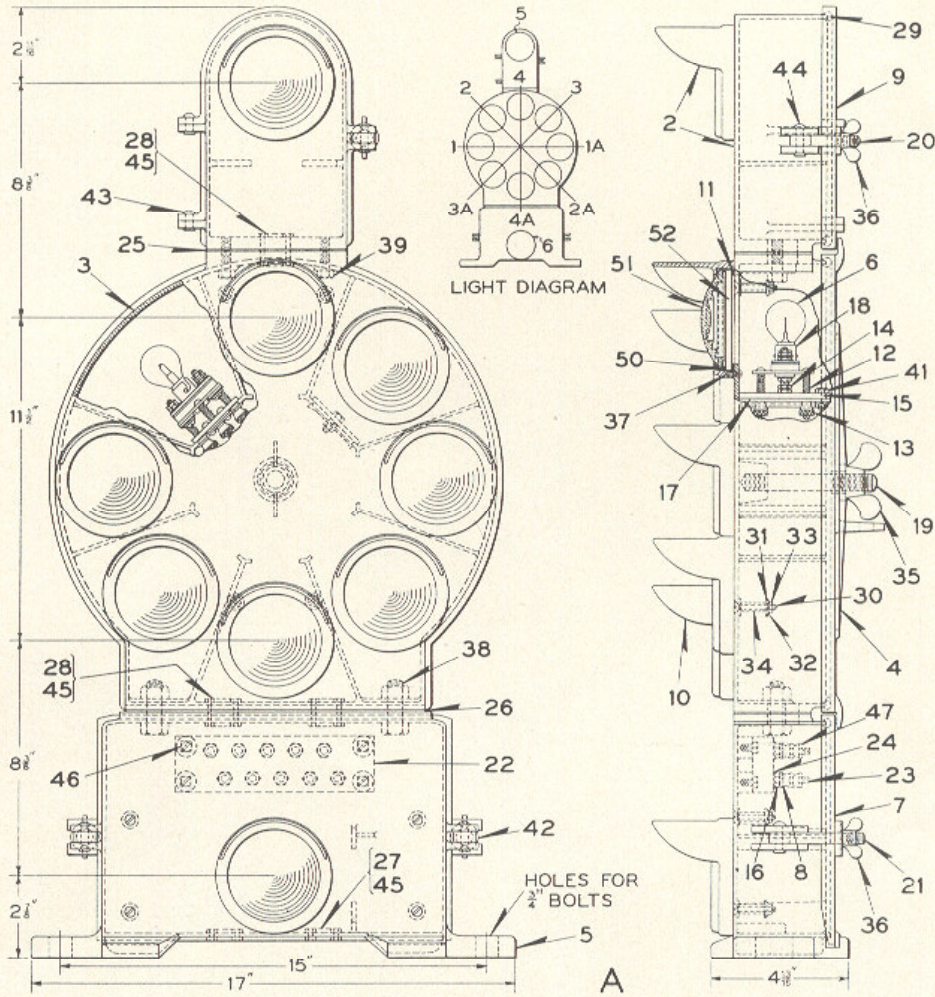


UNION SWITCH & SIGNAL CO.



STYLE "G" COLOR POSITION LIGHT  
DWARF SIGNALS

UNION SWITCH & SIGNAL CO.

STYLE "G" COLOR POSITION LIGHT  
DWARF SIGNALS

Unless otherwise specified all signals will be furnished with  
13.5-Volt 17-Watt S-11 type lamp Ref. 6

Order by Plate, Piece, Reference and Abbreviated Description Given in  
Heavy Face Type Only

Style "G" D.C. Color Position Light Dwarf Signal Complete, Dwg. C-9125, Sh. 2								
Piece	Ref.	Color Description						Indication
		Space 1-1A	Space 2-2A	Space 3-3A	Space 4-4A	Space 5	Space 6	
173910	A	Red		Yellow		Without	Clear, Sand Blasted on Front	2-Pos. 0°-45° U. Q.
173911	Aa	Red		Yellow		Clear, Sand Blasted on Front	Without	2-Pos. 0°-45° U. Q.
176286	Ab	Red		Yellow		Clear, Sand Blasted on Front	Clear, Sand Blasted on Front	2-Pos. 0°-45° U. Q.
176287	Ac	Red	Lunar White	Yellow		Without	Clear, Sand Blasted on Front	3-Pos. 0°-45° U. Q. and 45° L. Q.
177386	Ad	Red	Lunar White			Without	Without	2-Pos. 0°-45° L. Q.
183140	Ae	Red	Lunar White			Clear, Sand Blasted on Front	Without	2-Pos. 0°-45° L. Q.
183141	Af	Red		Yellow	Green	Clear, Sand Blasted on Front	Without	3-Pos. 0°-45° and 90° U. Q.
183142	Ag	Red	Lunar White	Yellow	Green	Without	Clear, Sand Blasted on Front	4-Pos. 0°-45° and 90° U. Q. and 45° L. Q.

UNION SWITCH & SIGNAL CO.

STYLE "G" COLOR POSITION LIGHT  
DWARF SIGNALS

(Continued)

Order by Plate, Piece, Reference and Abbreviated Description Given in  
Heavy Face Type Only

Style "G" D.C. Color Position Light Dwarf Signal Complete, Dwg. C-9125, Sh. 2								
Piece	Ref.	Color Description						Indication
		Space 1-1A	Space 2-2A	Space 3-3A	Space 4-4A	Space 5	Space 6	
188120	Ah	Red	Lunar White	Yellow	Green	Without	Without	4-Pos. 0°-45° and 90° U.Q. and 45° L.Q.
189083	Aj	Red	Lunar White	Yellow	Green	Clear, Sand Blasted on Front	Clear, Sand Blasted on Front	4-Pos. 0°-45° and 90° U.Q. and 45° L.Q.
189281	Ak	Red	Lunar White	Yellow		Without	Without	3-Pos. 0°-45° U.Q. and 45° L.Q.
191789	Am	Red	Lunar White	Yellow		Clear, Sand Blasted on Front	Without	3-Pos. 0°-45° U.Q. and 45° L.Q.
Piece	Ref.	Description						Drawing Reference
181073	2	Material Necessary for adding <b>Top Marker Light</b> to existing Color Position Light Dwarf Signals (Inc. 1-2a, 1-9, 1-10, 1-11, 3-12, 3-13, 2-14, 1-15, 1-17, 1-18, 1-20, 1-25, 1-28, 1-36, 6-37, 2-39, 1-41, 1-42, 2-43, 1-44, 2-45, 1-52d, 1-50 and 1-51).....						D-2351-3
173872	2a	<b>Top Casting Only</b> .....						C-9124-11
173827	3	<b>Frame for Refs. A to Am</b> .....						C-9124-9
	4	<b>Cover with 1/4" Rd. Braided Torch Wicking Gasket for Refs. A to Am</b> .....						C-9124-12
173867	5	<b>Base Casting, for Refs. A to Am</b> .....						C-9124-10

UNION SWITCH & SIGNAL CO.

STYLE "G" COLOR POSITION LIGHT  
DWARF SIGNALS

(Continued)

Order by Plate, Piece, Reference and Abbreviated Description Given in  
Heavy Face Type Only

Piece	Ref.	Description	Drawing Reference
135722	6	Lamp, $\frac{1}{64}$ " Precision S-11 Single Contact 13.5-Volts, 17-Watts. (Pins in base 90° from plane of filament).	B-12409-18
	7	Cover Complete with $\frac{1}{4}$ " Rd. Braided Torch Wicking Gasket for Refs. A to Am.....	C-9124-12
29102	8	Washer.....	7828-139
	9	Top Casting Door with $\frac{1}{4}$ " Rd. Braided Torch Wicking Gasket.....	C-9124-11
173875	10	Hood.....	C-9124-11
174163	11	Gasket.....	8078-437
175905	12	Spring.....	8124-244
4421	13	Nut (Knurled).....	8109-82
410169	14	Hex. Nut.....	410169
174692	15	Lamp Socket Support Complete (For all indications except 90°).....	C-9124-10
174693	15a	Lamp Socket Support Complete (For 90° Indication) ..	C-9124-10
29103	16	Hex. Nut.....	8109-194
174614	17	Spring Clamp.....	8735-746
174451	18	Lamp Socket Complete.....	12415-31
173891	19	Stud.....	8071-162
174396	20	Eye Bolt.....	8034-98
173943	21	Eye Bolt.....	8034-98
173941	22	Terminal Board Complete (Inc. 1-22a and 10-23).....	9968-1054

UNION SWITCH & SIGNAL CO.

STYLE "G" COLOR POSITION LIGHT  
DWARF SIGNALS

(Continued)

Order by Plate, Piece, Reference and Abbreviated Description Given in  
Heavy Face Type Only

Piece	Ref.	Description	Drawing Reference
173942	22a	Terminal Board Only, for Ref. 22.....	9968-1053
	23	Terminal Post with Nuts and Washers. (Inc. 1-23a, 1-24, 2-47, 2-8 and 1-16).....	12451-
115706	23a	Terminal Post Only, for Ref. 23.....	8094-1192
29104	24	Washer.....	7828-138
174408	25	Top Gasket.....	8078-1517
174409	26	Bottom Gasket.....	8078-1518
174338	27	Bushing.....	8095-669
174339	28	Bushing.....	8095-669
	29	1/4" Round Braided Torch Wicking (Specify length required).	
	30	Machine Screw No. 8-32x1 1/2" Flat Hd. S. (Cad. Pl.) with Washer Ref. 31, Washer Ref. 32, Hex. Nut Ref. 33 and Bushing Ref. 34.....	12471-
	30a	Machine Screw No. 8-32x1 1/2" Flat Hd. S. (Cad. Pl.) for Ref. 30.	
173909	31	Washer for Ref. 30.....	8078-344
73493	32	Washer for Ref. 30.....	7826-78
122731	33	Hex. Nut for Ref. 30.....	8109-192
173897	34	Bushing for Ref. 30.....	8095-13
	35	5/8" Wing Nut (Cad. Pl.)	
	36	3/8" Wing Nut (Cad. Pl.)	
	37	Machine Screw No. 8-32x3/8" Rd. Hd. S. (Cad. Pl.)	

UNION SWITCH & SIGNAL CO.

STYLE "G" COLOR POSITION LIGHT  
DWARF SIGNALS

(Continued)

Order by Plate, Piece, Reference and Abbreviated Description Given in  
Heavy Face Type Only

Piece	Ref.	Description	Drawing Reference
	38	Bolt $\frac{1}{2}$ "x $1\frac{1}{2}$ " Hex. Hd. S. (Cad. Pl.) with $\frac{1}{2}$ " Hex. Nut (Cad. Pl.)	
	39	Tap Bolt $\frac{5}{16}$ "-18x $1\frac{1}{4}$ " Hex. Hd. S. (Cad. Pl.)	
	40	Tap Bolt $\frac{5}{16}$ "-18x1" Hex. Hd. S. (Cad. Pl.) (Not shown) for fastening Cap Ref. 48 when Top Marker is not used.	
	41	Tap Bolt $\frac{1}{4}$ "-20x $\frac{5}{8}$ " Hex. Hd. S. (Cad. Pl.) with $\frac{1}{4}$ " Hex. Nut (Cad. Pl.) and $\frac{1}{4}$ " Plain S. Lock Washer ( $\frac{1}{16}$ "x $\frac{1}{16}$ " (Cad. Pl.)	
	42	$\frac{3}{8}$ " S. Plate Washer (Cad. Pl.)	
	43	Rivet $\frac{1}{4}$ "x $\frac{5}{8}$ " Rd. Hd. Copper.	
	44	Rivet $\frac{1}{4}$ "x1" Rd. Hd. Copper.	
	45	$\frac{3}{4}$ " Conduit Lock Nut.	
	46	Machine Screw No. 10-24x $\frac{3}{4}$ " Fil. Hd. S. (Cad. Pl.).	
29101	47	Hex. Nut.....	8109-193
173874	48	Cap (Not shown) (Used when Top Marker is not required).....	C-9124-11
174372	49	Blind Cover (Not shown) with Three Screws Ref. 37, used when Bottom Marker, 0°, 45° or 90° Indication is not required.....	C-9124-11
149564	50	Gasket.....	8078-437
135274	51	$3\frac{1}{2}$ " Diam. Clear Lens.....	B-8276-32
141359	52	$3\frac{1}{2}$ " Diam. 20° Flat Spreader Red Roundel.....	8468-52
141360	52a	$3\frac{1}{2}$ " Diam. 20° Flat Spreader Yellow Roundel.....	8468-52
141363	52b	$3\frac{1}{2}$ " Diam. 20° Flat Spreader Lunar White Roundel..	8468-52

UNION SWITCH & SIGNAL CO.

STYLE "G" COLOR POSITION LIGHT  
DWARF SIGNALS

(Continued)

Order by Plate, Piece, Reference and Abbreviated Description Given in  
Heavy Face Type Only

Piece	Ref.	Description	Drawing Reference
141361	52c	3½" Diam. 20° Flat Spreader Green Roundel.....	8468-52
141364	52d	3½" Diam. 20° Flat Spreader Clear (Sand Blasted on front side only) Roundel.....	8468-52
141362	52e	3½" Diam. 20° Flat Spreader Clear Roundel.....	8468-52
182592	52f	3½" Diam. 20° Flat Spreader Purple Roundel.....	8468-52