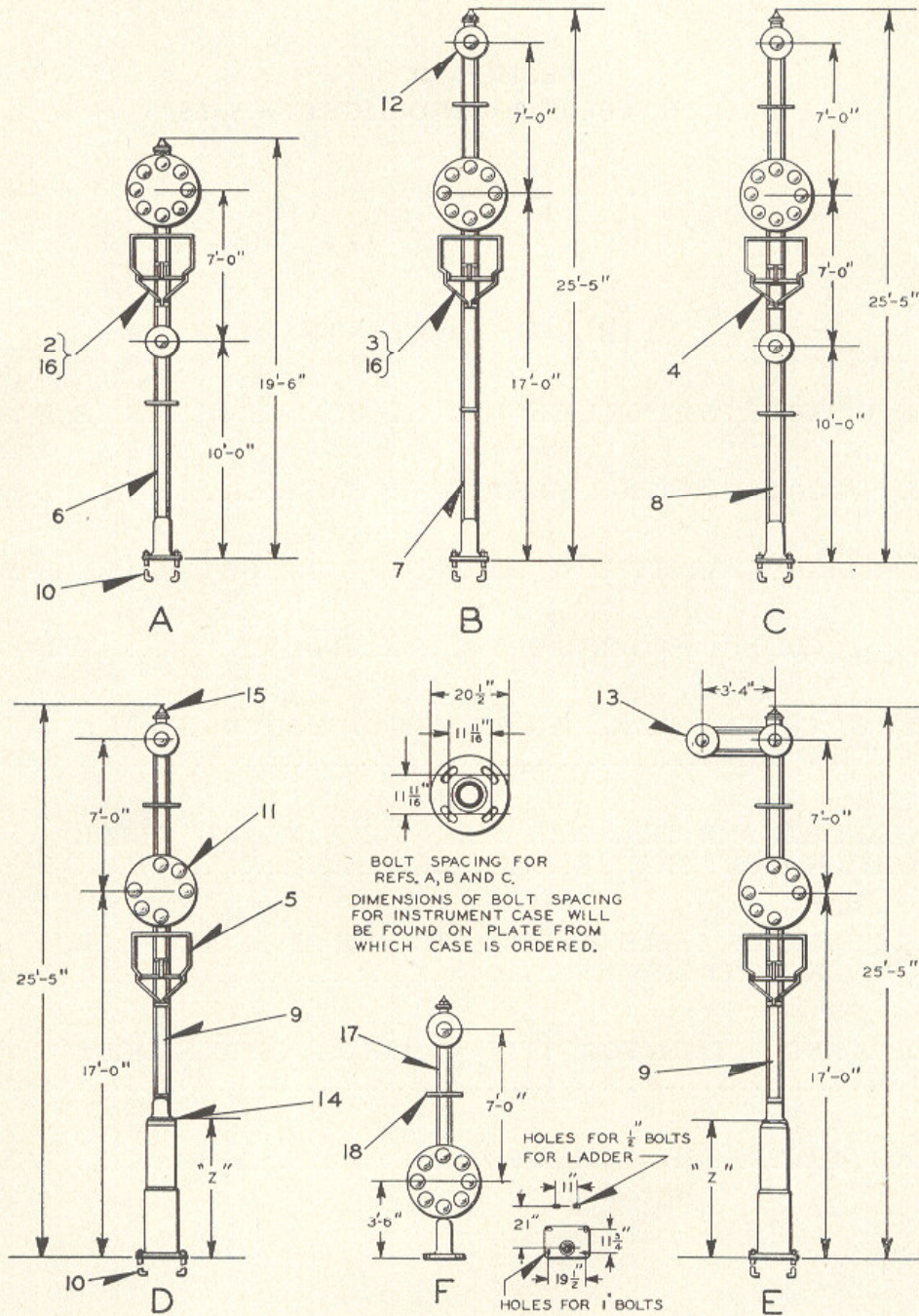


UNION SWITCH & SIGNAL CO.



STYLE "G" COLOR POSITION LIGHT GROUND AND BRIDGE SIGNALS

UNION SWITCH & SIGNAL CO.

STYLE "G" COLOR POSITION LIGHT GROUND AND BRIDGE SIGNALS

If signals of different dimensions than those shown are desired, orders should so state.

All signal units are equipped at the factory with lamp receptacles Ref. 25, Plate B-2930.

Orders must specify reference for lamp (See Refs. 28 and 29, Plate B-2930), also adapter if required (See Refs. 26 and 26a, Plate B-2930). Orders must specify street ell Ref. 11 and nipple Ref. 12, Plate B-2945 when required.

If signals are required according to A. A. R. specification 162-35 (Electric Color Position Light Signals), Adjustable Adapter Ref. 26, and lamp Ref. 28, Plate B-2930 will be furnished.

Order by Plate, Piece, Reference and Abbreviated Description Given in Heavy Face Type Only

Piece	Ref.	Description	Drawing Reference
	A	One Arm and Marker Style "G" Color Position Light Ground Signal with Ladder, 5" Pipe Post, Pinnacle and Foundation Bolts as shown. (Orders should specify Units required by referring to Refs. A to Av of Plate B-2920 for Signal Unit and Refs. A to Ae of Plate B-2915 for Marker Unit).....	C-9235-2
	B	One Arm and Marker Style "G" Color Position Light Ground Signal with Ladder, 5" and 6" Pipe Post, Pinnacle and Foundation Bolts as shown. (Orders should specify Units required by referring to Refs. A to Av of Plate B-2920 for Signal Unit and Refs. A to Ae of Plate B-2915 for Marker Unit).....	C-9235-2
	C	One Arm and Two Markers Style "G" Color Position Light Ground Signal with Ladder, 5" and 6" Pipe Post, Pinnacle and Foundation Bolts as shown. (Orders should specify Units required by referring to Refs. A to Av of Plate B-2920 for Signal Unit, Refs. A to Ae of Plate B-2915 for Marker Unit for 5" Pipe Post and Refs. Af to Am of Plate B-2915 for Marker Unit for 6" Pipe Post).....	C-9235-2
	D	One Arm and Marker Style "G" Color Position Light Ground Signal with double Instrument Case ("Z" dim. 6'-4 $\frac{1}{4}$ "), Ladder, 5" Pipe Post, Pinnacle and Foundation Bolts as shown. (Orders should specify Units required by referring to Refs. A to Av of Plate B-2920 for Signal Unit, Refs. A to Ae of Plate B-2915 for Marker Unit and to Section "L" Catalog for Instrument Case).....	C-9235-2
	Da	One Arm and Marker Style "G" Color Position Light Ground Signal with single Instrument Case ("Z" dim. 3'-4 $\frac{1}{4}$ "), Ladder, 5" and 6" Pipe Post, Pinnacle and Foundation Bolts. (Orders should specify Units required by referring to Refs. A to Av of Plate B-2920 for Signal Unit, Refs. A to Ae of Plate B-2915 for Marker Unit and to Section "L" Catalog for Instrument Case).....	C-9235-

UNION SWITCH & SIGNAL CO.

STYLE "G" COLOR POSITION LIGHT GROUND AND BRIDGE SIGNALS

(Continued)

Order by Plate, Piece, Reference and Abbreviated Description Given in Heavy Face Type Only

Piece	Ref.	Description	Drawing Reference
	E	One Arm and Double Marker Style "G" Color Position Light Ground Signal with double Instrument Case ("Z" dim. 6'-4 $\frac{1}{4}$ "), 5" Pipe Post, Pinnacle and Foundation Bolts as shown. (Orders should specify Units required by referring to Refs. A to Av of Plate B-2920 for Signal Units, Refs. B to Be of Plate B-2915 for Marker Unit and to Section "L" Catalog for Instrument Case).....	C-9235-2
	Ea	One Arm and Double Marker Style "G" Color Position Light Ground Signal with single Instrument Case ("Z" dim. 3'-4 $\frac{1}{4}$ "), Ladder, 5" and 6" Pipe Post, Pinnacle and Foundation Bolts. (Orders should specify Units required by referring to Refs. A to Av of Plate B-2920 for Signal Unit, Refs. B to Be of Plate B-2915 for Marker Unit and to Section "L" Catalog for Instrument Case).....	C-9235-
	F	One Arm and Marker Style "G" Color Position Light Bridge Signal with Ladder, 5" Pipe Post and Pinnacle as shown. (Orders should specify Units required by referring to Refs. A to Av of Plate B-2920 for Signal Unit and Refs. A to Ae of Plate B-2915 for Marker Unit) (Mounting Bolts for Post and Ladder not included).....	C-9235-4
153589	2	Ladder with two Platforms, Handrails and Stays as shown for Ref. A (For details refer to Ref. A, Plate B-2950).....	B-10313-448
153591	3	Ladder with two Platforms, Handrails and Stays as shown for Ref. B (For details refer to Ref. B, Plate B-2950).....	B-10313-445
153641	4	Ladder with three Platforms, Handrails and Stays as shown for Ref. C. (For details refer to Ref. C, Plate B-2950).....	B-10313-450
153277	5	Ladder with two Platforms, Handrails and Stays as shown for Refs. D, Da, E and Ea. (For details refer to Ref. Ba, Plate B-2950).....	B-10313-445

UNION SWITCH & SIGNAL CO.

STYLE "G" COLOR POSITION LIGHT GROUND AND BRIDGE SIGNALS
(Continued)

Order by Plate, Piece, Reference and Abbreviated Description Given in Heavy Face Type Only

Piece	Ref.	Description	Drawing Reference
153575	6	Post, 5" Pipe with Base (drilled for Wire Outlets) for Ref. A.....	B-9893-118
153516	7	Post, 5" and 6" Pipe with Base (drilled for Wire Outlets) for Ref. B.....	B-9893-185
153590	8	Post, 5" and 6" Pipe with Base (drilled for Wire Outlets) for Ref. C.....	B-9893-134
153305	9	Post, 5" Pipe with Base (drilled for Wire Outlets) for Refs. D and E.....	B-9893-259
	9a	Post, 5" and 6" Pipe with Base (drilled for Wire Outlets for Refs. Da and Ea.....	B-9893-
10276	10	Foundation Bolt, 1"x3'-0" with 1" Hex. Nut and 1" Std. Plate Washer.....	7913-54
	11	Style "G" Color Position Light Signal Unit. (When ordering refer to Plate B-2920).....	C-9330-2
	12	Single Marker Light Unit. (When ordering refer to Plate B-2915).....	C-9330-3
	13	Double Marker Light Unit. (When ordering refer to Plate B-2915).....	C-9330-4
	14	Double Instrument Case, 6'-4 $\frac{1}{4}$ " high. (When ordering refer to Section "L" Catalog).....	C-7589-
	14a	Single Instrument Case, 3'-4 $\frac{1}{4}$ " high. (When ordering refer to Section "L" Catalog).....	C-7589-
150818	15	Pinnacle complete. (For details refer to Plate B-2945)	B-8121-17
62563	16	Ladder Foundation Pier with two $\frac{1}{2}$ "x1 $\frac{1}{4}$ " Sq. Hd. Bolts and Hex. Nuts.....	B-8848-10
153710	17	Post, 5" Pipe with Base (drilled for Wire Outlets) for Ref. F.....	B-9893-247
153713	18	Ladder with one Platform as shown for Ref. F. (For details refer to Ref. D, Plate B-2950).....	B-10313-336