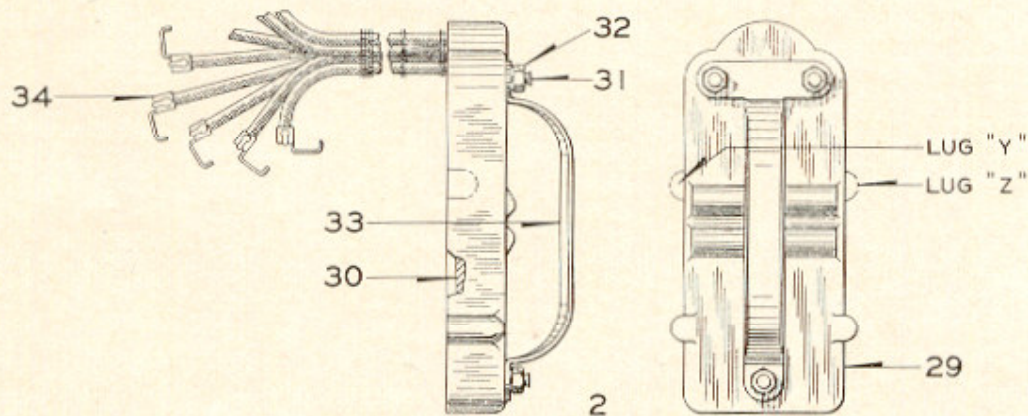
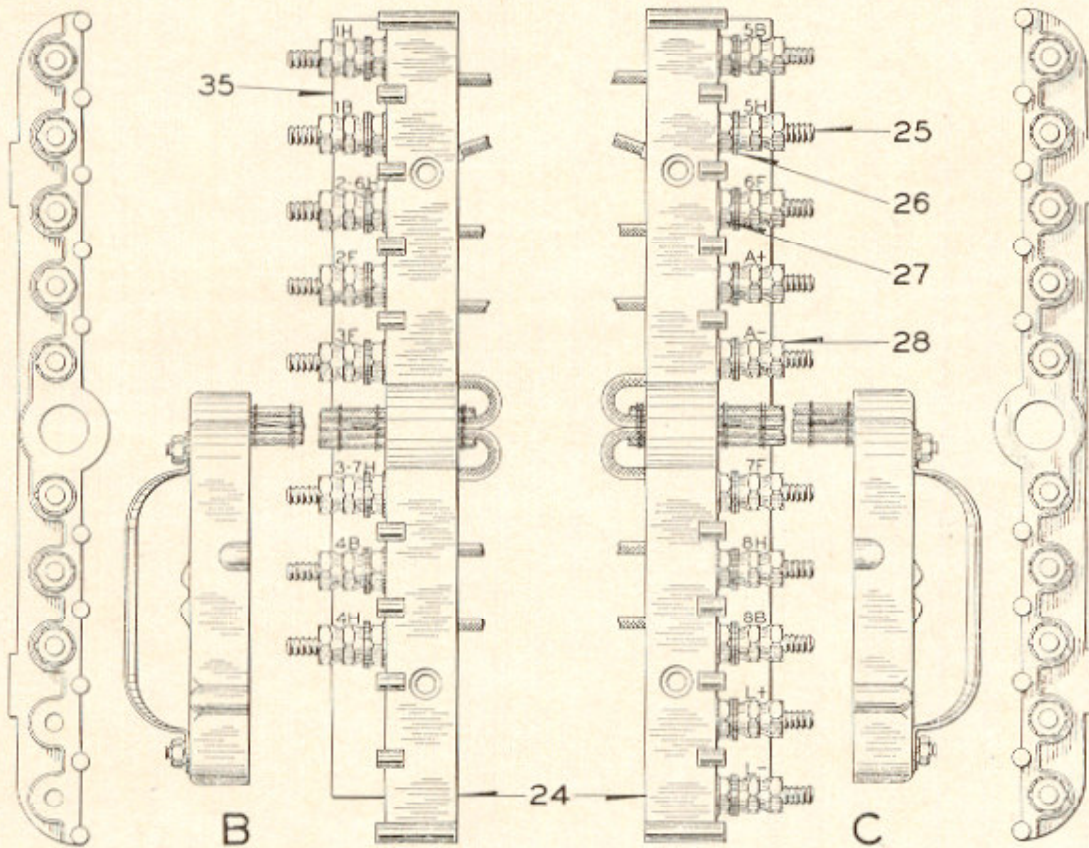
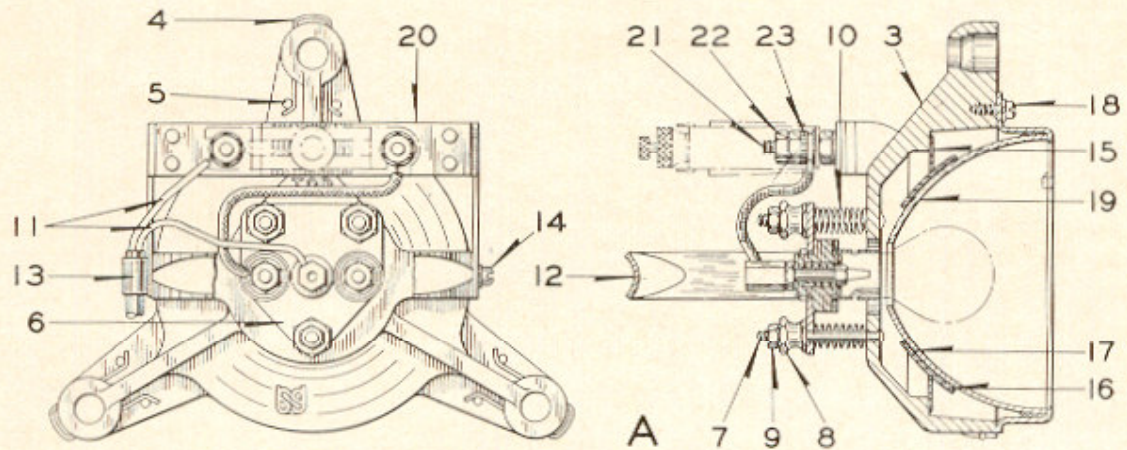


ZCG UTILITY SCRAP
UNION MO 63084



Reflector and Terminal Boards

Style "H-5" Three-Position Color Light Searchlight Signal

Detail Parts

Reflector and Terminal Boards

Detail parts are shown for reflector assembly but complete reflector assembly should be returned to factory for repairs involving new reflector or socket adjustment.

Order by Plate, Piece, Reference and Abbreviated
Description Given in Heavy Face Type Only

Piece	Ref.	Description	Drawing Reference
214525	A	Reflector with Socket and without Resistor. For Style "H-5" D.C. High and Dwarf Searchlight Signal.....	C-16671-5
	Aa	Reflector with Socket and Resistor (Orders should specify resistance desired) For Style "H-5" D.C. High and Dwarf Searchlight Signal.....	C-16671-5
103726	B	L.H. Plug Coupler and Terminal Board (Inc. 1-2, 1-24 and 8-25) (Does not include Terminal Marker Ref. 35).....	C-16671-7
104430	C	R.H. Plug Coupler and Terminal Board (Inc. 1-2a, 1-24 and 10-25) (Does not include Terminal Marker Ref. 35).....	C-16671-7
103725	2	L.H. Plug Coupler with Leads (With Lug "Y" and without Lug "Z").....	C-16671-7
104429	2a	R.H. Plug Coupler with Leads (With Lug "Z" and without Lug "Y").....	C-16671-7
102244	3	Reflector Bracket	C-16671-3
103727	4	Spring Clip	8124-266
	5	Screw, No. 4x$\frac{5}{16}$" Rd. Hd. Hardened (Tin Pl.)	
214307	6	Lamp Socket Complete	12415-12
149105	7	Stud	8114-361
103818	8	Nut	8109-495
1515	9	Nut	8109-23
149104	10	Spring	8124-218
104278	11	Lead Complete (2-Wires) for Ref. A.....	B-9990-50
103716	12	Handle	8311-115
104166	13	Wire Clamp	11893-855

**ZCG UTILITY SCRAP
UNION MO 63084**

Style "H-5" Three-Position Color Light

Searchlight Signal

ZCG UTILITY SCRAP

Detail Parts

UNION MO 63084

Reflector and Terminal Boards

(Continued)

Order by Plate, Piece, Reference and Abbreviated
Description Given in Heavy Face Type Only

Piece	Ref.	Description	Drawing Reference
	14	Machine Screw, No. 8-36x $\frac{1}{2}$ " Fil. Hd. Br. (N.P.) with No. 8 Pl. S. Lock Washer ($\frac{1}{16}$ "x $\frac{3}{64}$ " (Tin Pl.)	
151300	15	Washer	7828-346
158572	16	Gasket	8078-76
106871	17	Washer	8078-379
	18	Machine Screw, No. 8-36x $\frac{5}{16}$ " Fil. Hd. Br. (N.P.) with No. 8 Pl. S. Lock Washer ($\frac{1}{16}$ "x $\frac{3}{64}$ " (Tin Pl.)	
106568	19	Reflector Complete	C-16671-14
108121	20	Resistor Bracket with Terminal Posts	9065-288
	21	Terminal Post with Nuts and Washers (Inc. 1-21a, 3-22 and 3-23)	12451-
110803	21a	Terminal Post Only for Ref. 21	8094-1039
26545	22	Nut	8109-181
53	23	Washer	7828-5
104282	24	Terminal Board	9968-1238
	25	Terminal Post with Nuts and Washers (Inc. 1-25a, 3-26, 1-27 and 2-28)	12451-
130593	25a	Terminal Post Only for Ref. 25	8094-843
29102	26	Washer	7828-139
127260	27	Nut	8109-194
29101	28	Nut	8109-193
104301	29	L.H. Socket Housing for Ref. 2 (With Lug "Y" and without Lug "Z")	8750-2868
104028	29a	R.H. Socket Housing for Ref. 2a (With Lug "Z" and without Lug "Y")	8750-2868
103711	30	Socket Housing Cover	8750-2869

Style "H-5" Three-Position Color Light Searchlight Signal

Detail Parts

Reflector and Terminal Boards

(Continued)

Order by Plate, Piece, Reference and Abbreviated
Description Given in Heavy Face Type Only

Piece	Ref.	Description	Drawing Reference
	31	Machine Screw, No. 10-30x1 $\frac{1}{8}$ " Flat Hd. Br. (N.P.) with No. 10 Pl. S. Lock Washer ($\frac{1}{16}$ "x $\frac{3}{4}$ " (Tin Pl.) and Nut Ref. 32	
26942	32	Nut.....	8109-184
103728	33	Handle.....	8311-116
103820	34	Lead Complete (Black).....	B-9990-46
103821	34a	Lead Complete (White).....	B-9990-46
103822	34b	Lead Complete (Red).....	B-9990-46
103823	34c	Lead Complete (Blue).....	B-9990-46
103824	34d	Lead Complete (Green).....	B-9990-46
103825	34e	Lead Complete (Yellow).....	B-9990-46
103826	34f	Lead Complete (Brown).....	B-9990-46
103827	34g	Lead Complete (Orange).....	B-9990-46
104408	35	Terminal Marker (Numbered on two sides for use with R.H. or L.H. Terminal Board).....	8988-163

**ZCG UTILITY SCRAP
UNION MO 63084**