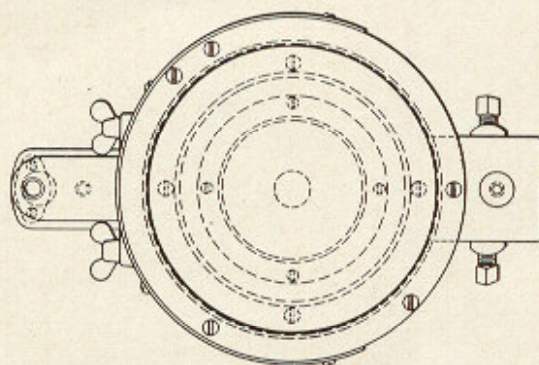
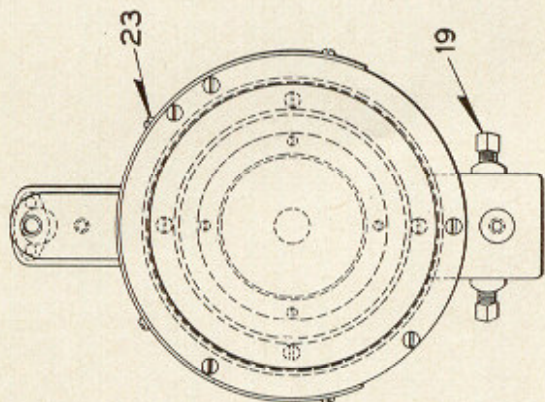


UNION SWITCH & SIGNAL CO.

ZCG UTILITY SCRAP  
UNION MO 63084

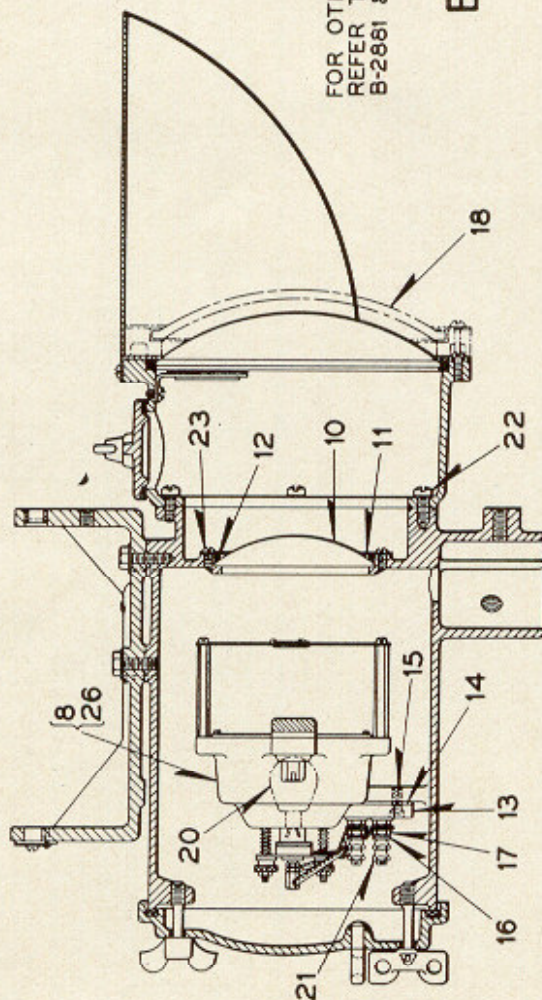
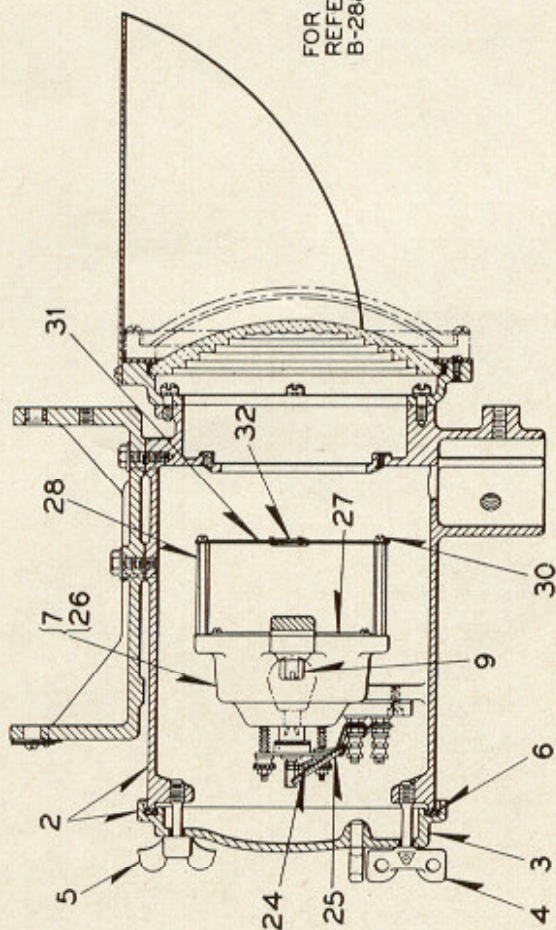


FOR OTHER DETAILS  
REFER TO PLATES  
B-2880 & B-2885

A

FOR OTHER DETAILS  
REFER TO PLATES  
B-2881 & B-2888

B



STYLE "H" AND "H-2" INOPERATIVE SIGNAL UNITS  
WITH 8 3/8" LENS

**UNION SWITCH & SIGNAL CO.**

**COLOR LIGHT SEARCHLIGHT SIGNAL  
DETAIL PARTS**

**STYLE "H" AND "H-2" INOPERATIVE SIGNAL UNITS  
WITH 8 $\frac{3}{8}$ " LENS**

These signal units to be used for fixed signals or markers where signal indications exactly the same as the operating signals are desired. Standard operating units cannot be used in these signals.

For complete assemblies of Inoperative Searchlight Signal Units refer to Plate B-2891.

**Order by Plate, Piece, Reference and Abbreviated Description Given in  
Heavy Face Type Only**

Piece	Ref.	Description	Drawing Reference
	A	Style "H" Inoperative Searchlight Signal Unit, with Red Roundel (without Lamp Ref. 20).....	C-9104-
182595	B	Style "H-2" Inoperative Searchlight Signal Unit, with Red Roundel (without Lamp Ref. 20).....	C-9104-10
	2	Case and Door Complete with Gasket and Wing Nuts	C-9105-20
182273	2a	Case only, for Ref. 2.....	C-9105-20
	3	Door Complete with Staple and Gasket Ref. 6.....	C-8964-34
132539	4	Wing Nut.....	8331-69
132541	5	Wing Nut.....	8331-70
124383	6	Gasket, for Ref. 3.....	8078-717
182659	7	Reflector and Lamp Socket Complete for Style "H" Signal (For other details refer to Plate B-2885)....	C-9105-23
182350	8	Reflector and Lamp Socket Complete for Style "H-2" Signal (For other details refer to Plates B-2885 and B-2888).....	C-9105-23
182477	9	Screw, for attaching Refs. 7 and 8 to Case.....	8190-234
169298	10	4 $\frac{1}{2}$ " Diam. Clear Inner Lens for Style "H-2" Signal.	B-8276-62
169544	11	Lens Ring.....	7436-141
	12	Cork Gasket, $\frac{5}{32}$ " Diam. x 14" Long.	
	13	Terminal Block Complete, with Terminal Posts, Nuts and Washers (Inc. 1-13a, 2-15, 4-21, 8-16 and 2-17)	411175
411175	13a	Terminal Block Complete, with Terminal Posts, Nuts and Washers for Ref. 13 (Inc. 1-13b, 2-13c, 2-17 and 2-16).....	411175

**UNION SWITCH & SIGNAL CO.**

**COLOR LIGHT SEARCHLIGHT SIGNAL  
(Continued)**

**DETAIL PARTS**

**STYLE "H" AND "H-2" INOPERATIVE SIGNAL UNITS  
WITH 8<sup>3</sup>/<sub>8</sub>" LENS**

**Order by Plate, Piece, Reference and Abbreviated Description Given in  
Heavy Face Type Only**

Piece	Ref.	Description	Drawing Reference
410289	13b	Terminal Block only.	
410594	13c	Terminal Post only.	
410539	14	Insulation, used under Ref. 13.....	410559
	15	Machine Screw, No. 10-30x <sup>5</sup> / <sub>8</sub> " Rd. Hd. Br. (N.P.) for fastening Ref. 13 to Case.	
29102	16	Washer.....	7828-139
29103	17	Nut.....	8109-194
90897	18	Deflecting Prism Cover Glass Complete (10° Spread one direction) used with 8 <sup>3</sup> / <sub>8</sub> " Lens.....	C-8901-8
90898	18a	Deflecting Prism Cover Glass Complete (20° Spread one direction) used with 8 <sup>3</sup> / <sub>8</sub> " Lens.....	C-8901-8
174897	18b	Spreadlite Prism Cover Glass Complete (8° Spread in each direction) used with 8 <sup>3</sup> / <sub>8</sub> " Lens.....	C-9105-12
170245	18c	Spreadlite Prism Cover Glass Complete (15° Spread in each direction) used with 8 <sup>3</sup> / <sub>8</sub> " Lens.....	C-9105-12
	19	Set Screw, 1/2"x1" Cup Point S.	
	20	Lamp, when ordering refer to Plate B-2885.....	B-12409-
29101	21	Nut.....	8109-193
	22	Machine Screw, <sup>5</sup> / <sub>16</sub> "-18x <sup>3</sup> / <sub>4</sub> " Fil. Hd. S. (Cad. Pl.) with <sup>5</sup> / <sub>16</sub> " Pl. S. Lock Washer ( <sup>3</sup> / <sub>2</sub> "x <sup>1</sup> / <sub>8</sub> " (Cad. Pl.).	
	23	Machine Screw, No. 10-30x <sup>1</sup> / <sub>4</sub> " Rd. Hd. S. (Cad. Pl.).	
145602	24	Lead Complete with two Eyelets, 11" long.....	B-9990-13
158974	25	Lead Complete with one connector and one Eyelet, 11" long.....	8064-678

# Color Light Searchlight Signal

(Continued)

## Detail Parts

### Style "H" and "H-2" Inoperative Signal Units with 8<sup>3</sup>/<sub>8</sub>" Lens

Order by Plate, Piece, Reference and Abbreviated  
Description Given in Heavy Face Type Only

Piece	Ref.	Description	Drawing Reference
182323	26	Case for Reflector.....	C-9105-21
149095	27	Ring.....	7436-146
182394	28	Stud.....	8114-835
169703	29	Gasket for Reflector (Not shown).....	8078-1502
	30	Machine Screw, No. 10-30x <sup>3</sup> / <sub>8</sub> " Fil. Hd. Br. (N.P.).	
182399	31	Roundel Support Complete with Red Roundel.....	11893-676
410431	32	Red Roundel only.....	410430
413675	32a	Yellow Roundel only.....	410430

Remove Staple Before Filing  
Plates in Loose Leaf Cover

**ZCG UTILITY SCRAP  
UNION MO 63084**