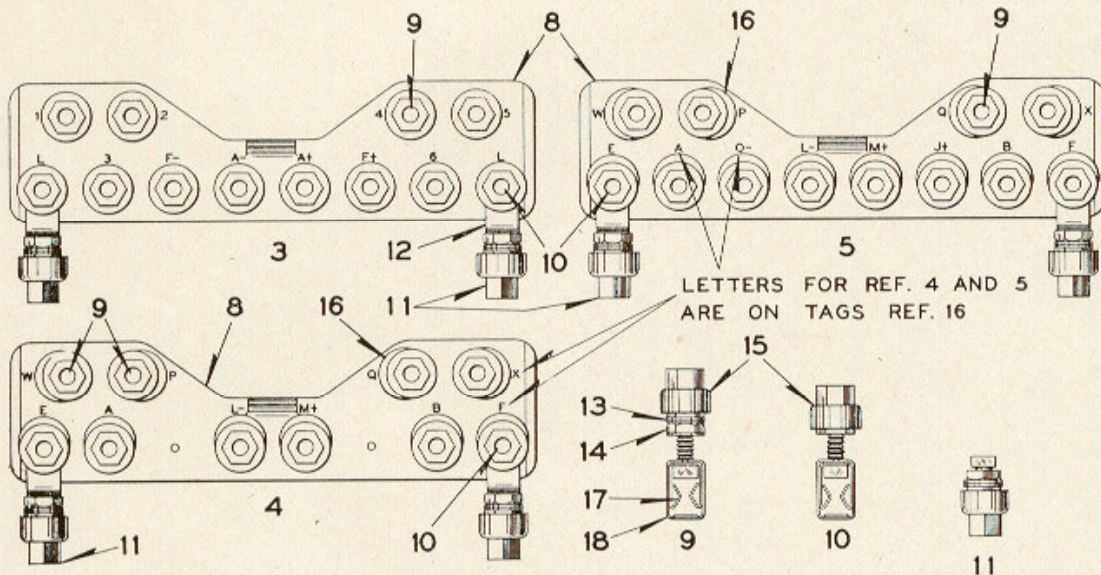
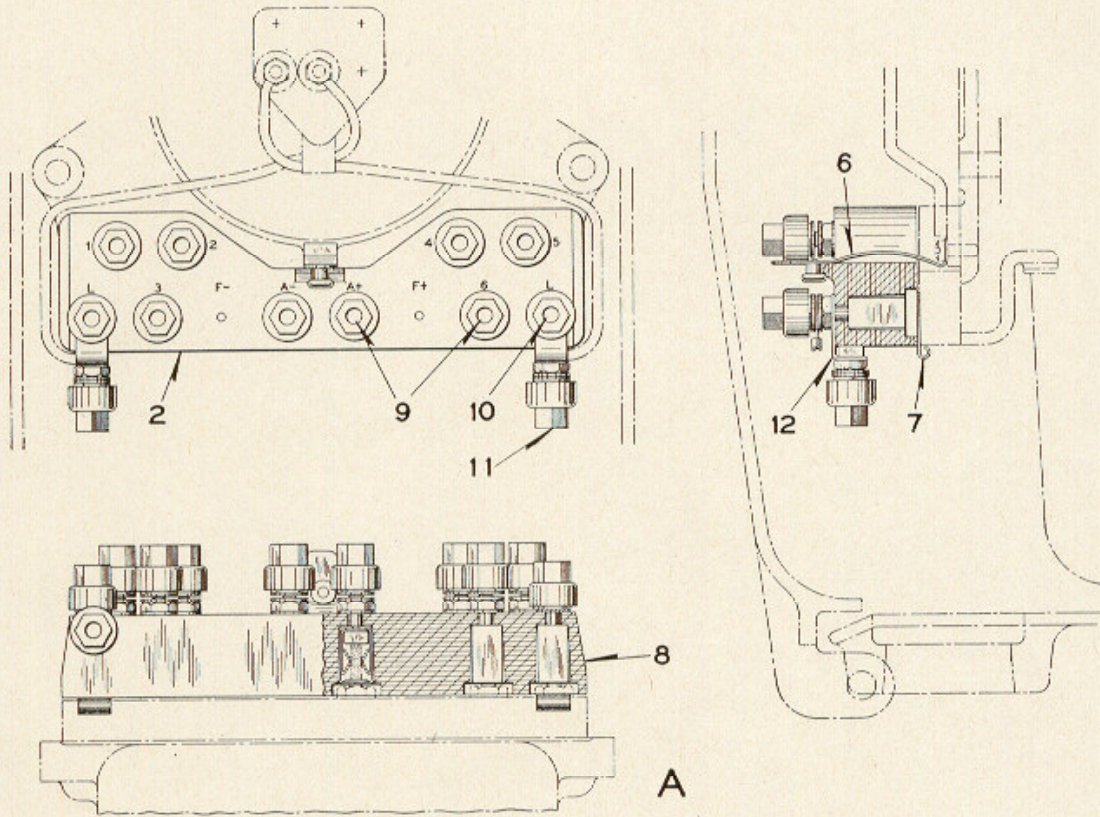


**ZCG UTILITY SCRAP
UNION MO 63084**

PLATE **B-2890**

UNION SWITCH & SIGNAL CO.



**Plug Coupler for Color Light
Searchlight Signals**

Plug Coupler for Color Light Searchlight Signals

**ZCG UTILITY SCRAP
UNION MO 63084**

(Styles "H" and "H-2")

Order by Plate, Piece, Reference and Abbreviated
Description Given in Heavy Face Type Only

Piece	Ref.	Description	Drawing Reference
213268	A	Material Necessary for Adding Plug Coupler to Existing Searchlight Signal Units Having Permanent Magnets (Inc. 1-2, 1-6 and 2-7) (Contact Terminals designated by numbers)	C-9158-9
213318	Aa	Material Necessary for Adding Plug Coupler to Existing Searchlight Signal Units Having Field Coils (Inc. 1-3, 1-6 and 2-7) (Contact Terminals designated by numbers)	C-9158-9
213319	Ab	Material Necessary for Adding Plug Coupler to Existing Searchlight Signal Units Having Permanent Magnets (Inc. 1-4, 1-6 and 2-7) (Contact Terminals designated by letters)	C-9158-9
213320	Ac	Material Necessary for Adding Plug Coupler to Existing Searchlight Signal Units Having Field Coils (Inc. 1-5, 1-6 and 2-7) (Contact Terminals designated by letters)	C-9158-9
213282	2	Plug Coupler Complete, Marked as Shown, for Searchlight Signal Units Having Permanent Magnets (Inc. 1-8, 8-9, 2-10, 2-11 and 2-12)	C-9158-10
213316	3	Plug Coupler Complete, Marked as Shown, for Searchlight Signal Units Having Field Coils (Inc. 1-8, 10-9, 2-10, 2-11 and 2-12)	C-9158-10
213283	4	Plug Coupler Complete, with Tags Marked as Shown, for Searchlight Signal Units Having Permanent Magnets (Inc. 1-8, 8-9, 2-10, 2-11, 2-12 and 10-16, marked A, B, E, F, L-, M+, P, Q, W, X)	C-9158-10
213317	5	Plug Coupler Complete, with Tags Marked as Shown, for Searchlight Signal Units Having Field Coils (Inc. 1-8, 10-9, 2-10, 2-11, 2-12 and 12-16, marked A, B, E, F, J+, L-, M+, O-, P, Q, W, X)	C-9158-10
213263	6	Retaining Spring Complete	8735-917
213266	7	Wire Terminal	8244-167
213211	8	Plug Coupler Body (Orders should specify whether for Signal Units having Permanent Magnets or Field Coils so proper holes can be drilled through)	12770-4

Plug Coupler for Color Light Searchlight Signals

(Styles "H" and "H-2")

(Continued)

Order by Plate, Piece, Reference and Abbreviated
Description Given in Heavy Face Type Only

Piece	Ref.	Description	Drawing Reference
	9	Terminal Post with Contact Springs, Receptacle, Nuts, Insulated Nut and Washers (Inc. 1-9a, 3-13, 2-14, 1-15, 2-17 and 1-18).....	12451-
141688	9a	Terminal Post Only, for Ref. 9.....	8094-1192
	10	Terminal Post with Contact Springs, Receptacle, Insulated Nut and Nut (Inc. 1-10a, 1-14, 1-15, 2-17 and 1-18).....	12451-
118364	10a	Terminal Post Only, for Refs. 10 and 11.....	8094-1192
	11	Terminal Post with Nuts and Washers (Inc. 1-10a, 2-13, 2-14 and 1-15).....	12451-
213267	12	Terminal Connector.....	8064-868
29102	13	Washer.....	7828-139
29103	14	Nut.....	8109-194
105713	15	Insulated Nut.....	12770-1
142777	16	Tag (Orders should specify marking desired).....	8988-75
213265	17	Contact Spring.....	8385-2631
213371	18	Receptacle.....	11893-883

**ZCG UTILITY SCRAP
UNION MO 63084**