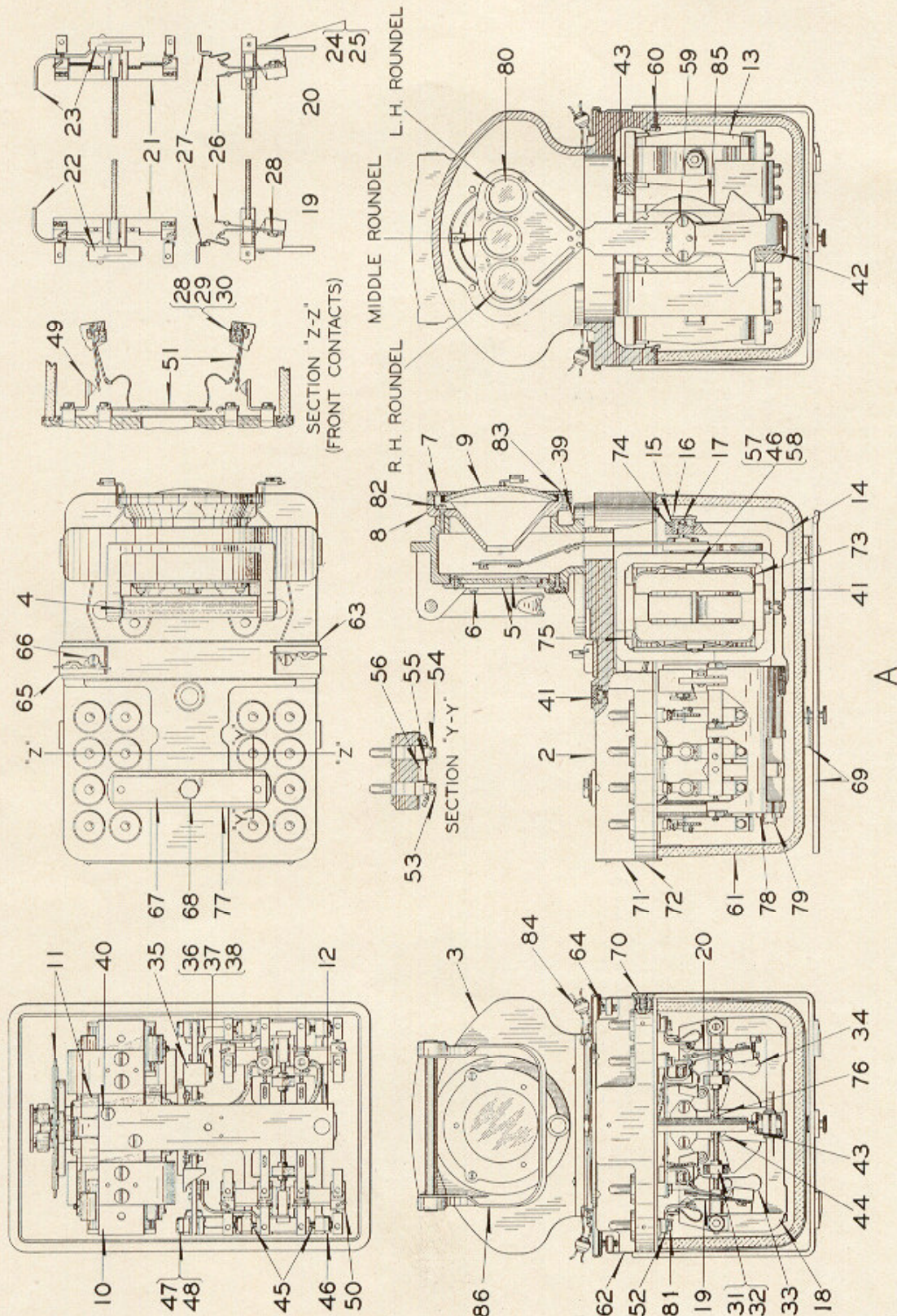


ZCG UTILITY SCRAP  
UNION MO 63084



Operating Units for "H-5" Searchlight Signals

# Style "H-5" Three-Position Color Light Searchlight Signal

**ZCG UTILITY SCRAP  
UNION MO 63084**

## Detail Parts

## Operating Units

250-Ohms operating units are adjusted for 5.5 volt P.U. and working at 70° F. P.U. and working at 150° F. will be 6.5 volts.

500-Ohms operating units are adjusted for 8 volt P.U. and working at 70° F. P.U. and working at 150° F. will be 9.35 volts.

Order by Plate, Piece, Reference and Abbreviated  
Description Given in Heavy Face Type Only

Style "H-5" D.C. Searchlight Signal Operating Unit.

Piece	Ref.	Armature Coil Res.	L. H. Roundel	Middle Roundel	R. H. Roundel	Drawing Reference
103700	A	250-Ohms	Yellow	Red	Green	C-16673-1
213342	Aa	250-Ohms	Yellow	Purple	Blank	C-16673-1
213343	Ab	250-Ohms	Yellow	Red	Blank	C-16673-1
214733	Ac	250-Ohms	Yellow	Purple and Red (Ref. 80e)	Green	C-16673-1
224871	Ad	250-Ohms	Yellow	Purple and Red (Ref. 80d)	Green	C-16673-1
210705	Ae	500-Ohms	Yellow	Red	Green	C-16673-1
210702	Af	500-Ohms	Yellow	Red	Blank	C-16673-1
210703	Ag	500-Ohms	Yellow	Purple and Red (Ref. 80d)	Green	C-16673-1
210704	Ah	500-Ohms	Yellow	Purple and Red (Ref. 80d)	Blank	C-16673-1
215145	Aj	500-Ohms	Blank	Red	Green	C-16673-1
215773	Ak	500-Ohms	Blank	Yellow	Green	C-16673-1
218186	Am	500-Ohms	Yellow	Red	Red	C-16673-1
218684	An	500-Ohms	Yellow	Purple and Red (Ref. 80e)	Green	C-16673-1
223619	Ap	500-Ohms	Yellow	Purple	Blank	C-16673-1

**ZCG UTILITY SCRAP  
UNION MO 63084**

PLATE **B-2889-3**

UNION SWITCH & SIGNAL CO.

**Style "H-5" Three-Position Color Light  
Searchlight Signal  
Detail Parts  
Operating Units**

(Continued)

Order by Plate, Piece, Reference and Abbreviated  
Description Given in Heavy Face Type Only

Piece	Ref.	Description	Drawing Reference
103705	2	Top Plate.....	C-16672-1
103737	3	Upper Case with Glass Shields and Handle.....	C-16672-4
210426	4	Pin for Ref. 3.....	B-10206-1
141661	5	Roundel Ring Complete for Ref. 3.....	7632-226
	6	Machine Screw, No. 6-40x $\frac{3}{8}$ " Fil. Hd. Br. (N.P.) for Ref. 3.	
223930	7	Retaining Ring for Ref. 3.....	11893-938
223928	8	Roundel Ring.....	7632-248
223929	9	3- $\frac{1}{8}$ " Diameter Roundel.....	8468-87
103802	10	Field Magnet Assembly Complete.....	C-16672-7
103781	11	Armature Assembly Complete (Includes Pole Shoes, 250-Ohm Coil, Armature and Spectacle, without Roundels) for Refs. A to Ad inc.....	C-16672-7
210710	11a	Armature Assembly Complete (Includes Pole Shoes, 500-Ohm Coil, Armature and Spectacle, without Roundels) for Refs. Ae to Ap inc.....	C-16672-7
107526	12	Supporting Strap Complete.....	9999-1403
103720	13	Permanent Magnet.....	12586-15
103776	14	Armature Bracket.....	C-16672-5
191779	15	Knife Edge Bearing Complete.....	12737-1
191778	16	Cap.....	12737-2
	17	Steel Ball, $\frac{1}{8}$ " diameter	
106904	18	Contact Bracket with Stop Screws.....	C-16672-2
103734	19	L.H. Contact Armature Assembly Complete.....	9968-1231
103735	20	R.H. Contact Armature Assembly Complete.....	9968-1232
103733	21	Contact Spring Block.....	9968-1230

# Style "H-5" Three-Position Color Light Searchlight Signal

**ZCG UTILITY SCRAP  
UNION MO 63084**

## Detail Parts Operating Units

(Continued)

Order by Plate, Piece, Reference and Abbreviated  
Description Given in Heavy Face Type Only

Piece	Ref.	Description	Drawing Reference
103746	22	L.H. Armature Complete for Ref. 19.....	8157-444
103745	23	R.H. Armature Complete for Ref. 20.....	8157-444
142673	24	Screw.....	8098-1300
155340	25	Nut Lock.....	8486-368
103632	26	Contact Spring Complete.....	8385-2565
103773	27	Connector Complete.....	8064-847
	28	Screw with Nut Lock Ref. 29 and Nut Ref. 30.....	12471-
150166	28a	Screw Only, for Ref. 28.....	8098-550
171092	29	Nut Lock.....	8486-405
151836	30	Nut.....	8109-445
103770	31	Counterweight.....	8109-492
32498	32	Nut.....	8109-223
103809	33	L.H. Operating Arm Complete.....	12748-6
103808	34	R.H. Operating Arm Complete.....	12748-6
167044	35	Counterweight.....	9672-192
	36	Screw with Nut Lock Ref. 37 and Nut Ref. 38.....	12471-
176618	36a	Screw Only, for Ref. 36.....	8098-1157
168115	37	Nut Lock.....	8486-405
176619	38	Nut.....	8109-70
	39	Machine Screw, No. 14-24x $\frac{7}{8}$ " Fil. Hd. S. (Tin Pl.)	
	40	Machine Screw, No. 14-24x $\frac{1}{2}$ " Fil. Hd. S. (Tin Pl.)	
	41	Machine Screw, No. 14-24x $\frac{5}{8}$ " Fil. Hd. S. (Tin Pl.)	
37409	42	Dowel, .101" x $\frac{11}{16}$ ".....	8097-336

# Style "H-5" Three-Position Color Light Searchlight Signal

## Detail Parts

**ZCG UTILITY SCRAP  
UNION MO 63084**

## Operating Units

(Continued)

Order by Plate, Piece, Reference and Abbreviated  
Description Given in Heavy Face Type Only

Piece	Ref.	Description	Drawing Reference
57496	43	Dowel, .101"x $\frac{3}{8}$ "	8097-872
	44	Machine Screw, No. 10-30x $\frac{1}{2}$ " Fil. Hd. Br. (N. Pl.)	
157854	45	Pivot Screw	8378-353
26545	46	Nut	8109-181
141684	47	Pivot Screw	8378-345
157891	48	Nut Lock	8486-368
103766	49	Front Contact Complete	8094-2375
103764	50	Back Contact Complete	8094-2374
103783	51	Connector Complete	8064-849
134516	52	Nut Lock	8486-368
164349	53	Nut Lock	8486-368
131239	54	Screw (For Coil Lead Terminals)	8098-845
103718	55	Clip	8735-881
410560	56	Carborundum Connector	410561
	57	Post with Nut Ref. 46 and two Nut Locks Ref. 58.	12471-
193691	57a	Post Only, for Ref. 57	8094-961
211701	58	Nut Lock	8486-197
	59	Machine Screw, No. 8-36x $\frac{1}{2}$ " Flat Hd. Br. (N.P.)	
103708	60	Gasket	8078-1662
103707	61	Glass Case	8163-319
103800	62	Glass Cover Support Complete	11893-853
103798	63	Supporting Plate	9999-1405
	64	Machine Screw, No. 10-30x $\frac{5}{8}$ " Flat Hd. S. (Tin Pl.)	
103753	65	Locking Plate	- 11893-851

# Style "H-5" Three-Position Color Light Searchlight Signal

**ZCG UTILITY SCRAP  
UNION MO 63084**

## Detail Parts

## Operating Units

(Continued)

Order by Plate, Piece, Reference and Abbreviated  
Description Given in Heavy Face Type Only

Piece	Ref.	Description	Drawing Reference
48215	66	Screw.....	8098-867
103722	67	Locking Strap Complete.....	11893-848
103811	68	Screw.....	8098-1436
103775	69	Supporting Rack Complete.....	C-16672-3
	70	Machine Screw, No. 14-24x $\frac{7}{16}$ " Flat Hd. Br. (N.P.)	
103813	71	Name Plate.....	8225-518
	72	Screw, No. 2x $\frac{5}{16}$ " (Tin Pl.)	
105845	73	Permanent Magnet Clip.....	8735-902
169192	74	Washer (.002" thick).....	7828-368
169193	74a	Washer (.005" thick).....	7828-368
169674	74b	Washer (.010" thick).....	7828-368
178520	75	Insulation.....	8750-2526
210711	76	Pin.....	8097-568
104302	77	Locking Bar.....	12538-199
29103	78	Nut.....	8109-194
29114	79	Nut Lock.....	8486-108
410430	80	Green Roundel.....	410430-1
413675	80a	Yellow Roundel.....	410430-1
410431	80b	Red Roundel.....	410430-1
413888	80c	Blank Roundel.....	410430-1
413738	80d	Purple and Red Roundel (Purple Strip $\frac{1}{4}$ " wide)..	410430-2
413757	80e	Purple and Red Roundel (Purple Strip $\frac{3}{8}$ " wide)..	410430-2
410436	80f	Purple Roundel.....	410430-1

PLATE **B-2889-3**

UNION SWITCH & SIGNAL CO.

# Style "H-5" Three-Position Color Light Searchlight Signal

**ZCG UTILITY SCRAP**  
**UNION MO 63084** Detail Parts

## Operating Units

(Continued)

Order by Plate, Piece, Reference and Abbreviated  
Description Given in Heavy Face Type Only

Piece	Ref.	Description	Drawing Reference
<b>62977</b>	<b>81</b>	<b>Screw (Used on all Terminals except the two for coil leads) .....</b>	<b>8098-845</b>
	<b>82</b>	<b>Machine Screw, No. 6-40x<math>\frac{1}{2}</math>" Fil. Hd. Br. (N.P.)</b>	
	<b>83</b>	<b>Machine Screw, No. 6-40x<math>\frac{3}{8}</math>" Flat Hd. Br. (N.P.)</b>	
<b>152702</b>	<b>84</b>	<b>Seal with 3" of Seal Wire .....</b>	<b>8988-33</b>
<b>103780</b>	<b>85</b>	<b>Coil, 250-Ohms .....</b>	<b>8133-510</b>
<b>210709</b>	<b>85a</b>	<b>Coil, 500-Ohms .....</b>	<b>8133-510</b>
<b>231921</b>	<b>86</b>	<b>Handle .....</b>	<b>8311-130</b>