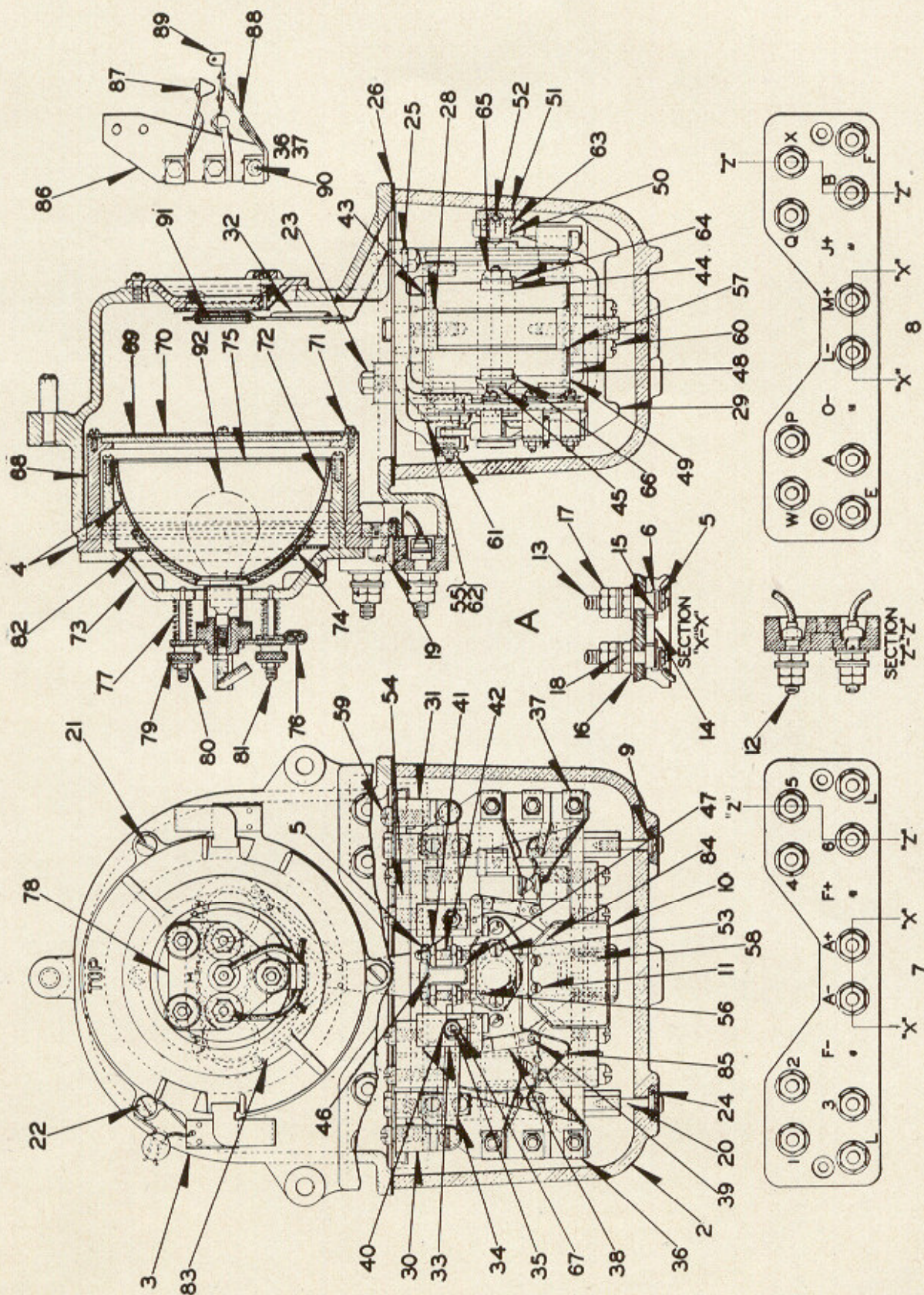


UNION SWITCH & SIGNAL CO.

ZCG UTILITY SCRAP
UNION MO 63084



STYLE "H" D. C. SEARCHLIGHT SIGNAL OPERATING UNIT
(WITH CONTACTS)

UNION SWITCH & SIGNAL CO.

STYLE "H" D. C. SEARCHLIGHT SIGNAL OPERATING UNIT
(WITH CONTACTS)

ZCG UTILITY SCRAP
UNION MO 63084

Order by Plate, Piece, Reference and Abbreviated Description Given in Heavy Face Type Only

Style "H" D.C. Searchlight Signal Operating Unit with Contacts complete (Without Lamp).								
Piece	Ref.	Armature Coil Res.	Operating Voltage	Term. Bd. Ref.	L.H. Roundel	Middle Roundel	R.H. Roundel	Drawing Reference
166447	A	250-ohms	6-8 Volts	7	Yellow	Red	Green	C-9157-2
168637	Aa	250-ohms	6-8 Volts	7	White	Red	Green	C-9157-2
169949	Ab	250-ohms	6-8 Volts	7	Yellow	Purple	Green	C-9157-2
173703	Ac	250-ohms	6-8 Volts	7	Yellow	Red	Red	C-9157-2
173812	Ad	250-ohms	6-8 Volts	7	Yellow	Purple	Purple	C-9157-2
173975	Ae	250-ohms	6-8 Volts	7	Red	Red	Green	C-9157-2
177209	Af	250-ohms	6-8 Volts	7	Yellow	Yellow	Green	C-9157-2
169688	Ag	250-ohms	6-8 Volts	8	Green	Red	Yellow	C-9157-2
167556	Ah	500-ohms	8-10 Volts	7	Yellow	Red	Green	C-9157-2
174144	Aj	500-ohms	8-10 Volts	7	Red	Red	Green	C-9157-2
174145	Ak	500-ohms	8-10 Volts	7	Yellow	Red	Red	C-9157-2
178405	Am	500-ohms	8-10 Volts	7	Yellow	Yellow	Green	C-9157-2
Piece	Ref.	Description						Drawing Reference
141439	2	Lower Glass Case.....						8163-292
144011	3	Upper Case.....						C-9158-4
173693	4	Reflector Complete with Lamp Socket and Retaining Ring.....						C-9158-5

UNION SWITCH & SIGNAL CO.

STYLE "H" D. C. SEARCHLIGHT SIGNAL OPERATING UNIT
 (WITH CONTACTS)
 (Continued)

**ZCG UTILITY SCRAP
 UNION MO 63084**

Order by Plate, Piece, Reference and Abbreviated Description Given in
 Heavy Face Type Only

Piece	Ref.	Description	Drawing Reference
164263	4a	Reflector Complete with Lamp Socket and Retaining Ring (Jam Nuts tightened but not soldered)...	C-9158-5
29956	5	Nut No. 8-36 tap (For operating units furnished prev. to 4 /29 /31).....	8109-202
176619	5a	Nut No. 12-32 tap (For operating units furnished since 4 /29 /31).....	8109-70
29353	6	Lock Washer .1695" dia. hole (For units furnished prev. to 4 /29 /31).....	8486-106
168115	6a	Lock Washer .228" dia. hole (For units furnished since 4 /29 /31).....	8486-405
	7	Terminal Board Complete with Posts, Nuts and Washers (Inc. 1-7a, 8-12, 2-13 and 1-14).....	9968-806
143602	7a	Terminal Board only, for Ref. 7.....	9968-806
	8	Terminal Board Complete with Posts, Nuts and Washers (Inc. 1-8a, 8-12, 2-13 and 1-14).....	9968-850
150174	8a	Terminal Board only, for Ref. 8.....	9968-850
37398	9	Washer.....	8274-67
169512	10	Name Plate.....	8225-384
	11	Machine Screw, No. 4-48x1/4" Rd. Hd. Br. (N. P.).	
	12	Terminal Post Complete with Nuts and Washers (Inc. 1-12a, 1-16, 3-17 and 2-18).....	12451-
141688	12a	Terminal Post only, for Ref. 12.....	8094-1192
	13	Terminal Post Complete with Nuts and Washers (Inc. 1-13a, 1-5, 1-6, 1-15, 1-16, 3-17 and 2-18)....	12451-
141689	13a	Terminal Post only, for Ref. 13.....	8094-2179

UNION SWITCH & SIGNAL CO.

STYLE "H" D. C. SEARCHLIGHT SIGNAL OPERATING UNIT
(WITH CONTACTS)
(Continued)

Order by Plate, Piece, Reference and Abbreviated Description Given in
Heavy Face Type Only

Piece	Ref.	Description	Drawing Reference
410560	14	Connector.....	410561
410561	15	Clip.	
29104	16	Washer.....	7828-138
29103	17	Nut.....	8109-194
29102	18	Washer.....	7828-139
	19	Machine Screw, No. 10-30x $\frac{5}{8}$ " Fil. Hd. Br. (N.P.).	
	20	Machine Screw, No. 10-30x $\frac{7}{8}$ " Rd. Hd. S.	
	21	Machine Screw, No. 10-30x $\frac{1}{2}$ " Fil. Hd. S. (Cad. Pl.).	
153231	22	Screw.....	8098-868
	23	Cap Screw, $\frac{1}{4}$ "-20x $\frac{5}{8}$ " Hex. Hd. S. (Cad. Pl.).	
74636	24	Nut Lock.....	8486-197
54713	25	Lock Washer.....	8486-267
141654	26	Gasket.....	8078-1434
	27	Terminal Post Complete with Nut and Washer (Inc. 1-12a, 1-16 and 1-17) Used for Dummy Post (Not shown).	
166446	28	Magnet Core Complete with Spacers, Backstraps, Pole Pieces and Screws.....	C-9158-6
141711	29	Armature Bracket.....	C-9158-2
141709	30	L. H. Supporting Arm.....	C-9158-2
141710	31	R. H. Supporting Arm.....	C-9158-2

UNION SWITCH & SIGNAL CO.

STYLE "H" D. C. SEARCHLIGHT SIGNAL OPERATING UNIT
 (WITH CONTACTS)
 (Continued)

ZCG UTILITY SCRAP
UNION MO 63084

Order by Plate, Piece, Reference and Abbreviated Description Given in
 Heavy Face Type Only

Piece	Ref.	Description	Drawing Reference
170685	32	Armature Assembly Complete with Spectacle, 250-Ohm Coil, Armature, Pole Shoes, Rollers and Pins (Without Roundels) for Refs. A to Ag.	C-9158-3
167553	32a	Armature Assembly Complete with Spectacle, 500-Ohm Coil, Armature, Pole Shoes, Rollers and Pins (Without Roundels) for Refs. Ah to Am.	C-9158-3
167044	33	Counterweight with Set Screw Ref. 35a, Nut Ref. 5a and Lock Washer Ref. 6a.	9672-192
141682	34	Operating Arm.	11893-340
141726	35	Set Screw, No. 8-36 thread (for units furnished prev. to 4/29/31).	8098-1297
176618	35a	Set Screw, No. 12-32 thread (for units furnished since 4/29/31).	8098-1157
141707	36	L. H. Contact Spring Board Complete with Contact Springs, Nuts and Washers.	9968-783
141708	37	R. H. Contact Spring Board Complete with Contact Springs, Nuts and Washers.	9968-783
141679	38	Link Complete with Insulation and Rivets.	8232-187
141701	39	Pin.	8097-852
168115	40	Lock Washer.	8486-405
141675	41	Nut.	8109-324
141698	42	Screw.	8098-583
166555	43	Permanent Magnet.	12586-7
166554	44	Magnet Clip.	11893-533
167037	45	Screw.	8094-1039

UNION SWITCH & SIGNAL CO.

STYLE "H" D. C. SEARCHLIGHT SIGNAL OPERATING UNIT
(WITH CONTACTS)
(Continued)

ZCG UTILITY SCRAP
UNION MO 63084

Order by Plate, Piece, Reference and Abbreviated Description Given in
Heavy Face Type Only

Piece	Ref.	Description	Drawing Reference
160992	46	Nut Lock	8486-155
160993	47	Nut Lock	8486-396
178520	48	Insulation	8750-2526
141676	49	Coil Spacer	10914-100
168941	50	Bearing	8350-806
168942	51	Bearing Cap	8350-807
	52	Steel Ball, 1/8" diam. (first grade).	
	53	Machine Screw, No. 8-36x1/2" Flat Hd. Br. (N.P.).	
57496	54	Pin	8097-872
119318	55	Screw	8098-464
54928	56	Rivet	10301-21
25948	57	Pin	8097-167
37409	58	Pin	8097-336
	59	Machine Screw, No. 14-24x 9/16" Fil. Hd. S. (Cad. Pl.).	
	60	Machine Screw, No. 14-24x 5/8" Fil. Hd. S. (Cad. Pl.).	
141684	61	Pivot Screw	8378-345
74798	62	Lock Washer	8486-155
169192	63	Washer .002" thick	7828-368
169193	63a	Washer .005" thick	7828-368
169674	63b	Washer .010" thick	7828-368

UNION SWITCH & SIGNAL CO.

**STYLE "H" D. C. SEARCHLIGHT SIGNAL OPERATING UNIT
(WITH CONTACTS)
(Continued)**

**Order by Plate, Piece, Reference and Abbreviated Description Given in
Heavy Face Type Only**

Piece	Ref.	Description	Drawing Reference
47483	64	Lock Washer.....	8486-197
26545	65	Nut.....	8109-181
167004	66	Lock Washer.....	8486-362
176619	67	Nut.....	8109-70
145174	68	Retaining Ring Complete with Spring.....	C-9158-2
410546	69	Reflector Glass.	
146718	70	Roundel Ring.....	7632-228
	71	Machine Screw, No. 4-48x $\frac{1}{4}$ " Fil. Hd. Br. (N. P.).	
149100	72	Reflector.....	B-12552-7
149106	73	Reflector Holder.....	C-9158-6
149103	74	Gasket.....	8078-1042
149095	75	Roundel Ring.....	7632-229
410563	76	Wire Clip.....	410563
149104	77	Spring.....	8124-218
148204	78	Lamp Socket.....	12415-12
35790	79	Nut.....	8109-239
1515	80	Nut.....	8109-23
149105	81	Stud.....	8114-361
151300	82	Washer.....	7828-346
141718	83	Spectacle (Without Roundels).....	C-9158-3

UNION SWITCH & SIGNAL CO.

**STYLE "H" D. C. SEARCHLIGHT SIGNAL OPERATING UNIT
(WITH CONTACTS)
(Continued)**

**Order by Plate, Piece, Reference and Abbreviated Description Given in
Heavy Face Type Only**

Piece	Ref.	Description	Drawing Reference
170724	84	Coil, 250-Ohms.....	8133-398
178942	84a	Coil, 500-Ohms.....	8133-398
141673	85	Pole Shoe (R. H.).....	8250-76
141674	85a	Pole Shoe (L. H.).....	8250-76
141650	86	Terminal Board.....	9968-779
141694	87	Contact Spring Complete with Block and Tip for Ref. 36	8385-2070
141695	87a	Contact Spring Complete with Block and Tip for Ref. 37	8385-2070
141697	88	Contact Spring Complete with Block and Tip for Ref. 36	8385-2071
141699	88a	Contact Spring Complete with Block and Tip for Ref. 37	8385-2071
141704	89	Contact Spring Complete with Block and Link for Ref. 36.....	8385-2069
141705	89a	Contact Spring Complete with Block and Link for Ref. 37.....	8385-2069
	90	Machine Screw, No. 8-36x1" Fil. Hd. Br. (N.P.) with two Washers Ref. 90a, one Lock Washer Ref. 6 and Nut Ref. 5.	
17376	90a	Washer.....	7828-66
410430	91	Green Roundel.....	410430-1
413675	91a	Yellow Roundel.....	410430-1
410431	91b	Red Roundel.....	410430-1
410436	91c	Purple Roundel.....	410430-1
163378	91d	White Roundel.....	C-9158-5

**ZCG UTILITY SCRAP
UNION MO 63084**

PLATE B-2885

UNION SWITCH & SIGNAL CO.

**STYLE "H" D. C. SEARCHLIGHT SIGNAL OPERATING UNIT
(WITH CONTACTS)
(Continued)**

**Order by Plate, Piece, Reference and Abbreviated Description Given in
Heavy Face Type Only**

Piece	Ref.	Description	Drawing Reference
145877	92	Lamp, 11-Volts, 11-Watts, single contact.....	B-12409-18
151138	92a	Lamp, 10-Volts, 18-Watts, single contact.....	B-12409-18
142967	92b	Lamp, 8-Volts, 10-Watts, single contact.....	B-12409-18
168741	92c	Lamp, 8-Volts, 5-Watts, single contact.....	B-12409-18
159440	92d	Lamp, 8-Volts, 13-Watts, single contact Double Filament (13-Watts, main filament, 3.5 Watts secondary filament).....	B-12409-24