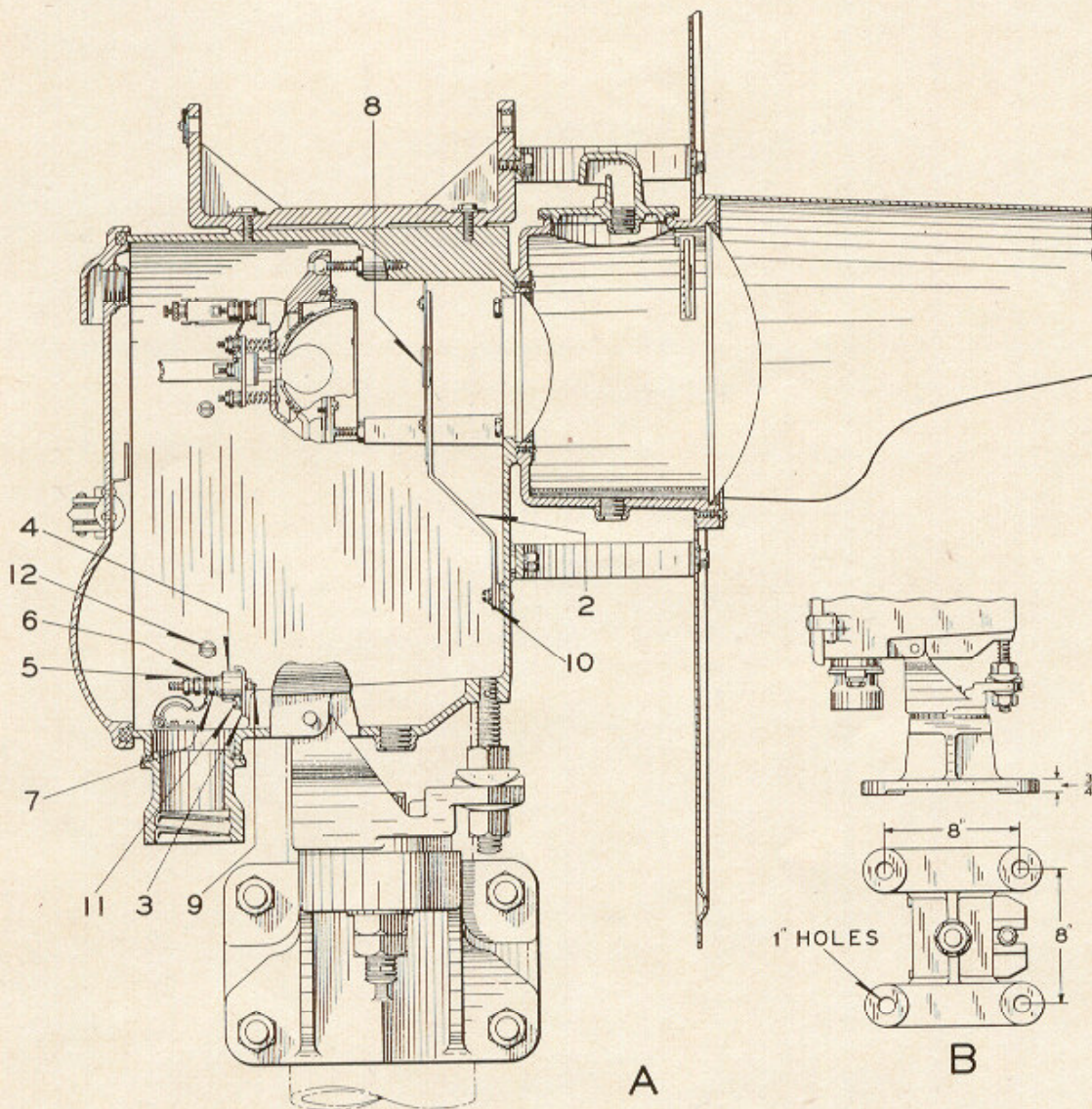


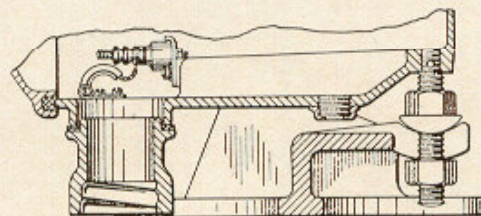
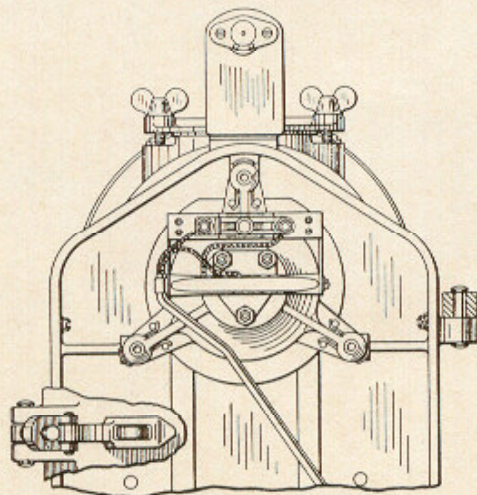
ZCG UTILITY SCRAP
UNION MO 63084



A

B

FOR ALL OTHER DETAILS
REFER TO PLATES B-2878
AND B-2882



C

Style "H-5" Inoperative Signal Unit

Style "H-5" D. C. Three-Position Color

ZCG UTILITY SCRAP
UNION MO 63084

Light Searchlight Signal

Detail Parts

Inoperative Signal Unit for High, Dwarf and Bridge Signals

Unless otherwise specified, Signal Units will be furnished as follows:

High and Bridge Signals:—2'-11" diameter Background Reference 64 of Plate B-2882; Cable Outlet Reference 7 of Plate B-2882; U-Bolts and Mounting Bracket for application to 5" Pipe Post. **Dwarf Signals:**—10° Deflecting Cover Glass Reference 49 of Plate B-2878; Cable Outlet Reference 7 of Plate B-2878.

The following material is optional and, if desired, orders should so state:

High and Bridge Signals:—Deflecting Cover Glass References 70 to 70e of Plate B-2882; Cable Outlets References 79 and 86 of Plate B-2882; 20" diameter Background Reference 64a of Plate B-2882; Phankill Unit as shown on Plate B-2878.

Dwarf Signals:—Sight Bracket Reference 68 of Plate B-2878; 20° Deflecting Cover Glass Reference 49a of Plate B-2878; Cable Outlets References 73, 74 and 85 of Plate B-2878; Signal without Deflecting Cover Glass; Phankill Unit Reference 84 of Plate B-2878.

For all details not shown on this Plate refer to Plate B-2882 for High and Bridge Signal Units and to Plate B-2878 for Dwarf Signals.

Order by Plate, Piece, Reference and Abbreviated Description Given in Heavy Face Type Only

Style "H-5" D.C. Color Light Searchlight Signal Unit with Background, Lamp, U-Bolts, Mounting Bracket, Conduit and Fittings. Orders should specify lamp (Plate B-2878).

Piece	Ref.	Mounting	Mounting Bracket	Drawing Reference
	A	Side of Mast	Ref. 41, Plate B-2882	C-16674-4
	Aa	Front, Side or Front Top of Mast	Ref. 81, Plate B-2882	C-16674-4
	B	Bridge or Platform	Ref. 78, Plate B-2882	C-16674-4
Piece	Ref.	Description		Drawing Reference
	C	Style "H-5" Inoperative One Unit Dwarf Signal with Red Roundel and Lamp. Orders should specify lamp (Plate B-2878)		C-16674-1
	Ca	Style "H-5" Two Unit Dwarf Signal with Inoperative Bottom Unit and Operative Top Unit. Inoperative Unit with Red Roundel and Lamp. Operative Unit with 250-Ohm operating unit, Ref. A, Plate B-2889-3 and lamp. Orders should specify lamps (Plate B-2878)		C-16674-5

Style "H-5" D. C. Three-Position Color Light Searchlight Signal

Detail Parts

Inoperative Signal Unit for High, Dwarf and Bridge Signals

(Continued)

Order by Plate, Piece, Reference and Abbreviated
Description Given in Heavy Face Type Only

Piece	Ref.	Description	Drawing Reference
107178	2	Roundel Holder Complete.....	C-16671-14
107172	3	Terminal Board Bracket.....	10914-1038
	4	Terminal Block with Nuts and Washers (Inc. 1-4a, 4-5, 6-6 and 2-7).....	9968-1100
181832	4a	Terminal Block without Nuts and Washers.....	9968-1100
29101	5	Nut.....	8109-193
29102	6	Washer.....	7828-139
127260	7	Nut.....	8109-194
410431	8	Red Roundel.....	410430-1
	9	Machine Screw, No. 10-30x $\frac{5}{8}$ " Fil. Hd. S. (Tin Pl.) with No. 10 Pl. S. Lock Washer ($\frac{1}{16}$ "x $\frac{3}{64}$ " (Tin Pl.) and No. 10 Hex. Nut (Tin Pl.)	
	10	Machine Screw, No. 14-24x $\frac{5}{8}$ " Fil. Hd. Bz. (N.P.) with $\frac{1}{4}$ " Pl. S. Lock Washer ($\frac{3}{32}$ "x $\frac{1}{16}$ " Tin Pl.)	
	11	Machine Screw, No. 14-24x $\frac{1}{2}$ " Fil. Hd. Bz. (N.P.) with $\frac{1}{4}$ " Pl. S. Lock Washer ($\frac{3}{32}$ "x $\frac{1}{16}$ " (Tin Pl.)	
	12	Machine Screw, No. 14-24x $\frac{3}{8}$ " Fil. Hd. Bz. (N.P.) with $\frac{1}{4}$ " Pl. S. Lock Washer ($\frac{3}{32}$ "x $\frac{1}{16}$ " (Tin Pl.)	

**ZCG UTILITY SCRAP
UNION MO 63084**