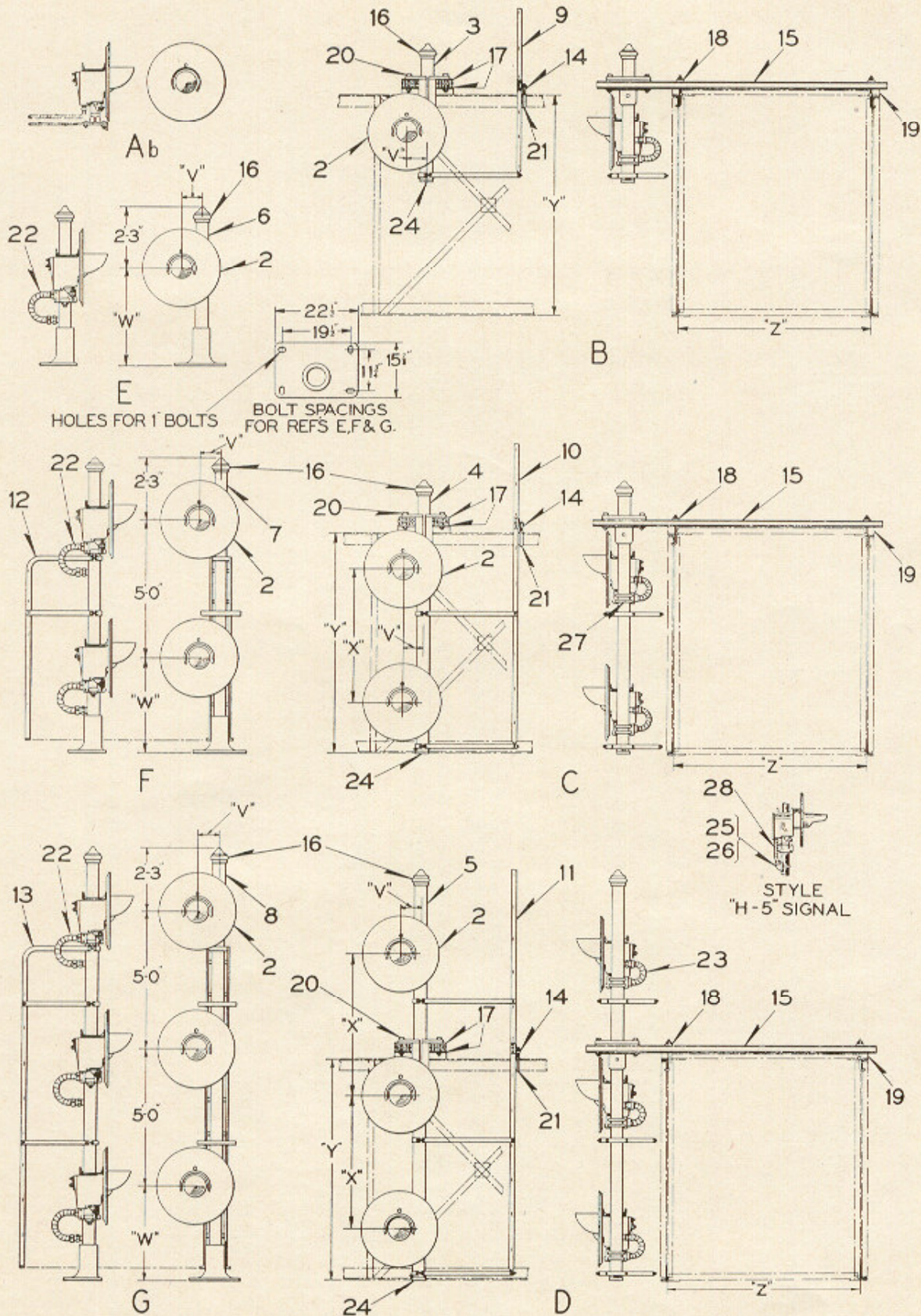


# ZCG UTILITY SCRAP UNION MO 63084



## Styles "H", "H-2" and "H-5" Searchlight Bridge Signals

# One, Two and Three Unit, Styles "H", "H-2" and "H-5" Three-Position, Color Light Searchlight Bridge Signals

**ZCG UTILITY SCRAP  
UNION MO 63084**

Unless otherwise specified, signals will be furnished with 250-Ohm operating unit, Reference A, Plate B-2885 for Style "H" signal, Reference A, Plate B-2888 for Style "H-2" signal, and Reference A, Plate B-2889-3 for Style "H-5" signal. If signals of different dimensions than those shown are desired orders should so state.

Markers as shown on Plates B-2894 and B-2895 should be specified when required.

Inoperative signal units are shown on Plates B-2880, B-2881, B-2884 and B-2891. Orders for complete signals or details should be accompanied with dimensioned plan or sketch of bridge or main bracket post.

**Order by Plate, Piece, Reference and Abbreviated  
Description Given in Heavy Face Type Only**

Piece	Ref.	Description	Drawing Reference
	Ab	<b>One Unit, Three Position Style "H" Color Light Searchlight Bridge Signal Complete</b> with operating unit, background, conduit and lamp. Orders should specify lamp (Plate B-2878). For details of signal refer to Plate B-2875.....	C-8987-
	Ac	<b>One Unit, Three Position Style "H-2" Color Light Searchlight Bridge Signal Complete</b> with operating unit, background and lamp. Orders should specify lamp (Plate B-2878). For details of signal refer to Plate B-2875.....	C-8987-
	Ad	<b>One Unit, Three Position Style "H-5" Color Light Searchlight Bridge Signal Complete</b> with operating unit, background, and lamp. Orders should specify lamp (Plate B-2878). For details of signal refer to Plate B-2882.....	C-16674-2
	B	<b>One Unit, Three Position Style "H" Color Light Searchlight Bridge Signal Complete</b> as shown, with mast, operating unit, lamp, ladder and bolts, "V" dimension 9". When ordering, specify distance from top of bridge to center of lens; also "Z" dimension and lamp (Plate B-2878).....	C-8987-
	Ba	<b>One Unit, Three Position Style "H-2" Color Light Searchlight Bridge Signal Complete</b> , with mast, operating unit, lamp, ladder and bolts, "V" dimension 9". When ordering, specify distance from top of bridge to center of lens; also "Z" dimension and lamp (Plate B-2878).....	C-8987-
	Bb	<b>One Unit, Three Position Style "H-5" Color Light Searchlight Bridge Signal Complete</b> , with mast, operating unit, lamp, ladder and bolts, "V" dimension $9\frac{1}{8}$ ". When ordering, specify distance from top of bridge to center of lens; also "Z" dimension and lamp (Plate B-2878).....	C-8987-

**One, Two and Three Unit, Styles "H", "H-2"  
and "H-5" Three-Position, Color Light  
Searchlight Bridge Signals**

**ZCG UTILITY SCRAP**  
**UNION MO 63084** (Continued)

Order by Plate, Piece, Reference and Abbreviated  
Description Given in Heavy Face Type Only

Piece	Ref.	Description	Drawing Reference
	C	<b>Two Unit, Three Position Style "H" Color Light Searchlight Bridge Signal Complete</b> as shown, with mast, operating units, lamps, ladder and bolts, "V" dimension 9". When ordering, "Y" and "Z" dimensions should always be specified; unless otherwise specified "X" dimension will be 5'-0"; also specify lamps (Plate B-2878).....	C-8987-
	Ca	<b>Two Unit, Three Position Style "H-2" Color Light Searchlight Bridge Signal Complete</b> , with mast, operating units, lamps, ladder and bolts, "V" dimension 9". When ordering, "Y" and "Z" dimensions should always be specified; unless otherwise specified "X" dimension will be 5'-0"; also specify lamps (Plate B-2878).....	C-8987-
	Cb	<b>Two Unit, Three Position Style "H-5" Color Light Searchlight Bridge Signal Complete</b> , with mast, operating units, lamps, ladder and bolts, "V" dimension 9 $\frac{15}{16}$ ". When ordering, "Y" and "Z" dimensions should always be specified; unless otherwise specified "X" dimension will be 5'-0"; also specify lamps (Plate B-2878).....	C-8987-
	D	<b>Three Unit, Three Position Style "H" Color Light Searchlight Bridge Signal Complete</b> as shown, with mast, operating units, lamps, ladder and bolts, "V" dimension 9". When ordering, "Y" and "Z" dimensions should always be specified; unless otherwise specified "X" dimension will be 5'-0"; also specify lamps (Plate B-2878).....	C-8987-
	Da	<b>Three Unit, Three Position Style "H-2" Color Light Searchlight Bridge Signal Complete</b> , with mast, operating units, lamps, ladder and bolts, "V" dimension 9". When ordering, "Y" and "Z" dimensions should always be specified; unless otherwise specified "X" dimension will be 5'-0"; also specify lamps (Plate B-2878).....	C-8987-
	Db	<b>Three Unit, Three Position Style "H-5" Color Light Searchlight Bridge Signal Complete</b> , with mast, operating units, lamps, ladder and bolts, "V" dimension 9 $\frac{15}{16}$ ". When ordering, "Y" and "Z" dimensions should always be specified; unless otherwise specified "X" dimension will be 5'-0"; also specify lamps (Plate B-2878).....	C-8987-

# One, Two and Three Unit, Styles "H", "H-2" and "H-5" Three-Position, Color Light Searchlight Bridge Signals

**ZCG UTILITY SCRAP  
UNION MO 63084**

(Continued)

Order by Plate, Piece, Reference and Abbreviated  
Description Given in Heavy Face Type Only

Piece	Ref.	Description	Drawing Reference
182036	E	One Unit, Three Position Style "H" Color Light Searchlight Bracket Signal Complete as shown, with mast, operating unit, lamp and ladder, "V" dimension 9", "W"—3'-6". Orders should specify lamp (Plate B-2878).....	B-12609-62
	Ea	One Unit, Three Position Style "H-2" Color Light Searchlight Bracket Signal Complete, with mast, operating unit, lamp and ladder, "V" dimension 9", "W"—3'-6". Orders should specify lamp (Plate B-2878).....	B-12609-62
	Eb	One Unit, Three Position Style "H-5" Color Light Searchlight Bracket Signal Complete, with mast, operating unit, lamp and ladder, "V" dimension 9 $\frac{15}{16}$ ", "W"—4'-0". Orders should specify lamp (Plate B-2878).....	B-12609-
182046	F	Two Unit, Three Position Style "H" Color Light Searchlight Bracket Signal Complete as shown, with mast, operating units, lamps and ladder, "V" dimension 9", "W"—3'-6". Orders should specify lamps (Plate B-2878).....	B-12609-63
	Fa	Two Unit, Three Position Style "H-2" Color Light Searchlight Bracket Signal Complete, with mast, operating units, lamps and ladder, "V" dimension 9", "W"—3'-6". Orders should specify lamps (Plate B-2878).....	B-12609-63
	Fb	Two Unit, Three Position Style "H-5" Color Light Searchlight Bracket Signal Complete, with mast, operating units, lamps and ladder, "V" dimension 9 $\frac{15}{16}$ ", "W"—4'-0". Orders should specify lamps (Plate B-2878).....	B-12609-
182050	G	Three Unit, Three Position Style "H" Color Light Searchlight Bracket Signal Complete as shown, with mast, operating units, lamps and ladder, "V" dimension 9", "W"—3'-6". Orders should specify lamps (Plate B-2878).....	B-12609-64
	Ga	Three Unit, Three Position Style "H-2" Color Light Searchlight Bracket Signal Complete, with mast, operating units, lamps and ladder, "V" dimension 9", "W"—3'-6". Orders should specify lamps (Plate B-2878).....	B-12609-64

# One, Two and Three Unit, Styles "H", "H-2" and "H-5" Three-Position, Color Light Searchlight Bridge Signals

**ZCG UTILITY SCRAP**  
**UNION MO 63084** (Continued)

Order by Plate, Piece, Reference and Abbreviated  
Description Given in Heavy Face Type Only

Piece	Ref.	Description	Drawing Reference
	Gb	<b>Three Unit, Three Position Style "H-5" Color Light Searchlight Bracket Signal Complete</b> , with mast, operating units, lamps and ladder, "V" dimension $9\frac{1}{8}$ " , "W"—4'-0". Orders should specify lamps (Plate B-2878).....	B-12609-
	2	<b>D.C. Style "H" Color Light Searchlight Signal Unit</b> , for 5" Pipe, with operating unit, lamp, background, bracket for side of mast mounting, U-bolts and flexible conduit (refer to Plate B-2880 for ordering references).....	C-9104-2
	2a	<b>D.C. Style "H-2" Color Light Searchlight Signal Unit</b> , for 5" Pipe, with operating unit, lamp, background, bracket for side of mast mounting, U-bolts and flexible conduit (refer to Plate B-2881 for ordering references).....	C-9104-7
	2b	<b>D.C. Style "H-5" Color Light Searchlight Signal Unit</b> , for 5" Pipe, with operating unit, lamp, background, bracket for side of mast mounting, U-bolts and flexible conduit (refer to Plate B-2882 for ordering references).....	C-16674-2
	3	<b>Mast, 5" Pipe Complete with Base, Cap, Bolts and Nuts</b> , for Refs. B and Ba (When ordering specify "Y" dim. of bridge).....	B-9893-
	3a	<b>Mast, 5" Pipe Complete with Base, Cap, Bolts and Nuts</b> , for Ref. Bb (When ordering specify "Y" dim. of bridge).....	B-9893-
	4	<b>Mast, 5" Pipe Complete with Base, Cap, Bolts and Nuts</b> , for Refs. C and Ca (When ordering specify "X" and "Y" dimensions).....	B-9893-
	4a	<b>Mast, 5" Pipe Complete with Base, Cap, Bolts and Nuts</b> , for Ref. Cb (When ordering specify "X" and "Y" dimensions).....	B-9893-
	5	<b>Mast, 5" Pipe Complete with Base, Cap, Bolts and Nuts</b> , for Refs. D and Da (When ordering specify "X" and "Y" dimensions).....	B-9893-
	5a	<b>Mast, 5" Pipe Complete with Base, Cap, Bolts and Nuts</b> , for Ref. Db (When ordering specify "X" and "Y" dimensions).....	B-9893-

# One, Two and Three Unit, Styles "H", "H-2" and "H-5" Three-Position, Color Light Searchlight Bridge Signals

**ZCG UTILITY SCRAP**  
**UNION MO 63084**

(Continued)

Order by Plate, Piece, Reference and Abbreviated  
Description Given in Heavy Face Type Only

Piece	Ref.	Description	Drawing Reference
181959	6	Mast, 5" Pipe Complete with Base, 5'-5½" from bottom of base to top of mast for Refs. E and Ea..	B-9893-301
	6a	Mast, 5" Pipe Complete with Base, 5'-11½" from bottom of base to top of mast for Ref. Eb.....	B-9893-
182044	7	Mast, 5" Pipe Complete with Base, 10'-5½" from bottom of base to top of mast for Refs. F and Fa.	B-9893-308
	7a	Mast, 5" Pipe Complete with Base, 10'-11½" from bottom of base to top of mast for Ref. Fb.....	B-9893-
182048	8	Mast, 5" Pipe Complete with Base, 15'-5½" from bottom of base to top of mast for Refs. G and Ga..	B-9893-308
	8a	Mast, 5" Pipe Complete with Base, 15'-11½" from bottom of base to top of mast for Ref. Gb.....	B-9893-
	9	Straight Ladder Complete with Platform, Bolts and Nuts, for Refs. B, Ba and Bb (When ordering refer to Plate B-2900).....	B-10313-505
	10	Straight Ladder Complete with Platform, Bolts and Nuts, for Refs. C, Ca and Cb (When ordering refer to Plate B-2900).....	B-10313-505
	11	Straight Ladder Complete with Platform, Bolts and Nuts, for Refs. D, Da and Db (When ordering refer to Plate B-2900).....	B-10313-505
182255	12	Ladder Complete with Platform, Bolts and Nuts, (6'-8" long) for Refs. F and Fa (For details refer to Plate B-2900).....	B-10313-512
	12a	Ladder Complete with Platform, Bolts and Nuts, (6'-9" long) for Ref. Fb (For details refer to Plate B-2900).....	B-10313-
182251	13	Ladder Complete with Platforms, Bolts and Nuts, (11'-8" long) for Refs. G and Ga (For details refer to Plate B-2900).....	B-10313-512
	13a	Ladder Complete with Platforms, Bolts and Nuts, (11'-9" long) for Ref. Gb (For details refer to Plate B-2900).....	B-10313-

# One, Two and Three Unit, Styles "H", "H-2" and "H-5" Three Position, Color Light Searchlight Bridge Signals

**ZCG UTILITY SCRAP** (Continued)  
**UNION MO 63084**

Order by Plate, Piece, Reference and Abbreviated  
Description Given in Heavy Face Type Only

Piece	Ref.	Description	Drawing Reference
	14	Ladder Support Complete, with Hook Bolts and Hex. Nuts (When ordering specify "Z" dimension) . . . .	B-9906-
	15	Steel Girder (When ordering specify "Z" dimension)	B-9906-
150818	16	Pinnacle Complete with Set Screw . . . . .	B-8121-17
137067	17	Plate, $\frac{3}{8}$ "x7"x19 $\frac{1}{2}$ " . . . . .	9999-372
137066	18	Plate, $\frac{3}{8}$ "x3"x22 $\frac{1}{4}$ " . . . . .	9999-373
147166	19	Filler . . . . .	B-10936-2
	20	Bolt, 1"x6 $\frac{3}{4}$ " Sq. Hd. with 1" Plain S. Lock Washer ( $\frac{3}{32}$ "x $\frac{9}{32}$ " ) and 1" Hex. Nut.	
177812	21	Hook Bolt, 1"x12 $\frac{1}{2}$ " with 1" Hex. Nut . . . . .	7913-149
177757	21a	Hook Bolt, 1"x9 $\frac{1}{2}$ " with 1" Hex. Nut . . . . .	7913-149
	22	Conduit, 1 $\frac{1}{2}$ " Galv. S.S. Flexible 2'-4" long, with 1 $\frac{1}{2}$ " Str. Box Connector and 1 $\frac{1}{2}$ " M.I. Galv. Male and Female Unions for Refs. E, Ea, F, Fa, G and Ga.	
	23	Conduit, 1 $\frac{1}{2}$ " Galv. S.S. Flexible 20" long, with 1 $\frac{1}{2}$ " Str. Box Connector and 1 $\frac{1}{2}$ " M.I. Galv. Male and Female Unions for Refs. B, Ba, C, Ca, D and Da.	
161777	24	Pipe Cap Complete with two tap bolts . . . . .	B-9931-5
107225	25	Cable Outlet Complete with Gasket Ref. 25a and solid pipe cap . . . . .	B-10342-114
127117	25a	Gasket for Ref. 25 . . . . .	8078-942
46567	26	U-bolt with $\frac{1}{2}$ " Hex. Nuts, for 5" Pipe, for Ref. 25.	8782-77
43931	27	U-Bolt with $\frac{3}{4}$ " Hex. Nuts, for 5" Pipe . . . . .	8782-66
44199	27a	U-bolt with $\frac{3}{4}$ " Hex. Nuts, for 6" Pipe . . . . .	8782-69
	28	Conduit, 2" Galv. S.S. Flexible, 16 $\frac{3}{4}$ " long for Refs. Bb, Cb, Db, Eb, Fb and Gb.	