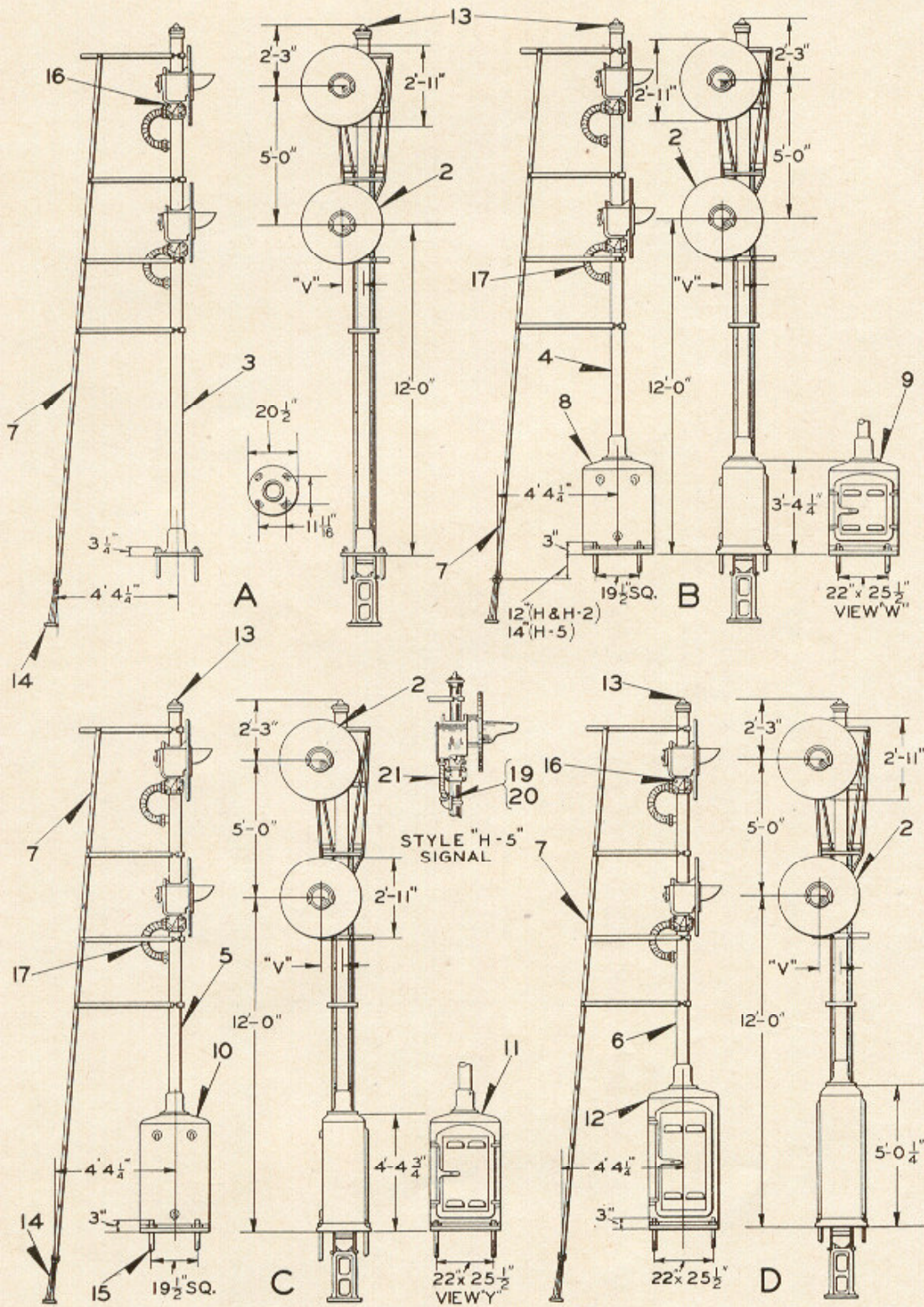


ZCG UTILITY SCRAP  
UNION MO 63084



Two Unit, Styles "H", "H-2" and "H-5"  
Searchlight Ground Signals

## Two Unit, Styles "H", "H-2" and "H-5" Three-Position Color Light Searchlight Ground Signals

**ZCG UTILITY SCRAP  
UNION MO 63084**

Unless otherwise specified, signals will be furnished with 250-Ohm operating unit, Reference A, Plate B-2885 for Style "H" Signal, Reference A, Plate B-2888 for Style "H-2" Signal and Reference A, Plate B-2889-3 for Style "H-5" Signal. If signals of different dimensions than those shown are desired orders should so state.

Markers as shown on Plates B-2894 and B-2895 should be specified when required.

Inoperative signal units are shown on Plates B-2880, B-2881, B-2884 and B-2891.

When Cable Outlets are required for Instrument Cases, orders should refer to Plate B-2898.

Order by Plate, Piece, Reference and Abbreviated  
Description Given in Heavy Face Type Only

**Two-Unit, 3-Indication, Style . . . Searchlight Ground Signal, with Ladder, Mast, Foundation Bolts, Brackets, 250-Ohm Operating Units and Lamps. Orders should specify lamps (Plate B-2878).**

Piece	Ref.	Style	"V" Dim.	Remarks	Drawing Reference
	A	"H"	9"		B-12609-
	Aa	"H-2"	9"		B-12609-
	Aaa	"H-5"	9 $\frac{15}{16}$ "		B-12609-

**Two-Unit, 3-Indication, Style . . . Searchlight Ground Signal, with Ladder, Mast, Foundation Bolts, Brackets, Instrument Case, 250-Ohm operating Units, and Lamps. Orders should specify lamps (Plate B-2878) and instrument case (Section "L" Catalog).**

Piece	Ref.	Style	Instrument Case	Foundation Bolt Spacing	"V" Dim.	Re- marks	Drawing Reference
	B	"H"	Single Door	As shown	9"		B-12609-
	Ba	"H-2"	Single Door	As shown	9"		B-12609-
	Baa	"H-5"	Single Door	As shown	9 $\frac{15}{16}$ "		B-12609-
	Bb	"H"	Double Door	Per View "W"	9"		B-12609-
	Bc	"H-2"	Double Door	Per View "W"	9"		B-12609-
	Bcc	"H-5"	Double Door	Per View "W"	9 $\frac{15}{16}$ "		B-12609-
	C	"H"	Single Door	As shown	9"		B-12609-
	Ca	"H-2"	Single Door	As shown	9"		B-12609-
	Caa	"H-5"	Single Door	As shown	9 $\frac{15}{16}$ "		B-12609-

# Two Unit, Styles "H", "H-2" and "H-5" Three-Position Color Light Searchlight Ground Signals

**ZCG UTILITY SCRAP** (Continued)  
**UNION MO 63084**

Order by Plate, Piece, Reference and Abbreviated  
Description Given in Heavy Face Type Only

Piece	Ref.	Style	Instrument Case	Foundation Bolt Spacing	"V" Dim.	Re- marks	Drawing Reference
	Cb	"H"	Double Door	Per View "Y"	9"		B-12609-
	Cc	"H-2"	Double Door	Per View "Y"	9"		B-12609-
	Ccc	"H-5"	Double Door	Per View "Y"	9 <sup>15</sup> / <sub>16</sub> "		B-12609-
	D	"H"	Double Door	As shown	9"		B-12609-
	Da	"H-2"	Double Door	As shown	9"		B-12609-
	Daa	"H-5"	Double Door	As shown	9 <sup>15</sup> / <sub>16</sub> "		B-12609-

Piece	Ref.	Description	Drawing Reference
	2	<b>D.C. Style "H" Color Light Searchlight Signal Unit, for 5" Pipe, with operating unit, lamp, background, bracket for side of mast mounting, U-bolts and flexible conduit (refer to Plate B-2880 for ordering references).....</b>	C-9104-2
	2a	<b>D.C. Style "H-2" Color Light Searchlight Signal Unit, for 5" Pipe, with operating unit, lamp, background, bracket for side of mast mounting, U-bolts and flexible conduit (refer to Plate B-2881 for ordering references).....</b>	C-9104-7
	2b	<b>D.C. Style "H-5" Color Light Searchlight Signal Unit, for 5" Pipe, with operating unit, lamp, background, bracket for side of mast mounting, U-bolts and flexible conduit (refer to Plate B-2882 for ordering references).....</b>	C-16674-2
164597	3	<b>Mast, 5" Pipe Complete with Base, 18'-11 1/2" from bottom of base to top of mast, for Refs. A and Aa..</b>	B-9893-155
	3a	<b>Mast, 5" Pipe Complete with Base, 18'-11 1/2" from bottom of base to top of mast, for Ref. Aaa.....</b>	B-9893-
181681	4	<b>Mast, 5" Pipe Complete with Base, 15'-7" from bottom of base to top of mast, for Refs. B, Ba, Bb and Bc.....</b>	B-9893-259
	4a	<b>Mast, 5" Pipe Complete with Base, 15'-7" from bottom of base to top of mast, for Refs. Baa and Bcc.....</b>	B-9893-

## Two Unit, Styles "H", "H-2" and "H-5" Three-Position Color Light Searchlight Ground Signals

**ZCG UTILITY SCRAP**  
**UNION MO 63084**

(Continued)

Order by Plate, Piece, Reference and Abbreviated  
Description Given in Heavy Face Type Only

Piece	Ref.	Description	Drawing Reference
181682	5	Mast, 5" Pipe Complete with Base, 14'-7" from bottom of base to top of mast, for Refs. C, Ca, Cb and Cc.....	B-9893-259
	5a	Mast, 5" Pipe Complete with Base, 14'-7" from bottom of base to top of mast, for Refs. Caa and Ccc.....	B-9893-
169647	6	Mast, 5" Pipe Complete with Base, 13'-11" from bottom of base to top of mast, for Refs. D and Da.	B-9893-259
	6a	Mast, 5" Pipe Complete with Base, 13'-11" from bottom of base to top of mast, for Ref. Daa.....	B-9893-
164614	7	Ladder Complete with Platform, Hand Rail and Braces, 19'-3" long, for Refs. A to Daa inclusive (For details refer to Plate B-2900).....	B-10313-475
	8	Single Door Instrument Case (3'-4 $\frac{1}{4}$ " ) for Refs. B, Ba and Baa (When ordering refer to Section L Catalog).....	C-7589-6
	9	Double Door Instrument Case (3'-4 $\frac{1}{4}$ " ) for Refs. Bb, Bc and Bcc (When ordering refer to Section L Catalog).....	C-7589-7
	10	Single Door Instrument Case (4'-4 $\frac{3}{4}$ " ) for Refs. C, Ca and Caa (When ordering refer to Section L Catalog).....	C-7589-23
	11	Double Door Instrument Case (4'-4 $\frac{3}{4}$ " ) for Refs. Cb, Cc and Ccc (When ordering refer to Section L Catalog).....	C-7589-28
	12	Double Door Instrument Case (5'-0- $\frac{1}{4}$ " ) for Refs. D, Da, and Daa (When ordering refer to Section L Catalog).....	C-7589-38
150818	13	Pinnacle Complete with Set Screw.....	B-8121-17
62563	14	Ladder Foundation Pier with two $\frac{1}{2}$ "x1 $\frac{1}{4}$ " Sq. Hd. Bolts and Hex. Nuts.....	B-8848-10
10276	15	Foundation Bolt, 1"x3'-0" with Hex. Nut and Plate Washer.....	7913-54

# Two Unit, Styles "H", "H-2" and "H-5" Three-Position Color Light Searchlight Ground Signals

(Continued)

Order by Plate, Piece, Reference and Abbreviated  
Description Given in Heavy Face Type Only

Piece	Ref.	Description	Drawing Reference
43931	16	U-bolt with $\frac{3}{4}$ " Hex. Nuts, for 5" Pipe.....	8782-66
44199	16a	U-bolt with $\frac{3}{4}$ " Hex. Nuts, for 6" Pipe.....	8782-69
	17	Conduit, $1\frac{1}{2}$ " Galv. S.S. Flexible, 2'-4" long with Box Connector and Union.	
	18	Lamp (Not shown) (when ordering refer to Plate B-2878).....	B-12409-
107225	19	Cable Outlet Complete with Gasket Ref. 19a and solid pipe cap.....	B-10342-114
127117	19a	Gasket for Ref. 19.....	8078-942
46567	20	U-bolt with $\frac{1}{2}$ " Hex. Nuts, for 5" Pipe, for Ref. 19..	8782-77
	21	Conduit, 2" Galv. S.S. Flexible, $16\frac{3}{4}$ " long.	

**ZCG UTILITY SCRAP  
UNION MO 63084**