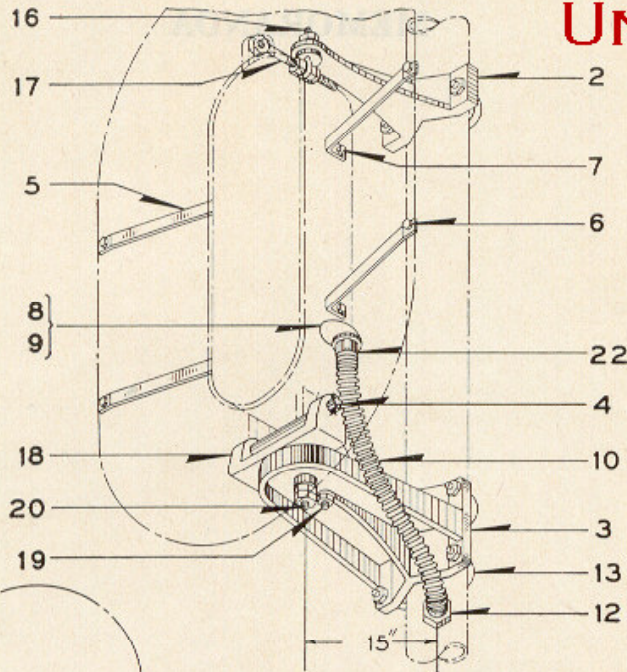
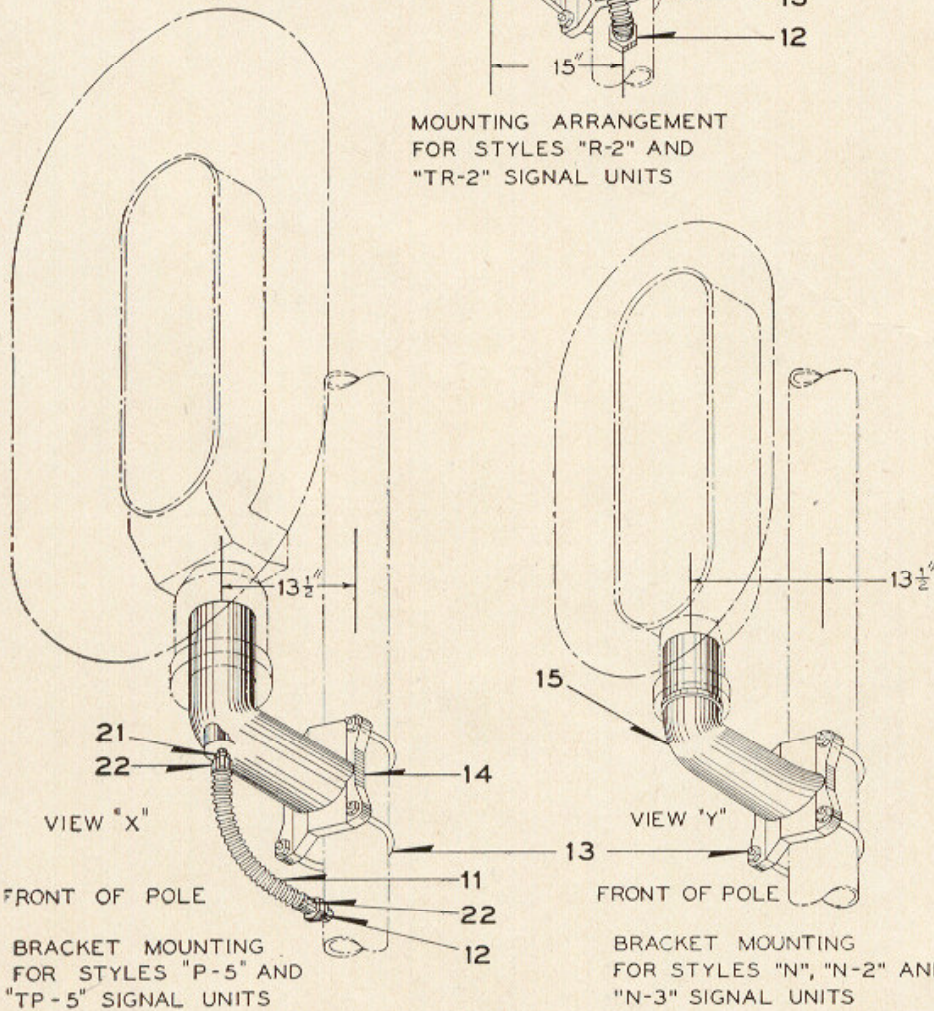


ZCG UTILITY SCRAP
UNION MO 63084



MOUNTING ARRANGEMENT
FOR STYLES "R-2" AND
"TR-2" SIGNAL UNITS



BRACKET MOUNTING
FOR STYLES "P-5" AND
"TP-5" SIGNAL UNITS

BRACKET MOUNTING
FOR STYLES "N", "N-2" AND
"N-3" SIGNAL UNITS

Mounting Brackets for Styles "R-2", "P-5",
"N", "N-2", "N-3", "TR-2" and "TP-5"
Signal Units

Mounting Brackets for Styles "R-2", "P-5", "N", "N-2", "N-3", "TR-2" and "TP-5" Signal Units

Order by Plate, Piece, Reference and Abbreviated
Description Given in Heavy Face Type Only

Piece	Ref.	Description	Drawing Reference
80774	2	Upper Adjusting Bracket Complete (Inc. 1-2a, 1-16 and 1-17).....	C-8901-5
80743	2a	Upper Adjusting Bracket Only.....	C-8901-5
80773	3	Lower Adjusting Bracket Complete (Inc. 1-3a, 1-18, 1-19 and 1-20).....	C-8901-6
80719	3a	Lower Adjusting Bracket Only.....	C-8901-6
80823	4	Pin, $\frac{3}{4}$ "x $10\frac{9}{16}$ " with two $\frac{3}{16}$ "x $1\frac{1}{8}$ " S. Cotters (Cad. Pl.).....	B-10221-1
80822	5	Brace.....	C-8901-7
	6	Bolt, $\frac{3}{8}$ "x1" Hex. Hd. S. (Cad. Pl.) with Washer Ref. 6b, $\frac{3}{8}$ " Pl. S. Lock Washer ($\frac{5}{32}$ "x $\frac{3}{32}$ " (Cad. Pl.) and Nut Ref. 6a.	
534	6a	Hex. Nut.....	8109-29
73021	6b	Washer.....	7826-34
	7	Tap Bolt, $\frac{3}{8}$ "x $1\frac{1}{2}$ " Hex. Hd. (Cad. Pl.).	
	8	Street Ell, Std. $1\frac{1}{4}$ " (Galv.).	
	8a	Street Ell, Std. 2" (Galv.).	
	9	Reducing Bushing, 2" to $1\frac{1}{4}$ " (Galv.) (Used with $1\frac{1}{4}$ " Flexible Conduit only).	
	10	$1\frac{1}{4}$ " Galv. S. S. Flexible Steel Conduit, $1\frac{1}{4}$ " I.D.x 1.665" O.D. 2'-2" long for "R-2" and "TR-2" Signals.	
	10a	2" Galv. S.S. Flexible Steel Conduit, 2" I.D.x2.440" O.D. 2'-2" long, for "R-2" and "TR-2" Signals.	
	11	$1\frac{1}{4}$ " Galv. S.S. Flexible Steel Conduit, $1\frac{1}{4}$ " I.D.x 1.665" O.D. 16" long, for "P-5" and "TP-5" Signals.	
	12	$1\frac{1}{4}$ " M.I. Galv. Male and Female Union.	
	12a	2" M.I. Galv. Male and Female Union.	

ZCG UTILITY SCRAP
UNION MO 63084

Mounting Brackets for Styles "R-2", "P-5", "N", "N-2", "N-3", "TR-2" and "TP-5" Signal Units

(Continued)

Order by Plate, Piece, Reference and Abbreviated
Description Given in Heavy Face Type Only

Piece	Ref.	Description	Drawing Reference
43931	13	"U" Bolt, $\frac{3}{4}$ " , with Hex. Nuts (Cad. Pl.) for attaching Refs. 2, 3, 14 and 15 to 5" Pipe or Casing....	8782-66
44199	13a	"U" Bolt, $\frac{3}{4}$ " , with Hex. Nuts (Cad. Pl.) for attaching Refs. 2, 3, 14 and 15 to 6" Pipe.....	8782-69
176661	13b	"U" Bolt, $\frac{3}{4}$ " , with Hex. Nuts (Cad. Pl.) for attaching Refs. 2, 3, 14 and 15 to 7" Pipe.....	8782-192
54865	13c	"U" Bolt, $\frac{3}{4}$ " , with Hex. Nuts (Cad. Pl.) for attaching Refs. 2, 3, 14 and 15 to 4" Pipe.....	8782-102
	14	Bracket with coupling for mounting Styles "P-5" and "TP-5" Signal Units to 4", 5" or 6" Pipe....	C-8034-18
68562	15	Bracket for mounting Styles "N", "N-2" and "N-3" Signal Units to 4" or 5" Pipe.....	C-8034-15
	16	Staple with $\frac{3}{16}$ "x $1\frac{1}{8}$ " S. Cotter and $\frac{3}{4}$ " Hex. Nut (Cad. Pl.).....	8191-100
80744	16a	Staple Only.....	8191-100
	17	Eye Bolt with three $\frac{3}{4}$ " Hex. Nuts (Cad. Pl.).....	8034-152
80745	17a	Eye Bolt Only.....	8034-152
80720	18	Supporting Bracket.....	C-8901-5
	19	Bolt with $\frac{3}{4}$ " Thin Hex. Nut (Cad. Pl.), $\frac{3}{16}$ "x $1\frac{1}{8}$ " S. Cotter (Cad. Pl.) and Washer Ref. 19b.....	8132-357
80748	19a	Bolt Only for Ref. 19.....	8132-357
80749	19b	Washer.....	7826-30
	20	Bolt with two 1" Thin Hex. Nuts (Cad. Pl.), $\frac{1}{4}$ "x $1\frac{1}{2}$ " Cotter (Cad. Pl.) and Washer Ref. 20b.....	8479-196
81667	20a	Bolt Only, for Ref. 20.....	8479-196
80821	20b	Washer.....	7826-20
	21	Pipe Coupling, $1\frac{1}{4}$ " Galv.	
	22	$1\frac{1}{4}$ " M.I. Galv. Straight Box Connector.	
	22a	2" M.I. Galv. Straight Box Connector.	

ZCCG UTILITY SCRAP
UNION MO 63084