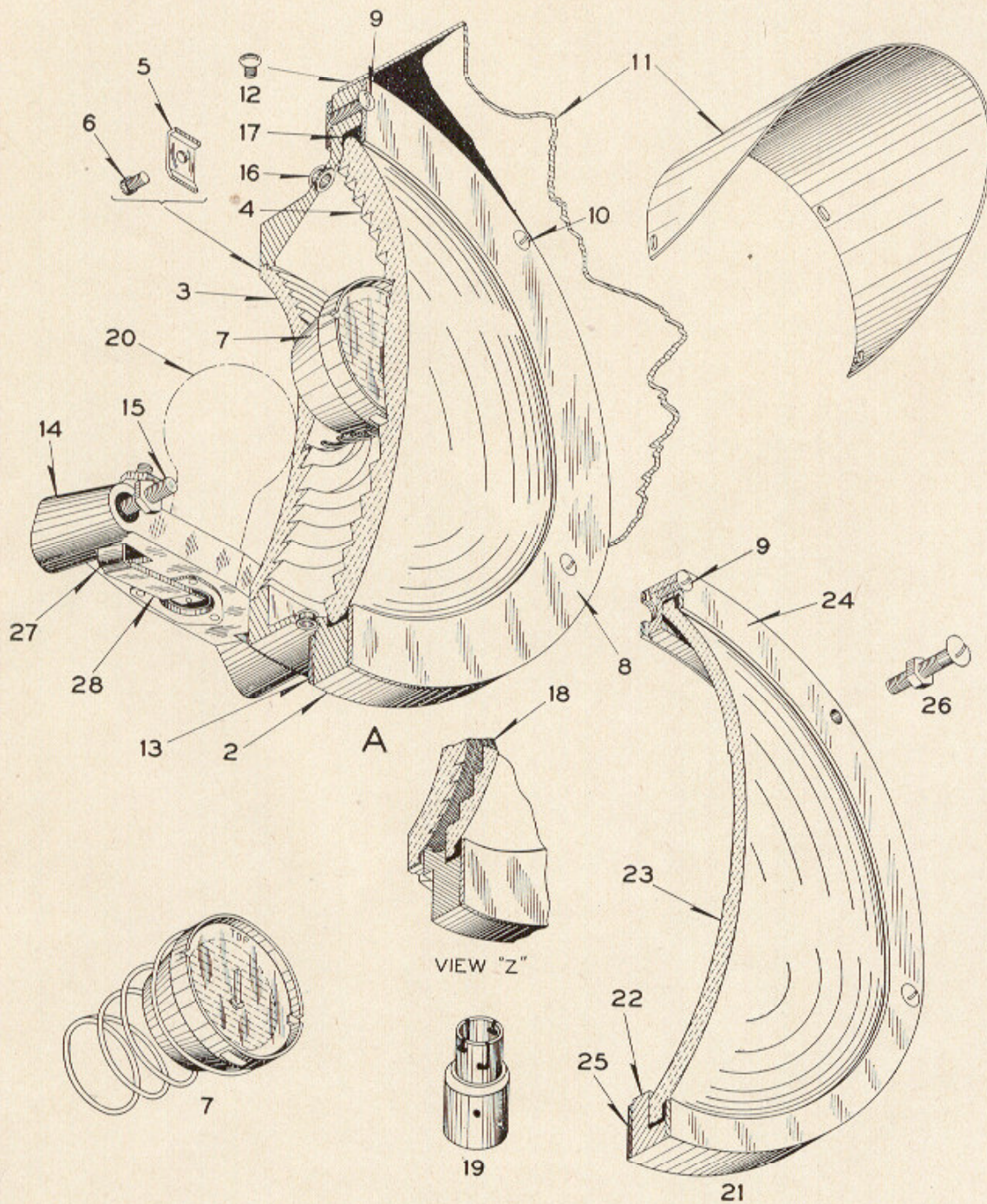


# ZCG UTILITY SCRAP UNION MO 63084



Lamp Unit Assemblies for Styles "R-2",  
"TR-2", "P-5" and "TP-5" Light  
Signal Units

## Lamp Unit Assemblies for Styles "R-2", "TR-2", "P-5" and "TP-5" Light Signal Units

Deflecting Units Ref. 7 and 7a will be arranged to deflect light down unless otherwise specified.

Order by Plate, Piece, Reference and Abbreviated  
Description Given in Heavy Face Type Only

Lamp Unit (Without Bulb).					
Piece	Ref.	Color of Inside Lens	Deflect- ing Unit	Remarks	Drawing Reference
130782	A	Green	Ref. 7	Not Arranged for Backlight	C-8901-35
130783	Aa	Yellow	Ref. 7	Not Arranged for Backlight	C-8901-35
130929	Ab	Red	Ref. 7	Not Arranged for Backlight	C-8901-35
133170	Ac	Lunar White	Ref. 7	Not Arranged for Backlight	C-8901-35
122316	Ad	Clear	Ref. 7	With Shield Ref. 18 per View "Z" Not Arranged for Backlight	C-8901-35
130784	Ae	Red	Ref. 7	Arranged for Backlight	C-8901-35
178048	Af	Yellow	Ref. 7	Arranged for Backlight	C-8901-35
137889	Ag	Green	Ref. 7a	Not Arranged for Backlight	C-8901-35
137888	Ah	Yellow	Ref. 7a	Not Arranged for Backlight	C-8901-35
137887	Aj	Red	Ref. 7a	Not Arranged for Backlight	C-8901-35
208460	Ak	Lunar White	Ref. 7	With 8° Spreadlite Lens Ref. 4a Not Arranged for Backlight	C-8901-35
208461	Am	Yellow	Ref. 7	With 8° Spreadlite Lens Ref. 4a Not Arranged for Backlight	C-8901-35
162668	An	Green	Ref. 7	With 30° Spreadlite Lens Ref. 4b Not Arranged for Backlight	C-8901-81
162669	Ap	Yellow	Ref. 7	With 30° Spreadlite Lens Ref. 4b Not Arranged for Backlight	C-8901-81
162670	Aq	Red	Ref. 7	With 30° Spreadlite Lens Ref. 4b Not Arranged for Backlight	C-8901-81

**ZCG UTILITY SCRAP  
UNION MO 63084**

# Lamp Unit Assemblies for Styles "R-2", "TR-2", "P-5" and "TP-5" Light Signal Units

(Continued)

Order by Plate, Piece, Reference and Abbreviated  
Description Given in Heavy Face Type Only

Piece	Ref.	Description	Drawing Reference
116439	2	Lens Housing (Not Arranged for Backlight).....	C-8901-49
118018	2a	Lens Housing (Arranged for Backlight).....	C-8901-49
71331	3	Green Inside Lens, 5½" Diam.....	B-8276-23
68162	3a	Yellow Inside Lens, 5½" Diam.....	B-8276-23
71329	3b	Red Inside Lens, 5½" Diam.....	B-8276-23
133171	3c	Lunar White Inside Lens, 5½" Diam.....	B-8276-23
71330	3d	Clear Inside Lens, 5½" Diam.....	B-8276-23
71186	4	Clear Outside Standard Lens, 8¾" Diam.....	B-8276-22
125818	4a	Clear Outside 8° Spreadlite Lens, 8¾" Diam.....	B-8276-31
135757	4b	Clear Outside 30° Spreadlite Lens, 8¾" Diam.....	B-8276-34
76735	5	Clip.....	11893-31
	6	Machine Screw, No. 10-30x¼" Fil. Hd. Br. for attaching Ref. 5 to Lens Housing.	
130694	7	Light Deflecting Unit for near indication 25° spread.	C-8901-63
133504	7a	Light Deflecting Unit for near indication 50° spread.	C-8901-63
71187	8	Lens Ring.....	7436-106
	9	Machine Screw, No. 10-30x¾" Rd. Hd. Br. for attaching Ref. 8 to Lens Housing and Ref. 24 to Ref. 22.	
	10	Machine Screw, No. 14-24x¾" Rd. Hd. Br. (used to plug holes in lens housing when deflecting prism is not used).	
65898	11	Hood.....	C-8842-15
	12	Machine Screw, No. 10-30x¼" Rd. Hd. Br. for attaching Ref. 11 to Lens Housing.	
	13	Gasket, ¾"x2'-6" Long.	

ZCG UTILITY SCRAP  
UNION MO 63084

# Lamp Unit Assemblies for Styles "R-2", "TR-2", "P-5" and "TP-5" Light Signal Units

(Continued)

Order by Plate, Piece, Reference and Abbreviated  
Description Given in Heavy Face Type Only

Piece	Ref.	Description	Drawing Reference
123630	14	<b>Lamp Receptacle Complete.</b> (For use with Lamp Bulbs Refs. A to Cc of Plate B-2571).....	12415-6
116518	15	<b>Stud</b> .....	8114-594
84244	16	<b>Ventilator</b> .....	7318-64
131706	17	<b>Gasket</b> .....	8078-1367
131387	18	<b>Wire Gauze Complete</b> (Used only with Clear Lens)	C-8901-3
146283	19	<b>Adapter</b> (Required when S-11 Single Contact Signal Precision Lamp Bulbs Refs. G to Hc of Plate B-2571 are used).....	12415-10
	20	<b>Lamp Bulb</b> (When ordering refer to Plate B-2571)..	B-12409-
90897	21	<b>Deflecting Prism Complete</b> (10° Spread) with mounting Screws Ref. 26.....	C-8901-8
90898	21a	<b>Deflecting Prism Complete</b> (20° Spread) with mounting Screws Ref. 26.....	C-8901-8
90892	22	<b>Lens Ring</b> .....	B-7632-41
90890	23	<b>Deflecting Prism Only</b> , 10° Spread for Ref. 21.....	B-8276-29
90891	23a	<b>Deflecting Prism Only</b> , 20° Spread for Ref. 21a.....	B-8276-29
90894	24	<b>Lens Ring</b> .....	7436-105
90893	25	<b>Gasket</b> .....	8078-1318
	26	<b>Machine Screw</b> , No. 14-24x1¼" Rd. Hd. Br. with Nut Ref. 26a. For attaching Deflecting Prism Ref. 21 or 21a to Lens Housing Ref. 2 or 2a.	
38449	26a	<b>Nut</b> for Ref. 26.....	8265-128
123641	27	<b>Contact Spring</b> with Insulation.....	8385-1300
141531	28	<b>Insulation</b> (For Repairs).....	8750-2251

**ZCG UTILITY SCRAP  
UNION MO 63084**