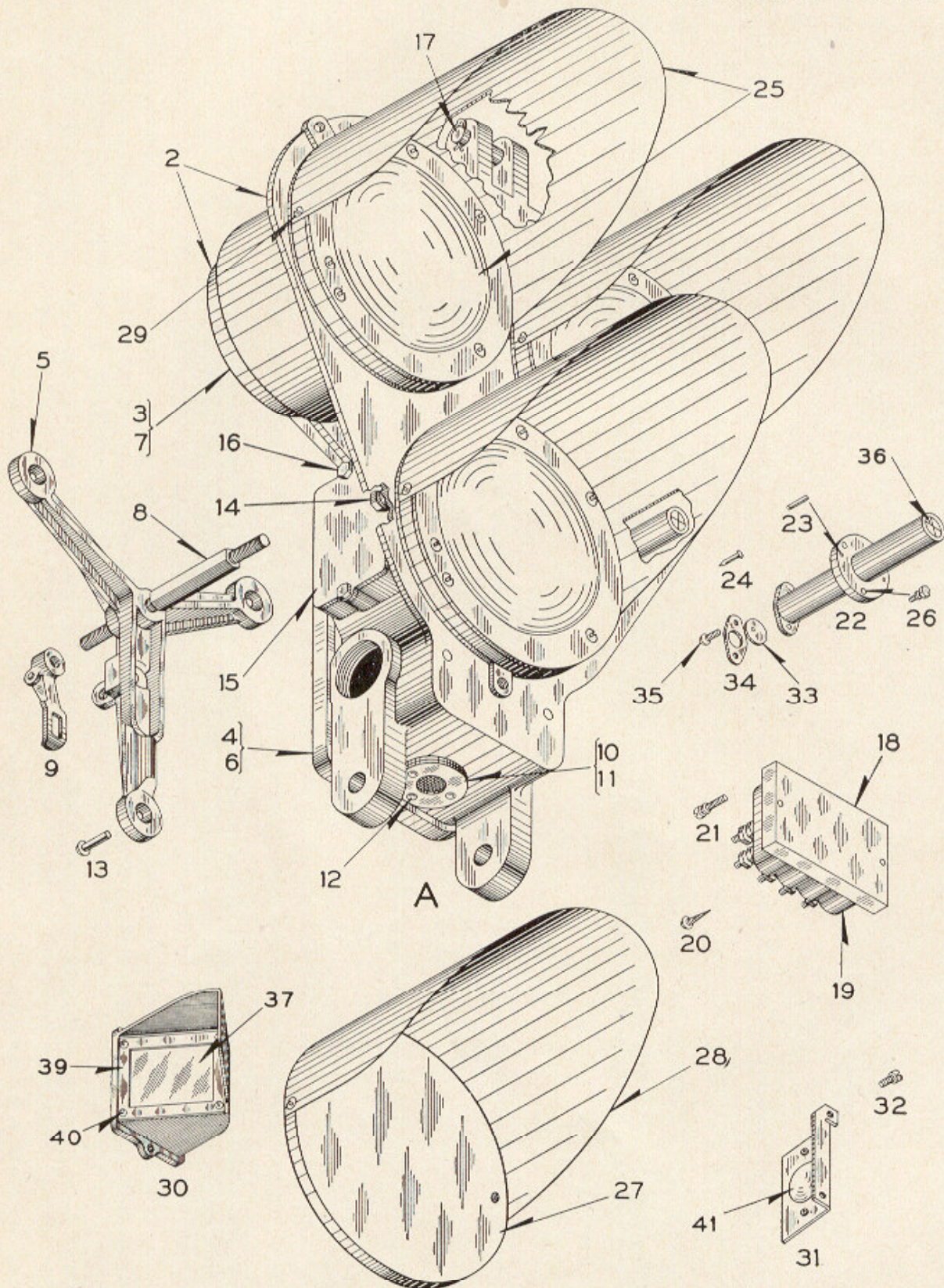


**ZCG UTILITY SCRAP
UNION MO 63084**



Three-Color Style "TR-2" Triangular Signal Unit (Without Background)

ZCG UTILITY SCRAP UNION MO 63084

UNION SWITCH & SIGNAL CO.

PLATE **B-2524**

Three-Color Style "TR-2" Triangular Signal Unit (Without Background)

Unless otherwise specified all Signal Units will be furnished with Green L.H. Top, Yellow R.H. Top and Red Bottom Lenses.

Orders should specify Lamp Bulbs desired by referring to Plate B-2571.

Individual Transformers or "L-10" Relays, when required, must be mounted in a separate case and should be ordered from Plate B-2590.

All "TR-2" Signal Units are equipped with Built-in Sighting Device. For Signal Units with Backgrounds refer to Plate B-2517.

Order by Plate, Piece, Reference and Abbreviated
Description Given in Heavy Face Type Only

Three-Color Style "TR-2" Signal Unit Ref..... Plate B-2524 (Without Individual Transformers) with Lamp Bulbs (Orders should Specify Lamp Bulbs Desired by Referring to Plate B-2571).							
Piece	Ref.	L.H. Top Light	R.H. Top Light	Bottom Light	Backlight	Remarks	Drawing Reference
	A	Green	Yellow	Red	Without		C-8900-19
	Aa	Green	Yellow	Red	With (On Bottom Lamp Unit)		C-8900-19
Piece	Ref.	Description					Drawing Reference
122204	2	Case and Covers (with Sight Tube) for 3-Color Style "TR-2" Light Signal Unit.....					C-8900-19
168022	2a	Case Only, for Ref. 2.....					C-9011-1
141257	3	Top Cover with Gasket Ref. 7.....					C-9011-3
141256	4	Bottom Cover with Gasket Ref. 6.....					C-9011-3
122207	5	Door Clamp with Staple (without Stud Ref. 8)...					C-9011-2
	6	Flax Packing, $\frac{3}{8}$ "x $\frac{3}{8}$ "x2'-6" Long for Ref. 4.					
	7	Flax Packing, $\frac{3}{8}$ "x $\frac{3}{8}$ "x19" Long for Ref. 3.					
122070	8	Stud for Door Clamp.....					8071-167
72832	9	Hasp Complete.....					8299-66
913	10	Ventilator Screen.....					B-7318-3
911	11	Washer.....					7826-40
	12	Rivet, $\frac{3}{16}$ "x $\frac{1}{2}$ " Rd. Hd. I. for attaching Refs. 10 and 11 to Case.					
	13	Rivet, $\frac{1}{4}$ "x $\frac{1}{2}$ " Rd. Hd. I. for attaching Door Covers to Door Clamp.					
	14	Tap Bolt, $\frac{3}{8}$ "-16x $\frac{3}{8}$ " Hex. Hd. (Cad. Pl.) with $\frac{3}{8}$ " Pl. S. Lock Washer ($\frac{5}{32}$ "x $\frac{3}{32}$ " (Cad. Pl.).					

Three-Color Style "TR-2" Triangular Signal Unit (Without Background)

(Continued) **ZCG UTILITY SCRAP**
UNION MO 63084

Order by Plate, Piece, Reference and Abbreviated Description Given in Heavy Face Type Only

Piece	Ref.	Description	Drawing Reference
122112	15	Backlight Cover (Used when Backlight is not used).	C-9011-3
	16	Tap Bolt, 1/4"-20x3/4" Hex. Hd. (Tin Pl.) for attaching Ref. 15 or 30 to Case.	
80726	17	Pin, 5/8"x3 1/4", with two 3/16"x1 1/8" S. Cotters (Cad. Pl.).....	B-10216-1
122071	18	Terminal Board.....	9968-647
114167	19	Terminal Block with Jumper.....	9968-629
	20	Wood Screw, No. 12x1" Rd. Hd. S. (Cad. Pl.) for attaching Ref. 19 to Ref. 18.	
	21	Machine Screw, No. 14-24x1 1/4" Fil. Hd. S. (Cad. Pl.) with Washer Ref. 21a for attaching Ref. 18 to Case.	
84	21a	Washer, for Ref. 21.....	7828-6
	21b	Machine Screw, No. 14-24x1/2" Fil. Hd. S. (Cad. Pl.) (Used to plug holes when Terminal Board is not used).	
168021	22	Sight Tube Complete (Inc. 1-33, 1-34, 2-35 and 1-36)	C-9011-18
46524	23	Dowel Pin, .1285"x5/8".....	8097-423
	24	Escutcheon Pin, No. 16x3/8" Br. for fastening Refs. 33 and 34 to Sight Tube.	
	25	Lamp Unit for Style "TR-2" Light Signal (When ordering refer to Plate B-2531).....	C-8901-35
	26	Tap Bolt, 1/4"-20x3/4" Hex. Hd. (Cad. Pl.) with 1/4" Pl. S. Lock Washer (1/16"x1/16") (Cad. Pl.) for attaching Sight Tube to Case.	
95407	27	Disc (used for blanking out).....	B-7632-41
65898	28	Hood.....	C-8842-15
	29	Machine Screw, No. 10-30x1/4" Rd. Hd. Br. (for attaching Ref. 28 to Ref. 27).	

Three-Color Style "TR-2" Triangular Signal Unit (Without Background)

ZCG UTILITY SCRAP
UNION MO 63084

(Continued)

Order by Plate, Piece, Reference and Abbreviated
Description Given in Heavy Face Type Only

Piece	Ref.	Description	Drawing Reference
138896	30	Backlight Housing Complete (Inc. 1-37, 1-38, 1-39 and 4-40).....	C-9011-12
138868	31	Backlight Lens Support Complete	C-9011-13
	32	Machine Screw, No. 10-30x$\frac{3}{8}$" Fil. Hd. S. (Tin Pl.) with No. 10 Pl. S. Lock Washer ($\frac{1}{16}$"x$\frac{3}{4}$" (Tin Pl.) for attaching Ref. 31 to Lens Unit.	
152811	33	Sight Plate	11893-436
410564	34	Clamp Plate.	
	35	Machine Screw, No. 8-36x$\frac{1}{4}$" Rd. Hd. B. (N.P.) for attaching Ref. 33 to Ref. 22 and Ref. 22 to Case.	
166313	36	Sight Complete	8350-792
138869	37	Glass Shield	8468-51
138895	38	Reflector Complete (Not Shown)	C-9011-13
138897	39	Frame	11893-308
	40	Machine Screw, No. 6-40x$\frac{3}{8}$" Rd. Hd. S. (Cad. Pl.)	
77563	41	Lens for Backlight Lens Support	B-8468-3