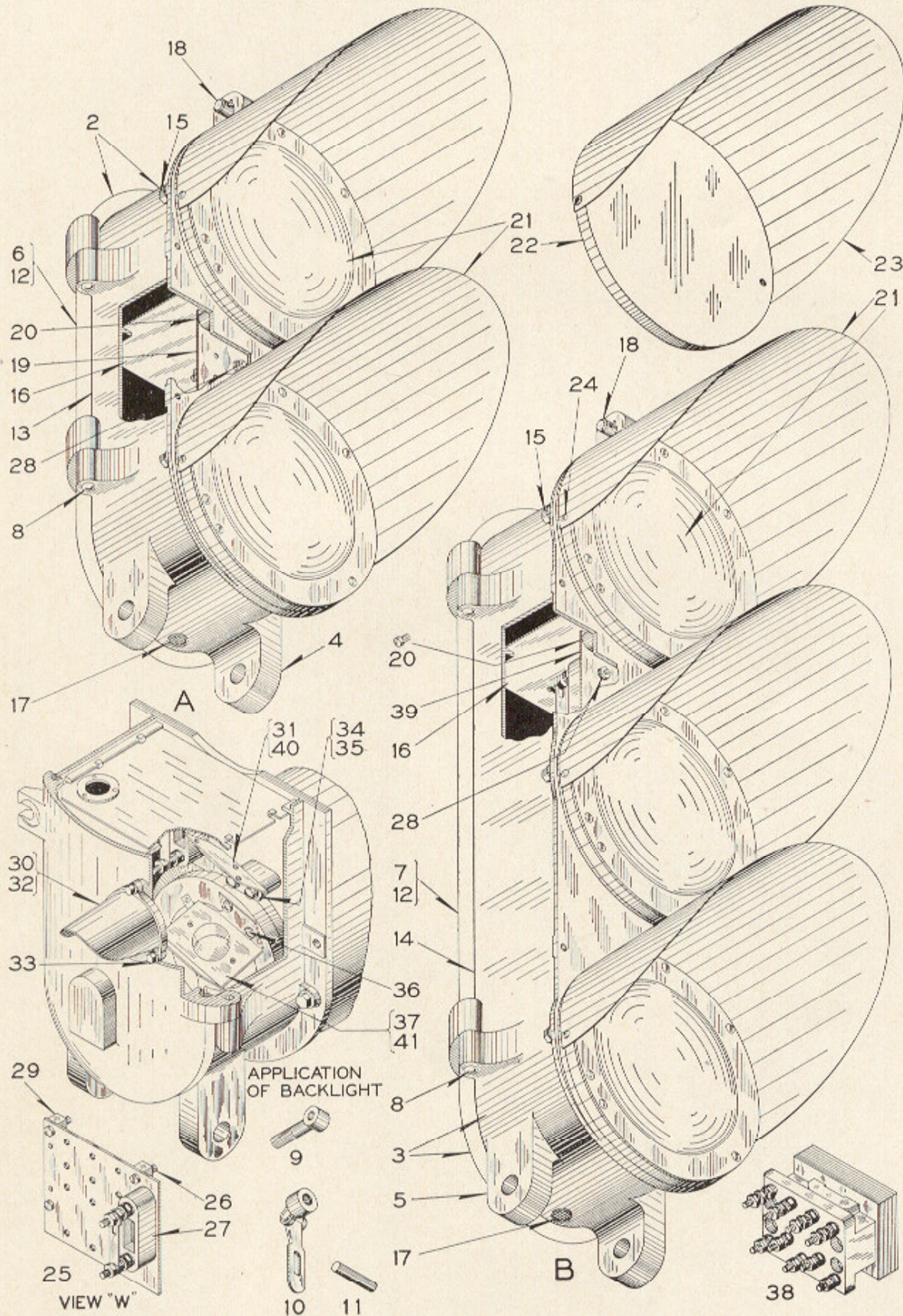


ZCG UTILITY SCRAP UNION MO 63084



Two and Three-Color Style "R-2" Signal Units (Without Backgrounds)

ZCG UTILITY SCRAP UNION MO 63084

UNION SWITCH & SIGNAL CO.

PLATE **B-2521**

Two and Three-Color Style "R-2" Signal Units (Without Backgrounds)

Unless otherwise specified, all Two-Color Signal Units will be furnished with Green Top and Red Bottom Lenses, and Three-Color Signal Units with Green Top, Yellow Middle and Red Bottom Lenses.

Orders should specify Lamp Bulbs desired by referring to Plate B-2571.

For Signal Units with Backgrounds refer to Plate B-2517.

For Signal Units with Backlight on Top Lamp Unit refer to Plate B-2521¹/₂.

When Signal Units having "L-10" Relays are desired, orders should so state and Specify Voltage and Wattage of Lamps.

Order by Plate, Piece, Reference and Abbreviated
Description Given in Heavy Face Type Only

Two-Color Style "R-2" Signal Unit Ref..... Plate B-2521 with Lamp Bulbs (Orders should specify Lamp Bulbs desired by referring to Plate B-2571).

| Piece | Ref. | Top Light | Bottom Light | Backlight | Remarks | Drawing Reference |
|-------|------|-----------|--------------|----------------------------|---|-------------------|
| | A | Green | Red | Without | Without Individual Transformers | C-8900-21 |
| | Aa | Green | Red | Without | Without Individual Transformers. With Terminal Board Ref. 25, per View "W" | C-8900-62 |
| | Ab | Green | Red | With (On Bottom Lamp Unit) | Without Individual Transformers | C-8900-31 |
| | Ac | Green | Red | Without | With Individual Transformers. (Orders should specify voltage and frequency) | C-8900-32 |

Three-Color Style "R-2" Signal Unit Ref..... Plate B-2521 with Lamp Bulbs (Orders Should Specify Lamp Bulbs Desired by Referring to Plate B-2571).

| Piece | Ref. | Top Light | Middle Light | Bottom Light | Backlight | Remarks | Drawing Reference |
|-------|------|-----------|--------------|--------------|-----------|--|-------------------|
| | B | Green | Yellow | Red | Without | Without Individual Transformers | C-8900-11 |
| | Ba | Green | Yellow | Red | Without | Without Individual Transformers. With Terminal Board Ref. 25, View "W" | C-8900-39 |

Two and Three-Color Style "R-2" Signal Units (Without Backgrounds)

**ZCG UTILITY SCRAP
UNION MO 63084**

(Continued)

Order by Plate, Piece, Reference and Abbreviated
Description Given in Heavy Face Type Only

| Piece | Ref. | Top Light | Middle Light | Bottom Light | Backlight | Remarks | Drawing Reference |
|-----------|------|-----------|--------------|--------------|----------------------------|--|-------------------|
| Bb | | Green | Yellow | Red | Without | With Individual Transformers (Orders should specify voltage and frequency) | C-8900-15 |
| Bc | | Green | Yellow | Red | With (On Bottom Lamp Unit) | Without Individual Transformers | C-8900-14 |
| Bd | | Green | Yellow | Red | With (On Bottom Lamp Unit) | With Individual Transformers (Orders should specify voltage and frequency) | C-8900-23 |

Case and Door for Style "R-2" Signal Unit.

| Piece | Ref. | Case | Door | Remarks | Drawing Reference |
|---------------|-----------|--------|---------|--------------------------------------|-------------------|
| 89978 | 2 | Ref. 4 | Ref. 6 | For 2-Color Signal without Backlight | C-8900-2 |
| 130788 | 2a | Ref. 4 | Ref. 6b | For 2-Color Signal with Backlight | C-8900-31 |
| 126170 | 3 | Ref. 5 | Ref. 7 | For 3-Color Signal without Backlight | C-8900-11 |
| 129528 | 3a | Ref. 5 | Ref. 7b | For 3-Color Signal with Backlight | C-8900-14 |

| Piece | Ref. | Description | Drawing Reference |
|---------------|----------|---|-------------------|
| 89969 | 4 | Case for 2-Color Style "R-2" Signal | C-8901-10 |
| 116468 | 5 | Case for 3-Color Style "R-2" Signal | C-8901-1 |

Two and Three-Color Style "R-2" Signal Units (Without Backgrounds)

ZCG UTILITY SCRAP UNION MO 63084 (Continued)

Order by Plate, Piece, Reference and Abbreviated
Description Given in Heavy Face Type Only

| Piece | Ref. | Description | Drawing Reference |
|--------|------|--|-------------------|
| 89925 | 6 | Door with Ventilators and Flax Packing for 2-Color Unit without Backlight and 2-Color Unit with Backlight on Top Lamp Unit..... | C-8901-11 |
| 89924 | 6a | Door Only for Ref. 6..... | C-8901-11 |
| 130779 | 6b | Door with Ventilators and Flax Packing for 2-Color Unit with Backlight on Bottom Lamp Unit..... | C-8901-64 |
| 130778 | 6c | Door Only for Ref. 6b..... | C-8901-64 |
| 80778 | 7 | Door with Ventilators and Flax Packing for 3-Color Unit without Backlight and 3-Color Unit with Backlight on Top Lamp Unit..... | C-8901-4 |
| 80724 | 7a | Door Only for Ref. 7..... | C-8901-4 |
| 116415 | 7b | Door with Ventilators and Flax Packing for 3-Color Unit with Backlight on Bottom Lamp Unit..... | C-8901-33 |
| 116414 | 7c | Door Only for Ref. 7b..... | C-8901-33 |
| 49634 | 8 | Pin, $\frac{3}{8}$"x$3\frac{3}{8}$" for fastening door to case..... | B-10207-1 |
| 50126 | 9 | Eye Bolt for Hasp..... | 8034-64 |
| 72832 | 10 | Hasp Complete | 8299-66 |
| 37075 | 11 | Pin, $\frac{3}{8}$"x$1\frac{1}{8}$" for attaching Eye Bolt to Case..... | B-10207-1 |
| 21919 | 12 | Ventilator Screen for Doors..... | B-7318-5 |
| 21918 | 12a | Ventilator Holder for Doors..... | B-7318-5 |
| | 12b | Machine Screw, No. 10-30x$\frac{1}{4}$" Rd. Hd. S. (Cad. Pl.) for fastening Refs. 12 and 12a to Door. | |
| | 13 | Flax Packing, $\frac{3}{8}$"x$\frac{3}{8}$"x$4'-1\frac{1}{2}$" Long for Refs. 6 and 6b. | |
| | 14 | Flax Packing, $\frac{3}{8}$"x$\frac{3}{8}$"x$6'-1"$ Long for Refs. 7 and 7b. | |
| | 15 | Tap Bolt, $\frac{3}{8}$"-16x$1\frac{1}{8}$" Hex. Hd. S. (Cad. Pl.) with $\frac{3}{8}$ " Pl. S. Lock Washer ($\frac{5}{32}$ "x $\frac{3}{32}$ " (Cad. Pl.) for attaching Lamp Unit to Case. | |
| 80777 | 16 | Partition Complete | C-8901-6 |

Two and Three-Color Style "R-2" Signal Units (Without Backgrounds)

(Continued)

**ZCG UTILITY SCRAP
UNION MO 63084**

Order by Plate, Piece, Reference and Abbreviated
Description Given in Heavy Face Type Only

| Piece | Ref. | Description | Drawing Reference |
|--------|------|--|-------------------|
| 34340 | 17 | Ventilator | C-7459-6 |
| 80726 | 18 | Pin, $\frac{5}{8}$ "x $3\frac{1}{4}$ " with two $\frac{3}{16}$ "x $1\frac{1}{8}$ " S. Cotters (Cad. Pl.) | B-10216-1 |
| 129345 | 19 | Terminal Board with three Terminal Blocks Ref. 27, for 2-Color Units without Backlights and 2-Color Units with Backlights on Top Lamp Unit.. | 9968-684 |
| 149056 | 19a | Terminal Board with three 0.9-Ohm resistors Ref. 27a, for 2-Color Units without Backlight and 2-Color Units with Backlight on Top Lamp Unit... | 9968-846 |
| 130781 | 19b | Terminal Board with three Terminal Blocks Ref. 27, for 2-Color Units with Backlight on Bottom Lamp Unit | 9968-700 |
| 164501 | 19c | Terminal Board with three 0.9-Ohm resistors Ref. 27a, for 2-Color Units with Backlight on bottom Lamp Unit | 9968-972 |
| 129341 | 19d | Terminal Board Only for Refs. 19, 19a, 39 and 39a.. | 9999-297 |
| 130780 | 19e | Terminal Board Only for Refs. 19b and 19c..... | 9999-312 |
| | 20 | Machine Screw, No. 14-24x $\frac{3}{8}$ " Fil. Hd. S. (Cad. Pl.) for attaching Terminal Board to Case. | |
| | 21 | Lamp Unit with Hood (When ordering refer to Plate B-2531) | C-8901-35 |
| 95407 | 22 | Disc (used for blanking out light) | B-7632-41 |
| 65898 | 23 | Hood (used when light is blanked out) | C-8842-15 |
| | 24 | Machine Screw, No. 10-30x $\frac{1}{4}$ " Rd. Hd. Br. for attaching Ref. 23 to Ref. 22. | |
| 195243 | 25 | Terminal Board with one Terminal Block Ref. 27, for 2-Color Units without Backlight or 3-Color Units with or without Backlight..... | 9968-1139 |
| 208577 | 25a | Terminal Board with one Terminal Block Ref. 27, and three 4.5-Ohms resistors Ref. 27b for 3-Color Units with and without Backlight..... | 9968-1139 |

Two and Three-Color Style "R-2" Signal Units (Without Backgrounds)

ZCG UTILITY SCRAP
UNION MO 63084

(Continued)

Order by Plate, Piece, Reference and Abbreviated
Description Given in Heavy Face Type Only

| Piece | Ref. | Description | Drawing Reference |
|--------|------|---|-------------------|
| | 25b | Terminal Board Complete with one Terminal Block Ref. 27, and two 4.5-Ohms resistors Ref. 27b for 2-Color Units without Backlight..... | 9968-1139 |
| 195242 | 25c | Terminal Board Only , for Refs. 25, 25a and 25b.... | 9999-1169 |
| | 26 | Machine Screw , No. 14-24x $\frac{7}{8}$ " Fil. Hd. S. (Cad. Pl.) for attaching Refs. 25, 25a and 25b to Case. | |
| 114163 | 27 | Terminal Block Complete (For details refer to Ref. 25a of Plate P-7290)..... | 9968-630 |
| 84470 | 27a | Adjustable Resistance Unit (0.9-Ohm) (For details refer to Ref. Bb of Plate F-6504)..... | 9065-137 |
| 156683 | 27b | Adjustable Resistance Unit (4.5-Ohms) (For details refer to Ref. Fb, Plate F-6504)..... | 9065-199 |
| | 28 | Machine Screw , No. 12-28x $\frac{7}{8}$ " Rd. Hd. S. (Cad. Pl.) with $\frac{1}{4}$ " Pl. S. Lock Washer ($\frac{1}{16}$ " x $\frac{1}{16}$ " (Cad. Pl.) and Nut Ref. 28a for attaching Refs. 27, 27a, and 27b to Terminal Board. | |
| 35216 | 28a | Nut for Ref. 28..... | 8265-121 |
| 195241 | 29 | Supporting Strip | 9999-1168 |
| 116348 | 30 | Roundel for Backlight..... | 8468-33 |
| 116445 | 31 | Reflector Support with Reflector (for Backlight) | C-8901-34 |
| 116426 | 32 | Backlight Hood | C-8901-33 |
| | 33 | Tap Bolt , $\frac{1}{4}$ "-20x $\frac{3}{4}$ " Hex. Hd. S. (Cad. Pl.) with $\frac{1}{4}$ " Pl. S. Lock Washer ($\frac{1}{16}$ " x $\frac{1}{16}$ " (Cad. Pl.). | |
| 116440 | 34 | Washer | 11893-144 |
| | 35 | Machine Screw , No. 14-24x $\frac{1}{2}$ " Fil. Hd. S. (Cad. Pl.) with $\frac{1}{4}$ " Pl. S. Lock Washer ($\frac{1}{16}$ " x $\frac{1}{16}$ " (Cad. Pl.). | |
| | 36 | Machine Screw , No. 10-30x $\frac{3}{8}$ " Fil. Hd. S. (Cad. Pl.) with No. 10 Pl. S. Lock Washer ($\frac{1}{8}$ " x $\frac{3}{4}$ " (Cad. Pl.) for attaching Backlight Lens Support to Case. | |

Two and Three-Color Style "R-2" Signal Units (Without Backgrounds)

(Continued)

Order by Plate, Piece, Reference and Abbreviated
Description Given in Heavy Face Type Only

| Piece | Ref. | Description | Drawing Reference |
|--------|------|---|-------------------|
| | 36a | Machine Screw, No. 10-30x $\frac{1}{4}$ " Fil. Hd. Br. with Washer Ref. 36b. To plug holes when Backlight Lens Support is not used. | |
| 76735 | 36b | Washer for Ref. 36a..... | 11893-31 |
| 116443 | 37 | Backlight Lens Support Complete..... | C-8901-34 |
| | 38 | Transformer (Orders should specify Voltage and frequency, See Plate F-6003)..... | C-8605- |
| 129344 | 39 | Terminal Board with four Terminal Blocks Ref. 27 for 3-Color Units with and without backlight.... | 9968-684 |
| 138849 | 39a | Terminal Board with four 0.9-Ohm Resistors Ref. 27a for 3-Color Units with and without backlight. | 9968-755 |
| 161023 | 39b | Terminal Board with six 0.9-Ohm Resistors Ref. 27a for 3-Color Units with and without backlight.... | 9968-952 |
| 116129 | 40 | Reflector for Ref. 31 (for Backlight)..... | 12523-1 |
| 77563 | 41 | Lens for Backlight Lens Support Ref. 37..... | B-8468-3 |
| | 42 | "L-10" Relay (Not shown) (When ordering refer to Plate E-5080)..... | B-12671-2 |

**ZCG UTILITY SCRAP
UNION MO 63084**