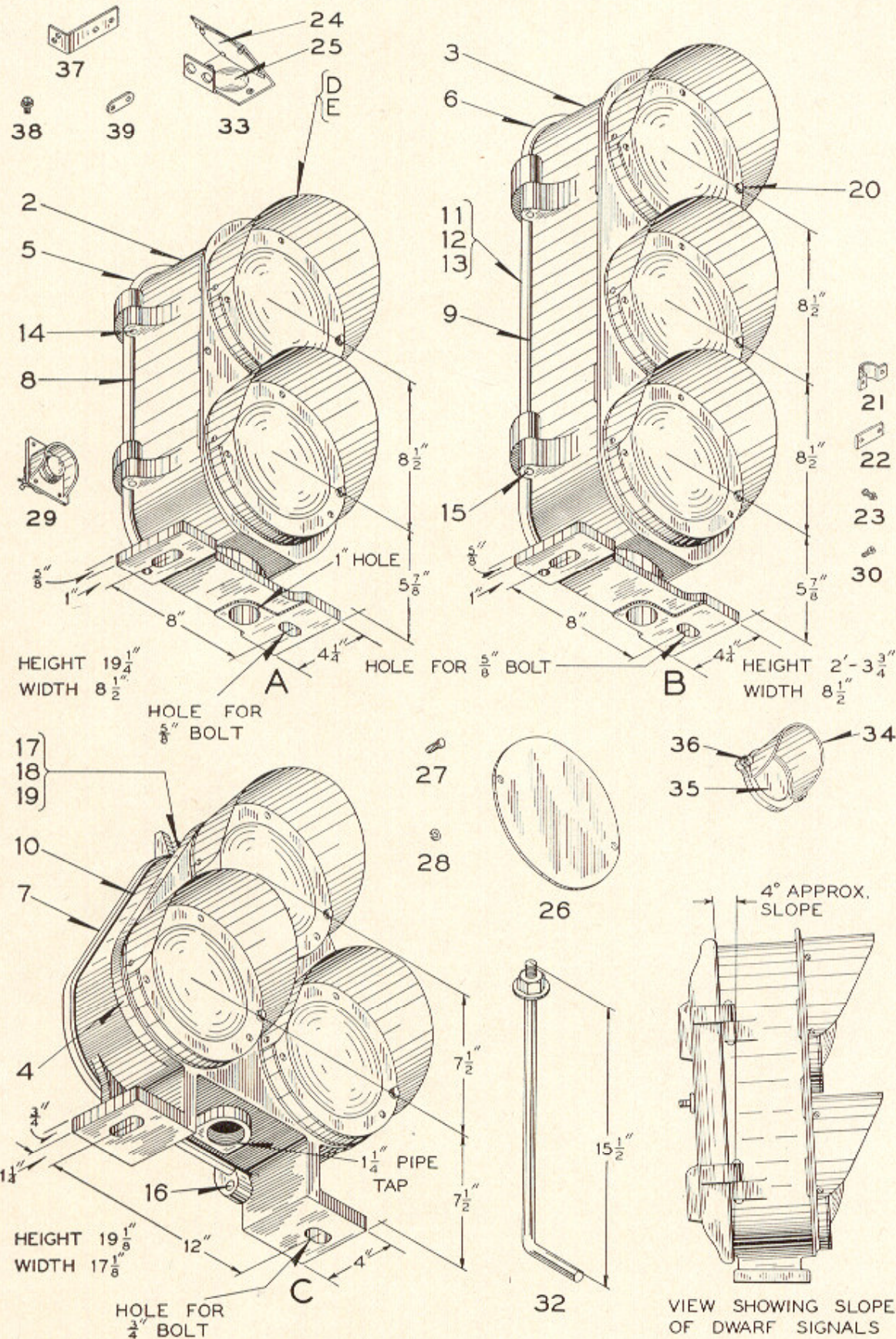


**ZCG UTILITY SCRAP
UNION MO 63084**



**Styles "N", "N-2", "TN" and "TN-2" Color
Light Dwarf Signals**

Styles "N", "N-2", "TN" and "TN-2" Color Light Dwarf Signals

Orders should specify Lamp Bulb desired by referring to Plate B-2571. If Lenses of different colors than those listed below or if Pushbutton Ref. 29 is desired, orders should so state.

Signal Cases of the Dwarf Signals shown on this Plate cannot be equipped with Transformers. If Transformers are desired they must be mounted independently of the Signal. For Style "N-2" Color Light Dwarf Signal with Relay and Transformer compartment refer to Plate B-2566.

Order by Plate, Piece, Reference and Abbreviated Description Given in Heavy Face Type Only

Two-Color Style..... Dwarf Light Signal Ref....., Plate B-2512 with Lamp Bulbs and Top Light Yellow and Bottom Light Red, for Mounting on Concrete Foundation (Orders should Specify Lamp Bulbs Desired by Referring to Plate B-2571) (Without Foundation Bolts) Dwg. B-10325-46.

Piece	Ref.	Style	Lamp Units	Backlight	Remarks
	A	"N"	Ref. D	Without	
	Aa	"N"	Ref. Db	Without	
	Ab	"N"	Ref. Da	Without	
	Ac	"N"	Ref. Dc	Without	
	Ad	"N"	Ref. D	With (On Bottom Lamp Unit)	
	Ae	"N"	Ref. Db	With (On Bottom Lamp Unit)	
	Af	"N"	Ref. Da	With (On Bottom Lamp Unit)	
	Ag	"N"	Ref. Dc	With (On Bottom Lamp Unit)	
	Ah	"N-2"	Ref. E	Without	
	Aj	"N-2"	Ref. Ea	Without	
	Ak	"N-2"	Ref. E	With (On Bottom Lamp Unit)	
	Am	"N-2"	Ref. Ea	With (On Bottom Lamp Unit)	

Three-Color Style..... Dwarf Light Signal Ref....., Plate B-2512 with Lamp Bulbs and Top Light Green, Middle Light Yellow and Bottom Light Red, for Mounting on Concrete Foundation (Orders should Specify Lamp Bulbs Desired by Referring to Plate B-2571) (Without Foundation Bolts) Dwg. B-10325-46.

Piece	Ref.	Style	Lamp Units	Backlight	Remarks
	B	"N"	Ref. D	Without	
	Ba	"N"	Ref. Db	Without	
	Bb	"N"	Ref. Da	Without	

Styles "N", "N-2", "TN" and "TN-2" Color Light Dwarf Signals

ZCG UTILITY SCRAP
UNION MO 63084 (Continued)

Order by Plate, Piece, Reference and Abbreviated Description Given in Heavy Face Type Only

Piece	Ref.	Style	Lamp Units	Backlight	Remarks
	Bc	"N"	Ref. Dc	Without	
	Bd	"N"	Ref. D	With (On Bottom Lamp Unit)	
	Be	"N"	Ref. Db	With (On Bottom Lamp Unit)	
	Bf	"N"	Ref. Da	With (On Bottom Lamp Unit)	
	Bg	"N"	Ref. Dc	With (On Bottom Lamp Unit)	
	Bh	"N-2"	Ref. E	Without	
	Bj	"N-2"	Ref. Ea	Without	
	Bk	"N-2"	Ref. E	With (On Bottom Lamp Unit)	
	Bm	"N-2"	Ref. Ea	With (On Bottom Lamp Unit)	

Three-Color Style..... Dwarf Light Signal Ref....., Plate B-2512 with Lamp Bulbs and Top Light Red, L.H. Bottom Light Yellow and R.H. Bottom Light Green, for Mounting on Concrete Foundation (Orders should Specify Lamp Bulbs Desired by Referring to Plate B-2571) (Without Foundation Bolts) Dwg. B-10325-92.

Piece	Ref.	Style	Lamp Units	Remarks
	C	"TN"	Ref. D	
	Ca	"TN"	Ref. Da	
	Cb	"TN"	Ref. Db	
	Cc	"TN"	Ref. Dc	
	Cd	"TN-2"	Ref. E	
	Ce	"TN-2"	Ref. Ea	

Piece	Ref.	Description	Drawing Reference
	*D	Lamp Unit with Lamp Grip Shell Receptacle (without Lamp Bulb) for Styles "N" and "TN" Dwarf Signals.....	C-8901-17

Styles "N", "N-2", "TN" and "TN-2" Color Light Dwarf Signals

(Continued)

**ZCG UTILITY SCRAP
UNION MO 63084**

Order by Plate, Piece, Reference and Abbreviated Description Given in Heavy Face Type Only

Piece	Ref.	Description	Drawing Reference
	*Da	Lamp Unit with Marine Shell Receptacle (without Lamp Bulb) for Styles "N" and "TN" Dwarf Signals.....	C-8901-17
	*Db	Lamp Unit with Lamp Grip Shell Receptacle and Light Deflecting Unit (without Lamp Bulb) for Styles "N" and "TN" Dwarf Signals.....	C-8901-17
	*Dc	Lamp Unit with Marine Shell Receptacle and Light Deflecting Unit (without Lamp Bulb) for Styles "N" and "TN" Dwarf Signals.....	C-8901-17
	*E	Lamp Unit with Lamp Receptacle (without Lamp Bulb) for Styles "N-2" and "TN-2" Dwarf Signals	C-8901-36
	*Ea	Lamp Unit with Lamp Receptacle and Light Deflecting Unit (without Lamp Bulb) for Styles "N-2" and "TN-2" Dwarf Signals.....	C-8901-36

*When ordering assemblies or details refer to Plate B-2532.

Case for Two-Color Style..... Dwarf Light Signal.

Piece	Ref.	Style	Remarks	Drawing Reference
116672	2	"N"		C-8901-37
126184	2a	"N"	Arranged for Backlight on Bottom Light	C-8901-37
116724	2b	"N-2"		C-8901-37
128181	2c	"N-2"	Arranged for Backlight on Bottom Light	C-8901-45

Case and Door for Two-Color Style..... Dwarf Light Signal.

Piece	Ref.	Style	Door	Case	Remarks	Drawing Reference
116725	2d	"N"	Ref. 5	Ref. 2		C-8900-13
126185	2e	"N"	Ref. 5a	Ref. 2a	Arranged for Backlight on Bottom Light	C-8900-24

Styles "N", "N-2", "TN" and "TN-2" Color Light Dwarf Signals

ZCG UTILITY SCRAP
UNION MO 63084 (Continued)

Order by Plate, Piece, Reference and Abbreviated Description Given in Heavy Face Type Only

Piece	Ref.	Style	Door	Case	Remarks	Drawing Reference
116673	2f	"N-2"	Ref. 5	Ref. 2b		C-8900-12
128182	2g	"N-2"	Ref. 5a	Ref. 2c	Arranged for Backlight on Bottom Light	C-8900-27

Case for Three-Color Style..... Dwarf Light Signal.

Piece	Ref.	Style	Remarks	Drawing Reference
99690	3	"N"		C-8901-27
124135	3a	"N"	Arranged for Backlight on Bottom Light	C-8901-27
120745	3b	"N-2"		C-8901-27
	3c	"N-2"	Arranged for Backlight on Bottom Light	C-8901-
122597	3d	"N-2"	Arranged for Pushbutton on Top Light	C-8901-27

Case and Door for Three-Color Style..... Dwarf Light Signals.

Piece	Ref.	Style	Door	Case	Remarks	Drawing Reference
99691	3e	"N"	Ref. 6	Ref. 3		C-8900-5
124133	3f	"N"	Ref. 6a	Ref. 3a	Arranged for Backlight on Bottom Light	C-8900-22
120746	3g	"N-2"	Ref. 6	Ref. 3b		C-8900-18
	3h	"N-2"	Ref. 6a	Ref. 3c	Arranged for Backlight on Bottom Light	C-8900-
122598	3j	"N-2"	Ref. 6	Ref. 3d	Arranged for Pushbutton on Top Light	C-8900-18

Styles "N", "N-2", "TN" and "TN-2" Color Light Dwarf Signals

ZCG UTILITY SCRAP
UNION MO 63084

(Continued)

Order by Plate, Piece, Reference and Abbreviated
Description Given in Heavy Face Type Only

Piece	Ref.	Description	Drawing Reference
123593	4	Case for Three-Color Style "TN-2" Dwarf Light Signal.....	C-9011-5
123594	4a	Case and Cover, for Three-Color Style "TN-2" Dwarf Light Signal.....	C-8900-20
136860	4b	Case for Three-Color Style "TN" Dwarf Light Signal.....	C-9011-5
136863	4c	Case and Cover, for Three-Color Style "TN" Dwarf Light Signal.....	C-8900-50
68248	5	Door, with Flax Packing, Staple and Ventilators for Two-Color Styles "N" and "N-2" Dwarf Light Signals.....	C-8901-19
126222	5a	Door, with Flax Packing, Staple and Ventilators, arranged for Backlight on Bottom Light for Two-Color Styles "N" and "N-2" Dwarf Light Signals	C-8901-42
68252	6	Door, with Flax Packing, Staple and Ventilators for Three-Color Styles "N" and "N-2" Dwarf Light Signals.....	C-8901-14
124131	6a	Door, with Flax Packing, Staple and Ventilators, arranged for Backlight on Bottom Light for Three-Color Styles "N" and "N-2" Dwarf Light Signals	C-8901-40
196642	7	Cover, with Flax Packing, Staple and Ventilators for Three-Color Styles "TN" and "TN-2" Dwarf Light Signals.....	C-9011-6
	8	Flax Packing $\frac{3}{8}$ " Sq. 3'-5 $\frac{1}{4}$ " long for Ref. 5.	
	8a	Flax Packing $\frac{3}{8}$ " Sq. 3'-6" long for Ref. 5a.	
	9	Flax Packing $\frac{3}{8}$ " Sq. 4'-10" long for Refs. 6 and 6a.	
	10	Flax Packing $\frac{3}{8}$ " Sq. 4'-2" long for Ref. 7.	
21918	11	Ventilator Screen Holder for Refs. 5 to 7 inc.....	B-7318-5
21919	12	Ventilator Screen Only for Refs. 5 to 7 inc.....	B-7318-5
	13	Machine Screw, No. 10-30x $\frac{1}{4}$ " Rd. Hd. S. (Cad. Pl.) for attaching Refs. 11 and 12 to Doors.	

Styles "N", "N-2", "TN" and "TN-2" Color Light Dwarf Signals

**ZCG UTILITY SCRAP
UNION MO 63084**

(Continued)

Order by Plate, Piece, Reference and Abbreviated Description Given in Heavy Face Type Only

Piece	Ref.	Description	Drawing Reference
5873	14	Pin, $\frac{3}{8}$ "x $2\frac{5}{16}$ " for fastening Door to Case.....	B-10207-1
49634	15	Pin, $\frac{3}{8}$ "x $3\frac{3}{8}$ " for fastening Door to Case.....	B-10207-1
47304	16	Pin, $\frac{3}{8}$ "x $2\frac{1}{8}$ " for fastening Cover Ref. 7 to Case Ref. 4.....	B-10207-1
50126	17	Eye Bolt for Hasp.....	8034-64
37075	18	Pin, $\frac{3}{8}$ "x $1\frac{7}{8}$ " for fastening Eye Bolt Ref. 17 to Lugs on Case.....	B-10207-1
72832	19	Hasp, Complete.....	8299-66
	20	Tap Bolt, $\frac{1}{4}$ "x $1\frac{1}{4}$ " Hex. Hd. (Cad. Pl.) with plain Lock Washer Ref. 28 for attaching Lens Unit to Case.	
68109	21	Wire Guide.....	11893-65
68414	22	Insulation.....	8750-2047
	23	Machine Screw, No. 10-30x $\frac{5}{8}$ " Rd. Hd. Br. with Hex. Nut Ref. 23a.	
40058	23a	Hex. Nut for Ref. 23.....	8265-126
116129	24	Reflector.....	12523-1
77563	25	Inner Backlight Lens.....	B-8468-3
68070	26	Sheet Steel Disc for Blank Space.....	7436-114
	27	Tap Bolt, $\frac{1}{4}$ "x $\frac{1}{2}$ " Hex. Hd. (Tin Pl.) with $\frac{1}{4}$ " Plain Lock Washer Ref. 28 for securing Ref. 26 to Lens Housing.	
	28	Lock Washer, $\frac{1}{4}$ " Plain S. ($\frac{1}{8}$ "x $\frac{1}{16}$ ") (Cad. Pl.) for Refs. 20 and 27.	
122582	29	Push Button, Complete as shown.....	B-9918-25
	30	Machine Screw, No. 8-36x $\frac{3}{8}$ " Fil. Hd. Br. for attaching Ref. 29 to Case.	
122617	31	Insulation used between Ref. 29 and Case (Not shown).....	8078-1375

Styles "N", "N-2", "TN" and "TN-2" Color Light Dwarf Signals

ZCG UTILITY SCRAP
UNION MO 63084

(Continued)

Order by Plate, Piece, Reference and Abbreviated
Description Given in Heavy Face Type Only

Piece	Ref.	Description	Drawing Reference
31402	32	Foundation Bolt, $\frac{5}{8}$ "x $15\frac{1}{2}$ " with Hex. Nut (Cad. Pl.) and Std. Plate Washer (Cad. Pl.) for Refs. A to Bm inc.....	7913-175
46558	32a	Foundation Bolt, $\frac{3}{4}$ "x10" with Hex. Nut (Cad. Pl.) and Std. Plate Washer (Cad. Pl.) for Refs. C to Ce inc.....	7913-236
124129	33	Reflector Support, with Lens and Reflector for Backlight.....	C-8901-39
126199	33a	Reflector Support, with Reflector (No Lens).....	C-8901-39
124132	34	Backlight Hood.....	C-8901-41
116348	35	Outer Backlight Lens.....	8468-33
	36	Tap Bolt, $\frac{1}{4}$ "-20x $\frac{3}{4}$ " Hex. Hd. (Cad. Pl.) with Plain Lock Washer ($\frac{1}{8}$ "x $\frac{1}{16}$ " (Cad. Pl.) for Ref. 34.	
124127	37	Bracket for supporting Ref. 33.....	10914-38
	38	Machine Screw, No. 14-24x $\frac{3}{8}$ " Fil. Hd. S. (Cad. Pl.) with plain Lock Washer ($\frac{1}{16}$ "x $\frac{1}{16}$ " (Cad. Pl.) for securing Ref. 33 to Case.	
	38a	Machine Screw, No. 14-24x $\frac{3}{8}$ " Fil. Hd. S. (Cad. Pl.) for Ref. 37.	
116440	39	Washer for Ref. 38.....	11893-144