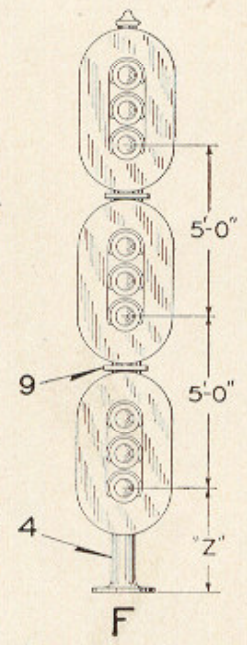
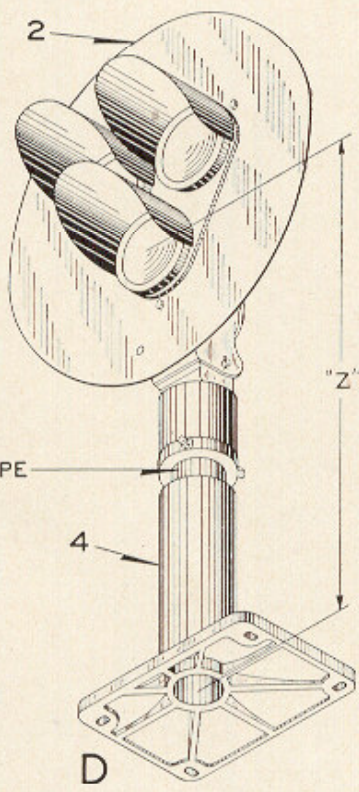
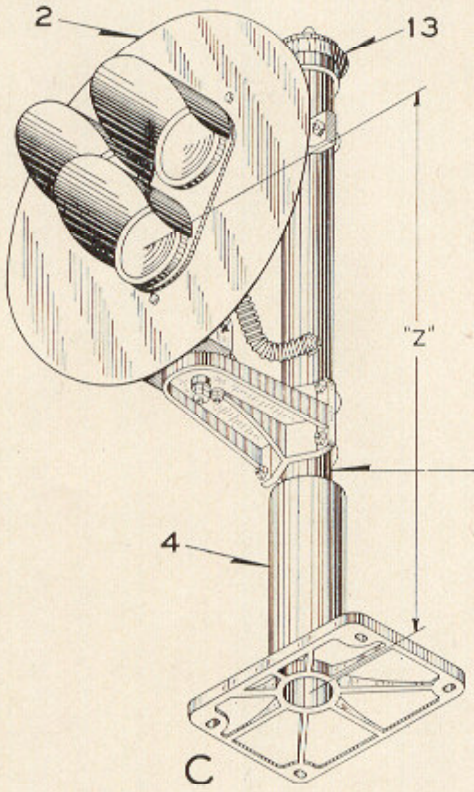
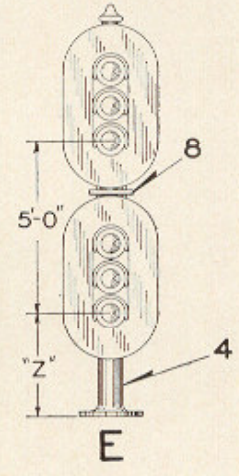
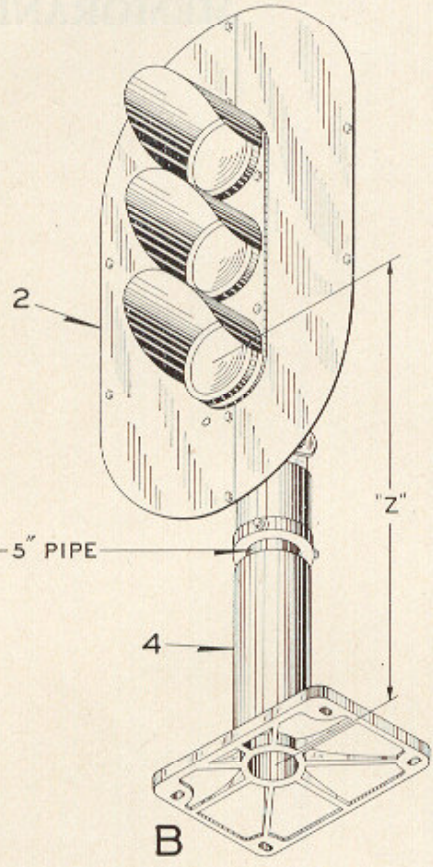
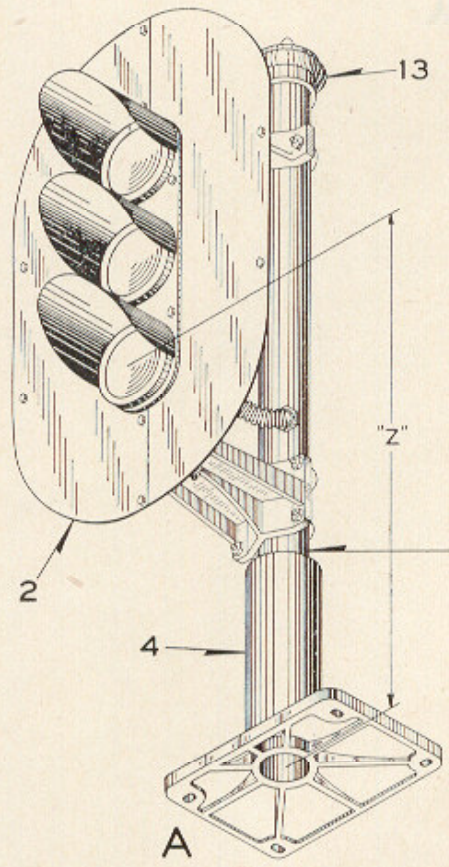
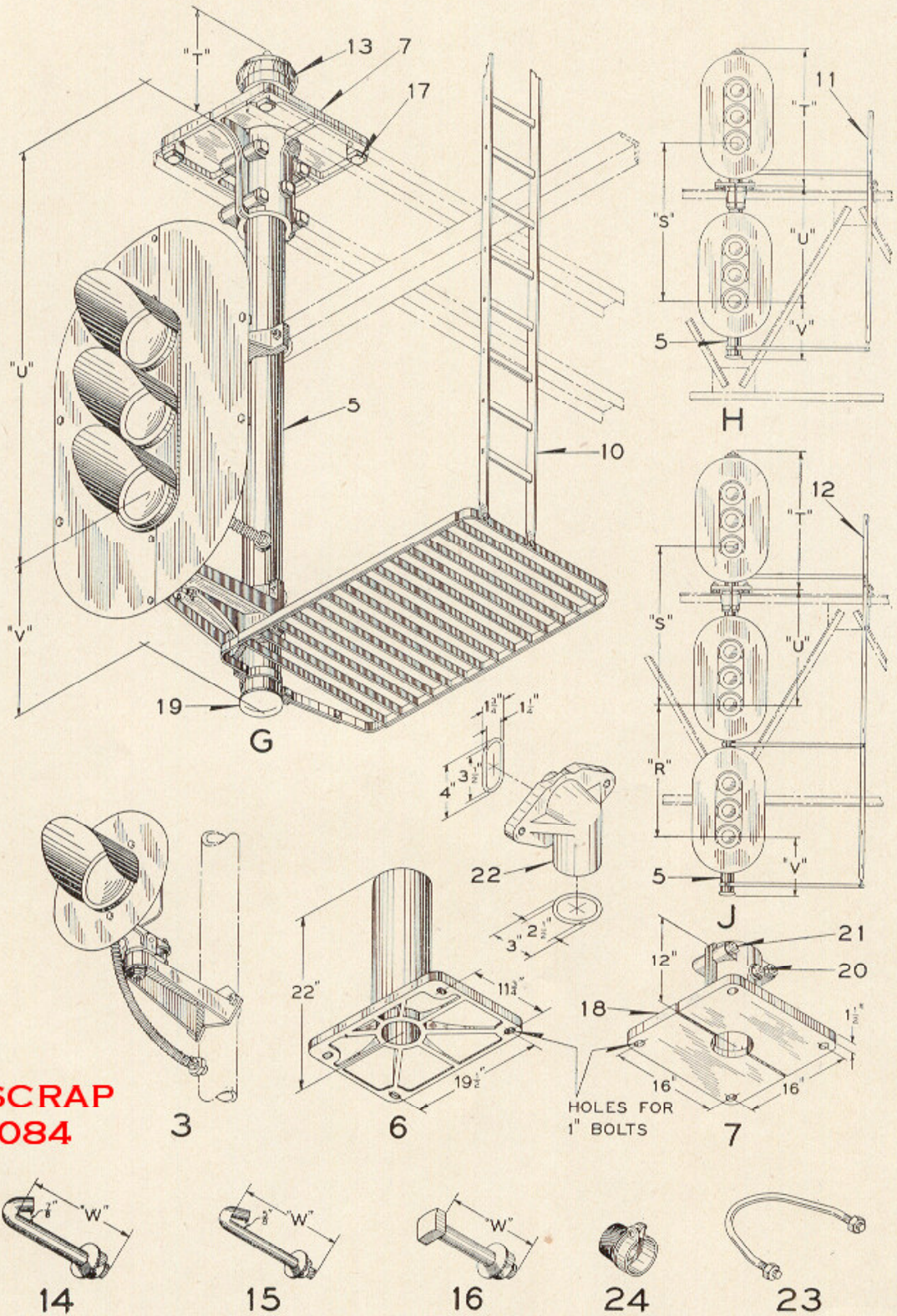


ZCG UTILITY SCRAP
UNION MO 63084



Styles "R-2", "P-5", "TR-2" and "TP-5" Color
Light Signals for Bridge and Bracket
Post Mounting



ZCG UTILITY SCRAP
UNION MO 63084

Styles "R-2", "P-5", "TR-2" and "TP-5" Color
Light Signals for Bridge and Bracket
Post Mounting

**ZCG UTILITY SCRAP
UNION MO 63084**

UNION SWITCH & SIGNAL CO.

PLATE **B-2509**

Styles "R-2", "P-5", "TR-2" and "TP-5" Color Light Signals for Bridge and Bracket Post Mounting

For general information and ordering instructions see Plate B-2500.
If Mounting Fittings are desired, orders should be accompanied with dimensioned plan or sketch of Bridge or Main Bracket Post.

Order by Plate, Piece, Reference and Abbreviated
Description Given in Heavy Face Type Only

1-Unit Style....., Color Light Signal Ref....., Plate B-2509, with Lamp Bulbs Ref....., Plate B-2571, "Z" Dimension..... and Pipe Post Ref....., (Orders should Specify "Z" Dimension, Lamp Bulbs Desired by Referring to Plate B-2571 and Pipe Post Desired by Referring to Ref. 4 or 4a) (without Mounting Bolts and Ladder) Dwg. B-10325.

Piece	Ref.	Style	Unit Ref..... Plate B-2517	Approx. Minimum "Z" Dimension
	A	"R-2" 3-Color	B	3'- 0"
	Aa	"R-2" 2-Color	A	3'- 0"
	B	"P-5" 3-Color	E	3'- 6"
	Ba	"P-5" 2-Color	D	3'- 6"
	C	"TR-2" 3-Color	C	3'- 4"
	D	"TP-5" 3-Color	F	3'-10"

2- Unit Style....., Color Light Signal Ref....., Plate B-2509 with Lamp Bulbs Ref....., Plate B-2571, "Z" Dimension..... Pipe Post Ref..... and Ladder Ref. 8 (Orders should Specify "Z" Dimension, Lamp Bulbs Desired by Referring to Plate B-2571 and Pipe Post Desired by Referring to Ref. 4 or 4a) (without Mounting Bolts) Dwg. B-10325.

Piece	Ref.	Style	Unit Ref..... Plate B-2517		Approx. Minimum "Z" Dimension
			Upper Unit	Lower Unit	
	E	"R-2" 3-Color	B	B	3'-0"
	Ea	"R-2" 2-Color	A	A	3'-0"
	Eb	"P-5" 3-Color	E	Eb	4'-2"
	Ec	"P-5" 2-Color	D	Db	4'-2"
	Ed	"TR-2" 3-Color	C	C	3'-4"
	Ee	"TP-5" 3-Color	F	Fa	4'-6"

Styles "R-2", "P-5", "TR-2" and "TP-5" Color Light Signals for Bridge and Bracket Post Mounting

**ZCG UTILITY SCRAP
UNION MO 63084**

(Continued)

Order by Plate, Piece, Reference and Abbreviated
Description Given in Heavy Face Type Only

3-Unit Style....., Color Light Signal Ref....., Plate B-2509 with Lamp Bulbs Ref....., Plate B-2571, "Z" Dimension....., Pipe Post Ref..... and Ladder Ref. 9 (Orders should Specify "Z" Dimension, Lamp Bulbs desired by Referring to Plate B-2571 and Pipe Post Desired by Referring to Ref. 4 or 4a) (without Mounting Bolts) Dwg. B-10325.

Piece	Ref.	Style	Unit Ref....., Plate B-2517			Approx. Minimum "Z" Dimension
			Top Unit	Center Unit	Bottom Unit	
F		"R-2" 3-Color	B	B	B	3'-0"
Fa		"R-2" 2-Color	A	A	A	3'-0"
Fb		"P-5" 3-Color	E	Eb	Eb	4'-2"
Fc		"P-5" 2-Color	D	Db	Db	4'-2"
Fd		"TR-2" 3-Color	C	C	C	3'-4"
Fe		"TP-5" 3-Color	F	Fa	Fa	4'-6"

1-Unit Style....., Color Light Signal Ref....., Plate B-2509 with Ladder Ref. 10, Pipe Post Ref. 5, Lamp Bulbs Ref....., Plate B-2571, "T" Dim....., "U" Dim....., "V" Dim....., and Mounting Bolts Ref. 17, Long. For Bridge Mounting. (Orders should Specify "T", "U", "V" Dimensions, Length of Mounting Bolts and Lamp Bulbs Desired by Referring to Plate B-2571) Dwg. B-10325.

Piece	Ref.	Style	Unit Ref..... Plate B-2517	Approx. Minimum "U" Dimension
G		"R-2" 3-Color	B	3'-11"
Ga		"R-2" 2-Color	A	2'-11"
Gb		"TR-2" 3-Color	C	2'-11"

Styles "R-2", "P-5", "TR-2" and "TP-5" Color Light Signals for Bridge and Bracket Post Mounting

**ZCG UTILITY SCRAP
UNION MO 63084**

(Continued)

Order by Plate, Piece, Reference and Abbreviated
Description Given in Heavy Face Type Only

2-Unit Style..... Color Light Signal Ref....., Plate B-2509 with Ladder Ref. 11, Pipe Post Ref. 5, Lamp Bulbs Ref....., Plate B-2571, "S" Dim....., "T" Dim....., "U" Dim....., "V" Dim....., and Mounting Bolts Ref. 17, Long. For Bridge Mounting. (Orders should Specify "S", "T", "U", "V" Dimensions, Length of Mounting Bolts and Lamp Bulbs Desired by Referring to Plate B-2571) Dwg. B-10325.						
Piece	Ref.	Style	Unit Ref..... Plate B-2517		Approx. Minimum "U" Dimension	
			Upper Unit	Lower Unit		
	H	"R-2" 3-Color	B	B	3'-11"	
	Ha	"R-2" 2-Color	A	A	2'-11"	
	Hb	"TR-2" 3-Color	C	C	2'-11"	
3-Unit Style..... Color Light Signal Ref....., Plate B-2509 with Ladder Ref. 12, Pipe Post Ref. 5, Lamp Bulbs Ref....., Plate B-2571, "R" Dim....., "S" Dim....., "T" Dim....., "U" Dim....., "V" Dim....., and Mounting Bolts Ref. 17, Long. For Bridge Mounting. (Orders should Specify "R", "S", "T", "U", "V" Dimensions, Length of Mounting Bolts and Lamp Bulbs Desired by Referring to Plate B-2571) Dwg. B-10325.						
Piece	Ref.	Style	Unit Ref..... Plate B-2517			Approx. Minimum "U" Dimension
			Upper Un.	Center Un.	Bottom Unit	
	J	"R-2" 3-Color	B	B	B	3'-11"
	Ja	"R-2" 2-Color	A	A	A	2'-11"
	Jb	"TR-2" 3-Color	C	C	C	2'-11"
Piece	Ref.	Description				Drawing Reference
	2	Style..... Color Light Signal Unit (When ordering "R-2", "P-5", "TR-2" or "TP-5" Two or Three-Color Unit, refer to Plate B-2517).....				B-10325-
	3	One-Color Marker Light (When ordering refer to Plate B-2514).				

Styles "R-2", "P-5", "TR-2" and "TP-5" Color Light Signals for Bridge and Bracket Post Mounting

(Continued)

**ZCG UTILITY SCRAP
UNION MO 63084**

Order by Plate, Piece, Reference and Abbreviated
Description Given in Heavy Face Type Only

Piece	Ref.	Description	Drawing Reference
	4	Pipe Post, 5" Pipe with Base Casting Ref. 6 (Orders should specify Signal with which Pipe Post is to be used by referring to Refs. A to Fe).....	B-9893-
	4a	Pipe Post, 5" Pipe with Base Ref. 7 (Orders should specify Signal with which Pipe Post is to be used by referring to Refs. A to Fe).....	B-9893-
	5	Pipe Post, 5" Pipe with Clamp Socket Ref. 7 and Cap Ref. 19 (Orders should specify Signal with which Pipe Post is to be used by referring to Refs. G to Jb).....	B-9893-
61092	6	Base Casting (A.A.R.) for 5" Pipe (For Refs. A to Fe).....	C-7583-1
170595	7	Clamp Socket Complete for 5" Pipe (For Refs. A to Jb).....	C-6425-3
	8	Ladder with Platform for Two-Unit Bridge Signals Refs. E to Ee (When ordering specify "Z" dimension of Signal so proper ladder can be furnished) (For details refer to Plate B-2586).....	B-10313-
	9	Ladder with Platforms for Three-Unit Bridge Signals Refs. F to Fe (When ordering specify "Z" dimension of Signal so proper ladder can be furnished) (For details refer to Plate B-2586).....	B-10313-
	10	Ladder with Platform for One-Unit Bridge Signals Refs. G to Gb (When ordering specify "U" dimension of Signal so proper ladder can be furnished) (For details refer to Plate B-2586).....	B-10313-
	11	Ladder with Platform and Stay for Two-Unit Bridge Signals Refs. H to Hb (When ordering specify "U" dimension of Signal so proper ladder can be furnished) (For details refer to Plate B-2586).....	B-10313-
	12	Ladder with Platforms and Stay for Three-Unit Bridge Signals Refs. J to Jb (When ordering specify "R" and "U" dimensions of Signal so proper ladder can be furnished) (For details refer to Plate B-2586)	B-10313-
150818	13	Pinnacle with Bolt and Nut for 5" Pipe or Casing..	B-8121-17

Styles "R-2", "P-5", "TR-2" and "TP-5" Color Light Signals for Bridge and Bracket Post Mounting

ZCG UTILITY SCRAP
UNION MO 63084

(Continued)

Order by Plate, Piece, Reference and Abbreviated
Description Given in Heavy Face Type Only

Piece	Ref.	Description	Drawing Reference
	14	Hook Bolt, 1" with Hex. Nut (Cad. Pl.) and 1" Std. Plate Washer (Cad. Pl.) (Orders should specify "W" dimension) For attaching Color Light Signal to Signal Bridge.....	7913-369
	14a	Hook Bolt, 1" with Hex. Nut (Cad. Pl.) and 1" Pl. S. Lock Washer ($\frac{1}{4}$ "x $\frac{1}{4}$ ") (Cad. Pl.) (Orders should specify "W" dimension) For attaching Color Light Signal to Signal Bridge.....	7913-369
	15	Hook Bolt, $\frac{3}{4}$ " with Hex. Nut (Cad. Pl.) and $\frac{3}{4}$ " Std. Plate Washer (Cad. Pl.) (Orders should specify "W" dimension) For attaching Color Light Signal to Signal Bridge.....	7913-319
	15a	Hook Bolt, $\frac{3}{4}$ " with Hex. Nut (Cad. Pl.) and $\frac{3}{4}$ " Pl. S. Lock Washer ($\frac{3}{16}$ "x $\frac{3}{16}$ ") (Cad. Pl.) (Orders should specify "W" dimension) For attaching Color Light Signal to Signal Bridge.....	7913-319
	16	Bolt, 1" Sq. Hd. (Cad. Pl.) with Hex. Nut (Cad. Pl.) and 1" Std. Plate Washer (Cad. Pl.) (Orders should specify "W" dimension) For attaching Color Light Signal to Signal Bridge.	
	17	Bolt, 1" Sq. Hd. (Cad. Pl.) with Hex. Nut (Cad. Pl.) and 1" Pl. S. Lock Washer ($\frac{1}{2}$ "x $\frac{1}{2}$ ") (Cad. Pl.) (Orders should specify length desired).	
60096	18	Half Socket for Ref. 7.....	C-6425-3
	19	Cap with three $\frac{1}{2}$ "-13x $\frac{3}{4}$ " Hex. Hd. S. Tap Bolts (Cad. Pl.).....	B-8121-18
152130	19a	Cap Only.....	B-8121-18
	20	Bolt, $\frac{5}{8}$ "x8 $\frac{3}{4}$ " Sq. Hd. S. with $\frac{5}{8}$ " Hex. Nut for Ref. 7.	
	21	Bolt, $\frac{3}{4}$ "x7" Sq. Hd. S. with $\frac{3}{4}$ " Hex. Nut for Ref. 7.	
69514	22	Cable Outlet with Gasket Ref. 22a (For bringing external wires into Pole).....	B-10342-31
69530	22a	Gasket for Ref. 22.....	8078-1340

Styles "R-2", "P-5", "TR-2" and "TP-5" Color Light Signals for Bridge and Bracket Post Mounting

(Continued)

Order by Plate, Piece, Reference and Abbreviated
Description Given in Heavy Face Type Only

Piece	Ref.	Description	Drawing Reference
69518	23	"U" Bolt, 1/2" with Hex. Nuts (Cad. Pl.) for attaching Ref. 22 to 5" Pipe.....	8782-151
74551	24	Panel Box Connector, 2" M. I. for bringing 2" S. S. Flexible Conduit into Pole.....	B-10342-17
	24a	Panel Box Connector, 1 1/4" M. I. for bringing 1 1/4" S. S. Flexible Conduit into Pole.....	B-10342-

**ZCG UTILITY SCRAP
UNION MO 63084**