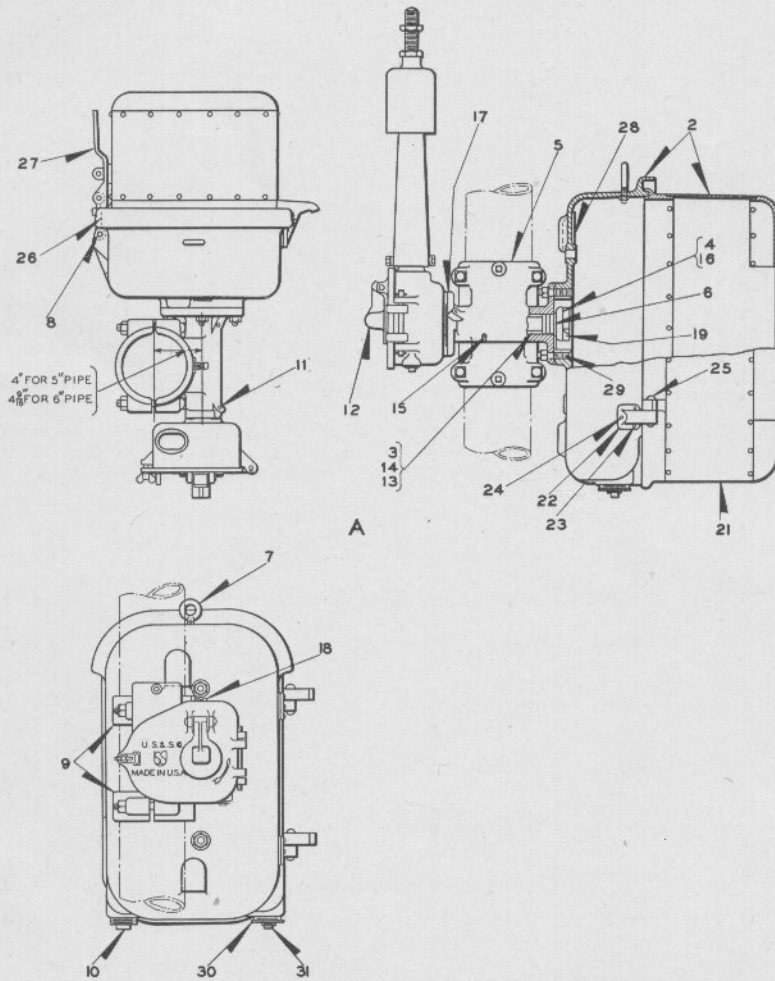


UNION SWITCH & SIGNAL CO.

Zachary C. Gillihan 2008



STYLE "T-2" MECHANISM WITH MECHANISM CASE,  
BEARING, (FOR 5" AND 6" PIPE) AND HAND  
OPERATING MECHANISM

UNION SWITCH & SIGNAL CO.

STYLE "T-2" MECHANISM WITH MECHANISM CASE,  
BEARING, (FOR 5" AND 6" PIPE) AND HAND  
OPERATING MECHANISM

Zachary C. Gillihan 2008

Order by Plate, Piece, Reference and Abbreviated Description Given in  
Heavy Face Type Only

Piece	Ref.	Description	Drawing Reference
159807	A	Style "T-2" D.C. L.V. 2-Position 0° to 85° L.H. L.Q. Mechanism Ref. 2 Plate B-1515 (Motor driven in both directions) with Case, Bearing, and Hand Operating Mechanism (For 6" Pipe Post).....	B-10391-35
	Aa	Style "T-2" D.C. L.V. 2-Position 0° to 85° L.H. L.Q. Mechanism Ref. 2 Plate B-1515 (Motor driven in both directions) with Case, Bearing, and Hand Operating Mechanism (For 5" Pipe Post).....	B-10391-35
	Ab	Style "T-2" D.C. L.V. 2-Position 0° to 90° L.H. U.Q. Mechanism Ref. 2a, Plate B-1515 (Motor driven in both directions) with Case, Bearing and Hand Operating Mechanism (For 6" Pipe Post).....	B-10391-35
	Ac	Style "T-2" D.C. L.V. 2-Position 0° to 90° L.H. U.Q. Mechanism Ref. 2a, Plate B-1515 (Motor driven in both directions) with Case, Bearing and Hand Operating Mechanism (For 5" Pipe Post).....	B-10391-35
	160197	2	Mechanism Case with Bearing and Hand Operating Mechanism for 6" Pipe for operating L.H. L.Q. or L.H. U.Q. "T-2" Smashboard Signal.....
2a		Mechanism Case with Bearing and Hand Operating Mechanism for 5" Pipe for operating L.H. U.Q. "T-2" Smashboard Signal.....	C-7581-27
75961	2b	Mechanism Case with Cover (Without Bearing and Hand Operating mechanism) for Refs. 2 and 2a...	C-7581-14
43284	2c	Case only for Refs. 2, 2a and 2b.....	C-8079-2
160429	3	Shaft with $\frac{5}{16}$ "x1 $\frac{1}{2}$ " S. Cotter for Ref. A.....	8026-589
	3a	Shaft with $\frac{5}{16}$ "x1 $\frac{1}{2}$ " S. Cotter for Ref. Aa.....	8026-589
29968	4	Coupling.....	C-7554-8

UNION SWITCH & SIGNAL CO.

STYLE "T-2" MECHANISM WITH MECHANISM CASE,  
BEARING, (FOR 5" AND 6" PIPE) AND HAND  
OPERATING MECHANISM

(Continued)

Zachary C. Gillihan 2008

Order by Plate, Piece, Reference and Abbreviated Description Given in  
Heavy Face Type Only

Piece	Ref.	Description	Drawing Reference
145821	5	Bearing with four Bolts Ref. 5c for Ref. A.....	C-9162-5
142400	5a	Bearing with four Bolts Ref. 5b for Ref. Aa.....	C-9162-4
	5b	Bolt, 5/8"x5 1/2" Sq. Hd. with 5/8" Hex. Nut for Ref. 5a	
	5c	Bolt, 5/8"x6 1/4" Sq. Hd. with 5/8" Hex. Nut for Ref. 5.	
29748	6	Journal.....	8093-52
31092	7	Eye Bolt with 1/2" Hex. Nut.....	8034-104
47304	8	Pin.....	B-10207-1
38070	9	Cap for Ref. 5.....	B-9932-6
28058	9a	Cap for Ref. 5a.....	B-6821-20
	10	Pipe Plug, 2" C. I.	
	11	Alemite Fitting, 1/4" Pipe Thread.	
164329	12	Hand Operating Mechanism (Driven by motor in both directions) (For details refer to Plate B-1540)	D-2360-2
142408	13	Journal.....	8093-101
56724	14	Washer.....	7826-180
	15	Pipe Plug, 1/4" C. I.	
152588	16	Pin for Ref. 4.....	8097-643
25705	17	Gasket, used between Hand Operating Mechanism Box and Bearing.....	8078-479
	18	Set Screw, 5/8"x1 1/2" Cupped Pt. I.	
43286	19	Shaft Coupling.....	C-7554-11

UNION SWITCH & SIGNAL CO.

STYLE "T-2" MECHANISM WITH MECHANISM CASE,  
BEARING, (FOR 5" AND 6" PIPE) AND HAND  
OPERATING MECHANISM

(Continued)

Zachary C. Gillihan 2008

Order by Plate, Piece, Reference and Abbreviated Description Given in  
Heavy Face Type Only

Piece	Ref.	Description	Drawing Reference
	20	Machine Bolt, $\frac{1}{2}$ "x $1\frac{3}{8}$ " Hex. Hd. S. with $\frac{1}{2}$ " Plain S. Lock Washer ( $\frac{3}{16}$ "x $\frac{3}{32}$ " ) (Not shown) for fastening Ref. 12 to Bearing.	
68299	21	Cover for Ref. 2.....	C-8079-5
44550	22	Hinge Lug.....	C-8079-3
	23	Rivet, $\frac{1}{4}$ "x $1\frac{1}{8}$ " Rd. Hd. I. for fastening Ref. 22 to Ref. 2.	
	24	Rivet, $\frac{1}{4}$ "x $1\frac{3}{8}$ " Rd. Hd. I. for fastening Ref. 22 to Ref. 2.	
50679	25	Pin for attaching Ref. 21 to Ref. 2.....	B-10207-1
46796	26	Hasp Link.....	C-8079-6
46795	27	Hasp.....	8299-56
21918	28	Ventilator.....	B-7318-5
21919	28a	Screen.....	B-7318-5
	28b	Machine Screen No. 10-30x $\frac{3}{8}$ " Rd. Hd. S. for fastening Refs. 28 and 28a to Ref. 2..	
60767	29	Stud with $\frac{5}{8}$ " Hex. Nut.....	8071-123
	30	Reducing Bushing, 2"x $\frac{3}{4}$ ".	
	31	Pipe Plug, $\frac{3}{4}$ " C. I.	