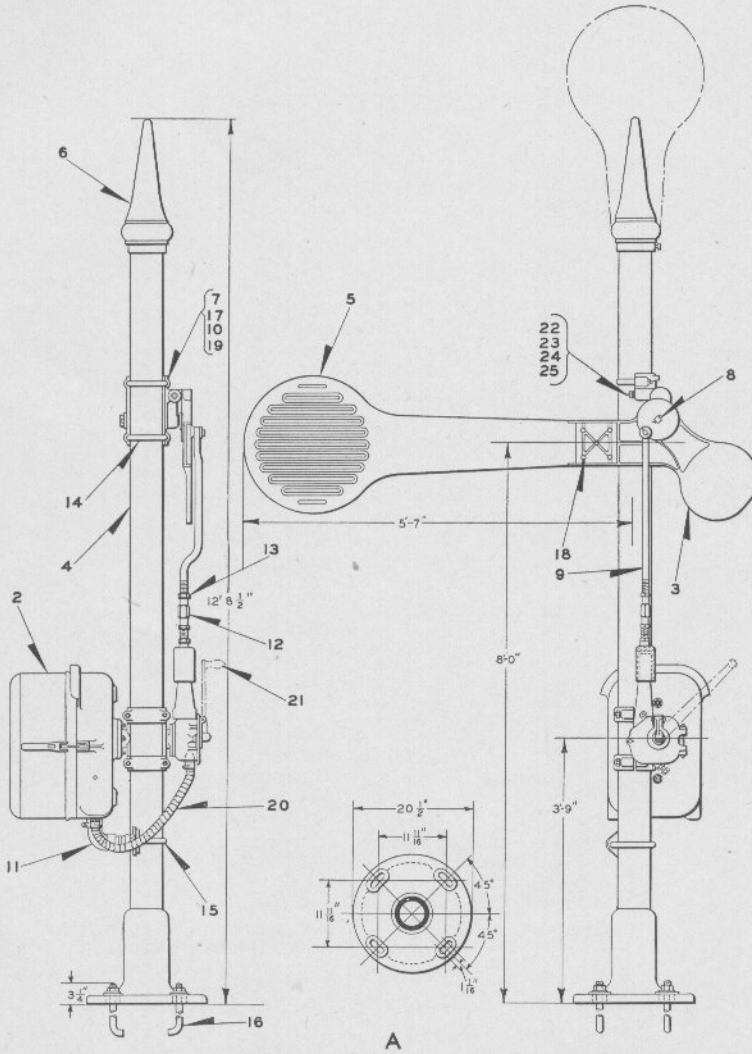


UNION SWITCH & SIGNAL CO.

Zachary C. Gillihan 2008



ONE ARM, 2-POSITION 0° TO 90° L. H. U. Q.
D. C. L. V. STYLE "T-2" SMASHBOARD SIGNAL

UNION SWITCH & SIGNAL CO.

ONE ARM, 2-POSITION 0° TO 90° L. H. U. Q.
 D. C. L. V. STYLE "T-2" SMASHBOARD SIGNAL

Zachary C. Gillihan 2008

Order by Plate, Piece, Reference and Abbreviated Description Given in
 Heavy Face Type Only

Piece	Ref.	Description	Drawing Reference
	A	One Arm, 2-Position (0° to 90°) Left Hand Upper Quadrant D.C. L.V. Style "T-2" Smashboard Signal (Motor driven in both directions and arranged for emergency hand operation) complete with 5" Pipe Post and Base (Hand Lever Ref. 21 should be ordered separately).....	C-9165-
	Aa	Necessary Material for applying One Arm, 2-Position (0° to 90°) Left Hand Upper Quadrant D.C. L.V. Style "T-2" Smashboard Signal (Motor driven in both directions and arranged for emergency hand operation) to existing 5" Pipe Post....	C-9165-
	2	2-Position, 0° to 90° Left Hand Upper Quadrant, Style "T-2" Signal Mechanism and Case for 5" Pipe complete for Refs. A and Aa (For details refer to Plate B-1510).....	B-10391-35
142482	3	Left Hand Upper Quadrant Semaphore Casting with Stud Washer and $\frac{3}{16}$ "x1 $\frac{1}{2}$ " Cotters.....	C-7298-104
860	3a	Stud with $\frac{3}{16}$ "x1 $\frac{1}{2}$ " Cotter.....	8301-1
25063	3b	Washer.....	7826-11
146570	4	5" Pipe Post with Base, 11' 2 $\frac{1}{2}$ " long from bottom of base to top of Post.....	B-9893-143
119407	5	Smashboard Blade 5' 4" long, with priming coat of paint only, (If blade is to be painted in color orders should specify color desired).....	5672-389
68566	6	Pinnacle with Set Screw.....	B-8121-11
142747	7	Semaphore Bearing with Spring Stop Ref. 22.....	B-6821-46
73823	8	Semaphore Shaft with Cotter Pin.....	8026-201
142478	9	Up and Down Rod 2' 6" long.....	B-7722-86

UNION SWITCH & SIGNAL CO.

ONE ARM, 2-POSITION 0° TO 90° L. H. U. Q.
 D. C. L. V. STYLE "T-2" SMASHBOARD SIGNAL
 (Continued)

Zachary C. Gillihan 2008

Order by Plate, Piece, Reference and Abbreviated Description Given in
 Heavy Face Type Only

Piece	Ref.	Description	Drawing Reference
61091	10	Cap. used with Ref. 7.....	B-9649-2
138049	11	Cable Outlet.....	B-10342-50
1241	12	1" Turnbuckle.....	8313-5
53396	13	1" Hex. Nut.....	8265-9
43128	14	3/4" "U" Bolt with two 3/4" Hex. Nuts.....	8782-63
69518	15	1/2" "U" Bolt with two 1/2" Hex. Nuts.....	8782-151
10276	16	Foundation Bolt 1"x3' 0" with 1" Hex. Nut and 1" Plate Washer.....	7913-54
30069	17	Gasket for Ref. 7.....	8078-500
	18	Bolt, 3/8"x2" Sq. Hd. with 3/8" Hex. Nut for fasten- ing Ref. 5 to Ref. 3.	
	19	Tap Bolt, 1/2"x1" Hex. Hd. with 1/2" Plain S. Lock Washer (3/16"x3/32").	
	20	3/4" D.S. Flexible S. Conduit 1-3/16" I.D. x 1.148" O.D. 2' 8" long with two 3/4" M.I. Galvanized Box Con- nectors.	
142406	21	Hand Lever.....	C-9162-1
	22	Spring Stop, complete with Bolt, Collar and Coil Spring.	
	23	Bolt, 5/8"x5" Sq. Hd. with Washers, Hex. Nut and 1/16"x1 1/8" Cotter.....	8277-
33550	23a	Bolt, 5/8"x5" Sq. Hd. only for Ref. 23.....	8277-46
42488	23b	Washer for Ref. 23.....	7824-1
25452	24	Collar for Ref. 23.....	8072-240
44598	25	Coil Spring.....	7770-258