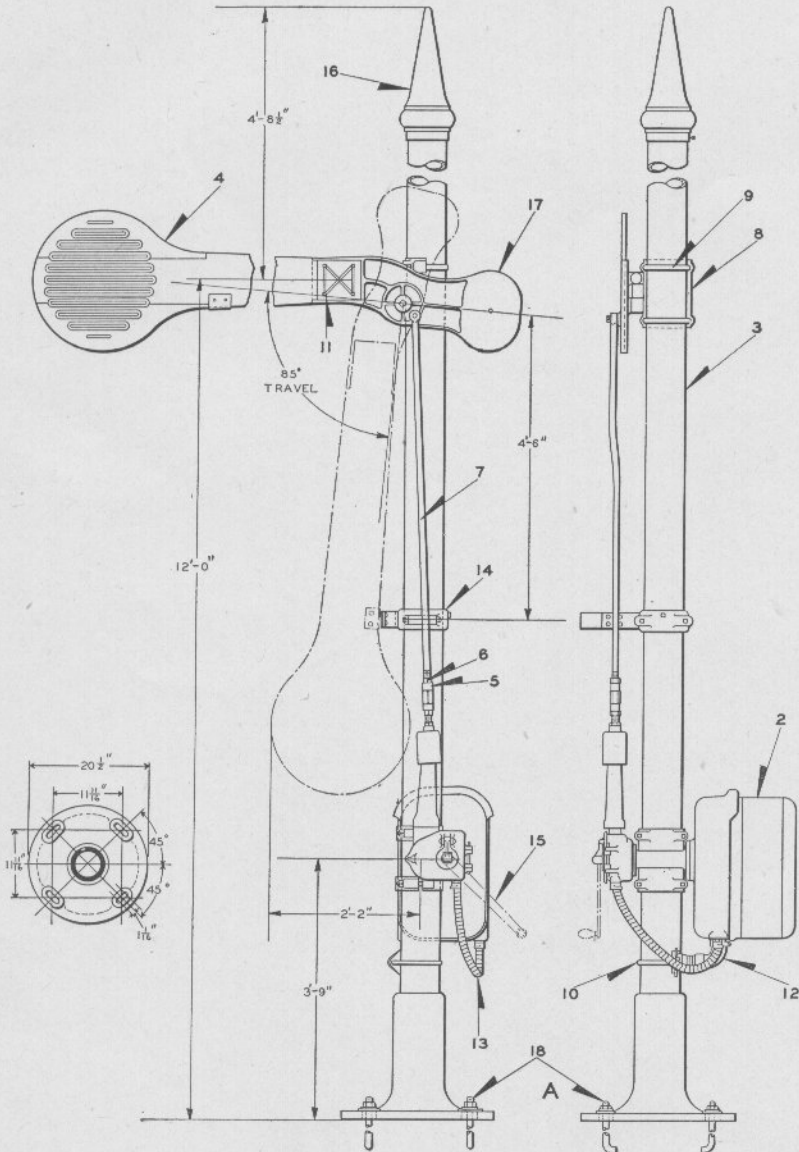


UNION SWITCH & SIGNAL CO.

Zachary C. Gillihan 2008



ONE ARM, 2-POSITION 0° TO 85° L. H. L. Q.
"T-2" SMASHBOARD SIGNAL

UNION SWITCH & SIGNAL CO.

ONE ARM, 2-POSITION 0° TO 85° L. H. L. Q.
 "T-2" SMASHBOARD SIGNAL

Zachary C. Gillihan 2008

Order by Plate, Piece, Reference and Abbreviated Description Given in
 Heavy Face Type Only

Piece	Ref.	Description	Drawing Reference
	A	One Arm, 2-Position 0° to 85°, L.H.L.Q. "T-2" D.C. Smashboard Signal (Motor driven in both directions and arranged for emergency hand operation) With 6" Pipe Post and Base (Hand Lever Ref. 15 should be ordered separately)	C-9165-4
	Aa	Necessary Material for applying One Arm, 2-Position 0° to 85° L.H. L.Q. "T-2" D.C. Smashboard Signal (Motor driven in both directions and arranged for emergency hand operation) to existing 6" Pipe Post (Inc. 1-2, 1-4, 1-5, 3-6, 1-7, 1-8, 2-9, 1-10, 4-11, 1-12, 1-13, 1-14 and 1-17)	C-9165-4
159807	2	2-Position, 0° to 85° L.H. L.Q. Style "T-2" Signal Mechanism and Case for 6" Pipe Post for Ref. A and Aa (For details refer to Plate B-1510)	B-10391-35
	3	6" Pipe Post with Base, 15' 2½" from bottom of base to Top of Post	B-9893
155158	4	Smashboard Blade 6' 7" long with one priming coat of paint only (If blade is to be painted in color orders should so state specifying color desired)	5672-400
1241	5	Turnbuckle	8313-5
53396	6	1" Hex. Nut	8265-9
160262	7	Up and Down Rod 5' 8" long	B-7722-39
155202	8	Semaphore Bearing for 6" Pipe Post complete with Shaft and Cap	B-9932-24
155375	8a	Semaphore Bearing Only	B-9932-10
155186	8b	Semaphore Shaft	8026-588
43129	9	¾" "U" Bolt with two ¾" Hex. Nuts and two ¾" Plain S. Lock Washers (⅜" x ⅜") for Ref. 8	8782-65

UNION SWITCH & SIGNAL CO.

ONE ARM, 2-POSITION 0° TO 85° L. H. L. Q.
 "T-2" SMASHBOARD SIGNAL

(Continued)

Zachary C. Gillihan 2008

Order by Plate, Piece, Reference and Abbreviated Description Given in
 Heavy Face Type Only

Piece	Ref.	Description	Drawing Reference
60389	10	1/2" "U" Bolt with two 1/2" Hex. Nuts for Ref. 12. . . .	8782-109
	11	Bolt 3/8"x2" Sq. Hd. with 3/8" Hex. Nut for fastening Ref. 4 to Ref. 17.	
146058	12	Cable Outlet.	B-10342-50
	13	3/4" D.S. Flexible S. Conduit 4 3/8" I.D. x 1.148" O.D. 2' 8" long with two 3/4" M. I. Galvanized Box Connectors.	
155388	14	Stop with two bolts Ref. 14a.	B-10326-4
	14a	Bolt, 3/4"x6 1/2" Sq. Hd. with 3/4" Hex. Nut for fastening Ref. 14 to Pole.	
142406	15	Hand Lever.	C-9162-1
	16	Pinnacle for 6" Pipe Post.	B-8121
159375	17	Left Hand L.Q. Semaphore Casting with Stud, Washer and 3/16"x1 1/2" Cotter Pin.	C-9231-3
59615	17a	Stud with 3/16"x1 1/2" Cotter.	8301-46
25063	17b	Washer.	7826-11
10276	18	Foundation Bolt, 1"x3' 0" with 1" Hex. Nut and 1" Plate Washer.	7913-54