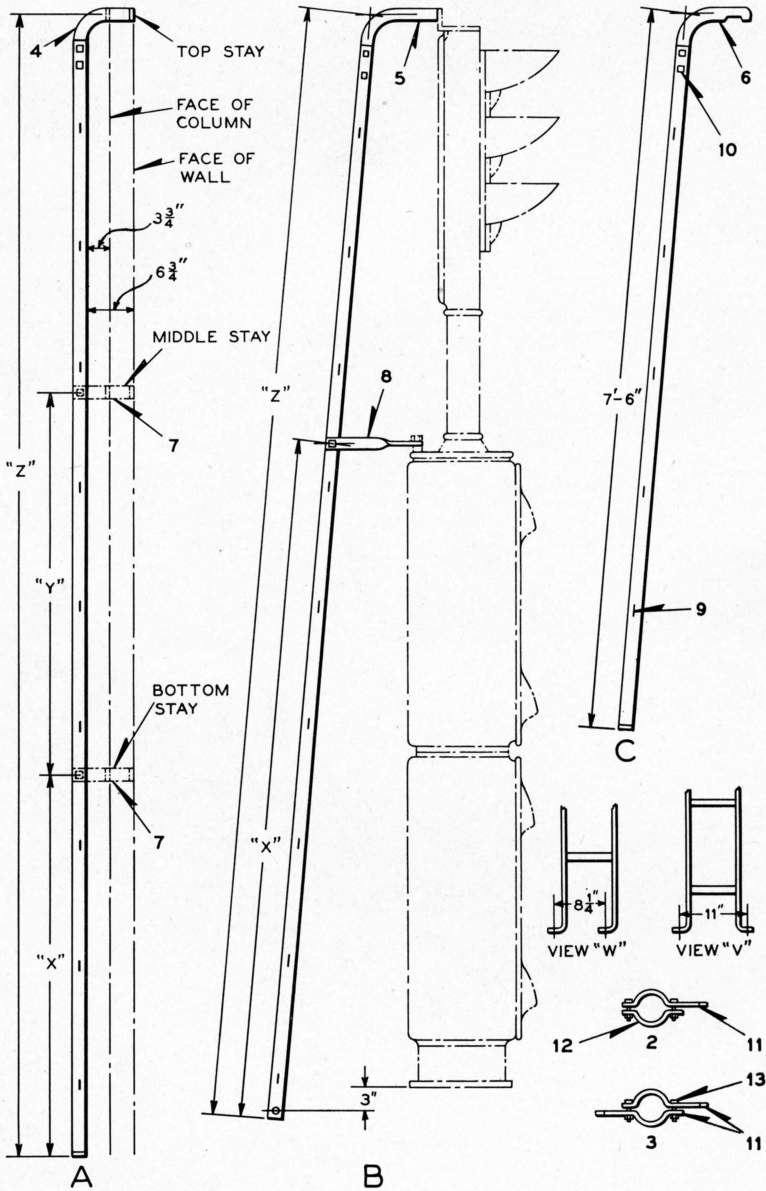


UNION SWITCH & SIGNAL CO.



LADDERS FOR SUBWAY COLOR LIGHT SIGNALS

UNION SWITCH & SIGNAL CO.

SUBWAY COLOR LIGHT SIGNALS

DETAIL PARTS

LADDERS

Order by Plate, Piece, Reference and Abbreviated Description Given in Heavy Face Type Only

Piece	Ref.	Description	Drawing Reference
182200	A	Straight Ladder with Top Stay Only, "Z" dimension 9'-3", foot per View "V." For fastening to Column	B-10313-511
182201	Aa	Straight Ladder with Top Stay Only, "Z" dimension 9'-3", foot per View "V." For fastening to Wall ..	B-10313-511
144523	Ab	Straight Ladder with Top and Bottom Stays, "X" dimension 4'-7", "Z" dimension 9'-3", foot per View "W." For fastening to Column .....	B-10313-419
144525	Ac	Straight Ladder with Top and Bottom Stays, "X" dimension 4'-7", "Z" dimension 9'-3", foot per View "W." For fastening to Wall .....	B-10313-419
182204	Ad	Straight Ladder with Top Stay Only, "Z" dimension 12'-0", foot per View "V." For fastening to Column	B-10313-511
182205	Ae	Straight Ladder with Top Stay Only, "Z" dimension 12'-0", foot per View "V." For fastening to Wall ..	B-10313-511
144518	Af	Straight Ladder with Top, Middle and Bottom Stays, "X" dimension 4'-0", "Y" dimension 4'-0", "Z" dimension 12'-0", foot per View "W." For fastening to Column .....	B-10313-419
144520	Ag	Straight Ladder with Top, Middle and Bottom Stays, "X" dimension 4'-0", "Y" dimension 4'-0", "Z" dimension 12'-0", foot per View "W." For fastening to Wall .....	B-10313-419
179312	B	Sloping Ladder with Top and Bottom Stays, "X" dimension 7'-1 $\frac{1}{2}$ ", "Z" dimension 11'-8 $\frac{3}{8}$ " (Without foot) .....	B-10313-485
160511	Ba	Sloping Ladder with Top and Bottom Stays, "X" dimension 7'-1 $\frac{3}{4}$ ", "Z" dimension 14'-4" (Without foot) .....	B-10313-459

UNION SWITCH & SIGNAL CO.

SUBWAY COLOR LIGHT SIGNALS

(Continued)

DETAIL PARTS

LADDERS

Order by Plate, Piece, Reference and Abbreviated Description Given in Heavy Face Type Only

Piece	Ref.	Description	Drawing Reference
194329	C	Portable Ladder with foot .....	B-10313-525
179391	2	Single Step for 3" Pipe .....	12536-5
179510	3	Double Step for 3" Pipe .....	12536-5
144512	4	R. H. Top Stay for Refs. A, Ab, Ad and Af .....	B-7501-115
144513	4a	L. H. Top Stay for Refs. A, Ab, Ad and Af .....	B-7501-115
144514	4b	R. H. Top Stay for Refs. Aa, Ac, Ae and Ag .....	B-7501-115
144515	4c	L. H. Top Stay for Refs. Aa, Ac, Ae and Ag .....	B-7501-115
20721	5	R. H. Top Stay for Refs. B and Ba .....	B-7501-7
77481	5a	L. H. Top Stay for Refs. B and Ba .....	B-7501-7
194305	6	R. H. Top Stay for Ref. C .....	B-7501-159
194362	6a	L. H. Top Stay for Ref. C .....	B-7501-159
144510	7	Stay for Refs. Ab and Af .....	B-7501-91
144511	7a	Stay for Refs. Ac and Ag .....	B-7501-91
179313	8	Stay for Ref. B .....	B-7501-146
35570	8a	Stay for Ref. Ba .....	B-7501-21
139	9	Rung .....	B-8365-1
	10	Bolt, 1/2"x1" Sq. Hd. with 1/2" Hex. Nut	
119645	11	Step Only .....	12536-5
119644	12	Cap .....	12536-6
	13	Bolt, 1/2"x2" Sq. Hd. with 1/2" Hex. Nut (Cad. Pl.)	