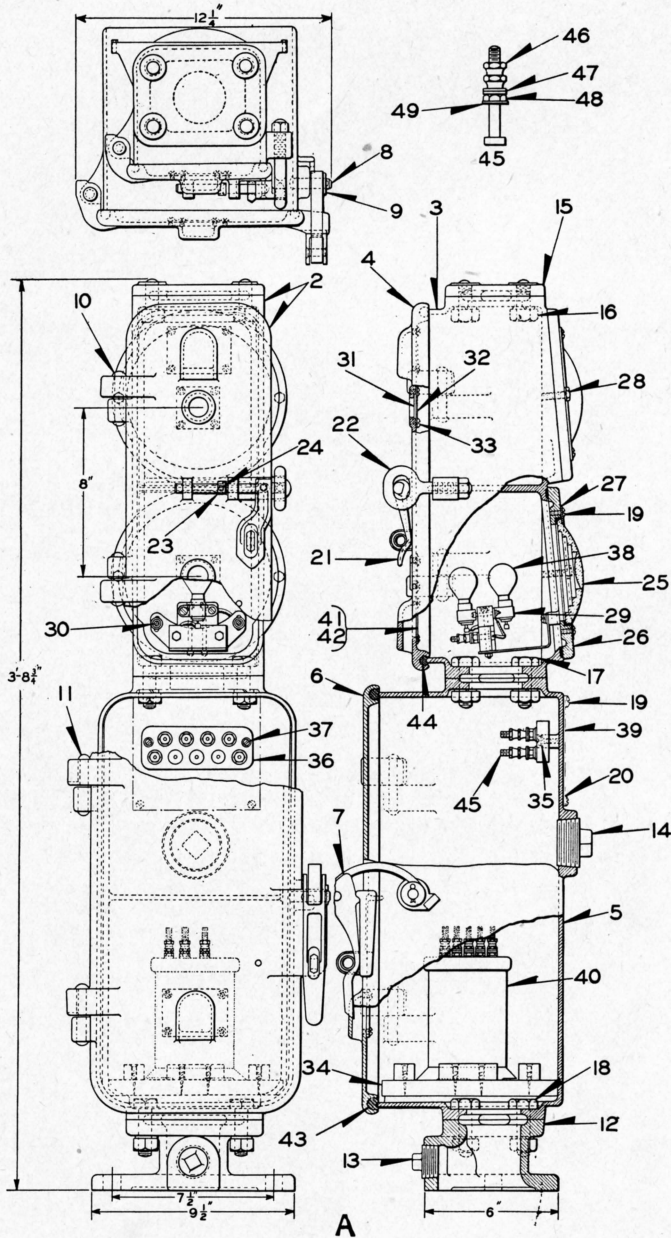


UNION SWITCH & SIGNAL CO.



TWO-COLOR SUBWAY LIGHT DWARF SIGNAL WITH RELAY AND CASE  
(5" SINGLE LENS)

UNION SWITCH & SIGNAL CO.

TWO-COLOR SUBWAY LIGHT DWARF SIGNAL WITH RELAY AND CASE  
(5" SINGLE LENS)

Order by Plate, Piece, Reference and Abbreviated Description Given in  
Heavy Face Type Only

Piece	Ref.	Description	Drawing Reference
159254	A	Two-Color Subway Light Dwarf Signal with 5" Single Lens, Lamp Bulbs Ref. 38, Relay and Terminal Case, Number Plate and A. N. L.-2 Relay (Orders should specify Relay desired by referring to Plate E-1090 and numbering required on Number Plate).....	C-6769-38
159174	Aa	Two-Color Subway Light Dwarf Signal with 5" Single Lens, Top Light Yellow, Bottom Light Red, Upper Back Light White, and Lower Back Light Red with Relay and Terminal Case and Number Plate (Without Lamp Bulbs and Relay) (Orders should specify numbering required on Number Plates) ..	C-6769-38
164294	2	Case and Door complete.....	C-6769-30
158419	3	Upper Case.....	C-9060-18
158493	4	Door with Ventilator Flax Packing and two Pins Ref. 10.....	C-9060-19
159861	5	Lower Case.....	C-9060-22
159863	6	Lower Door with Ventilator Flax Packing and two Pins Ref. 11.....	C-9060-23
163359	7	Hasp.....	8299-116
163590	8	Stud with Washer Ref. 9 and one 1/8" x 3/4" S. Cotter (Cad. Pl.).....	8115-118
25054	9	Washer.....	7826-1
50679	10	Pin.....	B-10207-1
49635	11	Pin.....	B-10207-1
158574	12	Base.....	C-9060-20

UNION SWITCH & SIGNAL CO.

TWO-COLOR SUBWAY LIGHT DWARF SIGNAL WITH RELAY AND CASE  
 (5" SINGLE LENS)  
 (Continued)

Order by Plate, Piece, Reference and Abbreviated Description Given in  
 Heavy Face Type Only

Piece	Ref.	Description	Drawing Reference
	13	Pipe Plug, 1 1/4" C. I.	
	14	Pipe Plug, 2" C. I.	
155368	15	End Cover.....	C-9060-10
	16	Tap Bolt, 5/8"-11x1 1/8" Hex. Hd. (Cad. Pl.) with 5/8" Plain S. Lock Washer (3/16"x3/32") (Cad. Pl.).	
	17	Bolt 5/8"-11x1 7/8" Hex. Hd. S. (Cad. Pl.) with 5/8" Hex. Nut (Cad. Pl.) and 5/8" Plain S. Lock Washer (3/16"x3/32") (Cad. Pl.).	
	18	Bolt 5/8"-11x2 1/8" Hex. Hd. S. (Cad. Pl.) with 5/8" Hex. Nut (Cad. Pl.) and 5/8" Plain S. Lock Washer (3/16"x3/32") (Cad. Pl.).	
	19	Machine Screw, No. 10-30x3/8" Rd. Hd. S. (Cad. Pl.) for Ref. 39.	
37398	20	Washer.....	8274-67
163100	21	Hasp.....	8299-115
163073	22	Eye Bolt with 1/2" Hex. Nut.....	8034-197
163094	23	Collar.....	8072-646
53780	24	Pin.....	8097-665
79224	25	Yellow Lens, 5" Diam.....	B-8276-8
79225	25a	Red Lens, 5" Diam.....	B-8276-8
156017	26	Housing.....	C-9060-14
129899	27	Lens Ring.....	7436-128

UNION SWITCH & SIGNAL CO.

TWO-COLOR SUBWAY LIGHT DWARF SIGNAL WITH RELAY AND CASE  
(5" SINGLE LENS)

(Continued)

Order by Plate, Piece, Reference and Abbreviated Description Given in  
Heavy Face Type Only

Piece	Ref.	Description	Drawing Reference
	28	Tap Bolt, 1/4"-20x1" Hex. Hd. (Cad. Pl.) with 1/4" Plain S. Lock Washer (1/8"x1/16") (Cad. Pl.).	
163647	29	Lamp Base.....	12415-26
	30	Machine Screw, No. 10-30x1/2" Fil. Hd. Br. (N. P.) with one Washer Ref. 30a and one Washer Ref. 30b	
73493	30a	Washer.....	7826-78
	30b	Lock Washer, No. 10 Plain S. (1/8"x3/64") (Cad. Pl.).	
156019	31	Glass Shield (White).....	8163-222
156064	31a	Glass Shield (Red).....	8163-222
156020	32	Shield Holder.....	7436-139
	33	Machine Screw, No. 10-30x1/4" Rd. Hd. S. (Cad. Pl.).	
160166	34	Shelf.....	12443-163
52335	35	Washer.....	7828-184
156205	36	Terminal Board complete with Terminal Posts.....	9968-917
156062	36a	Terminal Board only.....	9968-916
	37	Machine Screw, No. 14-24x1" Fil. Hd. S. (Cad. Pl.).	
148970	38	Lamp Bulb, 10 Volt, 5 Watt, Single Contact Bayonet Base.....	B-12409-18
158946	39	Number Plate (Orders should specify numbering desired).....	11878-7
	40	Style A. N. L.-2 Relay (When ordering refer to Plate E-1090).....	B-12548-5

UNION SWITCH & SIGNAL CO.

TWO-COLOR SUBWAY LIGHT DWARF SIGNAL WITH RELAY AND CASE  
 (5" SINGLE LENS)  
 (Continued)

Order by Plate, Piece, Reference and Abbreviated Description Given in  
 Heavy Face Type Only

Piece	Ref.	Description	Drawing Reference
21918	41	Holder.....	B-7318-5
21919	42	Screen.....	B-7318-5
	43	Flax Packing, 3/8" Sq. x 4' 8" long for Ref. 6.	
	44	Flax Packing, 3/8" Sq. x 3' 9" long for Ref. 4.	
	45	Terminal Post with Nuts and Washers (Inc. 1-45a, 2-46, 2-47, 1-48 and 1-49).....	12451-
146958	45a	Terminal Post only for Ref. 45.....	8094-1192
29101	46	Nut.....	8109-193
29102	47	Washer.....	7828-139
29103	48	Nut.....	8109-194
29104	49	Washer.....	7828-138