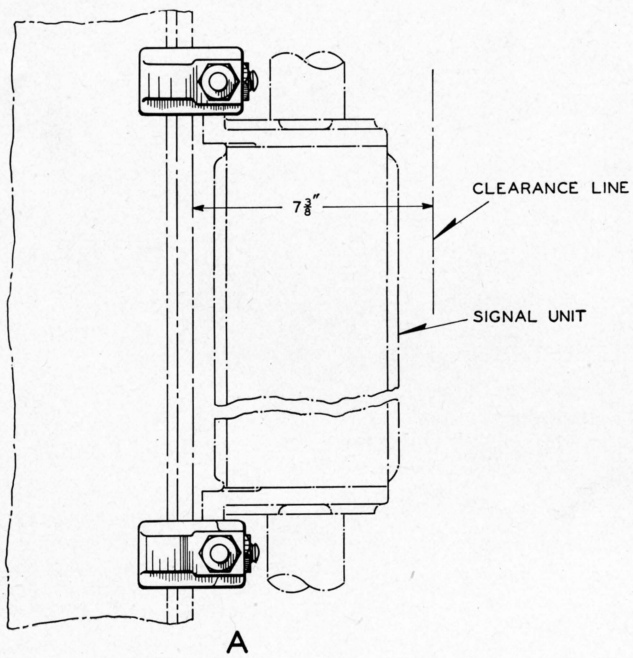
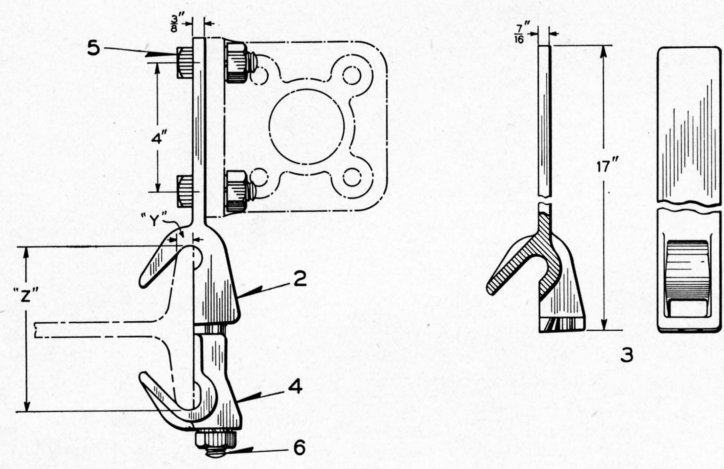


UNION SWITCH & SIGNAL CO.



APPLICATION OF SUBWAY COLOR LIGHT SIGNALS TO
"T" BEAMS OR BUILT UP COLUMNS

UNION SWITCH & SIGNAL CO.

APPLICATION OF SUBWAY COLOR LIGHT SIGNALS TO
"I" BEAMS OR BUILT UP COLUMNS

Order by Plate, Piece, Reference and Abbreviated Description Given in
Heavy Face Type Only

Signal Brackets and Clamps for Mounting Subway Color Light Signals Dwg. B-10325-297						
Piece	Ref.	Dimensions		Bolt Ref.	Column	Remarks
		"Y"	"Z"			
194276	A	...	5"	6	12" "I" Beam	Painted Brackets
194276	Aa	...	5½" Min. to 5⅝" Max.	6a	12" and 15" "I" Beam	Painted Brackets
194276	Ab	...	6¾"	6b	15" "I" Beam	Painted Brackets
194276	Ac	...	8⅝"	6e	6½" Built up	Painted Brackets
194276	Ad	...	8¾"	6f	6½" Built up	Painted Brackets
194276	Ae	...	10⅝"	6h	6½" and 8¼" Built up	Painted Brackets
194276	Af	...	10¾"	6j	6½" and 8¼" Built up	Painted Brackets
194276	Ag	...	12⅝"	6k	6½" and 8¼" Built up	Painted Brackets
194276	Ah	...	12¾"	6m	6½" and 8¼" Built up	Painted Brackets
194277	Aj	⅜"	6⅓"	6c		Galv. Brackets
194277	Ak	⅞"	6⅞"	6c		Galv. Brackets
194277	Am	⅞"	7"	6c		Galv. Brackets
194277	An	⅞"	7½"	6d		Galv. Brackets
194277	Ap	⅞"	8⅝"	6g		Galv. Brackets

UNION SWITCH & SIGNAL CO.

APPLICATION OF SUBWAY COLOR LIGHT SIGNALS TO
 "T" BEAMS OR BUILT UP COLUMNS

(Continued)

Order by Plate, Piece, Reference and Abbreviated Description Given in
 Heavy Face Type Only

Piece	Ref.	Dimensions		Bolt Ref.	Column	Remarks
		"Y"	"Z"			
194277	Aq	$\frac{9}{16}$ " & $\frac{5}{8}$ "	$8\frac{7}{8}$ "	6g		Galv. Brackets
194277	Ar	$\frac{9}{16}$ "	$9\frac{1}{16}$ "	6g		Galv. Brackets
194277	As	$\frac{5}{8}$ "	$12\frac{1}{16}$ "	6n		Galv. Brackets
Piece	Ref.	Description				Drawing Reference
178230	2	Bracket (Painted) for Refs. A to Ah				C-8034-25
194272	2a	Bracket (Galv.) for Refs. Aj to As				C-8034-25
197454	3	Bracket (Painted) without holes				C-8034-25
178232	4	Clamp (Painted)				C-8034-25
194274	4a	Clamp (Galv.)				C-8034-25
	5	Bolt $\frac{5}{8}$ "x2" Sq. Hd. S. with $\frac{5}{8}$ " Hex. Nut and $\frac{5}{8}$ " Plain S. Lock Washer ($\frac{7}{32}$ "x $\frac{1}{8}$ ") Cad. Pl. for Refs. A to Ah				
	5a	Bolt $\frac{5}{8}$ "x2" Sq. Hd. S. with $\frac{5}{8}$ " Hex. Nut and $\frac{5}{8}$ " Plain S. Lock Washer ($\frac{7}{32}$ "x $\frac{1}{8}$ ") Galv. for Refs. Aj to As				

UNION SWITCH & SIGNAL CO.

APPLICATION OF SUBWAY COLOR LIGHT SIGNALS TO
 "T" BEAMS OR BUILT UP COLUMNS

(Continued)

Order by Plate, Piece, Reference and Abbreviated Description Given in
 Heavy Face Type Only

Bolt $\frac{5}{8}$ " Sq. Hd. S. with $\frac{5}{8}$ " Hex. Nut and $\frac{5}{8}$ " Plain S. Lock Washer ($\frac{7}{32}$ "x $\frac{1}{8}$ ")					
Piece	Ref.	Length	Used with Ref.	Finish	Remarks
	6	4 $\frac{1}{2}$ "	A	Cad. Plated	
	6a	5"	Aa	Cad. Plated	
	6b	6 $\frac{1}{4}$ "	Ab	Cad. Plated	
	6c	7"	Aj, Ak, Am	Galv.	
	6d	7 $\frac{1}{4}$ "	An	Galv.	
	6e	7 $\frac{3}{4}$ "	Ac	Cad. Plated	
	6f	8 $\frac{1}{4}$ "	Ad	Cad. Plated	
	6g	9"	Ap, Aq, Ar	Galv.	
	6h	9 $\frac{3}{4}$ "	Ae	Cad. Plated	
	6j	10 $\frac{1}{4}$ "	Af	Cad. Plated	
	6k	11 $\frac{3}{4}$ "	Ag	Cad. Plated	
	6m	12 $\frac{1}{4}$ "	Ah	Cad. Plated	
	6n	12 $\frac{1}{4}$ "	As	Galv.	