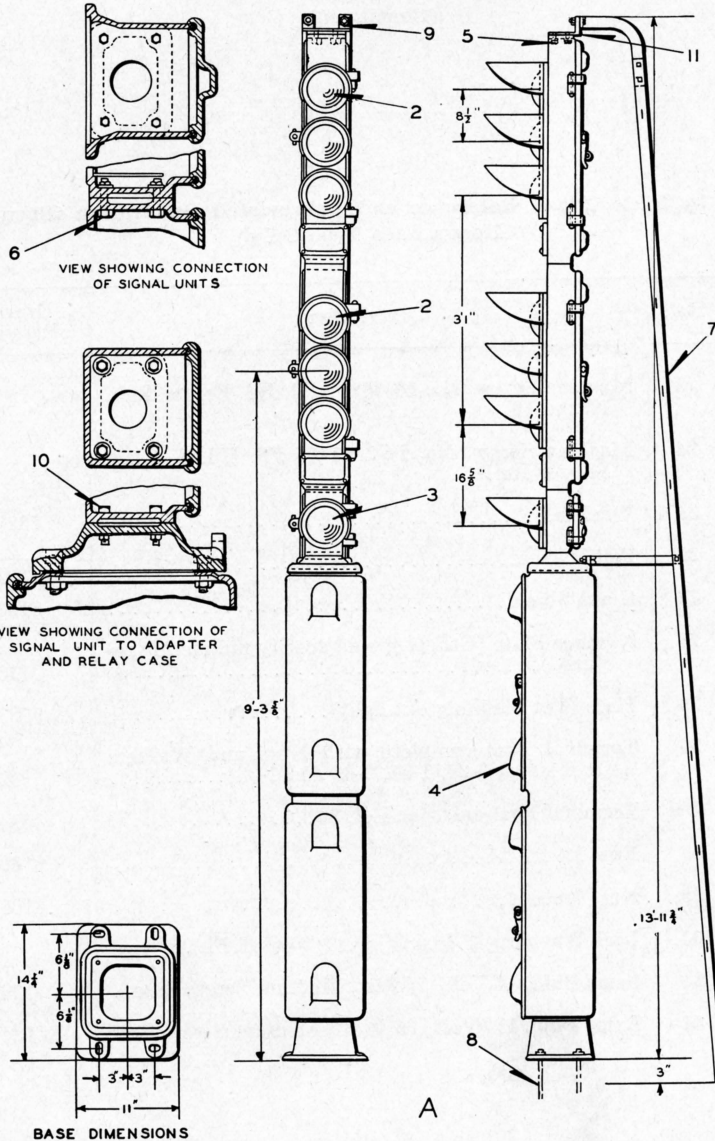


UNION SWITCH & SIGNAL CO.



COLOR LIGHT SIGNAL (MULTIPLE UNIT TYPE) WITH 6 3/8" DOUBLET LENSES FOR DAYLIGHT APPLICATION AND WITH RELAY AND TERMINAL CASE

UNION SWITCH & SIGNAL CO.

**COLOR LIGHT SIGNAL (MULTIPLE UNIT TYPE) WITH 6 $\frac{3}{8}$ " DOUBLET LENSES FOR DAYLIGHT APPLICATION AND WITH RELAY AND TERMINAL CASE**

Unless otherwise specified, three-light units will be furnished having dimensions as shown; with top lens "Green," middle lens "Yellow," bottom lens "Red" and one light signal with "Yellow" lens.

**Order by Plate, Piece, Reference and Abbreviated Description Given in Heavy Face Type Only**

Piece	Ref.	Description	Drawing Reference
159318	A	<b>Color Light Signal</b> , complete with two three-color Units (Top Lens "Green," Middle Lens "Yellow" and Bottom Lens "Red" 6 $\frac{3}{8}$ " Doublet Lens) one, one-color 6 $\frac{3}{8}$ " Doublet Yellow Lens Signal Unit, Illuminated Number Plates, Double Instrument Case, Foundation Bolts, Ladder and 120-Volt, 36-Watt Screw Base Lamp Bulbs (orders should specify numbers desired on number plates) . . . . .	B-10325-217
159167	2	<b>Three-Color Light Signal Unit</b> , complete (without End Plate) with 6 $\frac{3}{8}$ " Doublet Lens, Top Lens "Green," Middle Lens "Yellow," and Bottom Lens "Red"; 120-Volt, 36-Watt Screw Base Lamp Bulbs and number plate (for details refer to Plate B-3435) (orders should specify number desired on number plate) . . . . .	C-6769-36
159171	3	<b>One-Color Light Signal</b> , complete with 6 $\frac{3}{8}$ " Doublet Yellow Lens and 120-Volt, 36-Watt Screw Base Lamp Bulbs (for details refer to Plate B-3440) . . . . .	C-6769-31
164421	4	<b>Relay and Terminal Case</b> (For details refer to Plate L-1178) . . . . .	C-7538-22
	5	<b>Tap Bolt</b> , 5/8"-11x1 $\frac{1}{4}$ " Hex. Hd. with 5/8" Plain S. Lock Washer (3/16"x3 $\frac{3}{2}$ ") (Cad. Pl.) for attaching End Plate Ref. 11 to Signal Unit.	
	6	<b>Bolt</b> , 5/8"-11x1 $\frac{1}{2}$ " Hex. Hd. with 5/8" Plain S. Lock Washer (3/16"x3 $\frac{3}{2}$ ") and 5/8" Hex. Jam Nut (Cad. Pl.) for attaching Signal Units together.	
160511	7	<b>Sloping Ladder with Stays</b> , 14'-4" long . . . . .	B-10313-459
136173	8	<b>Foundation Bolt</b> , 3/4"x2' 0" with 3/4" Plate Washer and 3/4" Hex. Nut . . . . .	7913-343

UNION SWITCH & SIGNAL CO.

**COLOR LIGHT SIGNAL (MULTIPLE UNIT TYPE) WITH 6 $\frac{3}{8}$ " DOUBLET  
LENSES FOR DAYLIGHT APPLICATION AND WITH RELAY  
AND TERMINAL CASE  
(Continued)**

Unless otherwise specified, three-light units will be furnished having dimensions as shown; with top lens "Green," middle lens "Yellow," bottom lens "Red" and one light signal with "Yellow" lens.

**Order by Plate, Piece, Reference and Abbreviated Description Given in  
Heavy Face Type Only**

Piece	Ref.	Description	Drawing Reference
	9	Bolt, 1/2"x1 1/2" Sq. Hd. with Hex. Nut for attaching Ladder to End Plate.	
	10	Bolt, 5/8"-11x1 7/8" with 5/8" Plain S. Lock Washer (3/16"x3/2") and 5/8" Hex. Nut (Cad. Pl.) for attaching Signal Unit to Relay and Terminal Case.	
159468	11	End Plate.....	C-9060-21