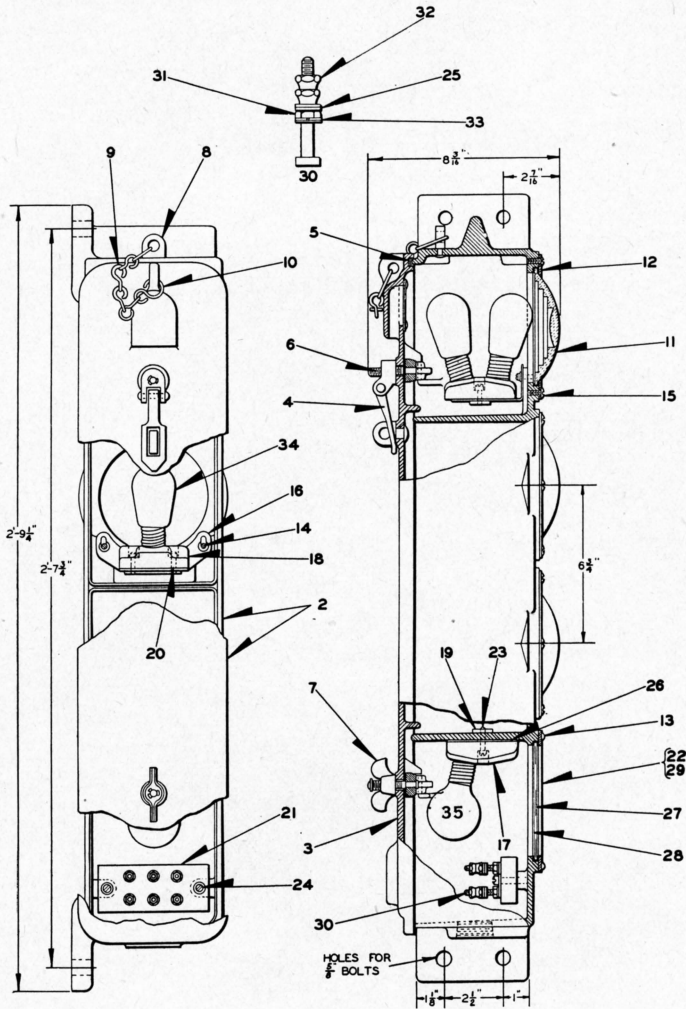


UNION SWITCH & SIGNAL CO.



A

ONE-UNIT THREE-COLOR SUBWAY LIGHT SIGNAL WITH ILLUMINATED NUMBER PLATE

UNION SWITCH & SIGNAL CO.

ONE-UNIT THREE-COLOR SUBWAY LIGHT SIGNAL WITH
ILLUMINATED NUMBER PLATE

Order by Plate, Piece, Reference and Abbreviated Description Given in
Heavy Face Type Only

Three-Color Subway Light Signal with 5" Single Lens, Lamps Ref. 34 and Number Plate. Order should specify numbers desired on Number Plate								
Piece	Ref.	Top Light		Middle Light		Bottom Light		Drawing Reference
		Color	Ref.	Color	Ref.	Color	Ref.	
143971	A	Green	11b	Yellow	11a	Red	11	C-6769-24
144216	Aa	Blank	..	Yellow	11a	Red	11	C-6769-24
144217	Ab	Green	11b	Yellow	11a	Red	11	C-6769-24
144218	Ac	Red	11	Blank	..	Yellow	11a	C-6769-24
144219	Ad	Blank	..	Yellow	11a	Red	11	C-6769-24
Piece	Ref.	Description						Drawing Reference
143972	2	Case and Door with Hasp, Wing Nut, Staple and Yokes.....						C-6769-24
143931	2a	Case only for Ref. 2.....						C-9060-5
143944	3	Door with Ventilator.....						C-9060-6
116087	4	Hasp.....						8299-66
143930	5	Gasket.....						8078-717
129902	6	Yoke with $\frac{1}{16}$ " x $\frac{3}{4}$ " S. Cotter.....						12562-2
55983	7	Wing Nut.....						8331-20
903	8	Staple.....						8191-1
	9	No. 8 Steel Single Jack Chain (8-Links) (Cad. Pl.).						
	10	"S" Hook (Cad. Pl.).						

UNION SWITCH & SIGNAL CO.

ONE-UNIT THREE-COLOR SUBWAY LIGHT SIGNAL WITH
ILLUMINATED NUMBER PLATE
(Continued)

Order by Plate, Piece, Reference and Abbreviated Description Given in
Heavy Face Type Only

Piece	Ref.	Description	Drawing Reference
79225	11	Red Lens, 5" diam.....	B-8276-8
79224	11a	Yellow Lens, 5" diam.....	B-8276-8
123004	11b	Green Lens, 5" diam.....	B-8276-8
129899	12	Lens Ring.....	7436-128
	13	Machine Screw, No. 10-30x5/8" Rd. Hd. S. (Cad. Pl.) for Ref. 12.	
	14	Machine Screw, No. 10-30x1/2" Fil. Hd. Br. (N. P.) with one Washer Ref. 14a and one Washer Ref. 14b for Ref. 16.	
73493	14a	Washer.....	7826-78
	14b	Lock Washer, No. 10 Plain S. (1/8" x 3/64") (Cad. Pl.).	
	15	Machine Screw, No. 10-30x3/8" Rd. Hd. S. (Cad. Pl.) for Ref. 12.	
111760	16	Lamp Support.....	11893-121
144211	17	Lamp Receptacle.....	B-9954-11
87187	18	Lamp Receptacle.....	B-9954-11
111757	19	Locking Plate.....	9999-119
	20	Machine Screw, No. 10-30x5/8" Fil. Hd. Br.	
143929	21	Terminal Board with Terminal Posts.....	9968-802
143928	21a	Terminal Board only.....	9968-802
143927	22	Lens Ring.....	7632-227

UNION SWITCH & SIGNAL CO.

ONE-UNIT THREE-COLOR SUBWAY LIGHT SIGNAL WITH
ILLUMINATED NUMBER PLATE
(Continued)

Order by Plate, Piece, Reference and Abbreviated Description Given in
Heavy Face Type Only

Piece	Ref.	Description	Drawing Reference
	23	Machine Screw, No. 10-30x1" Fil. Hd. Br. for Refs. 17 and 18.	
	24	Machine Screw, No. 14-24x1 1/4" Fil. Hd. S. (Cad. Pl.) for Ref. 21.	
29102	25	Washer.....	7828-139
144141	26	Felt Washer.....	8078-1441
143942	27	Glass Shield.....	8163-296
143941	28	Number Plate (Orders should specify numbering required).....	11878-4
144168	29	Plate (For blanking out light).....	9999-494
	30	Terminal Post complete with Nuts and Washers (Inc. 1-30a, 3-25, 1-31, 2-32 and 1-33).....	12451-
29147	30a	Terminal Post only, for Ref. 30.....	8094-706
29103	31	Nut.....	8109-194
29101	32	Nut.....	8109-193
	33	Lock Washer, 1/4" Plain (1/8" x 1/16") (Cad. Pl.).	
144171	34	Lamp Bulb, 14 Volt, 5 Watt, Medium Screw Base..	B-12409-3
68467	35	Lamp Bulb, 115 Volt, 25 Watt, Medium Screw Base	B-12409-6