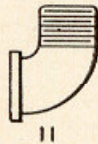
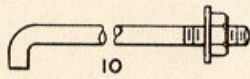
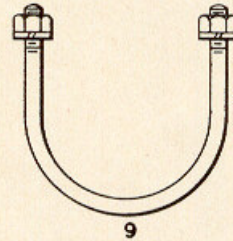
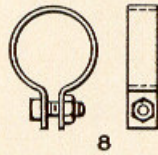
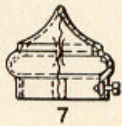
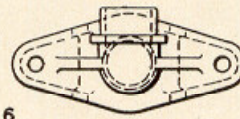
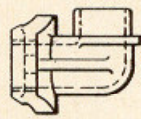
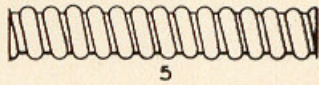
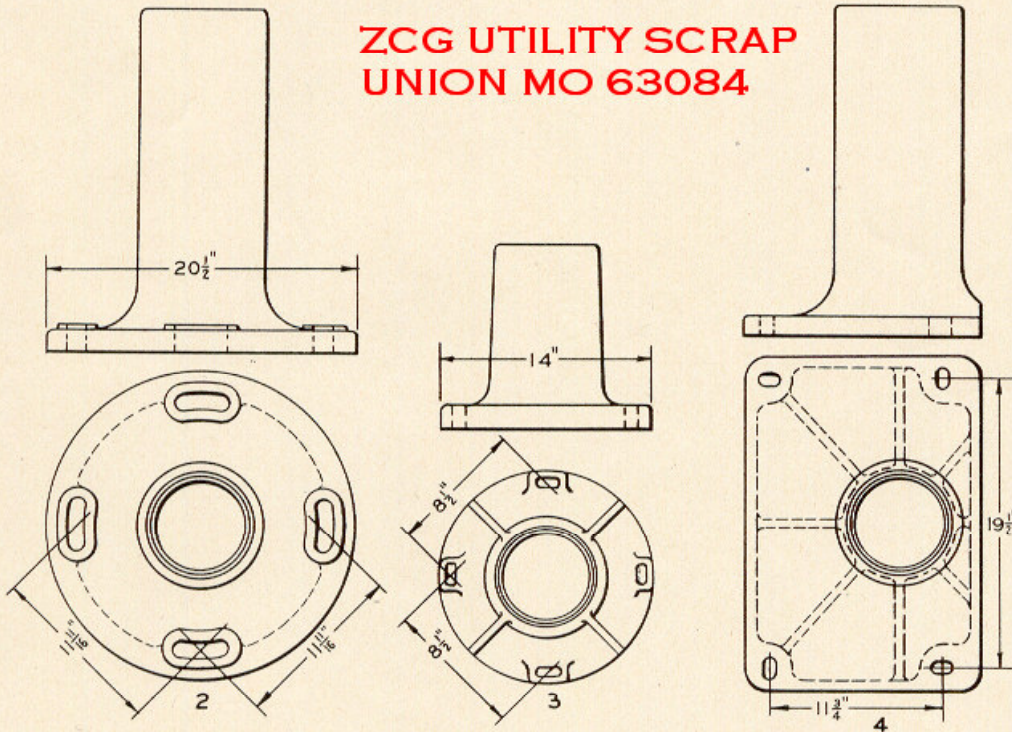


UNION SWITCH & SIGNAL CO.

MEMORANDA



ZCG UTILITY SCRAP
UNION MO 63084



STYLE "G" COLOR POSITION LIGHT SIGNALS
DETAIL PARTS
BASES, PINNACLE, CABLE OUTLET, ETC.

**ZCG UTILITY SCRAP
UNION MO 63084**

UNION SWITCH & SIGNAL CO.

STYLE "G" COLOR POSITION LIGHT SIGNALS

DETAIL PARTS

BASES, PINNACLE, CABLE OUTLET, ETC.

Order by Plate, Piece, Reference and Abbreviated Description Given in
Heavy Face Type Only

Piece	Ref.	Description	Drawing Reference
44938	2	Base, A.A.R., for 6" Pipe.....	C-6782-1
131006	2a	Base, A.A.R., for 5" Pipe.....	C-6782-11
115264	3	Base, for 5" Pipe (For mounting on top of Instrument Case).....	C-3231-2
	3a	Base, for 6" Pipe (For mounting on top of Instrument Case).....	C-3231-
61092	4	Base, A.A.R., for 5" Pipe (For Bridge Signal).....	C-7583-1
133716	4a	Base, A.A.R. for 6" Pipe (For Bridge Signal).....	C-7583-1
	5	Conduit, 2" Galv. S.S. Flex. 2" I.D. x 2.440" O.D. x 3'-0" long for Bridge Signal.	
97611	6	Cable Outlet with Gasket for Bridge Signal.....	B-10342-41
97619	6a	Gasket for Ref. 6.....	8078-1042
150818	7	Pinnacle with Tap Bolt and Sq. Nut.....	B-8121-17
147766	8	Clamp with $\frac{3}{8}$ " x $1\frac{1}{2}$ " Sq. Hd. Bolt and Hex. Nut for Bridge Signal.....	11893-385
46567	9	U-Bolt with $\frac{1}{2}$ " Hex. Nuts and $\frac{1}{2}$ " Pl. S. Lock Washers ($\frac{3}{16}$ " x $\frac{3}{32}$ ") for attaching Ref. 6 to 5" Post.....	8782-77
10276	10	Foundation Bolt, 1" x 3'-0" with 1" Hex. Nut and 1" Std. Plate Washer.....	7913-54
153257	11	1 $\frac{1}{2}$ " Street Ell.....	B-10342-32
	12	1 $\frac{1}{2}$ " Chase Nipple.	