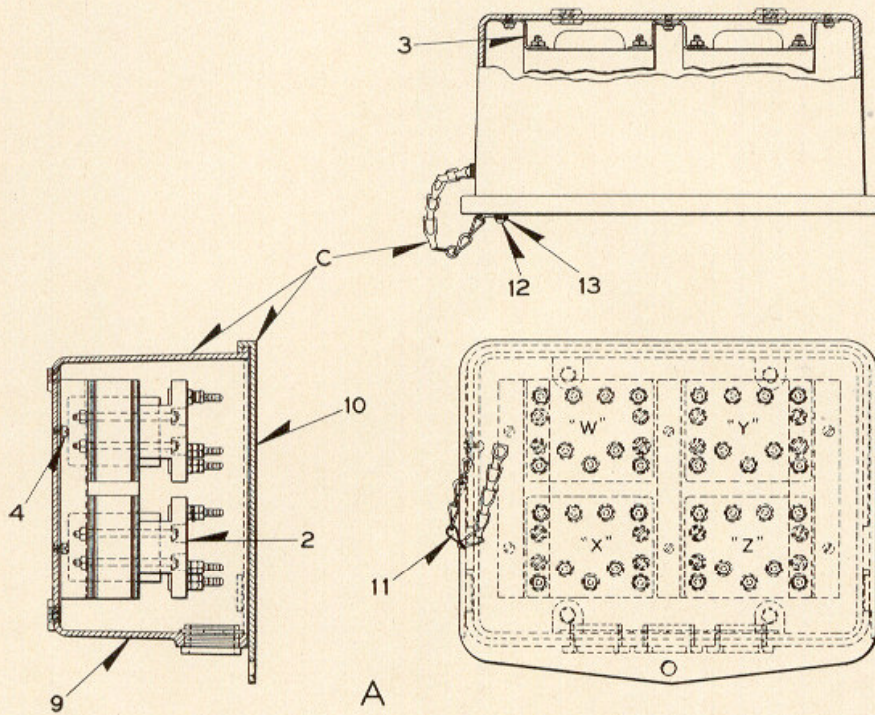
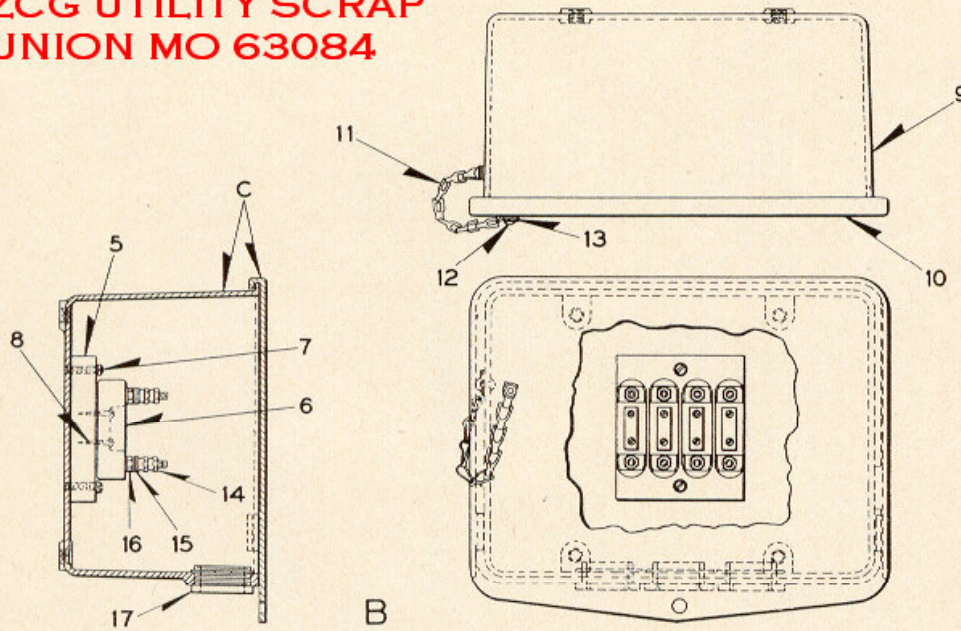


UNION SWITCH & SIGNAL CO.

MEMORANDA



**ZCG UTILITY SCRAP
UNION MO 63084**



STYLE "G" COLOR POSITION LIGHT SIGNALS
DETAIL PARTS
TRANSFORMER AND TERMINAL BOXES

STYLE "G" COLOR POSITION LIGHT SIGNALS

DETAIL PARTS

TRANSFORMER AND TERMINAL BOXES

Transformers Have Secondaries for 13½-Volt,
17-Watt Lamps

**Order by Plate, Piece, Reference and Abbreviated Description Given in
Heavy Face Type Only**

Transformer Box, complete with Transformers						
Piece	Ref.	Transformers				Dwg. Ref.
		No.	Volts	Cycles	In Spaces	
168970	A	4	110	60	W-X-Y-Z	C-7540-17
168971	Aa	3	110	60	W-X-Z	C-7540-17
167855	Ab	3	110	60	W-X-Y	C-7540-17
167674	Ac	3	110	60	W-Y-Z	C-7540-17
176408	Ad	2	110	60	X-Z	C-7540-17
Piece	Ref.	Description				Drawing Reference
169343	B	Terminal Box , complete with Terminal Board and four A.A.R. terminals.....				C-7540-18
167944	C	Transformer and Terminal Box Only with Cover and Chain.....				C-7540-17
140877	2	Transformer , complete 110 Volts, 60 Cycles.....				C-8605-5
167943	3	Bracket for Transformer.....				10914-255
	4	Machine Screw No. 14-24x $\frac{3}{8}$ " Fil. Hd. S. with $\frac{1}{4}$ " Plain Lock Washer ($\frac{1}{16}$ "x $\frac{1}{16}$ ") Cad. Pl.				
169317	5	Terminal Board Only				9968-1028
	6	A.A.R. Terminal Block Complete with Nuts and Washers (Inc. 1-6a, 4-14 and 6-15).....				9968-625
116846	6a	A.A.R. Terminal Block Complete (Inc. 2-15 and 2-16).....				9968-625
	7	Machine Screw No. 14-24x $\frac{1}{8}$ " Fil. Hd. S. with $\frac{1}{4}$ " Std. Plate Washer.				

UNION SWITCH & SIGNAL CO.

STYLE "G" COLOR POSITION LIGHT SIGNALS

(Continued)

DETAIL PARTS

TRANSFORMER AND TERMINAL BOXES

Order by Plate, Piece, Reference and Abbreviated Description Given in Heavy Face Type Only

Piece	Ref.	Description	Drawing Reference
	8	Wood Screw No. 12x1 $\frac{1}{4}$ " Rd. Hd. S.	
167671	9	Box Only.....	C-8614-18
167672	10	Cover Only.....	C-8614-19
135635	11	Chain Only.....	12535-1
	12	Rivet $\frac{3}{16}$ "x $\frac{5}{8}$ " Rd. Hd. I.	
38710	13	Washer.....	7826-98
29101	14	Nut.....	8109-193
29102	15	Washer.....	7828-139
127260	16	Nut.....	8109-194
	17	1 $\frac{1}{2}$ " Galv. Chase Nipple with Lock Nut.	

**ZCG UTILITY SCRAP
UNION MO 63084**