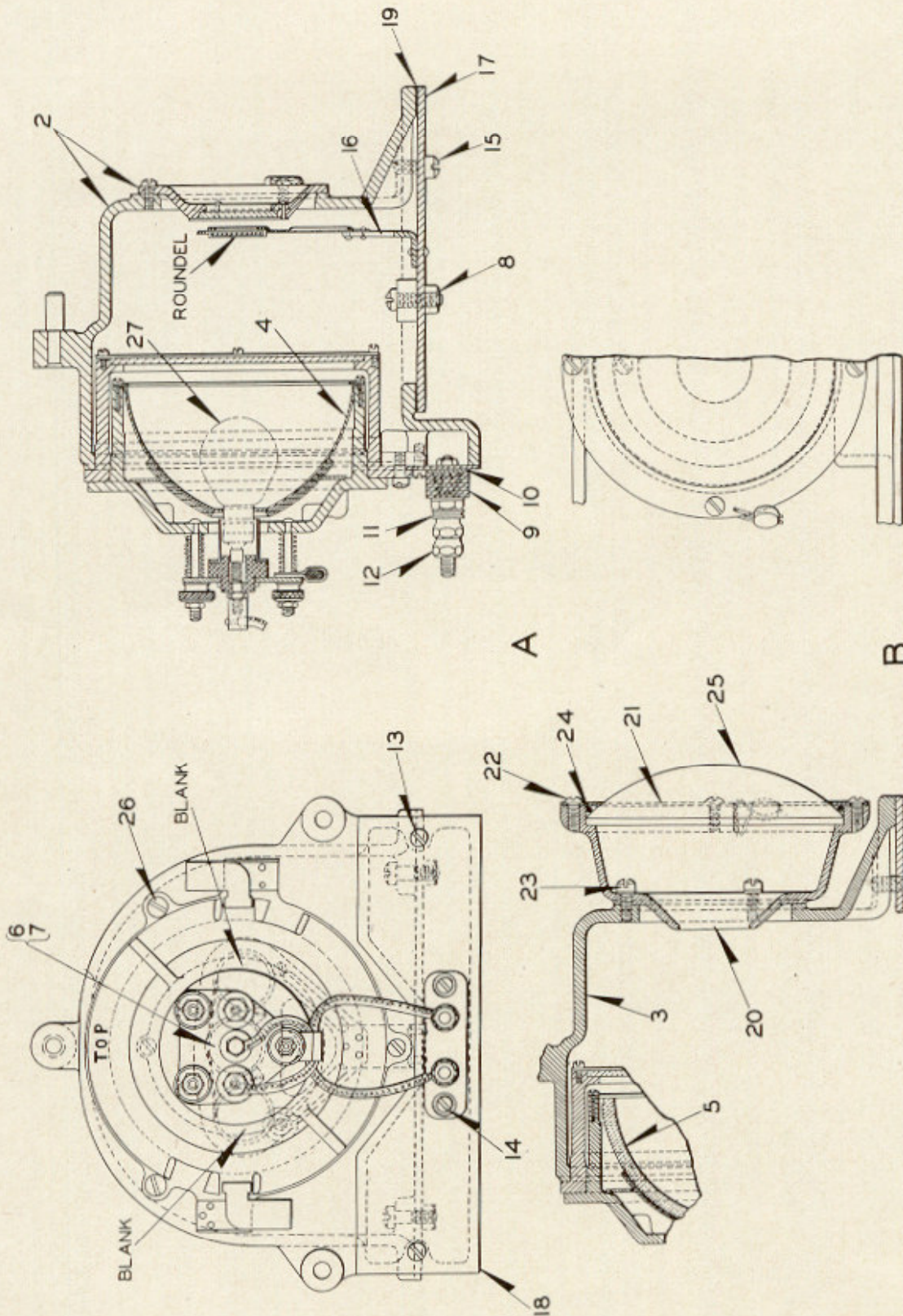


UNION SWITCH & SIGNAL CO.

ZCG UTILITY SCRAP
UNION MO 63084



STYLES "H" AND "H-2" LAMP UNITS FOR INOPERATIVE SIGNAL

UNION SWITCH & SIGNAL CO.

COLOR LIGHT SEARCH LIGHT SIGNAL

DETAIL PARTS

STYLES "H" AND "H-2" LAMP UNITS FOR INOPERATIVE SIGNAL

These units to be used in standard signal cases for fixed signals or marker lights where a signal indication exactly the same as the operating signal is desired. This type of inoperative unit can later be replaced with a standard operating unit if desired.

Order by Plate, Piece, Reference and Abbreviated Description Given in Heavy Face Type Only

Piece	Ref.	Description	Drawing Reference
159064	A	Style "H" Lamp Unit Complete (with red roundel) for Inoperative Signal (Without Lamp Ref. 27) . . .	C-9158-8
169545	B	Style "H-2" Lamp Unit Complete (with red roundel) and Plano-Convex Lens, for Inoperative Signal (without Lamp Ref. 27)	C-9158-8
175970	Ba	Style "H-2" Lamp Unit Complete (with yellow roundel) and Plano-Convex Lens, for Inoperative Signal (without Lamp Ref. 27)	C-9158-8
144011	2	Upper Case Complete with roundel ring and stud for Ref. A	C-9158-4
144010	2a	Upper Case only, for Ref. A	C-9158-4
169547	3	Upper Case Complete with Stud Ref. 3a for Refs. B and Ba	C-9158-4
143663	3a	Stud for Ref. 3	8114-375
173693	4	Reflector Complete with lamp socket and retaining ring for Ref. A (For details refer to Plate B-2885) . .	C-9158-5
171634	5	Reflector Complete with lamp socket and retaining ring for Refs. B and Ba (For details refer to Plate B-2888)	C-9158-5
410431	6	Roundel (Red) for Refs. A and B	410430
413675	7	Roundel (Yellow) for Ref. Ba	410430
	8	Machine Screw, 1/4"-20x3/4" Fil. Hd. S. with Nut Ref. 8a	
74972	8a	Nut for Ref. 8	8265-133
411175	9	Terminal Block with Terminal Posts (Without Nuts and Washers)	411175

UNION SWITCH & SIGNAL CO.

**COLOR LIGHT SEARCH LIGHT SIGNAL
(Continued)**

DETAIL PARTS

STYLES "H" AND "H-2" LAMP UNITS FOR INOPERATIVE SIGNAL

**Order by Plate, Piece, Reference and Abbreviated Description Given in
Heavy Face Type Only**

Piece	Ref.	Description	Drawing Reference
410539	10	Insulation.....	410539
29102	11	Washer.....	7828-139
29101	12	Nut.....	8109-193
	13	Machine Screw, No. 10-30x $\frac{3}{8}$ " Fil. Hd. S. (Cad. Pl.).	
	14	Machine Screw, No. 10-30x $\frac{1}{2}$ " Fil. Hd. S. (Cad. Pl.) with Nut Ref. 14a.	
73494	14a	Nut for Ref. 14.....	8265-126
	15	Machine Screw, $\frac{1}{4}$ "-20x $\frac{1}{2}$ " Fil. Hd. S. (Cad. Pl.).	
158980	16	Spectacle (without Roundel).....	C-9158-7
159017	17	Bottom Plate.....	9999-680
159016	18	Side Plate.....	9999-679
141654	19	Gasket, used between Ref. 17 and Upper Case.....	8078-1434
167997	20	Adapter.....	C-9105-16
169544	21	Lens Ring.....	7436-141
	22	Machine Screw, No. 10-30x $\frac{1}{4}$ " Rd. Hd. S. (Cad. Pl.).	
	23	Machine Screw, No. 10-30x $\frac{1}{2}$ " Fil. Hd. S. with $\frac{3}{16}$ " Plain S. Lock Washer ($\frac{1}{16}$ "x $\frac{1}{16}$ ") Cad. Pl.	
	24	Cork Gasket ($\frac{5}{32}$ " dia. x 14" long).	
169298	25	4 $\frac{1}{2}$ " Diam. Clear Inner Lens.....	B-8276-62
	26	Machine Screw, No. 10-30x $\frac{1}{2}$ " Fil. Hd. S. (Cad. Pl.).	
	27	Lamp (When ordering refer to Plate B-2885).....	B-12409-