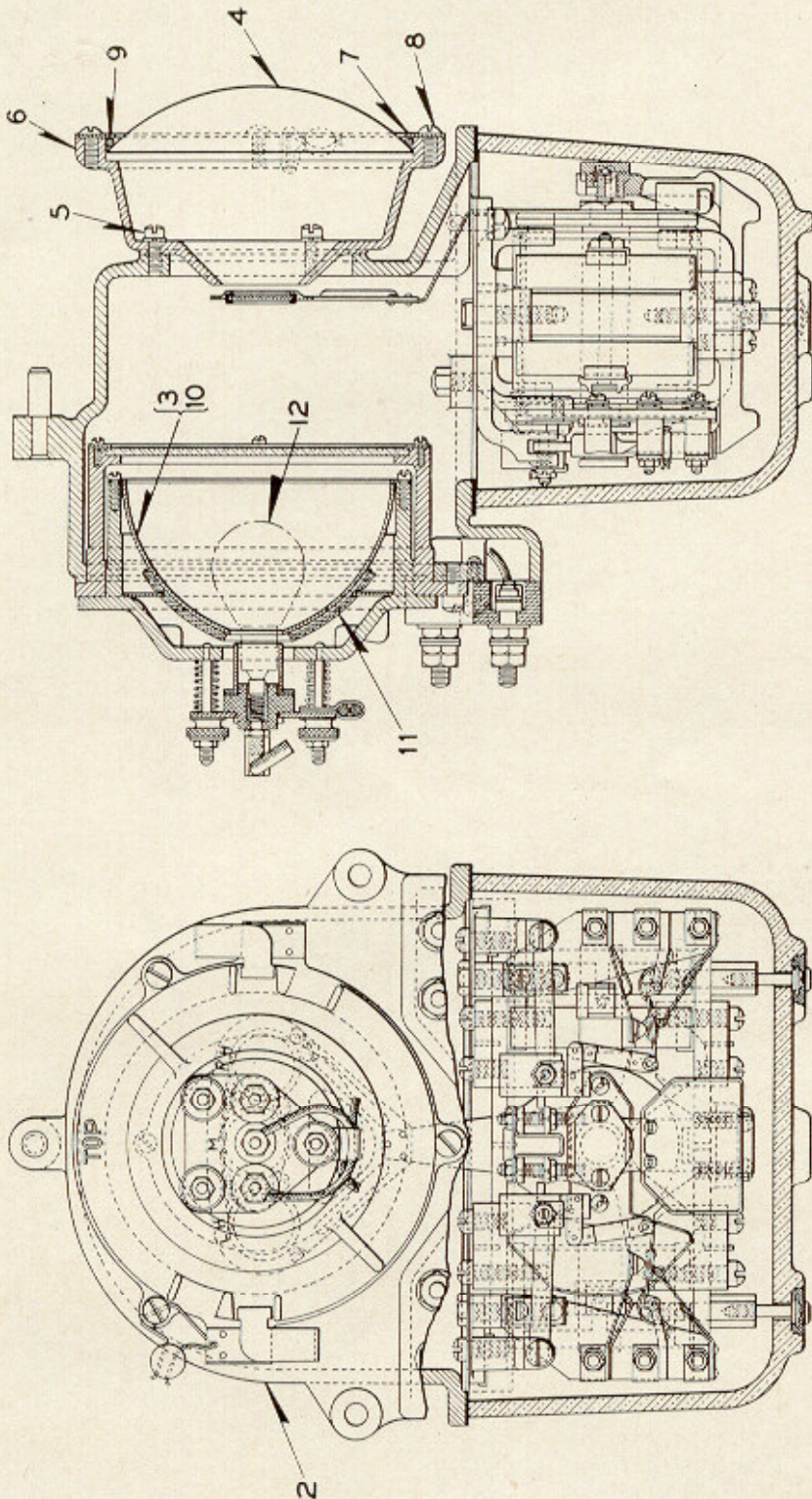


UNION SWITCH & SIGNAL CO.

ZCG UTILITY SCRAP
UNION MO 63084



A

FOR OTHER DETAILS
REFER TO PLATE B-2885

STYLE "H-2" D. C. SEARCHLIGHT SIGNAL OPERATING UNIT
(WITH CONTACTS)

UNION SWITCH & SIGNAL CO.

**STYLE "H-2" D. C. SEARCHLIGHT SIGNAL OPERATING UNIT
(WITH CONTACTS)**

**Order by Plate, Piece, Reference and Abbreviated Description Given in
Heavy Face Type Only**

D. C. Style "H-2" D. C. Searchlight Signal Operating Unit with Contacts complete (Without Lamp)								
Piece	Ref.	Armature Coil Res.	Operating Voltage	Term. Bd. Ref. Plate B-2885	L.H. Roundel	Middle Roundel	R.H. Roundel	Drawing Reference
169602	A	250-ohms	6-8 Volts	7	Yellow	Red	Green	C-9157-10
171666	Aa	250-ohms	6-8 Volts	7	Yellow	Purple	Green	C-9157-10
176998	Ab	250-ohms	6-8 Volts	7	Yellow	Red	Red	C-9157-10
175982	Ac	250-ohms	6-8 Volts	8	Green	Red	Yellow	C-9157-10
177596	Ad	500-ohms	8-10 Volts	7	Yellow	Red	Green	C-9157-10
177597	Ae	500-ohms	8-10 Volts	7	Yellow	Red	Red	C-9157-10
177598	Af	500-ohms	8-10 Volts	7	Red	Red	Green	C-9157-10
181006	Ag	250-ohms	6-8 Volts	7	White	Red	Green	C-9157-10
181050	Ah	250-ohms	6-8 Volts	7	Yellow	Red	Yellow	C-9157-10
181079	Aj	250-ohms	6-8 Volts	8	Red	Red	Yellow	C-9157-10
182268	Ak	250-ohms	6-8 Volts	7	Yellow	Purple	Purple	C-9157-10
Piece	Ref.	Description						Drawing Reference
169547	2	Upper Case						C-9158-4
171634	3	Reflector Complete with Lamp Socket and Retaining Ring						C-9158-5
	3a	Reflector Complete with Lamp Socket and Retaining Ring (Jam Nuts tightened but not soldered)						C-9158-5

**ZCG UTILITY SCRAP
UNION MO 63084**

PLATE B-2888

UNION SWITCH & SIGNAL CO.

**STYLE "H-2" D. C. SEARCHLIGHT SIGNAL OPERATING UNIT
(WITH CONTACTS)
(Continued)**

**Order by Plate, Piece, Reference and Abbreviated Description Given in
Heavy Face Type Only**

Piece	Ref.	Description	Drawing Reference
169298	4	Lens.....	B-8276-62
	5	Machine Screw, No. 10-30x $\frac{1}{2}$ " Fil. Hd. S. (Cad. Pl.) with $\frac{3}{16}$ " Plain S. Lock Washer ($\frac{1}{16}$ "x $\frac{1}{16}$ " Cad. Pl.	
167997	6	Adapter.....	C-9105-16
169544	7	Lens Ring.....	7436-141
	8	Machine Screw, No. 10-30x $\frac{1}{4}$ " Rd. Hd. S. (Cad. Pl).	
	9	Cork Gasket, $\frac{5}{32}$ " diam. x 14" Long.	
169708	10	Reflector only.....	B-12652-7
169703	11	Gasket.....	8078-1042
	12	Lamp (When ordering refer to Plate B-2885)..... For other details refer to Plate B-2885.	B-12409-