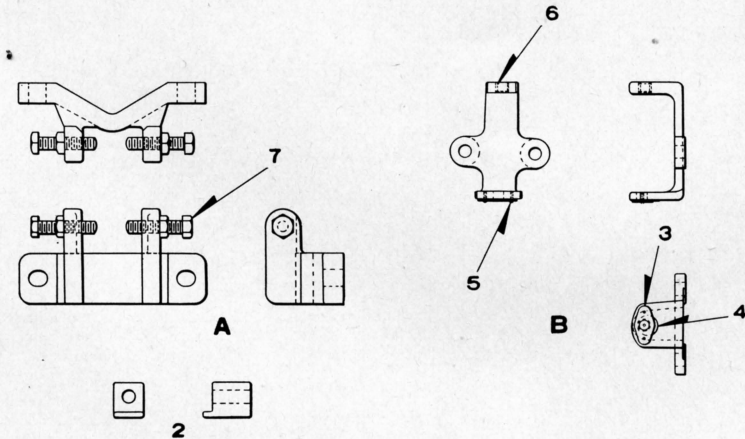
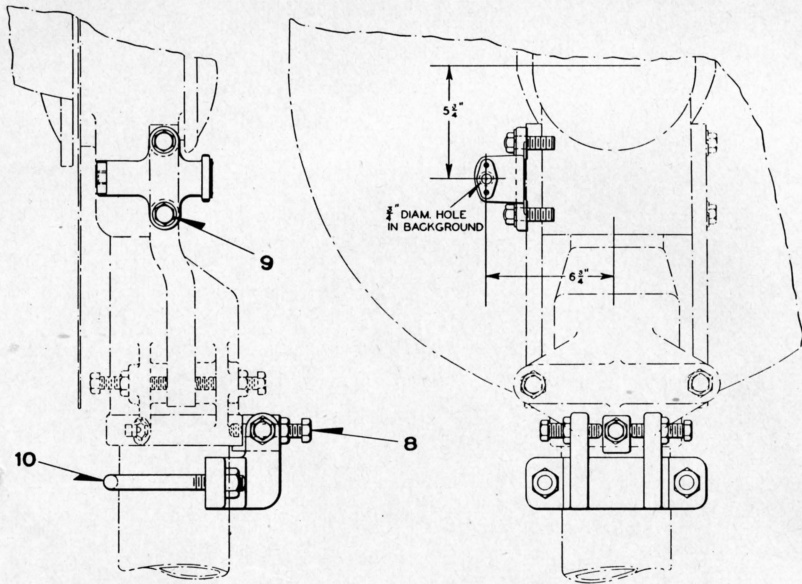


UNION SWITCH & SIGNAL CO.



ADJUSTING BRACKET AND SIGHTING TUBE

UNION SWITCH & SIGNAL CO.

STYLE "P-2" COLOR LIGHT SIGNALS

DETAIL PARTS

ADJUSTING BRACKET AND SIGHTING TUBE

Order by Plate, Piece, Reference and Abbreviated Description Given in Heavy Face Type Only.

Piece	Ref.	Description	Drawing Reference
163153	A	Horizontal Adjustment Bracket with bolts, nuts, adjustment block and sighting bracket.....	C-8900-75
	Aa	Horizontal Adjustment Bracket with bolts, nuts and adjustment block.....	C-8900
163149	Ab	Horizontal Adjustment Bracket with bolts and nuts..	C-8901-103
163151	B	Sighting Bracket with sight tube.....	C-8901-103
163152	2	Adjustment Block.....	C-8901-103
410564	3	Socket Clamp.	
152811	4	Sight Plate.....	11893-436
	5	Machine Screw, No. 8-36x1/4" Rd. Hd. S. (Cad. Pl.).	
152945	6	Sight Tube.....	C-9105-10
	7	Tap Bolt, 5/8"-11x2 3/4" Hex. Hd. with 5/8" Hex. Jam Nut (Cad. Pl.).	
	8	Tap Bolt, 5/8"-11x3 3/4" Hex. Hd. with 5/8" Hex. Jam Nut (Cad. Pl.).	
	9	Cap Screw, 5/8"-11x2" Hex. Hd. (Cad. Pl.).	
54865	10	U-Bolt, 3/4" with Hex. Nuts for attaching Ref. A to 4" Pipe.....	8782-102
43931	10a	U-Bolt, 3/4" with Hex. Nuts for attaching Ref. A to 5" Pipe or Casing.....	8782-66
44199	10b	U-Bolt, 3/4" with Hex. Nuts for attaching Ref. A to 6" Pipe.....	8782-69