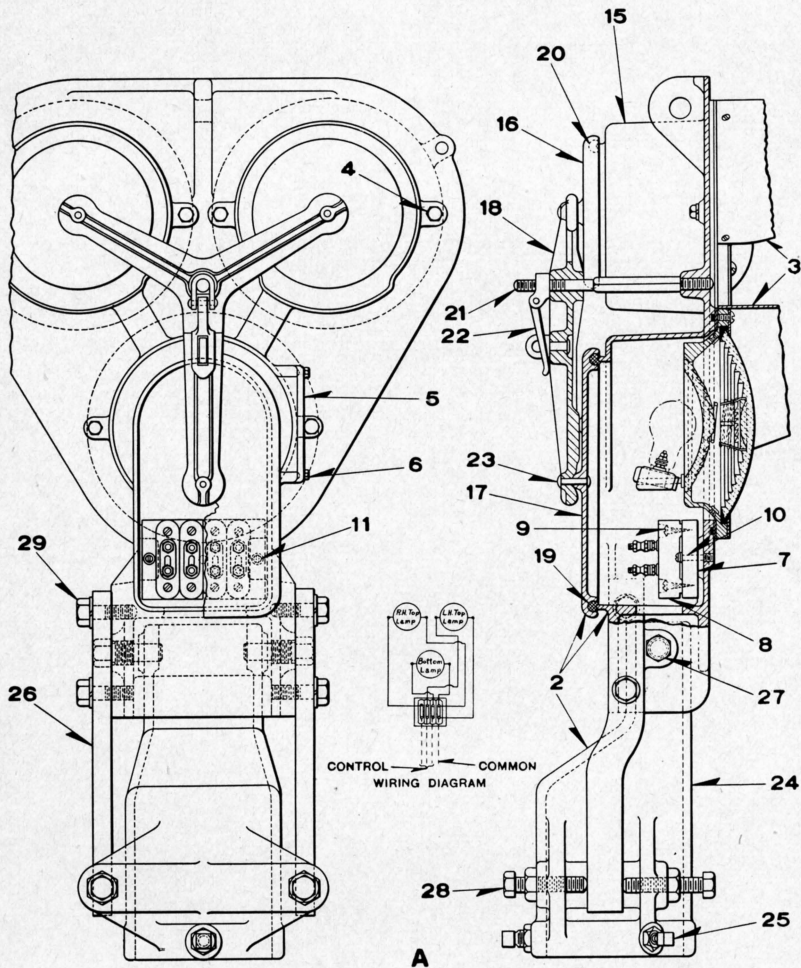


UNION SWITCH & SIGNAL CO.



THREE-COLOR STYLE "TP-2" SIGNAL UNITS

UNION SWITCH & SIGNAL CO.

THREE-COLOR STYLE "TP-2" TRIANGULAR SIGNAL UNITS

Unless otherwise specified all Signal Units will be furnished with 10-Volt, 18-Watt double filament Lamps.

Backlight can be furnished on bottom light of all signals but is not included unless mentioned in order.

Order by Plate, Piece, Reference and Abbreviated Description Given in Heavy Face Type Only.

Three-Color Style "TP-2" Signal Unit D. C. or A. C. Without Individual Transformers (Without Background)							
Piece	Ref.	L. H. Top Light	R. H. Top Light	Bottom Light	With Socket For	Remarks	Drawing Reference
133662	A	Green	Yellow	Red	5" Pipe or Casing		C-8900-43
134090	Aa	Blank	Yellow	Red	5" Pipe or Casing		C-8900-43

Piece	Ref.	Description	Drawing Reference
133661	2	Case and Cover with Socket for 5" Pipe or Casing for Style "TP-2" Triangular Three-Color Light Signals.....	C-8900-42
	3	Lens Unit for Style "TP-2" Light Signal (When ordering refer to Plate B-2785).....	C-8901-35
	4	Tap Bolt $\frac{3}{8}$ "-16x $1\frac{3}{8}$ " Hex. Hd. with $\frac{3}{8}$ " Plain Lock Washer ($\frac{5}{32}$ "x $\frac{3}{32}$ " Cad. Pl.	
122112	5	Backlight Cover.....	C-9011-3
	6	Tap Bolt $\frac{1}{4}$ "-20x $\frac{3}{4}$ " Hex. Hd. for attaching Ref. 5 to Case.	
122071	7	Terminal Board only.....	9968-647
114167	8	Terminal Block only.....	9968-629
	9	Wood Screw No. 12x1" Rd. Hd. S. (Cad. Pl.).	
	10	Machine Screw No. 14-24x $1\frac{1}{4}$ " Fil. Hd. S. (Cad. Pl.) with Washer Ref. 10a.	

UNION SWITCH & SIGNAL CO.

THREE-COLOR STYLE "TP-2" TRIANGULAR SIGNAL UNITS
(Continued)

Order by Plate, Piece, Reference and Abbreviated Description Given in Heavy Face Type Only.

Piece	Ref.	Description	Drawing Reference
84	10a	Washer only for Ref. 10	7828-6
	11	Machine Screw No. 14-24x1/2" Fil. Hd. S. (Cad. Pl.) used to Plug holes when Terminal Board is not used.	
95407	12	Disc (Used for blanking out) Not shown	B-7632-41
65898	13	Hood (Used for blanking out) Not shown	C-8842-15
	14	Machine Screw No. 10-30x1/4" Rd. Hd. S. (Cad. Pl.) for use with Refs. 12 and 13.	
133659	15	Case only for Style "TP-2" Triangular Light Signals	C-9011-9
121411	16	Top Cover	C-9011-3
121410	17	Bottom Cover	C-9011-3
122207	18	Door Clamp	C-9011-2
	19	Flax Packing 3/8" Square 2' 6" long for Bottom Cover.	
	20	Flax Packing 3/8" Square 19" long for Top Cover.	
122070	21	Stud only	8071-167
72832	22	Hasp	8299-66
	23	Rivet 1/4"x1 1/2" Rd. Hd. I.	
129250	24	Pipe Socket for 5" Pipe or Casing for Light Signals . .	C-8901-55
	25	Set Screw 5/8"-11x1 1/2" Flat Point I. with 5/8" Hex. Jam Nut (Cad. Pl.) for 5" Pipe.	

UNION SWITCH & SIGNAL CO.

THREE-COLOR STYLE "TP-2" TRIANGULAR SIGNAL UNITS

(Continued)

Order by Plate, Piece, Reference and Abbreviated Description Given in Heavy Face Type Only.

Piece	Ref.	Description	Drawing Reference
129448	26	Adjusting Bar.....	C-8901-43
149008	27	Pivot Screw.....	8378-351
	28	Tap Bolt $\frac{5}{8}$ "-11x $\frac{3}{4}$ " Hex. Hd. with $\frac{5}{8}$ " Hex. Jam Nut (Cad. Pl.).	
	29	Cap Screw $\frac{5}{8}$ "-11x $\frac{3}{4}$ " Hex. Hd. with $\frac{5}{8}$ " Plain Lock Washer ($\frac{7}{32}$ "x $\frac{1}{8}$ " Cad. Pl.	