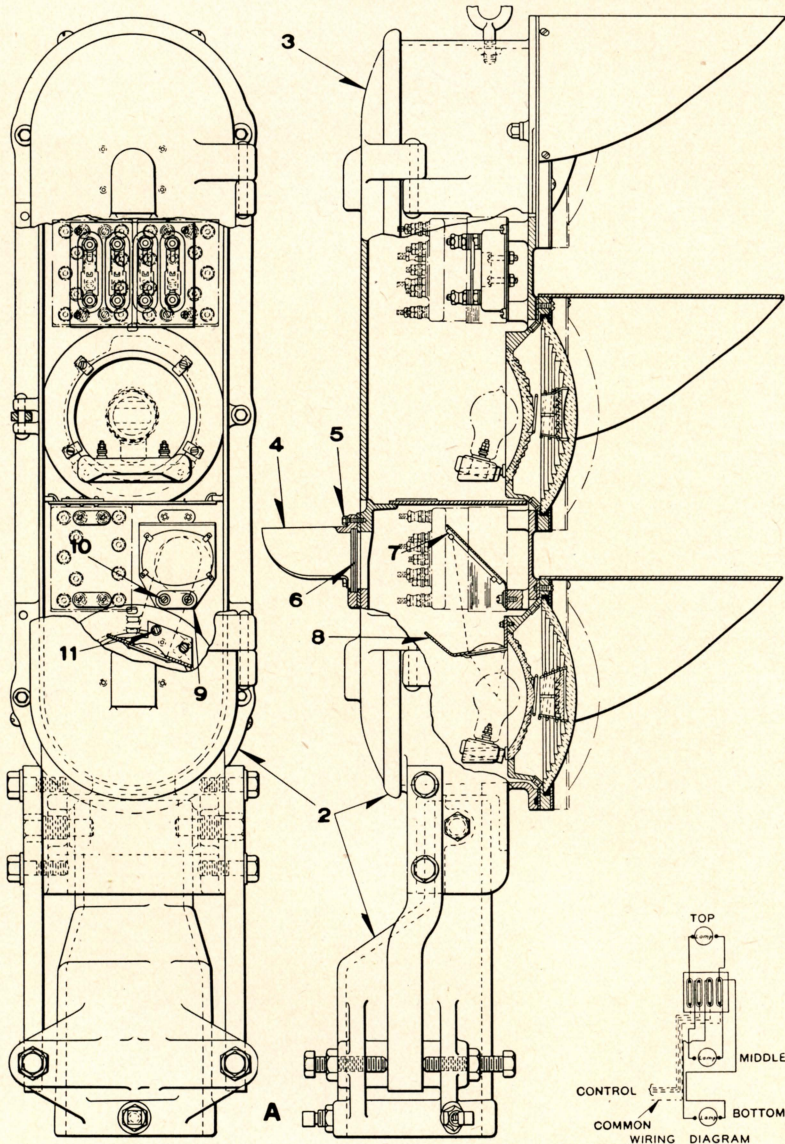


UNION SWITCH & SIGNAL CO.



THREE-COLOR STYLE "P-2" SIGNAL UNIT WITH BACKLIGHT

UNION SWITCH & SIGNAL CO.

THREE-COLOR STYLE "P-2" A. C. AND D. C. SIGNAL UNIT WITH BACKLIGHT

For Style "P-2" Three-Color Signal Units Without Backlight Refer to Plate B-2745.

Unless otherwise specified all Signal Units will be furnished with 10-Volt, 18-Watt double filament Lamps.

Order by Plate, Piece, Reference and Abbreviated Description Given in Heavy Face Type Only.

Three-Color Style "P-2" Signal Unit with Backlight, without backgrounds							
Piece	Ref.	Top Light	Middle Light	Bottom Light	With Socket for	Remarks	Drawing Reference
135214	A	Green	Yellow	Red	5" Pipe or Casing	D.C. or A.C. without individual transformers	C-8900-47
	Aa	Green	Yellow	Red	5" Pipe or Casing	A.C. with individual transformers as shown in dot and dash lines (Orders should specify voltage and frequency)	C-8900
Piece	Ref.	Description					Drawing Reference
135212	2	Case and Cover with Socket for 5" Pipe or Casing for Style "P-2" Three-Color Light Signal arranged for Backlight.....					C-8900-46
116415	3	Door, with Staple, Packing and Ventilators for Style "P-2" Three-Color Light Signal arranged for Backlight.....					C-8901-33
116426	4	Hood for Backlight					C-8901-33
	5	Tap Bolt 1/4"-20x3/4" Hex. Hd. with 1/4" Plain Lock Washer (1/16"x1/16") Cad. Pl. for attaching Ref. 4 to Door.					
116348	6	Roundel for Backlight.....					8468-33
116445	7	Reflector Support with Reflector for Backlight.....					C-8901-34
116443	8	Backlight Lens Support with Lens.....					C-8901-34

UNION SWITCH & SIGNAL CO.

THREE-COLOR STYLE "P-2" A. C. AND D. C. SIGNAL UNIT WITH
BACKLIGHT

(Continued)

For Style "P-2" Three-Color Signal Units Without Backlight Refer to Plate
B-2745.

Order by Plate, Piece, Reference and Abbreviated Description Given in
Heavy Face Type Only.

Piece	Ref.	Description	Drawing Reference
116440	9	Washer for Reflector.....	11893-144
	10	Machine Screw No. 14-24x $\frac{1}{2}$ " Fil. Hd. S. with $\frac{1}{4}$ " Plain Lock Washer ($\frac{1}{16}$ "x $\frac{1}{16}$ ") Cad. Pl.	
	11	Machine Screw No. 10-30x $\frac{3}{8}$ " Fil. Hd. S. with No. 10 Plain Lock Washer ($\frac{1}{8}$ "x $\frac{3}{4}$ ") Cad. Pl.	
Note:—For detail parts not shown on this Plate refer to Plate B-2745.			