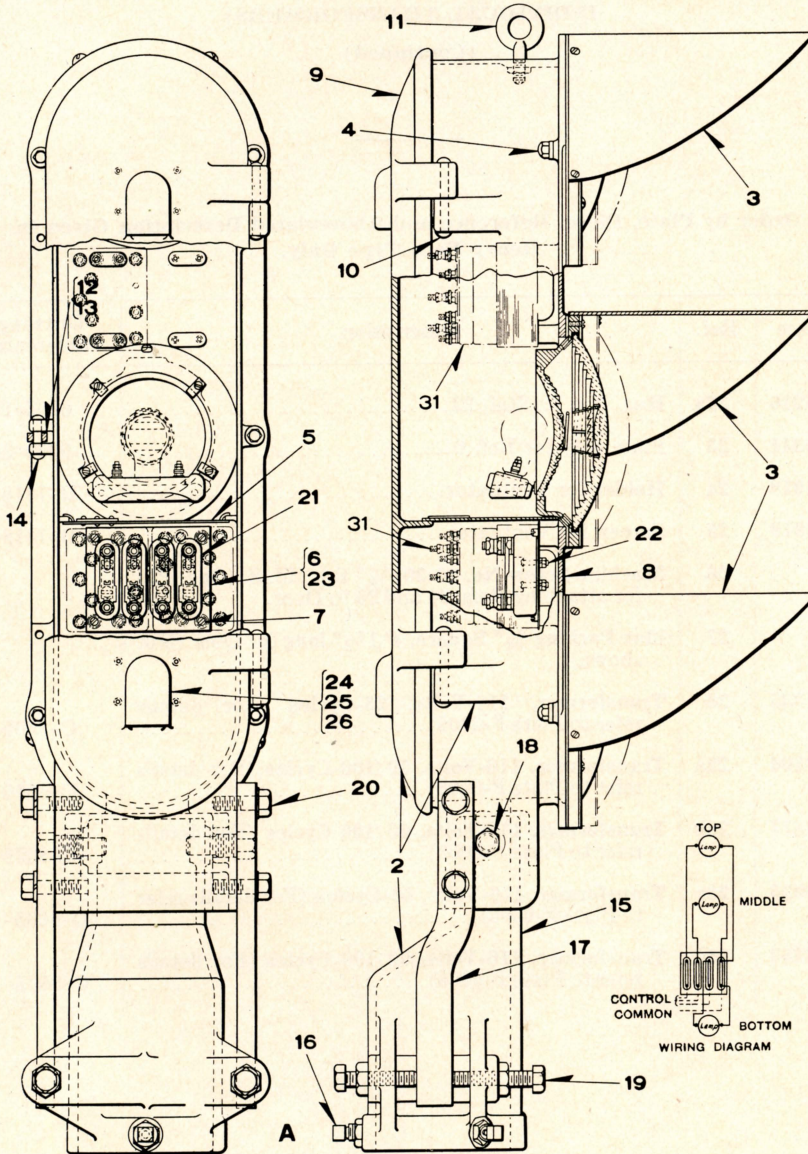


UNION SWITCH & SIGNAL CO.



THREE-COLOR STYLE "P-2" SIGNAL UNITS

UNION SWITCH & SIGNAL CO.

**THREE-COLOR STYLE "P-2" SIGNAL UNITS, (WITHOUT BACKLIGHT)
D. C. OR A. C. WITHOUT INDIVIDUAL TRANSFORMERS**

For Style "P-2" Three-Color Signal Units with Backlight Refer to Plate B-2750

Unless otherwise specified all Signal Units will be furnished with 10-Volt, 18-Watt double filament Lamps.

Order by Plate, Piece, Reference and Abbreviated Description Given in Heavy Face Type Only.

Three-Color Style "P-2" Signal Unit Without Backgrounds							
Piece	Ref.	Top Light	Middle Light	Bottom Light	With Socket for	Remarks	Drawing Reference
129322	A	Green	Yellow	Red	5" Pipe or Casing	D.C. or A.C. without individual transformers	C-8900-29
	Aa	Green	Yellow	Red	5" Pipe or Casing	A.C. with individual transformers as shown in dot and dash lines (Orders should specify voltage and frequency)	C-8900
132283	Ab	Green	Yellow	Red	4" Pipe	D.C. or A.C. without individual transformers	C-8900-29
	Ac	Green	Yellow	Red	4" Pipe	A.C. with individual transformers as shown in dot and dash lines (Orders should specify voltage and frequency)	C-8900
132285	Ad	Blank	Green	Red	4" Pipe	D.C. or A.C. without individual transformers	C-8900-29
	Ae	Blank	Green	Red	4" Pipe	A.C. with individual transformers as shown in dot and dash lines (Orders should specify voltage and frequency)	C-8900
132286	Af	Green	Yellow	Blank	4" Pipe	D.C. or A.C. without individual transformers	C-8900-29
	Ag	Green	Yellow	Blank	4" Pipe	A.C. with individual transformers as shown in dot and dash lines (Orders should specify voltage and frequency)	C-8900

UNION SWITCH & SIGNAL CO.

THREE-COLOR STYLE "P-2" SIGNAL UNITS, (WITHOUT BACKLIGHT)
 D. C. OR A. C. WITHOUT INDIVIDUAL TRANSFORMERS

(Continued)

For Style "P-2" Three-Color Signal Units with Backlight Refer to Plate B-2750

Order by Plate, Piece, Reference and Abbreviated Description Given in
 Heavy Face Type Only.

Piece	Ref.	Description	Drawing Reference
132282	2	Case and Cover with Socket for 4" Pipe for Style "P-2" Three-Color Light Signal.....	C-8900-29
129423	2a	Case and Cover with Socket for 5" Pipe or Casing for Style "P-2" Three-Color Light Signal.....	C-8900-29
	3	Lens Unit for Style "P-2" Signal (When ordering refer to Plate B-2785).....	C-8901-35
	4	Tap Bolt $\frac{3}{8}$ "x $1\frac{1}{8}$ " Hex. Hd. with $\frac{3}{8}$ " Plain Lock Washer ($\frac{5}{32}$ "x $\frac{3}{32}$ " Cad. Pl.	
80777	5	Partition.....	C-8901-6
129344	6	Terminal Board with four Terminal Blocks.....	9968-684
	7	Machine Screw No. 14-24x $\frac{3}{8}$ " Fil. Hd. S. (Cad. Pl.) for attaching Ref. 6 to Case.	
129422	8	Case only for Style "P-2" Three-Color Light Signal..	C-8901-56
80778	9	Door with Staple, Packing and Ventilators for Style "P-2" Three-Color Light Signal.....	C-8901-4
49634	10	Pin $\frac{3}{8}$ "x $3\frac{3}{8}$ " for fastening Door to Case.....	B-10207-1
31092	11	Eye Bolt with $\frac{1}{2}$ " Hex. Nut (Cad. Pl.).....	8034-104
72832	12	Hasp.....	8299-66
50126	13	Eye Bolt for Ref. 12.....	8034-64
37075	14	Pin $\frac{3}{8}$ "x $1\frac{7}{8}$ " for attaching Ref. 13 to Case.....	B-10207-1
129250	15	Pipe Socket for 5" Pipe or Casing for Style "P-2" Light Signal.....	C-8901-55
132281	15a	Pipe Socket for 4" Pipe for Style "P-2" Light Signal.	C-8901-67

UNION SWITCH & SIGNAL CO.

THREE-COLOR STYLE "P-2" SIGNAL UNITS, (WITHOUT BACKLIGHT)
D. C. OR A. C. WITHOUT INDIVIDUAL TRANSFORMERS

(Continued)

For Style "P-2" Three-Color Signal Units with Backlight Refer to Plate B-2750

Order by Plate, Piece, Reference and Abbreviated Description Given in
Heavy Face Type Only.

Piece	Ref.	Description	Drawing Reference
	16	Set Screw $\frac{5}{8}$ "-11x1 $\frac{1}{2}$ " Flat Point I. with $\frac{5}{8}$ " Hex. Jam Nut (Cad. Pl.) for 5" Pipe.	
	16a	Set Screw $\frac{5}{8}$ "-11x2" Flat Point I. with $\frac{5}{8}$ " Hex. Jam Nut (Cad. Pl.) for 4" Pipe.	
129448	17	Adjusting Bar	C-8901-43
149008	18	Pivot Screw	8378-351
	19	Tap Bolt $\frac{5}{8}$ "-11x3 $\frac{1}{4}$ " Hex. Hd. with $\frac{5}{8}$ " Hex. Jam Nut (Cad. Pl.).	
	20	Cap Screw $\frac{5}{8}$ "-11x1 $\frac{3}{4}$ " Hex. Hd. with $\frac{5}{8}$ " Plain Lock Washer ($\frac{3}{32}$ "x $\frac{1}{8}$ " Cad. Pl.	
116846	21	Terminal Block with Marker for Ref. 6	9968-625
	22	Machine Screw No. 12-28x $\frac{7}{8}$ " Rd. Hd. S. (Cad. Pl.) with Hex. Nut Ref. 22a and $\frac{1}{4}$ " Plain Lock Washer ($\frac{1}{16}$ "x $\frac{1}{16}$ " Cad. Pl. for attaching Ref. 21 to Ref. 23.	
35216	22a	Hex. Nut for Ref. 22	8265-121
129341	23	Plate only for Ref. 6	9999-297
21918	24	Holder for Ventilator	B-7318-5
21919	25	Screen for Ventilator	B-7318-5
	26	Machine Screw No. 10-30x $\frac{1}{4}$ " Rd. Hd. S. (Cad. Pl.) for attaching Refs. 24 and 25 to Door.	
	27	Flax Packing $\frac{3}{8}$ " Square 6' 1" long for Door (Not Shown).	
95407	28	Disc (Used for blanking out) Not shown	B-7632-41

UNION SWITCH & SIGNAL CO.

**THREE-COLOR STYLE "P-2" SIGNAL UNITS, (WITHOUT BACKLIGHT)
D. C. OR A. C. WITHOUT INDIVIDUAL TRANSFORMERS
(Continued)**

For Style "P-2" Three-Color Signal Units with Backlight Refer to Plate B-2750

Order by Plate, Piece, Reference and Abbreviated Description Given in Heavy Face Type Only.

Piece	Ref.	Description	Drawing Reference
65898	29	Hood (Used for blanking out) Not shown.....	C-8842-15
	30	Machine Screw No. 10-30x $\frac{1}{4}$ " Rd. Hd. S. (Cad. Pl.) for use with Refs. 28 and 29.	
142123	31	Transformer, 55-Volts, 25-Cycles (For details refer to Plate F-6005).....	C-8605-5
131335	31a	Transformer, 110-Volts, 25-Cycles (For details refer to Plate F-6005).....	C-8605-5
129804	31b	Transformer, 110-Volts, 50/100-Cycles (For details refer to Plate F-6003).....	C-8605-5
140877	31c	Transformer, 110-Volts, 50/100-Cycles (For details refer to Plate F-6003).....	C-8605-5