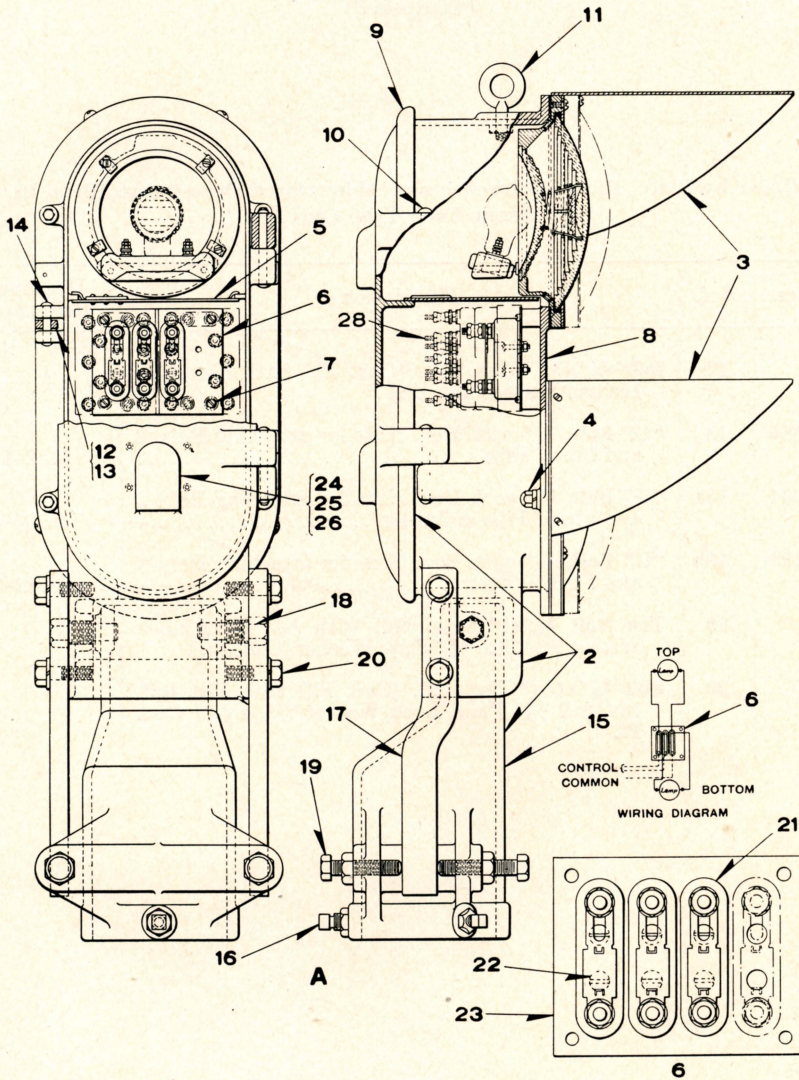


UNION SWITCH & SIGNAL CO.



TWO-COLOR STYLE "P-2" SIGNAL UNIT

UNION SWITCH & SIGNAL CO.

TWO-COLOR STYLE "P-2" SIGNAL UNITS D. C. (OR A. C. WITHOUT INDIVIDUAL TRANSFORMERS)

Backlight can be furnished on Two-Color Signals only when Individual Transformers are not used, but is not included unless mentioned in order.

Unless otherwise specified all Signal Units will be furnished with 10-Volt, 18-Watt double filament Lamps.

Order by Plate, Piece, Reference and Abbreviated Description Given in Heavy Face Type Only.

Two-Color Style "P-2" Signal Unit without Backgrounds						
Piece	Ref.	Top Light	Bottom Light	With Socket for	Remarks	Drawing Reference
142698	A	Green	Red	5" Pipe or Casing	D.C. or A.C. without Individual Transformers	C-8900-61
	Aa	Green	Red	5" Pipe or Casing	A.C. with Individual Transformers as shown in dot and dash lines (Orders should specify voltage and frequency)	C-8900
	Ab	Yellow	Red	5" Pipe or Casing	D.C. or A.C. without Individual Transformers	C-8900-61
	Ac	Yellow	Red	5" Pipe or Casing	A.C. with Individual Transformers as shown in dot and dash lines (Orders should specify voltage and frequency)	C-8900
Piece	Ref.	Description			Drawing Reference	
142697	2	Case and Cover with Socket for 5" Pipe or Casing for Style "P-2" Two-Color Light Signal.....			C-8900-60	
	3	Lens Unit for Style "P-2" Light Signal (When ordering refer to Plate B-2785).....			C-8901-35	
	4	Tap Bolt $\frac{3}{8}$ " x $1\frac{1}{8}$ " Hex. Hd. with $\frac{3}{8}$ " Plain Lock Washer ($\frac{5}{32}$ " x $\frac{3}{32}$ " Cad. Pl.				
80777	5	Partition.....			C-8901-6	
129345	6	Terminal Board with three Terminal Blocks.....			9968-634	

UNION SWITCH & SIGNAL CO.

TWO-COLOR STYLE "P-2" SIGNAL UNITS D. C. (OR A. C. WITHOUT INDIVIDUAL TRANSFORMERS)

(Continued)

Order by Plate, Piece, Reference and Abbreviated Description Given in Heavy Face Type Only.

Piece	Ref.	Description	Drawing Reference
	7	Machine Screw No. 14-24x $\frac{1}{2}$ " Fil. Hd. S. (Cad. Pl.) for attaching Ref. 6 to Case.	
142696	8	Case only for Style "P-2" Two-Color Light Signal...	C-8901-80
89925	9	Door, with Staple, Packing and Ventilators for Style "P-2" Two-Color Light Signal.....	C-8901-11
49634	10	Pin $\frac{3}{8}$ " x $3\frac{3}{8}$ " for fastening Door to Case.....	B-10207-1
31092	11	Eye Bolt with $\frac{1}{2}$ " Hex. Nut (Cad. Pl.).....	8034-104
72832	12	Hasp.....	8299-66
50126	13	Eye Bolt for Ref. 12.....	8034-64
37075	14	Pin $\frac{3}{8}$ " x $1\frac{7}{8}$ " for attaching Ref. 13 to Case.....	B-10207-1
129250	15	Pipe Socket for 5" Pipe or Casing for Style "P-2" Light Signal.....	C-8901-55
	16	Set Screw $\frac{5}{8}$ "-11x $1\frac{1}{2}$ " Flat Point I. with $\frac{5}{8}$ " Hex. Jam Nut (Cad. Pl.) for 5" Pipe.	
129448	17	Adjusting Bar.....	C-8901-43
149008	18	Pivot Screw.....	8378-351
	19	Tap Bolt $\frac{5}{8}$ "-11x $3\frac{1}{4}$ " Hex. Hd. with $\frac{5}{8}$ " Hex. Jam Nut (Cad. Pl.).	
	20	Cap Screw $\frac{5}{8}$ "-11x $1\frac{3}{4}$ " Hex. Hd. with $\frac{5}{8}$ " Plain Lock Washer ($\frac{7}{32}$ " x $\frac{1}{8}$ ") Cad. Pl.	
116846	21	Terminal Block with Marker for Ref. 6.....	9968-625
	22	Machine Screw No. 12-28x $\frac{7}{8}$ " Rd. Hd. S. (Cad. Pl.) with Hex. Nut Ref. 22a and $\frac{1}{4}$ " Plain Lock Washer ($\frac{1}{16}$ " x $\frac{1}{16}$ ") Cad. Pl. for attaching Ref. 21 to Ref. 23.	

UNION SWITCH & SIGNAL CO.

TWO-COLOR STYLE "P-2" SIGNAL UNITS D. C. (OR A. C. WITHOUT
INDIVIDUAL TRANSFORMERS)

(Continued)

Order by Plate, Piece, Reference and Abbreviated Description Given in
Heavy Face Type Only.

Piece	Ref.	Description	Drawing Reference
35216	22a	Hex. Nut for Ref. 22.....	8265-121
129341	23	Plate only for Ref. 6.....	9999-297
21918	24	Holder for Ventilator.....	B-7318-5
21919	25	Screen for Ventilator.....	B-7318-5
	26	Machine Screw No. 10-30x1/4" Rd. Hd. S. (Cad. Pl.) for attaching Refs. 24 and 25 to Door.	
	27	Flax Packing 3/8" Square, 4' 1 1/2" long for Door (Not shown).	
131335	28	Transformer, 110-Volts, 25-Cycles (For details refer to Plate F-6005).....	C-8605-5
129804	28a	Transformer, 110-Volts, 50/100-Cycles (For details refer to Plate F-6003).....	C-8605-5
140877	28b	Transformer, 110-Volts, 50/100 Cycles (For details refer to Plate F-6003).....	C-8605-5
130936	28c	Transformer, 110-Volts, 60-Cycles (For details refer to Plate F-6003).....	C-8605-14
133253	28d	Transformer, 110-Volts, 60/100-Cycles (For details refer to Plate F-6003).....	C-8605-14